

Product Specifications

LGX Fiber Optic LC Adapter Plates

KEY FEATURES

- Meets ANSI/TIA-568-C.3 transmission performance specifications
- FOCIS compliant adapters are color-coded per ANSI/TIA-568-C.3
- Toolless installation and removal of adapter plates
- Compatible with Signamax LGX footprint wall & rack-mount optical fiber enclosures & panels
- Unpopulated versions for customized configurations

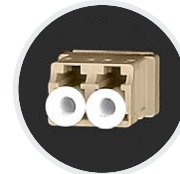


LC Adapter Plates

ORDERING INFORMATION

PART NO.	DESCRIPTION
OM3/OM4 ADAPTER PLATES	
UFE-B-06LC-G	12 Fiber (6 Duplex LC) LC OM3/OM4 Adapter Plate, Aqua Adapters, Ceramic Sleeve
UFE-B-08LC-G	16 Fiber (8 Duplex LC) LC OM3/OM4 Adapter Plate, Aqua Adapters, Ceramic Sleeve
UFE-B-12LC-G	24 Fiber (6 Quad LC) LC OM3/OM4 Adapter Plate, Aqua Adapters, Ceramic Sleeve
OM1/OM2 ADAPTER PLATES	
UFE-B-06LC	12 Fiber (6-Duplex LC) LC MM Adapter Plate, Beige Adapters, Phosphor Bronze Sleeve
UFE-B-08LC	16 Fiber (8-Duplex LC) LC MM Adapter Plate, Beige Adapters, Phosphor Bronze Sleeve
UFE-B-12LC	24 Fiber (6 Quad LC) LC MM Adapter Plate, Beige Adapters, Phosphor Bronze Sleeve
SM ADAPTER PLATES	
UFE-B-06LC-C	12-Fiber (6-Duplex LC) LC SM Adapter Plate, Blue Adapters, Ceramic Sleeve
UFE-B-08LC-C	16-Fiber (8-Duplex LC) LC SM Adapter Plate, Blue Adapters, Ceramic Sleeve
UFE-B-12LC-C	24-Fiber (6-Quad LC) LC SM Adapter Plate, Blue Adapters, Ceramic Sleeve

For SM APC Adapters (green) add an **A** after the LC in the part number.



Product Specifications

LGX Fiber Optic LC Adapter Plates

ORDERING INFORMATION (cont.)

PART NO.	DESCRIPTION
EMPTY ADAPTER PLATES	
UFE-B-06SC-B	6 SC Simplex/6 Duplex LC Adapter Plate, No Adapters
UFE-B-08SC-B	8 SC Simplex/8 Duplex LC Adapter Plate, No Adapters
UFE-B-Q6SC-B	6 SC Duplex/6 Quad LC Adapter Plate, No Adapters
BLANK ADAPTER PLATES	
UFE-B-BL	Blank LGX Filler Adapter Plate, No Adapters, No Cutouts
ADAPTER BLANKS	
OFAB-01-24	Duplex LC or Simplex SC adapter blank (Pack of 24)
OFAB-02-24	Duplex SC adapter blank (Pack of 24)



SPECIFICATIONS

TRANSMISSION PERFORMANCE

ANSI/TIA-568-C.3: exceeds component specifications

TRANSMISSION MEDIA

Multimode: OM1, OM3, OM4, OM5

Singlemode: OS1, OS2

ADAPTER FOOTPRINT

LC duplex and quadruplex

CONSTRUCTION

Plate: Steel with corrosive resistant black finish

Plunger Locks: High-impact thermoplastic, UL94V-0 fire-retardant

Adapter Housing: High-impact thermoplastic, UL94V-0 fire-retardant

Sleeve: Multimode - Phosphor bronze alloy; Singlemode - Zirconia ceramic

MECHANICAL

Durability: < 0.1 dB typical change

Sleeve/Ferrule Withdraw Force: 1.96 N (200 gf) (0.44 lbf) – 5.88 N (600 gf) (1.32 lbf)

Mating Cycle Life: Min 500 cycles

Insertion Loss

Metal Sleeve: 0.10 dB typical, 0.30 dB maximum

Zirconia Sleeve: 0.05 dB typical, 0.20 dB maximum

DIMENSIONS

5.14" W x 1.21" H (131 mm x 31 mm)

ENVIRONMENTAL CONDITIONS

Operating Temperature: -40 °F to 167 °F (-40 °C to 75 °C)

Operating RH: 93% Max (non-condensing)

COMPLIANCE

TIA FOCIS, ANSI/TIA-568-C.3, GR-326

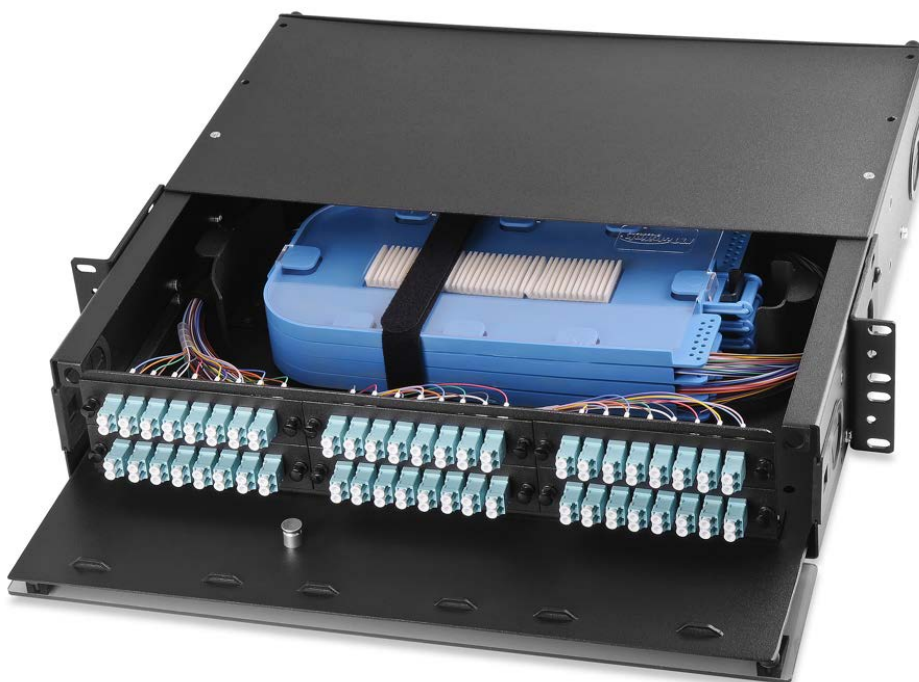
APPLICATIONS

Ethernet 10, 100, 1000, 10G, 100GBASE, ANSI X3.166, ANSI X3.184, Fibre Channel, ITU-T G.984, ITU-T G.987, IEEE 802.3av, TR 4/16/100, 100VG-Any LAN, ATM, ISO/IEC 8802-3: FOIRL

WARRANTY

5 - Year Limited Component

INSTALLED VIEW



KEEPING YOUR WORLD CONNECTED