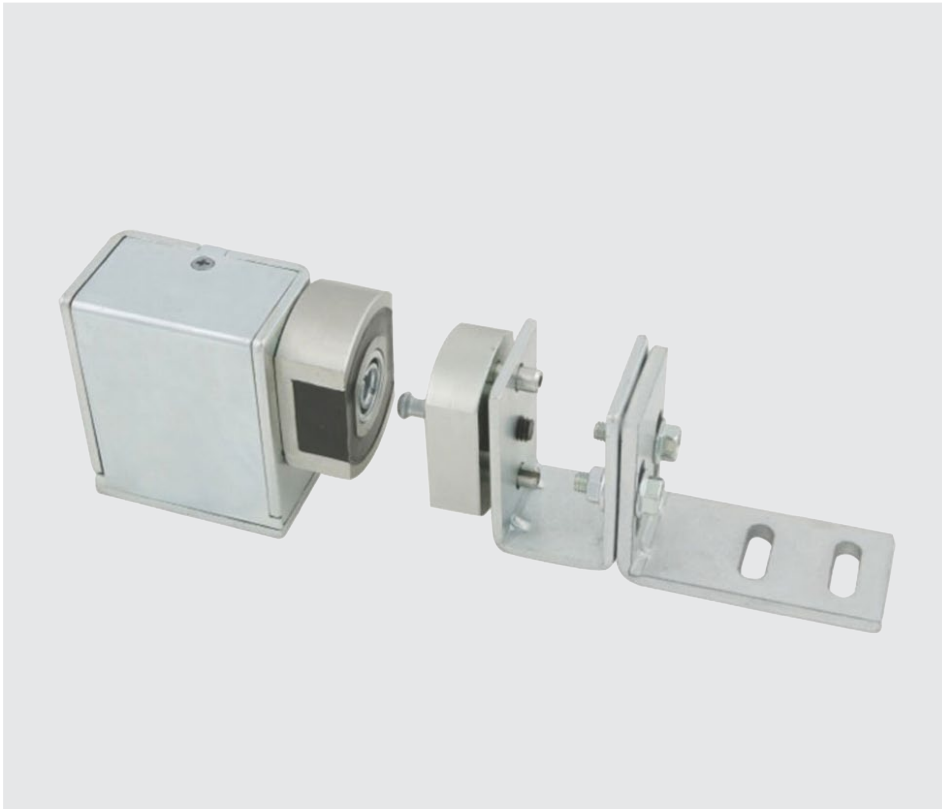


RCI MEM4400

Compact electromechanical lock



Features

- Energy: 260mA 12/24VDC
- Strength: 880lbf Holding Force
- Mode: Fail-Safe
- Monitor: Lock & Door Status Sensors
- Ultra-compact design
- Low power consumption
- Easy installation
- Early warning alarm
- No residual magnetism
- 3 Year Limited Warranty

The MEM4400 compact electromechanical lock is an ultra-compact solution for sliding doors or small enclosures. The lock is easily installed on or within the door track of automatic sliding doors. The RCI MEM4400 has lock and door status sensors with an early warning alarm.



Energy
260mA
12/24VDC



Strength
880lbf Holding force



Monitor
lock & door
status sensor



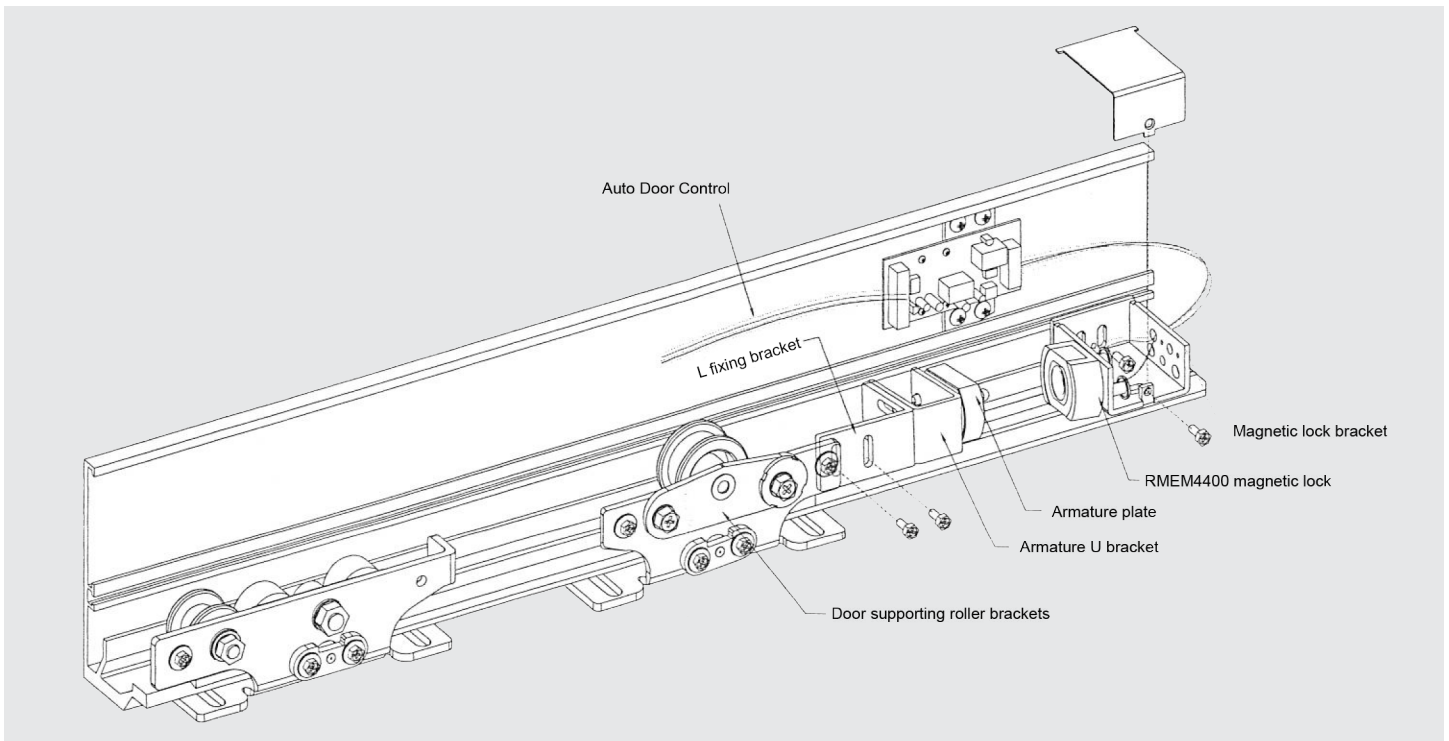
Warranty
3 Year limited warranty



Mode
fail-safe

Specifications

Energy	Voltage – 12VDC/24VDC Current - 260mA Duty - continuous
Dimensions	1-3/4"W x 1-3/16"H x 21/32"D (44mm x 30mm x 16.5mm)
Dimension (Armature plate)	1-3/4"W x 1-3/16"H x 1/2"D (44mm x 30mm x 12.5mm)
Strength	880lbf
Monitor	Lock & door status sensors
Mode	Fail safe



© dormakaba 2022 Information on this sheet is intended for general use only. dormakaba reserves the right to alter designs and specifications without notice or obligation.

Any questions? We would be happy to advise you.
Contact us at: 1-800-265-6630