

# TURING SOLARSHIELD ONE

All-In-One Outdoor Solar Video Surveillance

LS-KG2-ONE-3Y

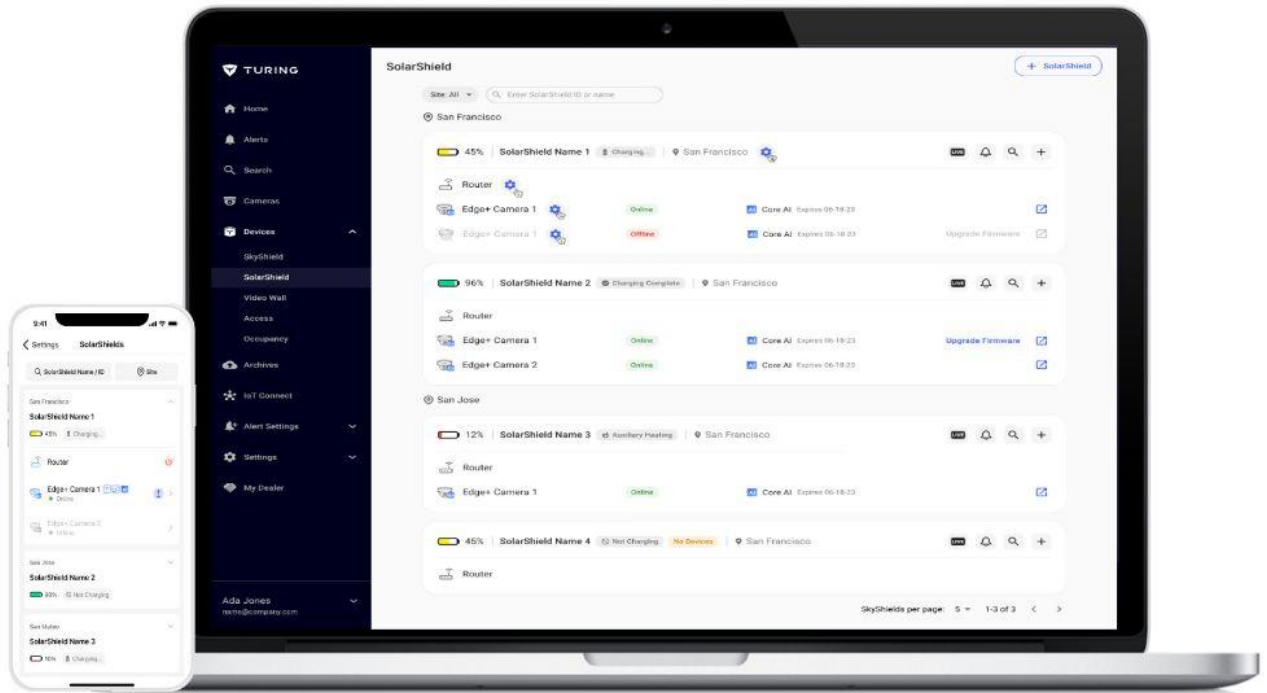
## KEY FEATURES

- ✓ Easy and rapid deployment
- ✓ NEMA enclosure System
- ✓ Smart Security, powered by Turing Vision Cloud
- ✓ Fully Equipped for all your security needs with Varifocal Zoom Cloud Cameras
- ✓ Built-in 4G/LTE router with remote network management
- ✓ Remote management (Battery Status, Battery Reboot.etc)



**SIM Carriers Supported**





## KEY FEATURES

- ✔ Remote Power management including battery reboot and router reboot
- ✔ Remote status monitoring including charging status, battery status and router status
- ✔ Support Time Lapse video creation on the cloud
- ✔ Receive Instant Smart Alerts for Intruders/Trespassers/Person of Interest/Vehicle of Interest via SMS/Email/Push Notifications
- ✔ Remote Live Stream Monitoring
- ✔ Share Live Camera Streams With First Responders
- ✔ Find Events Fast with Smart Video Search and Archive/Share for Future Reference
- ✔ View Live Footage From any Desktop / Mobile Device
- ✔ Flexible Hybrid Storage Locally or on the Cloud

GENERAL	
<b>Dimensions (LxWxH)</b>	Integrated Bracket: 605 × 485 x 265mm Solar Module: TL-S90W: 1000*516*35mm
<b>Weight</b>	Integrated Bracket: 46lbs (without camera) Support: 28lbs Solar Panel: 28lbs
<b>Working Environment</b>	Outdoor: -30°C~+ 60°C (-22°F~+140°F)
<b>Rating</b>	NEMA3R

POWER	
<b>Standard Output Power</b>	TL-S90W: 90W/18V Power/Voltage: 90W/18V
<b>Power Interface</b>	Integrated Bracket & Smart Controller, Solar Module and Smart Battery

BATTERY	
<b>Battery Type</b>	Lithium
<b>Capacity</b>	300 Wh
<b>Working Voltage</b>	9~12.6V
<b>Working Current</b>	10A Max
<b>Operating Temperatures</b>	-30°C to 60°C (-22 F to 140°F)

Heat	
<b>Heat</b>	Smart battery module, supports intelligent auxiliary heating, adapts to extreme cold weather

CAMERA (EVC5ZB)	
<b>Sensor</b>	1/2.8" 5MP 16:9 Progressive Scan CMOS
<b>Lens</b>	2.7-13.5mm zoom lens; F1.6~F3.1
<b>Field of View</b>	H: 106~32°; V: 55~18°; D: 129~37°
<b>Manual Angle Adjustment</b>	Tilt: 0°~90°; Rotate: 0°~180°
<b>Electronic Shutter</b>	1/32000 - 1/5 sec
<b>Minimum Illumination</b>	0.005 LUX @ F1.6
<b>Day / Night</b>	MIRC Filter
<b>IR Range</b>	IR LED: Up to 98 ft (30m)
<b>IR Wavelength</b>	850nm
<b>Wide Dynamic Range</b>	120 dB wide dynamic range (WDR); 2D & 3D digital noise reduction

NETWORK(Cellular)	
<b>Standard and Band</b>	LTE FDD: B1/B3/B5/B7/B8/B20/B28 B1/B2/B3/B4/B5/B7/B8/B28 (Optional), B2/B4/B5/B12/B13/B17/B66/B71 (Optional) LTE TDD: B38/B39/B40/B41 HSPA+/HSUPA/HSDPA/WCDMA/UMTS 2100/1900/900/850MHz EV-DO: BC0 CDMA 1x: BC0 EDGE/GPRS/GSM 850/900/1800/1900MHz
<b>Antenna Interface</b>	Cellular: 2 * Standard SMA female antenna interface, characteristic impedance: 50 Ω
<b>SIM/UIM Slot</b>	Standard drawer-type user card interface

LOCAL VIDEO STORAGE	
<b>Onboard Storage</b>	256GB, up to 30 days* <small>*Actual retention period may vary based on scene complexity and activity</small>

VIDEO & AUDIO	
<b>Video Compression</b>	H.265/H.264 w/ smart encoding; MJPEG;
<b>Resolution &amp; Frame Rate</b>	Main Stream: 2880*1620 up to 30 FPS Sub Stream: 1280*720 up to 30 FPS
<b>Image Flip &amp; Rotation</b>	Normal / Vertical / Horizontal / 180° / 90° Clockwise / 90° Counterclockwise
<b>White Balance</b>	Auto/Outdoor/Fine Tune/Sodium Lamp/ Locked/Auto2
<b>Audio</b>	Microphone, Line In/Line Out; G.711/G.726

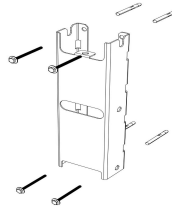
## MOUNT OPTIONS Pole Mount

3.9 into 11.8 in dia Stainless Steel Adjustable Clamp x4 (Included)



## MOUNT OPTIONS Wall Mount

M8 x 80  
(Not included in Product)



## Typical Application

Turing products are classified into three levels according to their anti-corrosion performance. Refer to the following description to choose for your using environment.

This model has NO SPECIFIC PROTECTION

Level	Description
<b>Top-level protection</b>	Turing products at this level are equipped for use in areas where professional anti-corrosion protection is a must. Typical application scenarios include coastlines, docks, chemical plants, and more
<b>Moderate protection</b>	Turing products at this level are equipped for use in areas with moderate anti-corrosion demands. Typical application scenarios include coastal areas about 1 mile away from coastlines, as well as areas affected by acid rain.
<b>No specific protection</b>	Turing products at this level are equipped for use in areas where no specific anti-corrosion protection is needed