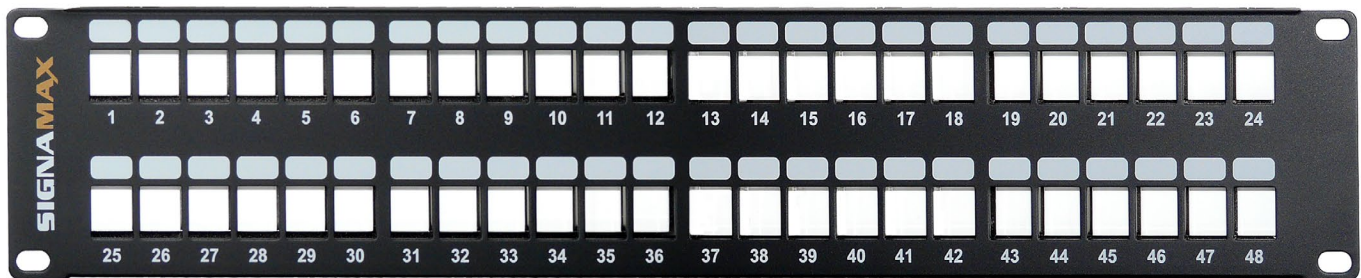
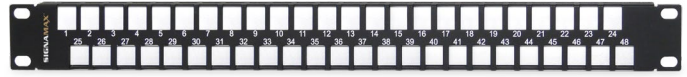


Field-Configurable Optical Fiber Patch Panels

KEY FEATURES

- Meets ANSI/TIA-568-C.3 component performance specifications
- Meets EIA/ECA-310-E mounting standards for 19 inches
- Compatible with Signamax optical fiber keystone multimedia modules
- Equipped with removable rear cable management bar
- Increased termination per RMU due to compact adapter population
- Panels come as a kit with panel & black modules per port count



LC Optical Fiber Patch Panels

ORDERING INFORMATION

PART NO.	DESCRIPTION
OM3/OM4 PANEL	
24HDLCG-FT	24-Port OM3/OM4 LC Optical Fiber Panel, 1 RMU
48HDLCG-FT	48-Port OM3/OM4 LC Optical Fiber Panel, 2 RMU
48HD1LCG-FT	48-Port OM3/OM4 LC Optical Fiber Panel, 1 RMU
OS2 PANEL	
24HDLCS-FT	24-Port LC/OS2 Optical Fiber Panel, 1 RMU
48HDLCS-FT	48-Port LC/OS2 Optical Fiber Panel, 2 RMU
48HD1LCS-FT	48-Port LC/OS2 Optical Fiber Panel, 1 RMU
24HDLCA-FT	24-Port LC/OS2 APC Optical Fiber Panel, 1 RMU
48HDLCA-FT	48-Port LC/OS2 APC Optical Fiber Panel, 2 RMU
48HD1LCA-FT	48-Port LC/OS2 APC Optical Fiber Panel, 1 RMU

SC Optical Fiber Patch Panels

ORDERING INFORMATION

PART NO.	DESCRIPTION
OM3/OM4 MM PANEL	
24HDSCG-FT	24-Port OM3/OM4 SC Optical Fiber Panel, 1 RMU
48HDSCG-FT	48-Port OM3/OM4 SC Optical Fiber Panel, 2 RMU
48HD1SCG-FT	48-Port OM3/OM4 SC Optical Fiber Panel, 1 RMU
OS2 PANEL	
24HDSCS-FT	24-Port SC/OS2 Optical Fiber Panel, 1 RMU
48HDSCS-FT	48-Port SC/OS2 Optical Fiber Panel, 2 RMU
48HD1SCS-FT	48-Port SC/OS2 Optical Fiber Panel, 1 RMU
24HDSCA-FT	24-Port SC/OS2 APC Optical Fiber Panel, 1 RMU
48HDSCA-FT	48-Port SC/OS2 APC Optical Fiber Panel, 2 RMU
48HD1SCA-FT	48-Port SC/OS2 APC Optical Fiber Panel, 1 RMU

Additional module colors and legacy connectors (OM1) available by request, contact customer service.

*Need more customization, contact tech support for a consult.

Product Specifications

Field-Configurable Optical Fiber Patch Panels



SPECIFICATIONS

TRANSMISSION PERFORMANCE

ANSI/TIA-568-C.3: exceeds component specifications

TRANSMISSION MEDIA

Multimode: OM1, OM3, OM4

Singlemode: UPC, APC

Insertion Loss: 0.10 dB Typical, 0.30 dB Max

DIMENSIONS

Panel: 19-in rack mountable

Management Bar: Installed 6.0" (153 mm) / Uninstalled 1.5" (38 mm)

Jack Mounting Opening: 0.57" W x 0.76" H (14.7 mm x 19.3 mm)

CONSTRUCTION

Panel: Front: Steel with corrosive resistant black finish/ Rear: Nickel-plated steel

Cable management bar: High-impact thermoplastic

Housing: High impact thermoplastic, UL94V-0 fire retardant

Sleeve: Zirconia ceramic

INSERTION LOSS

Metal sleeve: 0.10 dB Typical, 0.30 dB Max

Zirconia sleeve: 0.05 dB typical, 0.20 dB Max

MECHANICAL

Sleeve/Ferrule Withdraw Force:

1.96 N (200 gf) (0.44 lbf) – 5.88 N (600 gf) (1.32 lbf)

Mating cycle life: Min 500 cycles

ENVIRONMENTAL CONDITIONS

Operating & Storage Temperature: -40 to 185°F (-40 to 85°C)

Operating RH: 93% (non-condensing)

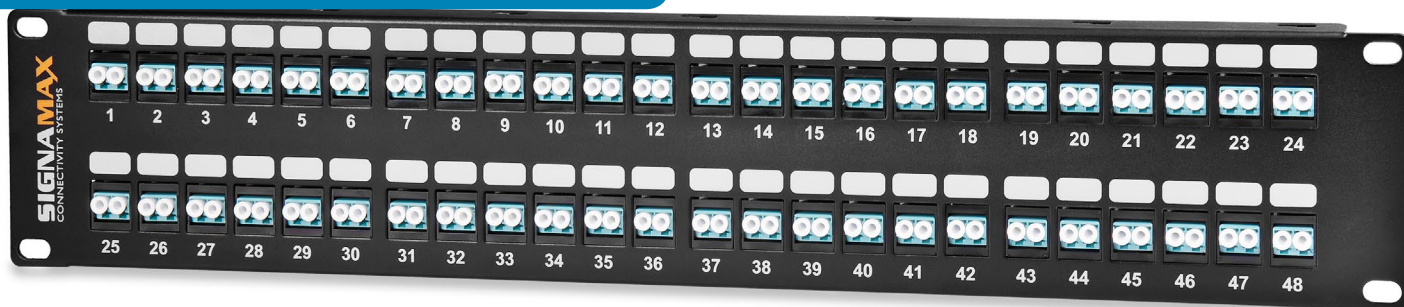
COMPLIANCE

ANSI/TIA-568-C.3, ISO/IEC 11801 2nd Ed., FOCIS, CENELEC EN 50173, UL94V-0

WARRANTY

5 - Year Limited Component

LC LOADED PANEL (48HDLCG-FT)



CABLE MANAGEMENT VIEW DETAIL

