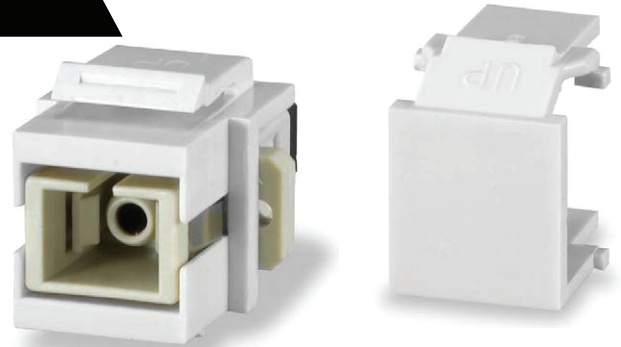


Fiber Optic Keystone Modules

KEY FEATURES

- Meets ANSI/TIA-568-C.3 transmission performance specifications
- Universal keystone design with configurable patch panels for the enterprise or data center
- Precise measurements for ferrule alignment to reduce insertion loss
- Multi-purpose flexibility - fitting with the SIGNAMAX Just Right Density™ product offering collection



SC CONNECTIONS

PART NUMBER	DESCRIPTION
CMK-SCG	SC OM3/OM4 Keystone Connector Module, Light Ivory
CMK-SCS	SC SM Keystone Connector Module, Light Ivory

LC CONNECTIONS

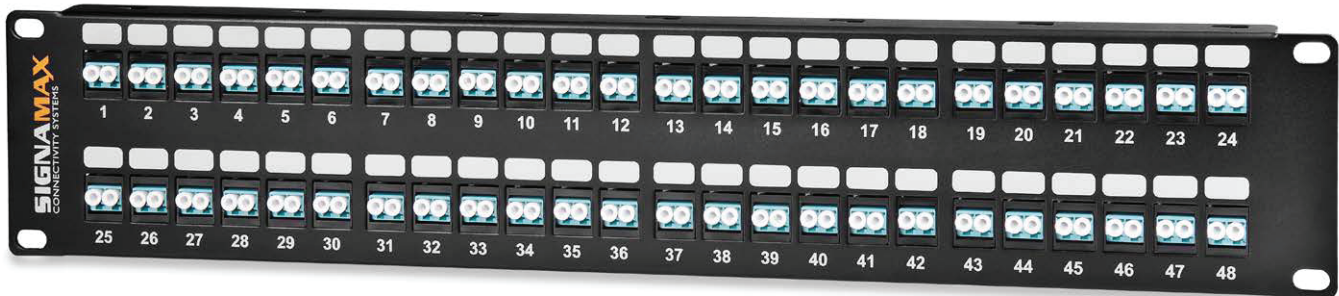
PART NUMBER	DESCRIPTION
CMK-LCG	LC OM3/OM4 Keystone Connector Module, Light Ivory
CMK-LCS	LC SM Keystone Connector Module, Light Ivory

BLANK

PART NUMBER	DESCRIPTION
CMK-BL	Blank Keystone Module (package of ten), Light Ivory

For other colors add the following to P/N: WH DI GY BK

For SM APC Adapters (green) add an A after the LC or SC in the part number. Additional module colors and legacy connectors (OM1) available by request, contact customer service.



*Need more customization, contact tech support for a consult.

SPECIFICATIONS

TRANSMISSION PERFORMANCE

ANSI/TIA-568-C.3: exceeds component specifications

TRANSMISSION MEDIA

Multimode: OM1, OM3, OM4
Singlemode: UPC, APC
Insertion Loss: 0.20 dB Typical, 0.40 dB Max
Insertion loss increase after 500 mating cycles: 0.10 dB

DIMENSIONS

SC: 1.10" D x 0.67" W x 0.76" H (28 mm x 16.9 mm x 19.3 mm)
LC: 1.00" D x 0.67" W x 0.76" H (28 mm x 16.9 mm x 19.3 mm)

CONSTRUCTION

Housing: High impact thermoplastic, UL94V-0 fire retardant
Sleeve: Zirconia ceramic

MECHANICAL

Sleeve/Ferrule Withdraw Force:
 1.96 N (200 gf) (0.44 lbf) – 5.88 N (600 gf) (1.32 lbf)
Mating cycle life: Min 500 cycles

ENVIRONMENTAL CONDITIONS

Operating & Storage Temperature: -40 to 185°F (-40 to 85°C)
Operating RH: 93% (non-condensing)

COMPLIANCE

ANSI/TIA-568-C.3, FOCIS, UL94V-0

WARRANTY

5 - Year Limited Component