

Instructions for 0E-RLY6242A

Product specifications

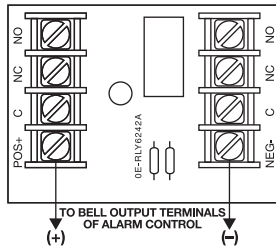
6, 12 or 24VDC operation (*factory set for 6VDC. Cut jumper 1—"J1"—for 24VDC. Cut jumper 2—"J2"—for 12VDC.*)

30mA current draw

1A/120VAC or 2A/28VDC DPDT contacts

Dimensions: 2.75"L X 2"W X 1"H (70mm X 51mm X 25mm)

Wiring for DRY CONTACTS:



Notice:

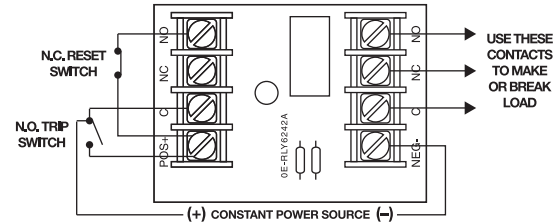
UltraTech does not provide technical support for relay modules. Applications are numerous and diverse, and installation should be performed only by trained and experienced technicians.

RELAY

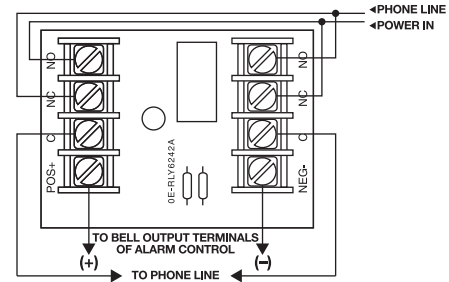
6, 12 OR 24VDC
1 OR 2A, DPDT



Wiring for LATCHING DRY CONTACTS:



Wiring for POLARITY REVERSAL:



Wiring for LINE SEIZURE:

