

Instructions for 0E-FRLY24V10 and 0E-FRLY12V7 Multi-Voltage Relays

Applications:

UltraTech 0E-FRLY24V10 and 0E-FRLY12V7 are encapsulated multi-voltage relays suited to applications requiring remote relays for control or status feedback. Long flying leads are incorporated and are installer selected based on the input control voltage to be applied.

0E-FRLY24V10 provides SPDT 10 amp Form C contacts that may operate via one of three input control voltages by wiring to corresponding flying leads: 24VDC, 24VAC or 120VAC. The DC input voltage is polarity sensitive and diode protected.

0E-FRLY12V7 provides SPDT 7 amp Form C contacts that may operate via either of two input control voltages by wiring to corresponding flying leads: 12VDC or 24VDC. The DC input voltage is polarity sensitive and diode protected.

Applications include Fire Alarm Control, security systems, HVAC, temperature control, lighting systems and energy management.

A red LED indicates the relay is energized.

Mounting and wiring aids are provided.

UltraTech 0E-FRLY24V10 and 0E-FRLY12V7 are UL864 listed (Control Unit Accessory).

Product specifications:

	0E-FRLY24V10	0E-FRLY12V7
• Voltage input:	24VDC, 24VAC, 120 VAC	12VDC, 24VDC
• Current draw:		
@12VDC	NA	28mA
@24VDC	15mA	24mA
@24VAC	50mA	NA
@120VAC, 60Hz	38mA	NA
• Polarized coil input:	DC control input only	DC control input only
• Contacts:	Dry Form C SPDT	Dry Form C SPDT
• Contact ratings:		
@5VDC	250µA/ 0.35 P.F.	250µA/ 0.35 P.F.
@24VDC	7A/ 0.35 P.F.	7A/ 0.35 P.F.
@120VAC	10A	7A/ 0.35 P.F.
• Indicator:	Red LED indicates relay coil is energized	
• Wire type:	Six (6) 12" 18 AWG flying leads	
• Housing:	ABS plastic	
• Potting:	Epoxy resin	
• Operating temperature:	32°F to 120°F (0°C to 49°C)	
• Relative humidity:	93%, non-condensing	
• Case dimensions:	1.5"L x 1.2"W x 0.8"H (38L x 31W x 20H mm)	1.5"L x 1.0"W x 0.7"H (38L x 25W x 18H mm)
• Approvals:	UL864 listed (Control Unit Accessory), CSFM, MEA	

Install in accordance with the applicable National Fire Protection Association Installation Standard for each type of control unit, such as, in this case NFPA 70, 72.

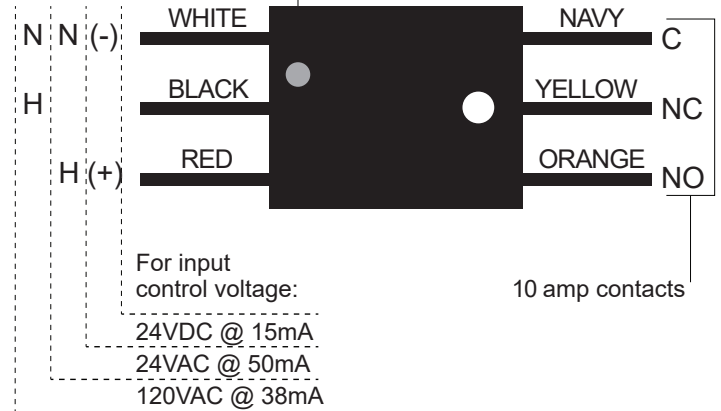
Wiring:

WARNING: DISCONNECT POWER BEFORE OPENING. AVERTISSEMENT: COUPER LE COURANT AVANT D'OUVRIER

0E-FRLY24V10

NOTE: DC coil input is polarized

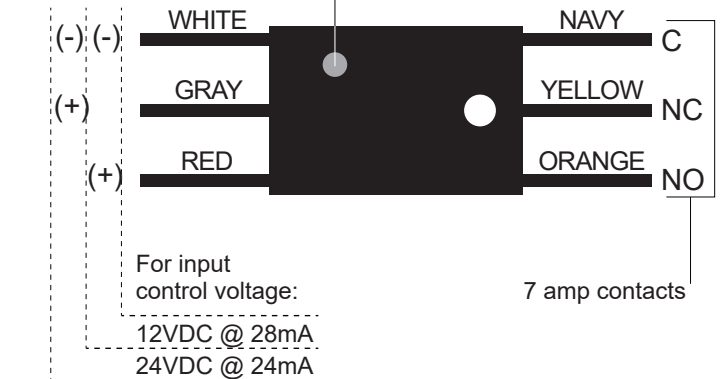
Lighted LED indicates relay coil is energized



0E-FRLY12V7

NOTE: DC coil input is polarized

Lighted LED indicates relay coil is energized



UltraTech
POWER PRODUCTS

SIGNALING
UL LISTED
UL 864 LISTED
FIRE ALARM CONTROL EQUIPMENT
CFSM LISTED
MEA ACCEPTED