



## HUBBELL NextSpeed<sup>®</sup> Ascent 10GbE Patch Cords

10GbE Application Assurance.  
Maximum Bandwidth Beyond  
625MHz.  
Component Compliant ANEXT  
Performance.  
PoE and PoE+ Ready.

Plug design controls  
port-to-port ANEXT.

Custom cable eliminates  
cable-to-cable ANEXT.



Optimized pair separation  
maximizes NEXT.

### FEATURES

- Category 6a ANEXT component compliant.
- Backward compatible to Category 6, 5e, 5 and 3.
- Customized high performance patch cable.

### SPECIFICATIONS

#### Plug Construction

#### Mechanical

- ◆ Cable to plug tensile strength: 20+ lbs.
- ◆ Mating cycles: 2000+.

#### Material

- ◆ Plug body: Polycarbonate UL 94V-0.
- ◆ Plug boot: PVC.
- ◆ Contact: High strength copper alloy.
- ◆ Plating: 50 micro-inch Gold with 100 micro-inch under plating.

**NEXTSPEED<sup>®</sup>** Ascent 10GbE is a tuned system of structured cabling components designed and center balanced to work together. **NEXTSPEED<sup>®</sup>** Ascent 10GbE delivers headroom beyond 625MHz.

The PC6A patch cords are constructed with specially designed patch cable and an assembly procedure delivering the industry's highest performing patch cord. Incorporated into the design, is a conductor sled optimizing performance, controlling NEXT and separating pairs providing a consistent contact-to-conductor alignment during termination.

Every **NEXTSPEED<sup>®</sup>** Ascent 10GbE patch cord is 100% performance tested out to 625MHz, delivering the highest quality, most reliable patch cord in the industry.

### STANDARDS/LISTINGS/VERIFICATIONS

- ANSI/TIA-568-B.2-10\*.
- IEEE 802.3af (PoE) and IEEE 802.3at (PoE+).
- Exceeds IEEE 802.3an 10GBASE-T link segment requirements.
- IEEE 802.3an 10-Gigabit Ethernet verified.
- 3rd party verified.
- UL Listed 1863.
- FCC part 68.5, subpart F compliant.
- ISO/IEC 60603-7.
- ISO 11801 (Second edition) Class E compliant.

\* Proposed draft.

### APPLICATIONS SUPPORTED

- ▲ Data centers 10GbE between devices:
  - Server to switch.
  - Server to server.
  - Server to storage.
- ▲ High-performance cable applications.
  - Active zone cabling.
  - Distributed cabling.
- ▲ PoE Applications
  - WAP's.
  - Security Appliances.
  - VoIP.
- ▲ Bandwidth intensive processing:
  - Video on demand (VOD).
  - Real-time security surveillance.
  - High-resolution 3D modeling.
  - On-line document publishing.
  - Broadband video.



**ORDERING INFORMATION**

**NEXTSPEED® Ascent 10GbE Patch Cords**



The NEXTSPEED® The Ascent 10GbE patch cords are constructed with specially designed patch cable and an assembly procedure delivering the industry's highest performing patch cord. Incorporated into the design, is a conductor sled optimizing performance, controlling NEXT and separating pairs providing a consistent contact-to-conductor alignment during termination.

Color: Gray. Catalog No. **PC6AGYXX**  
**XX** = Length: '03' = 3', '05' = 5', '07' = 7', '10' = 10', '15' = 15', '20' = 20'.

**ACCESSORIES**

**NEXTSPEED® Ascent 10GbE Jacks**

Unit Package:	1 per Bag.	Order Qty.:	Carton of 25
Color	Wiring	Catalog No.	
Black	Universal	<b>HXJ6ABK</b>	
Blue	Universal	<b>HXJ6AB</b>	
Gray	Universal	<b>HXJ6AGY</b>	
Office White	Universal	<b>HXJ6AOW</b>	
Orange	Universal	<b>HXJ6AOR</b>	
White	Universal	<b>HXJ6AW</b>	

**NEXTSPEED® Ascent 10GbE Patch Panels**



NEXTSPEED® Ascent 10GbE patch panels are available in silver and black, 24-, 48-, and 96-ports and are supplied with labeling for T568B wiring. Panels can be converted to T568A with a simple flip of the universal wiring label.

**Delivery:** 1 patch panel, 1 universal wiring insert, clear plastic label holders and mounting hardware.

Ports	Height	Width	Color	Catalog No.
24	1.75" (45)	19" (483)	Black	<b>P6A24U</b>
48	3.50" (89)	19" (483)	Black	<b>P6A48U</b>
96	7.00" (178)	19" (483)	Black	<b>P6A96U</b>
24	1.75" (45)	19" (483)	Silver	<b>P6A24US</b>
48	3.50" (89)	19" (483)	Silver	<b>P6A48US</b>
96	7.00" (178)	19" (483)	Silver	<b>P6A96US</b>

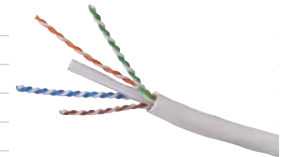
**ANEXT Suppression**

ANEXT Alien Crosstalk - Coupled signal on a cable/port arising from signal or signals from different neighboring cables/ports. Patch Cords were designed to isolate port to port ANEXT when terminated side-by-side in either panels or Jacks.



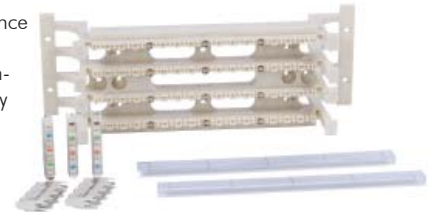
**NEXTSPEED® Ascent 10GbE, 4-Pair, UTP Cable**

Color	Catalog No. Riser Spool	Catalog No. Plenum Spool
Blue	<b>C6ASRB</b>	<b>C6ASPB</b>
Gray	<b>C6ASRGY</b>	<b>C6ASPGY</b>
White	<b>C6ASRW</b>	<b>C6ASPW</b>
Yellow	<b>C6ASRY</b>	<b>C6ASPY</b>



**6-110 Block Kit**

The perfect high-performance consolidation point, the 6-110 system delivers component compliant Category 6a performance.



Description*	Catalog No.
64-Pair Kit with legs and 16 connecting blocks*	<b>6110FTK64WL</b>
64-Pair Kit w/o legs and 16 connecting blocks*	<b>6110FTK64NL</b>
192-Pair Kit with legs and 64 connecting blocks*	<b>6110FTK192WL</b>

\* 6-110, 4-pair connecting blocks

**Hubbell Cable Labels**

Color	Size W x H	Application	Catalog No.
White	1.0" x 1.33"	4-pair UTP	<b>XPLCBLA2</b>

**VELCRO® Brand One-Wrap® Cable Ties**

Length	Color	Puck	Diameter	Catalog No.
5"	See below	10	1.4"	<b>HPWCVFXX5</b>
8"	See below	10	2.5"	<b>HPWCVFXX8</b>

XX = Color: "BK" = Black; "B" = Blue; "OR" = Orange; "R" = Red.

VELCRO® and ONE-WRAP® are registered trademarks of Velcro Industries B.V.



**Hubbell Premise Wiring**

HUBBELL INCORPORATED (Delaware)  
 14 Lord's Hill Road • Stonington, CT 06378-0901 • (860) 535-8326 • 800-626-0005  
 Fax: (860) 535-8328 • Internet site: <http://www.hubbell-premise.com>

**Worldwide Locations**

Hubbell Premise Wiring, Asia Pacific	852-2836-7131	Fax: 852-2836-7132
Hubbell Canada Inc.	905-839-1138	Fax: 905-839-9108
Hubbell Premise Wiring, Central America	506-309-4158	Fax: 506-260-1616
Hubbell Premise Wiring, China	8621-6309-0119	Fax: 8621-6309-0122
Hubbell Premise Wiring, Colombia	571-245-8940	Fax: 571-340-0925
Hubbell Premise Wiring, Europe	44-01283 500500	Fax: 44-01283 500400
Hubbell Int'l. Inc., Korea Branch	82-2-(0)2607-1363	Fax: 82-2-(0)2603-7386

Hubbell Premise Wiring, Latin America	305-408-4501	Fax: 305-408-8201
Hubbell de Mexico, S.A. de C.V.	(5255) 9151-9999	Fax: (5255) 9151-9989
Hubbell Premise Wiring, Middle East	971-4-393-4192	Fax: 971-4-393-4194
Hubbell-Taian Co., Ltd., Taiwan	886-2-2522-1862	Fax: 886-2-2522-1872
Hubbell Premise Wiring, Turkey	90-216-313-5016	Fax: 90-216-414-8148
Hubbell Premise Wiring, Venezuela	58-416-680-7453	Fax: 58-281-274-7900