

A photograph of a server room. In the foreground, several server racks are visible, each filled with server units. Above the racks, a complex network of blue cables is organized and bundled. The room is dimly lit, with some light coming from the racks and overhead fixtures. A white curved line is drawn across the top right of the image.

Quiktron

Custom Cabling Solution Guide

 legrand®

designed to be better.™



CUSTOM CABLING

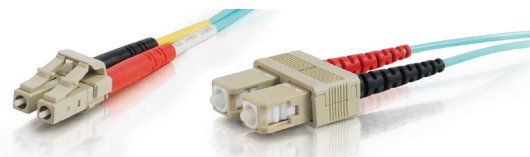
Legrand is a leader in network infrastructure solutions, with products designed to support your data center, building network or audio/video application. Our connectivity, physical support, cable management, cabinets, containment, and critical power solutions feature notable product lines like Ortronics, Quiktron, Approved Networks, Starline, Raritan, and Servertech for an integrated system that's designed to be better.

The Quiktron a brand of Legrand, serves the datacomm and telecommunication industries with custom manufacturing of fiber optic and copper cable assemblies, as well as distribution of more than 5,000 standard items through leading channel partners. With an ISO 9001:2008 certified facility in Hickory, North Carolina. Legrand has the solid expertise, advanced technology, and skilled personnel to meet all your cabling requirements.

These solutions are backed by industry leading sales, design, and support teams, which are the foundation for our comprehensive approach to network. At the core of everything Legrand does is a demand to deliver maximum performance, time savings, space optimization, superior customer experience, and sustainability by design, to address your challenges, today and tomorrow.

FIBER JUMPER CABLES

Legrand can produce a wide variety of fiber jumpers quickly and cost effectively. Standard multimode (50 and 62.5µm), laser-optimized multimode (OM3, OM4, OM5) and single-mode (OS2) assemblies are a core part of our business. Visually inspected and compliant to IEC 61300-35 at 400x magnification, the fiber jumpers are performance tested to meet or exceed the ANSI/TIA-568.3-E insertion loss and return loss parameters. The fiber jumpers are available in a variety of custom configurations – including choice of connector polish, diameter, jacket, and boot color.



Q-SERIES BUILT-TO-ORDER PATCH CABLES

- Insertion loss & reflectance measurements that meet or exceed ANSI/TIA-568.3-E standards
- Domestically manufactured using the highest quality components
- All cables and connectors are built to industry standards
- Wide variety of connectors available including ST, SC, LC, Uniboot LC, MTP/MPO and more
- Ultra PC and angled PC connector polishing options
- Advanced automated assembly and polishing techniques
- Factory termination results in superior performance compared to field terminated cables
- Available in Single-Mode OS2, or Multimode OM1, OM3, OM4, OM5
- Most items are available to ship with a 7-10 day lead time

Q-SERIES STOCK PATCH CABLES

- All cables and connectors are built to industry standards
- Wide variety of connectors available including ST, SC, LC, Uniboot LC and more
- Insertion loss and reflectance measured on every connector to meet or exceed ANSI/TIA-568.3-E standards
- We offer ultra PC and angled PC connector polishing options
- Factory termination results in superior performance compared to field terminated cables
- Available in Single-Mode OS2, or Multimode OM3 and OM4
- Simplex and duplex cable
- Most items are available for same day shipping

FEATURES

- 100% optically tested
- Factory terminated for superior performance
- Meets or exceeds ANSI/TIA-568.3-E standards for insertion loss and back reflection
- Stock available for same day shipping
- Stock available for same day shipping
- Custom assemblies available to ship within days
- TAA compliant assemblies available upon request
- Most connector brands supported upon request
- Test results available upon request

FIBER TRUNKS

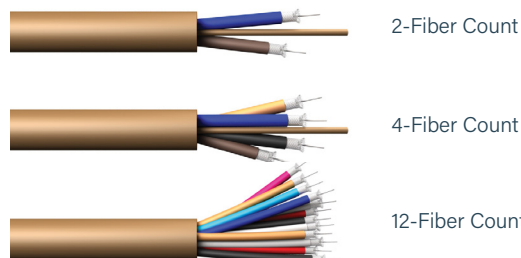
Quiktron is regarded as the leader in providing Built-To-Order fiber optic solutions, specializing in providing multi-fiber assemblies, including MTP®, that meet the customers' specifications and time requirements. These cables save field termination time and money, while providing a superior factory termination.

BUILT-TO-ORDER FIBER BENEFITS

- Faster, easier installation
- Improved performance
- Greater savings
- Quick turnaround time

BUILT-TO-ORDER FIBER TRUNK OPTIONS

- Available in Single-Mode OS2, or Multimode OM1, OM3, OM4, and OM5
- Multi-fiber solutions (pre-terms)
- MTP/MPO trunk and break-out cables
- Custom solutions for plenum, low smoke zero halogen, direct burial and riser applications
- ST, SC, LC, Uniboot LC, MTP/MPO connectors
- Up to 288-count fiber
- Custom lengths
- Identification labels
- Pulling eyes
- Installer-friendly spools for faster and easier installation



OPTICAL FIBER CABLE SOLUTIONS

- ✓ **Fiber Types:**
 - Multimode OM1, OM2, OM3, OM4, OM5
 - Single-mode OS2
- ✓ **Fiber Count and Construction:**
 - 1-288 strands
 - Distribution Cable, Loose Tube Cable, Mini-Distribution Cable, Breakout Cable, Interconnect Cable
 - Indoor, Indoor/Outdoor
 - Outside Plant
- ✓ **Flame Ratings:**
 - OFNR/OFNR – FT4 (Riser)
 - OFNP/OFNP – FT6 (Plenum)
 - LSZH
 - OFNR-LS-ST1
- ✓ **Specialty Fiber Types:** Fiber specifically designed to be installed outside, either underground or from pole to pole
- ✓ **Direct Burial:** Armored fiber which is designed to be buried and for ruggedized environment
- ✓ **Underground:** Non-armored fiber designed to be installed in a conduit
- ✓ **Fiber with Messenger:** Built-in metal cable to attach to buildings/poles for support
- ✓ **Lash-able:** Designed to be attached with metal bands (lashed) to existing cable
- ✓ **Self-Supporting:** Extra rugged to support its own weight over a specific span; does not have a messenger wire attached
- ✓ **Interlocking Armor:** Interlocking armored fiber has a built-in armor surrounding the cable jacket enabling it to be installed without conduit

COPPER PATCH CABLES

Quiktron Cat 5e, Cat6 and Cat6a Patch Cords deliver reliable performance and exceptional value. Each cable meets or exceeds standards and are designed to handle bandwidth intensive applications.

Q-SERIES BUILT-TO-ORDER PATCH CABLES

- Cat 5e, Cat 6, Cat 6a
- Available in black, blue, gray, green, orange, purple, red, white and yellow
- Slim, Non-booted, booted, Slimline boots, cross-over, shielded
- Domestically manufactured using quality components
- Outside plant cable available
- Custom lengths
- CAT6 and CAT6a are tested to meet TIA-568-2.D channel performance

Q-SERIES STOCK PATCH CABLES

- Cat 5e, Cat 6, Cat6a
- Available in black, blue, gray, green, orange, purple, red, white and yellow
- Stocked in lengths of 1, 3, 5, 7, 10, 14, 25 and 50 feet
- Slim, booted, non-booted
- CAT6 and CAT6a are tested to meet TIA-568-2.D channel performance
- Available for same day shipping



TRUNKS & PRE-TERMINATED CABLE ASSEMBLIES

- ✓ Bundled with choice of expandable mesh, hook and loop or wire ties
- ✓ Cat5e, Cat6, Cat6a
- ✓ 6-12 cable trunks
- ✓ Built to custom lengths up to 125ft
- ✓ Custom labeling available
- ✓ Solid wire – plenum rated Available in the following configurations:
 - RJ45 Plug to RJ45 Plug
 - RJ45 Jack to RJ45 Jack
 - RJ45 Plug to RJ45 Jack

ADDITIONAL SERVICES OFFERED

Legrand's goal is to provide their customers with more than just a quality product – Legrand is committed to bringing you the most personal, knowledgeable, and timely service in the industry.

- Onsite RCDDs
- Technical Support
- Field Representation
- Inside Sales Support for distribution
- Custom part numbering
- Custom labeling
- Drawings
- Kitting
- Full line of Audio/Video



Data Communications
60 Woodlawn Street
West Hartford, CT 06110
800.934.5432
legrand.us