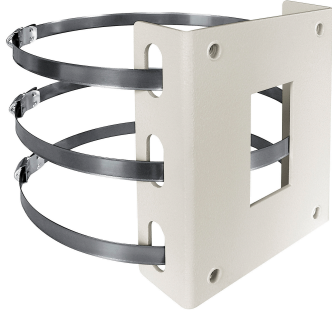


SHB-V-DBHWGC

Pole Mount Adaptor



DESCRIPTION

Pole mount adapter, (Ø 8.2", max 8.9") for outdoor enclosure: SHB-V-3200HPR.

Constructed from steel and epoxy-polyester powder painted, color RAL9002.

Note: The SHB-V-WCPA is also needed for pole mount installation.

TECHNICAL DATA

MECHANICAL

Made of steel

For pole diameters: from 210mm (8.3in) up to 225mm (8.8in)

Load rating: 25kg (55lb) (static load)

To be combined with the Conduit adapter/reinforcing support plate SHB-V-WCPA

Unit weight: 1.2kg (2.6lb)

TECHNICAL DRAWINGS

The indicated measurements are expressed in millimetres.

