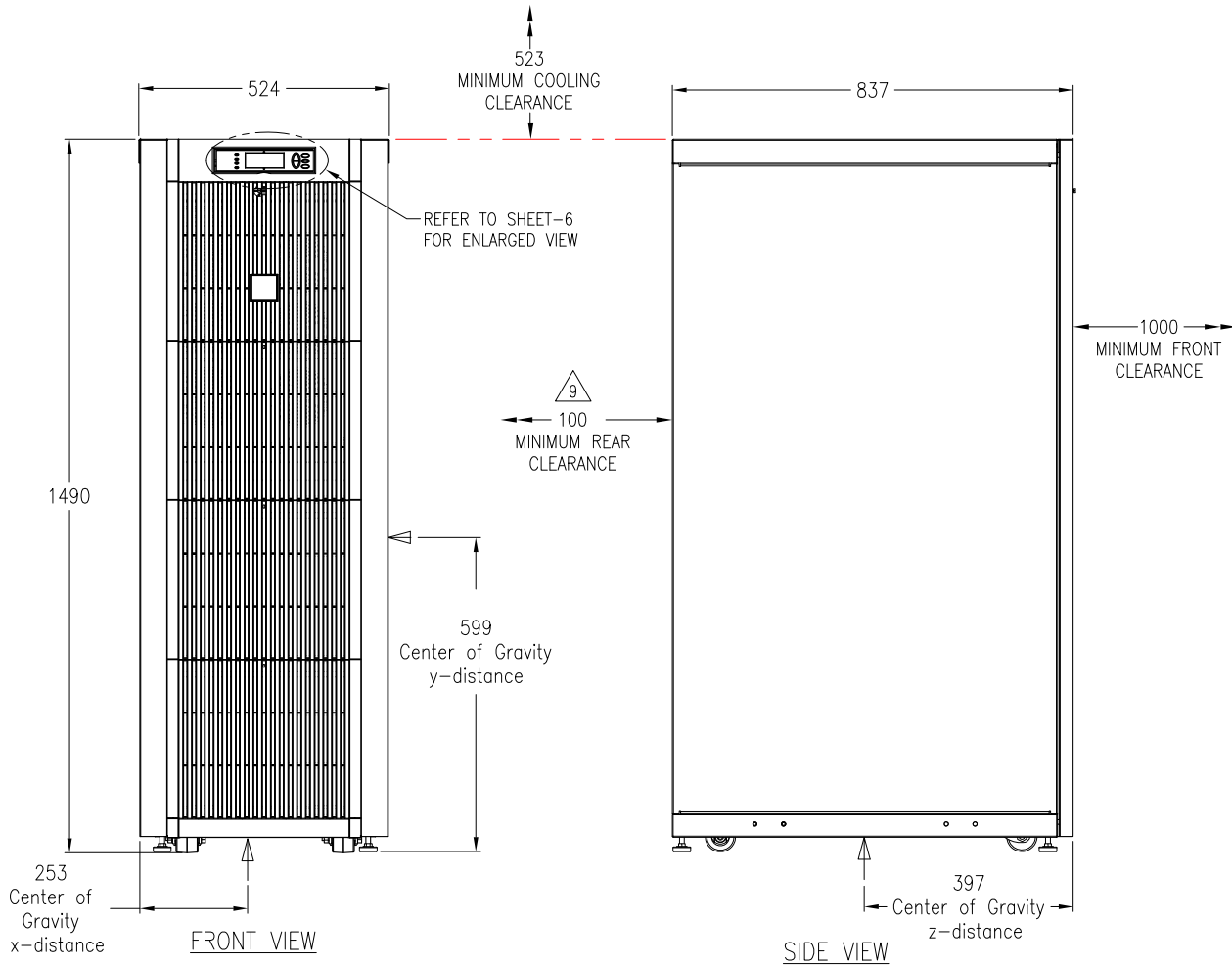


NOTES:

1. INSTALLATION MUST COMPLY WITH ALL APPLICABLE NATIONAL AND LOCAL CODES.
2. PLEASE REFER TO INSTALLATION MANUAL FOR DETAILED INFORMATION.
3. UNLESS OTHERWISE SPECIFIED, ALL DIMENSIONS ARE IN MILLIMETERS.
4. CABLE ENTRY IS REAR OF UNIT; SEE UNIT WITH OPTIONAL CONDUIT BOX ON SHEET 3.
5. FRONT AND REAR SERVICE CLEARANCE, TOP COOLING CLEARANCE REQUIRED.
6. WEIGHT OF UNIT IS 633 kg.
- △ 7. OPTION REPRESENTED BY THIS DRAWING.
8. RUNTIME CAN BE EXTENDED WITH ADDITIONAL BATTERY MODULES AND BATTERY CABINETS (SEE CHART).
- △ 9. USE FLEXIBLE CONDUIT WITH SUFFICIENT LENGTH TO ALLOW THE UNIT TO BE MOVED OUT FOR SERVICE.

RUN-TIME CHART AT 0.8 PF

Battery position	Number of Battery Modules	Run-Time in Minutes
SUVTP15KH4B4	4	27
SUVTP15KH4B4+(1)SUVTBXR2B6S	6	47
SUVTP15KH4B4+(1)SUVTBXR2B6S+(1)SYBT4	7	57
SUVTP15KH4B4+(1)SUVTBXR2B6S+(2)SYBT4	8	68
SUVTP15KH4B4+(1)SUVTBXR2B6S+(3)SYBT4	9	79
SUVTP15KH4B4+(1)SUVTBXR6B6S	10	90
SUVTP15KH4B4+(2)SUVTBXR6B6S	16	161
SUVTP15KH4B4+(3)SUVTBXR6B6S	22	237
SUVTP15KH4B4+(4)SUVTBXR6B6S	28	316



THIS DRAWING AND SPECIFICATIONS HEREIN ARE THE PROPERTY OF SCHNEIDER ELECTRIC AND SHALL NOT BE COPIED, REPRODUCED OR USED IN WHOLE OR IN PART, AS THE BASIS FOR THE MANUFACTURE OR SALE OF ITEMS WITHOUT WRITTEN PERMISSION FROM SCHNEIDER ELECTRIC. THIS DRAWING IS BASED UPON LATEST AVAILABLE INFORMATION AND IS SUBJECT TO CHANGE WITHOUT NOTICE.



TITLE: SMART-UPS VT, PARALLEL CAPABLE
15kVA, 400/230VAC, 3Ø
w/ (4) BATTERY MODULES
MAIN MECHANICAL

PROJECT: SUBMITTAL DRAWING SHEET: 1 OF 9

DWG NO: SUVTP15KH4B4

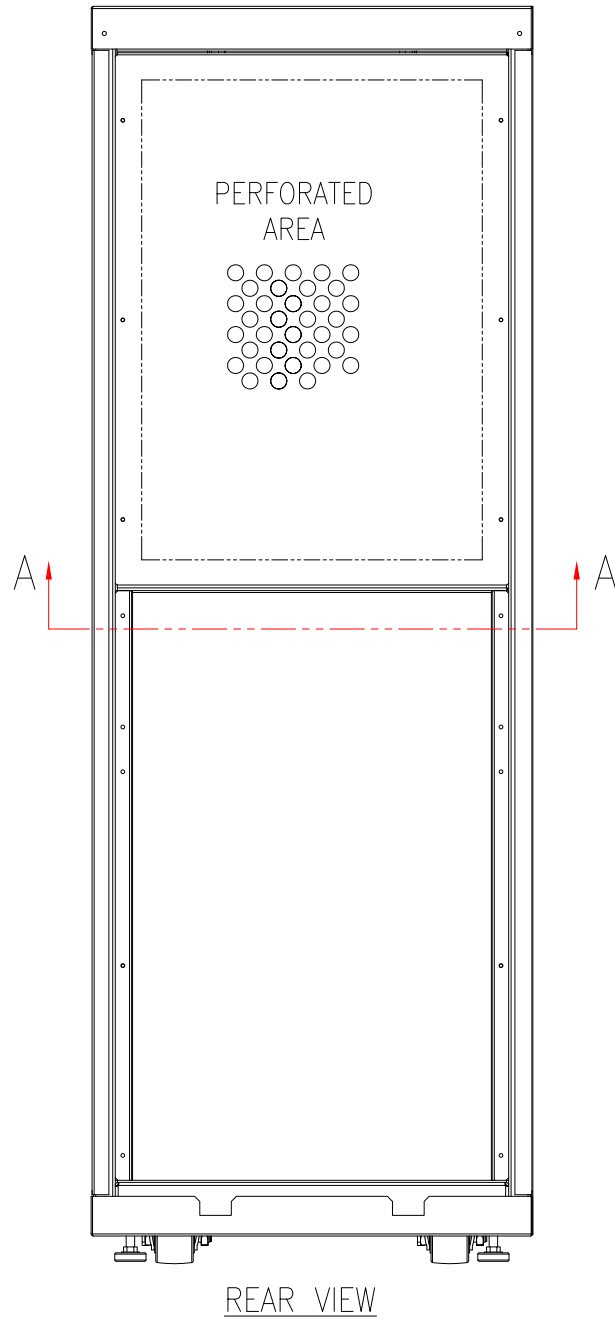
DRAWN: C KRISHNA/S CUNHA 06FEB2015

ENGINEER: D PETERSEN/A WARNER 10MAR2009

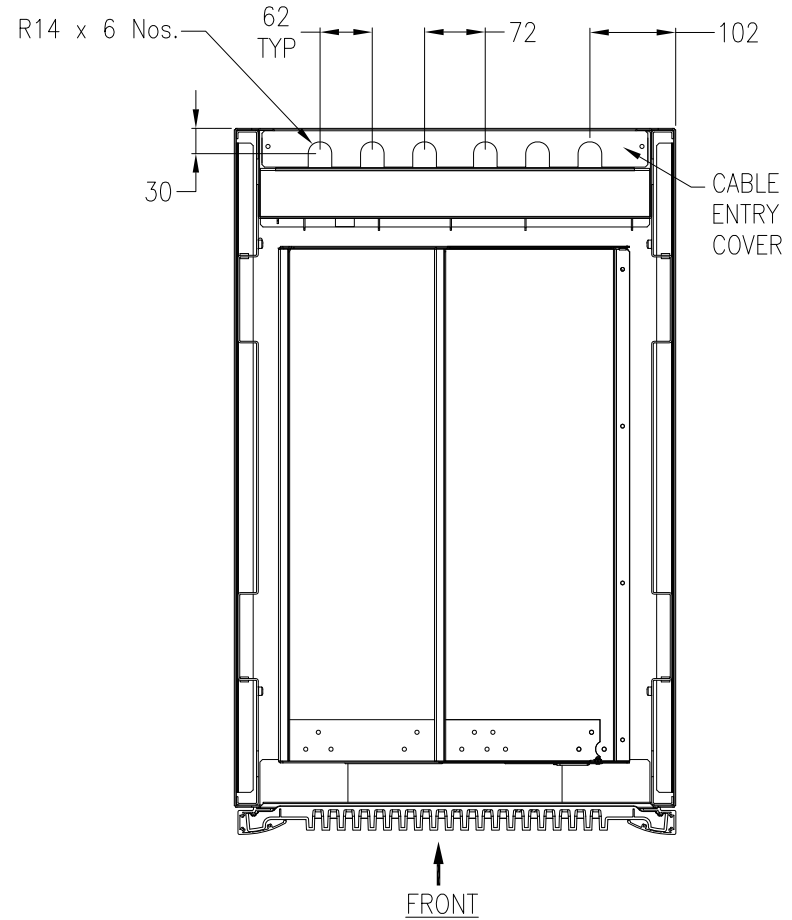
APPROVED: C LARSEN/S WAGH/E SILVA 10MAR2009

REV. 2

FIRST ANGLE PROJ



REAR VIEW



SECTION - AA

NOTES:

1. INSTALLATION MUST COMPLY WITH ALL APPLICABLE NATIONAL AND LOCAL CODES.
2. PLEASE REFER TO INSTALLATION MANUAL FOR DETAILED INFORMATION.
3. UNLESS OTHERWISE SPECIFIED, ALL DIMENSIONS ARE IN MILLIMETERS.

THIS DRAWING AND SPECIFICATIONS HEREIN ARE THE PROPERTY OF SCHNEIDER ELECTRIC AND SHALL NOT BE COPIED, REPRODUCED OR USED IN WHOLE OR IN PART, AS THE BASIS FOR THE MANUFACTURE OR SALE OF ITEMS WITHOUT WRITTEN PERMISSION FROM SCHNEIDER ELECTRIC. THIS DRAWING IS BASED UPON LATEST AVAILABLE INFORMATION AND IS SUBJECT TO CHANGE WITHOUT NOTICE.



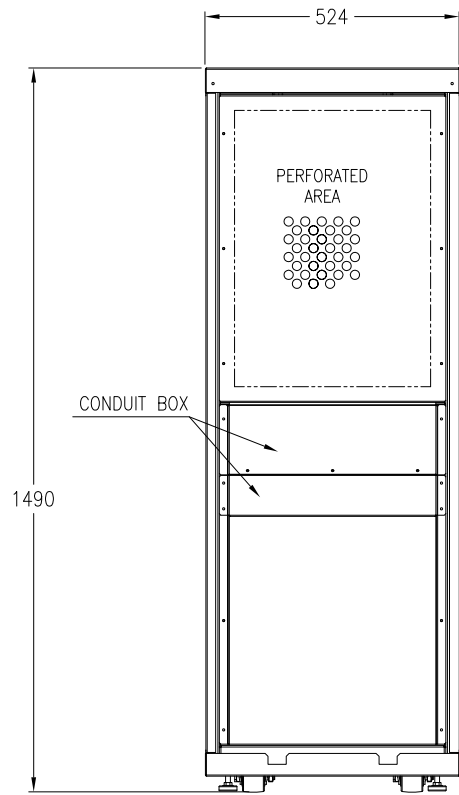
TITLE:
SMART-UPS VT, PARALLEL CAPABLE
15kVA, 400/230VAC, 3Ø
w/ (4) BATTERY MODULES
REAR VIEW & SECTION

PROJECT: SUBMITTAL DRAWING SHEET: 2 OF 9

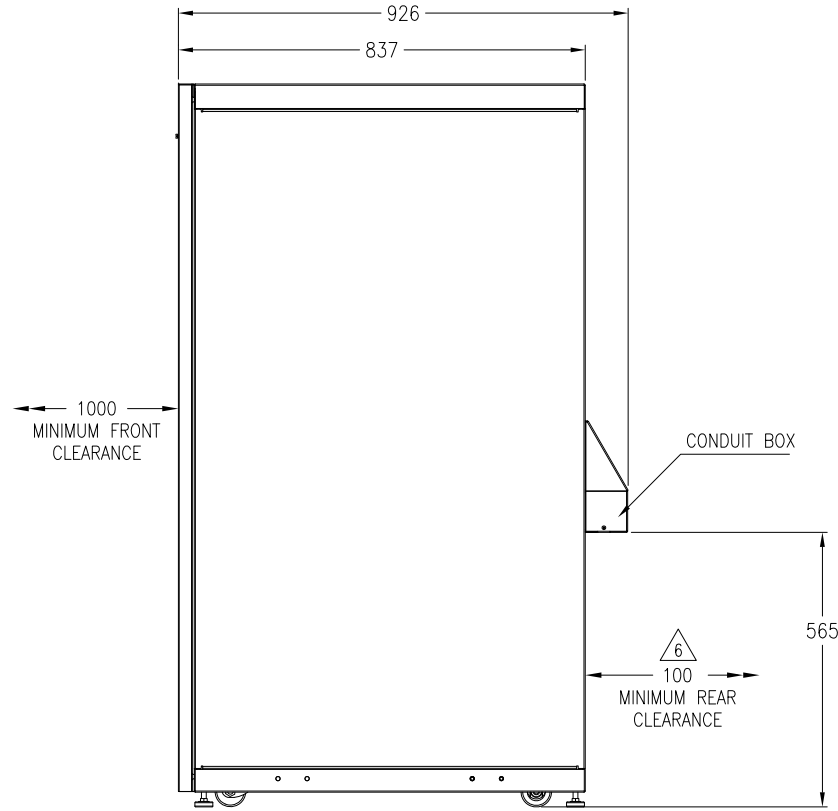
DWG NO: **SUVTP15KH4B4** REV. 2

DRAWN: C KRISHNA/S CUNHA	06FEB2015	FIRST ANGLE PROJ
ENGINEER: D PETERSEN/A WARNER	10MAR2009	
APPROVED: C LARSEN/S WAGH/E SILVA	10MAR2009	

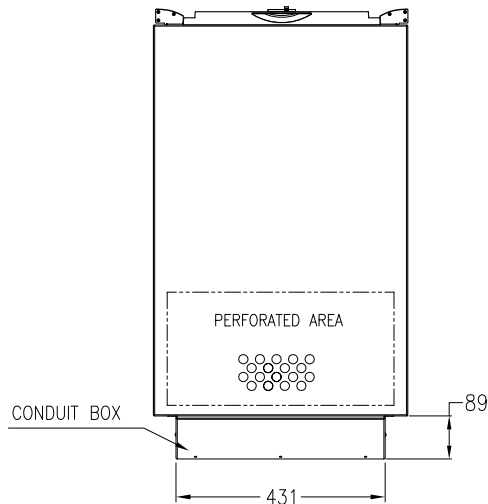
UNIT WITH OPTIONAL CONDUIT BOX



REAR VIEW



SIDE VIEW



TOP VIEW

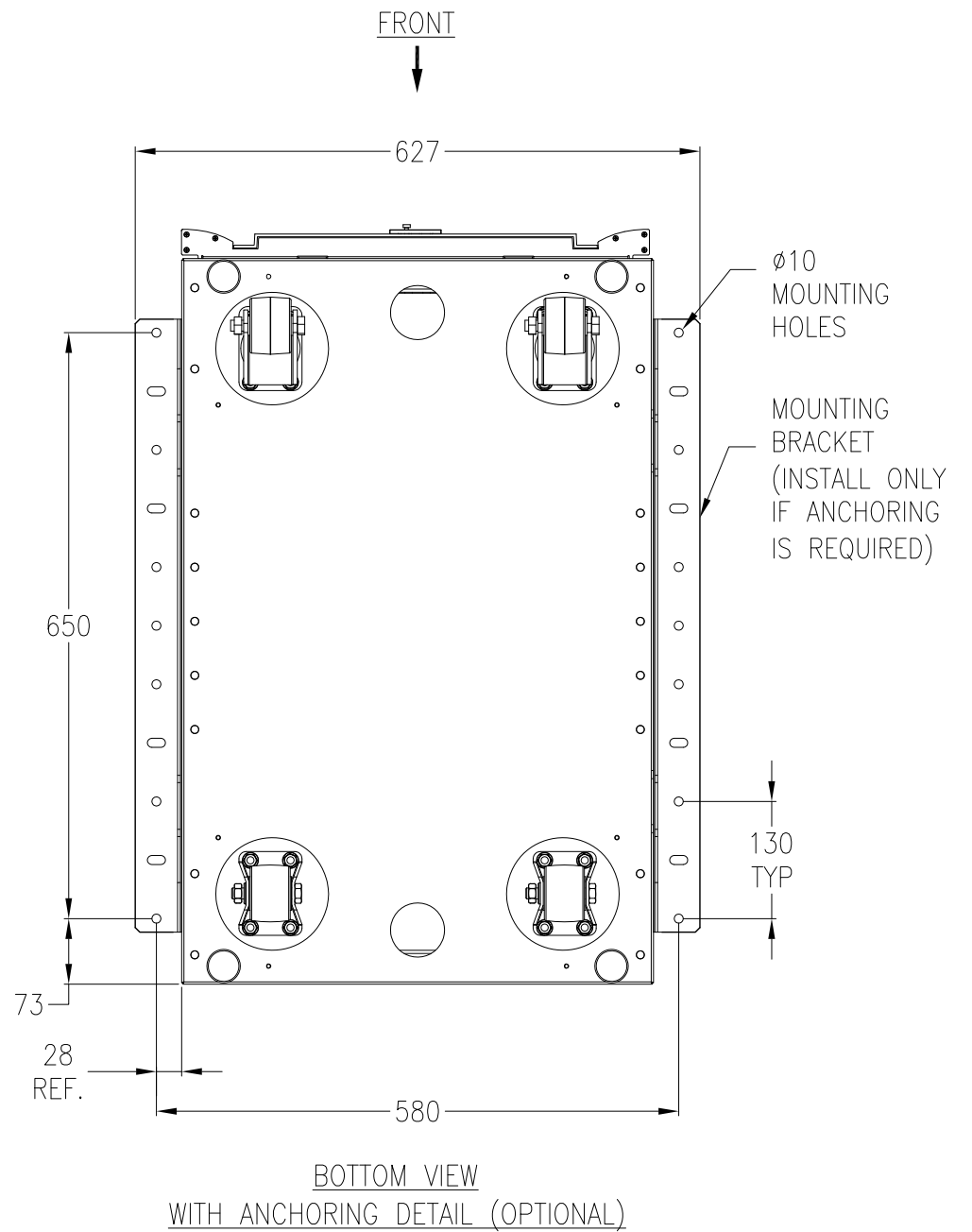
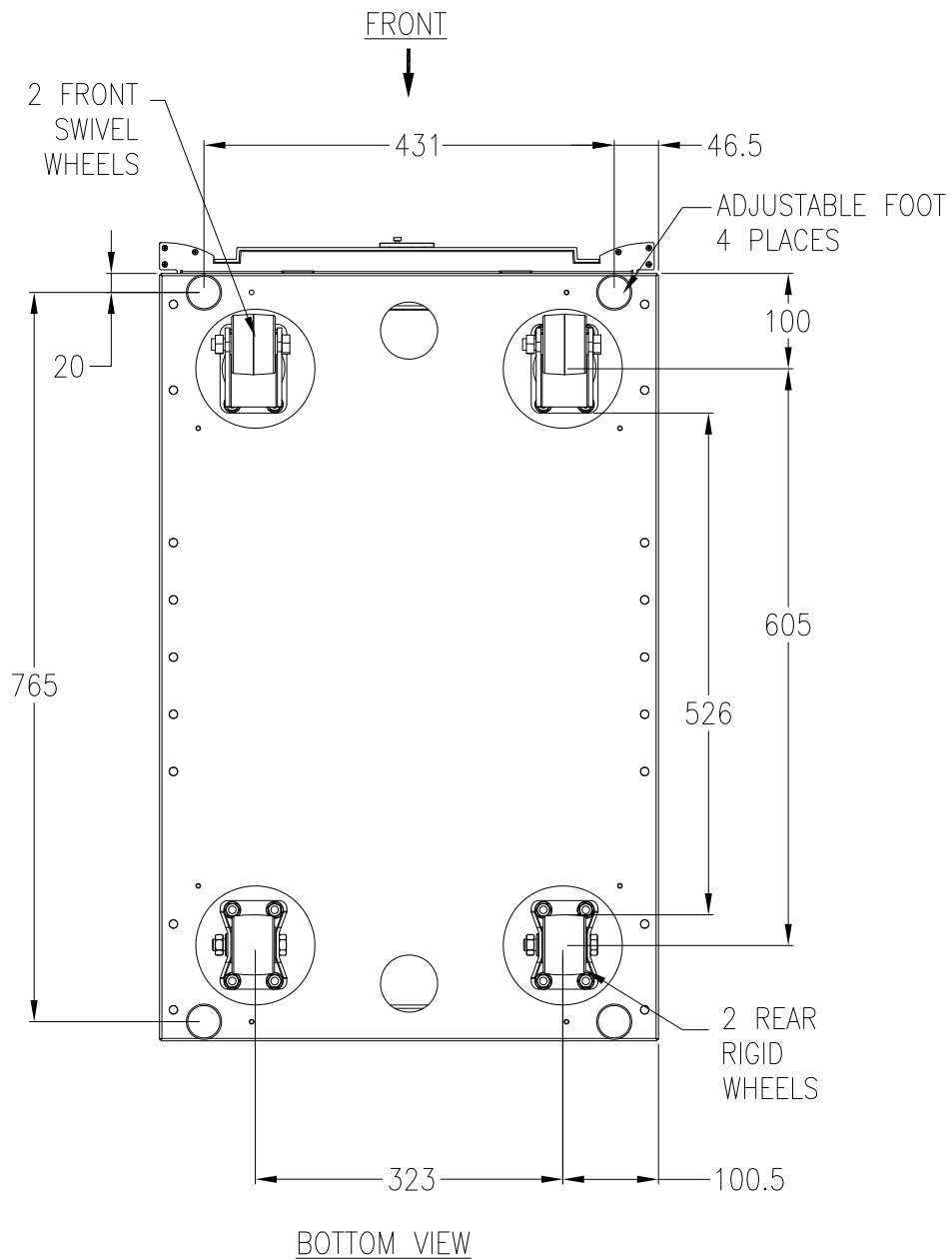
NOTES:

1. INSTALLATION MUST COMPLY WITH ALL APPLICABLE NATIONAL AND LOCAL CODES.
2. PLEASE REFER TO INSTALLATION MANUAL FOR DETAILED INFORMATION.
3. UNLESS OTHERWISE SPECIFIED, ALL DIMENSIONS ARE IN MILLIMETERS.
4. SOME STRUCTURAL DETAILS HAVE BEEN OMITTED FOR THE PURPOSE OF CLARITY.
5. CONDUIT BOX IS NOT PROVIDED WITH THE STANDARD UNIT BUT HAS TO BE ORDERED AS AN OPTION.
- △ 6. USE FLEXIBLE CONDUIT WITH SUFFICIENT LENGTH TO ALLOW THE UNIT TO BE MOVED OUT FOR SERVICE.

THIS DRAWING AND SPECIFICATIONS HEREIN ARE THE PROPERTY OF SCHNEIDER ELECTRIC AND SHALL NOT BE COPIED, REPRODUCED OR USED IN WHOLE OR IN PART, AS THE BASIS FOR THE MANUFACTURE OR SALE OF ITEMS WITHOUT WRITTEN PERMISSION FROM SCHNEIDER ELECTRIC. THIS DRAWING IS BASED UPON LATEST AVAILABLE INFORMATION AND IS SUBJECT TO CHANGE WITHOUT NOTICE.



TITLE:		SMART-UPS VT, PARALLEL CAPABLE 15kVA, 400/230VAC, 3Ø w/ (4) BATTERY MODULES CONDUIT BOX OPTION		DWG NO:	SUVTP15KH4B4	REV:	2
PROJECT:	SUBMITTAL DRAWING	SHEET:	3 OF 9	DRAWN:	C KRISHNA/S CUNHA	06FEB2015	FIRST ANGLE PROJ
APPROVED:		C LARSEN/S WAGH/E SILVA		ENGINEER:	D PETERSEN/A WARNER	10MAR2009	10MAR2009



NOTES:

1. INSTALLATION MUST COMPLY WITH ALL APPLICABLE NATIONAL AND LOCAL CODES.
2. PLEASE REFER TO INSTALLATION MANUAL FOR DETAILED INFORMATION.
3. UNLESS OTHERWISE SPECIFIED, ALL DIMENSIONS ARE IN MILLIMETERS.
4. SOME STRUCTURAL DETAILS HAVE BEEN OMITTED FOR THE PURPOSE OF CLARITY.
5. CONDUIT BOX IS NOT PROVIDED WITH THE STANDARD UNIT BUT HAS TO BE ORDERED AS AN OPTION.

THIS DRAWING AND SPECIFICATIONS HEREIN ARE THE PROPERTY OF SCHNEIDER ELECTRIC AND SHALL NOT BE COPIED, REPRODUCED OR USED IN WHOLE OR IN PART, AS THE BASIS FOR THE MANUFACTURE OR SALE OF ITEMS WITHOUT WRITTEN PERMISSION FROM SCHNEIDER ELECTRIC. THIS DRAWING IS BASED UPON LATEST AVAILABLE INFORMATION AND IS SUBJECT TO CHANGE WITHOUT NOTICE.

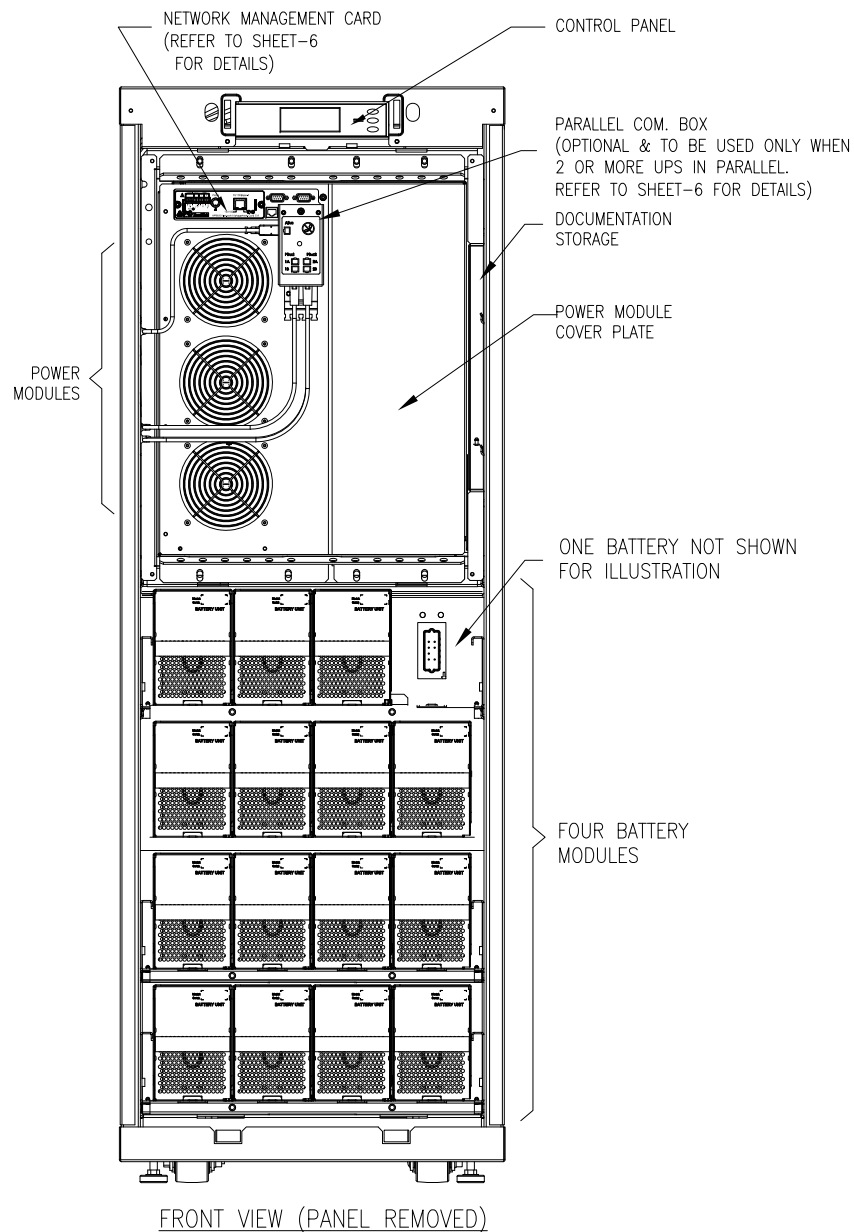


TITLE:
SMART-UPS VT, PARALLEL CAPABLE
15kVA, 400/230VAC, 3Ø
w/ (4) BATTERY MODULES
BOTTOM VIEW & ANCHORING DETAILS

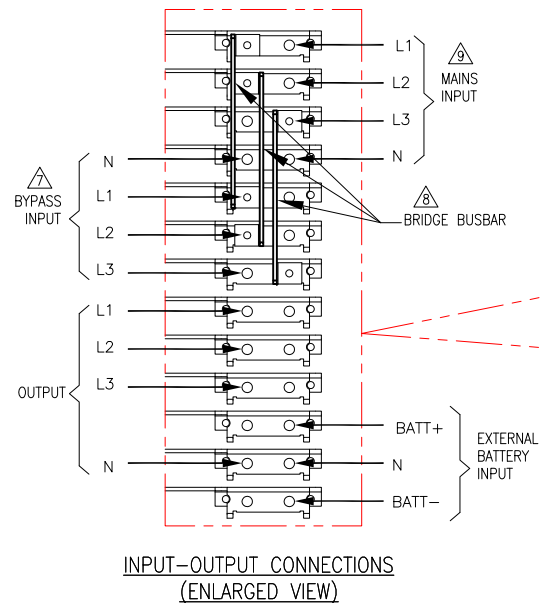
PROJECT: SUBMITTAL DRAWING **SHEET:** 4 OF 9

DWG NO: SUVTP15KH4B4 **REV:** 2

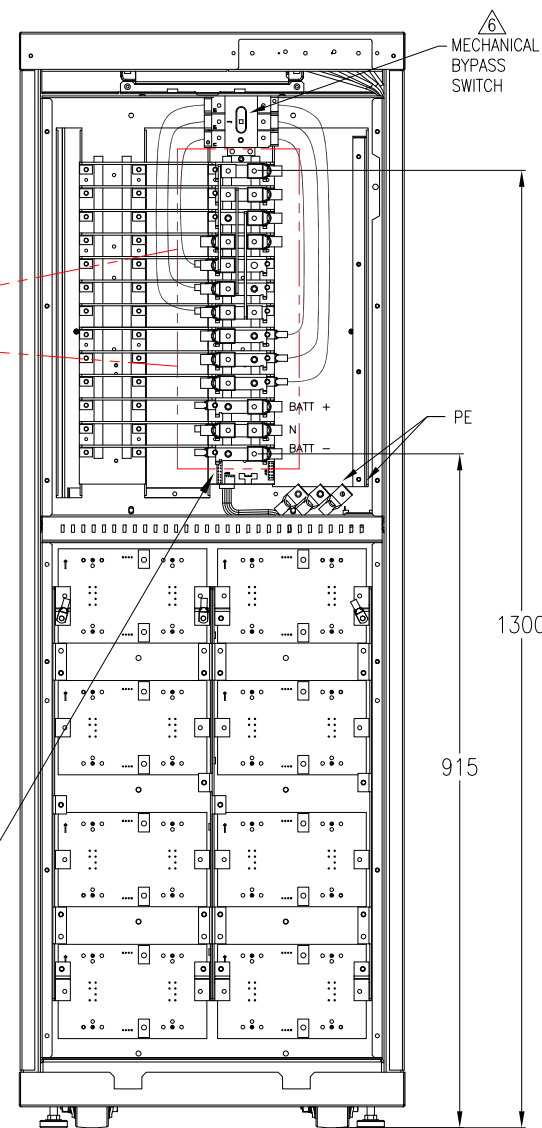
DRAWN: C KRISHNA/S CUNHA	06FEB2015	FIRST ANGLE PROJ
ENGINEER: D PETERSEN/A WARNER	10MAR2009	
APPROVED: C LARSEN/S WAGH/E SILVA	10MAR2009	



FRONT VIEW (PANEL REMOVED)



INPUT-OUTPUT CONNECTIONS
(ENLARGED VIEW)



REAR VIEW (PANEL REMOVED)

NOTES:

1. INSTALLATION MUST COMPLY WITH ALL APPLICABLE NATIONAL AND LOCAL CODES.
2. PLEASE REFER TO INSTALLATION MANUAL FOR DETAILED INFORMATION.
3. UNLESS OTHERWISE SPECIFIED, ALL DIMENSIONS ARE IN MILLIMETERS.
4. SOME STRUCTURAL DETAILS HAVE BEEN OMITTED FOR THE PURPOSE OF CLARITY.
5. SUVTP UPS IS DESIGNED FOR SINGLE AND DUAL MAINS. SINGLE MAINS INSTALLATION IS A DEFAULT.
- △6. THE MECHANICAL BYPASS SWITCH MUST BE REMOVED WHEN THE UPS IS TO RUN IN PARALLEL.
- △7. FOR DUAL MAINS ONLY.
- △8. TO BE REMOVED FOR DUAL MAINS INSTALLATION.
- △9. THE MAINS INPUT NEUTRAL SHOULD BE FED ONLY FOR SINGLE MAINS CONFIGURATION . FOR DUAL MAINS CONFIGURATION THE MAINS INPUT NEUTRAL SHOULD NOT BE FED.

THIS DRAWING AND SPECIFICATIONS HEREIN ARE THE PROPERTY OF SCHNEIDER ELECTRIC AND SHALL NOT BE COPIED, REPRODUCED OR USED IN WHOLE OR IN PART, AS THE BASIS FOR THE MANUFACTURE OR SALE OF ITEMS WITHOUT WRITTEN PERMISSION FROM SCHNEIDER ELECTRIC. THIS DRAWING IS BASED UPON LATEST AVAILABLE INFORMATION AND IS SUBJECT TO CHANGE WITHOUT NOTICE.

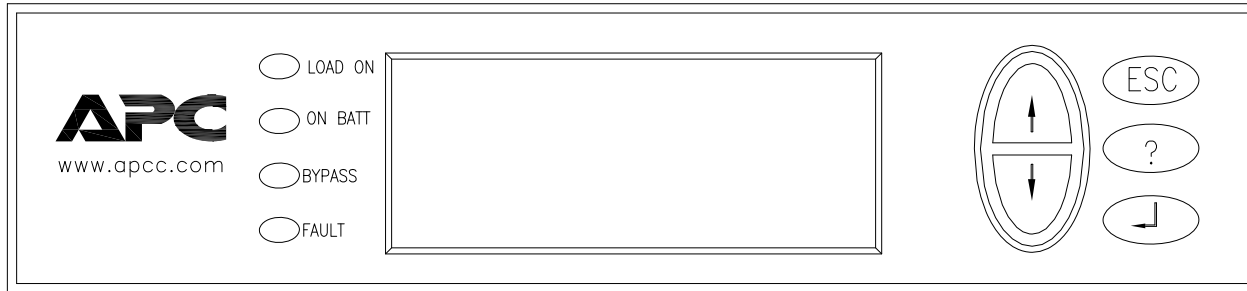


TITLE: SMART-UPS VT, PARALLEL CAPABLE
15kVA, 400/230VAC, 3Ø
w/ (4) BATTERY MODULES
INPUT / OUTPUT DETAILS

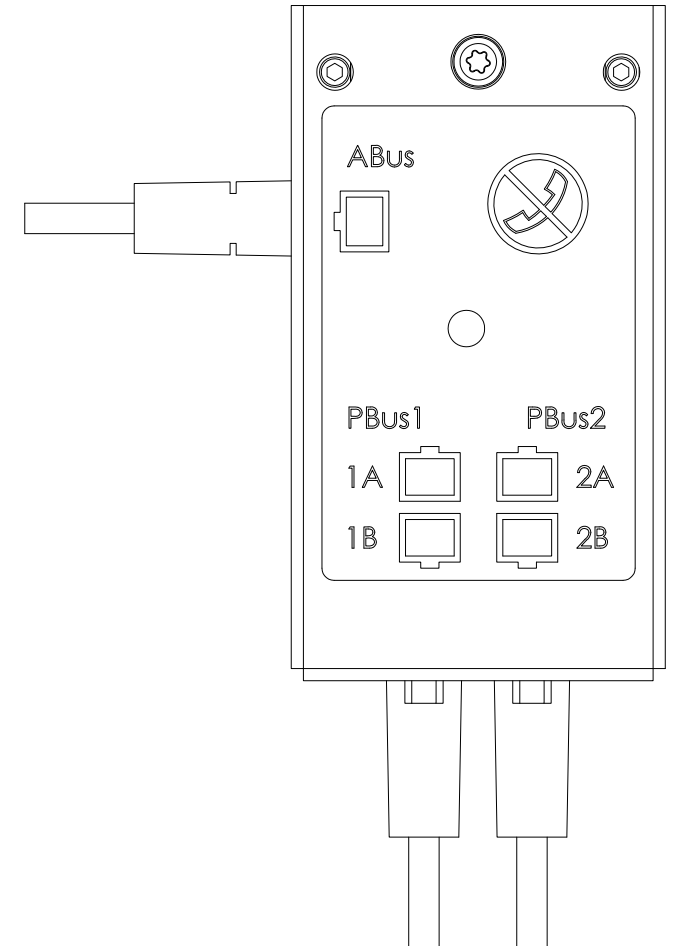
PROJECT: SUBMITTAL DRAWING SHEET: 5 OF 9

DWG NO: **SUVTP15KH4B4**
DRAWN: C KRISHNA/S CUNHA/BALA 20NOV2015
ENGINEER: D PETERSEN/A WARNER 20NOV2015
APPROVED: S ANDERSEN/S WAGHE/SILVA 20NOV2015

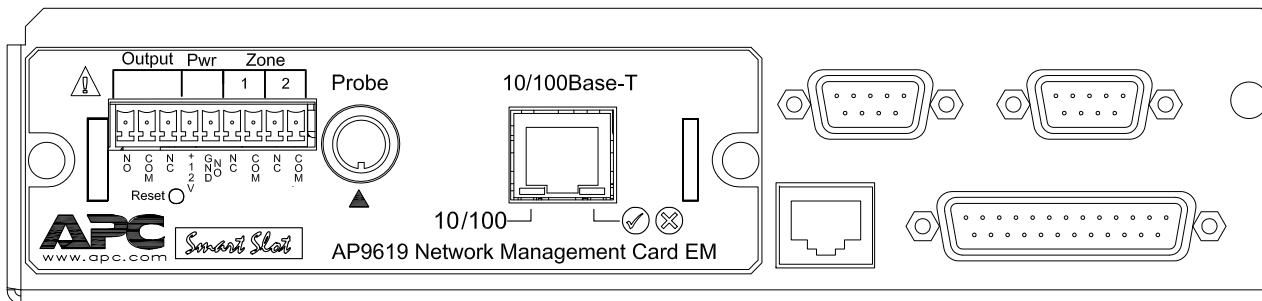
REV. **3**
FIRST ANGLE PROJ



CONTROL PANEL



PARALLEL COMMUNICATION BOX
(OPTIONAL)



NETWORK MANAGEMENT CARD

NOTES:

1. INSTALLATION MUST COMPLY WITH ALL APPLICABLE NATIONAL AND LOCAL CODES.
2. PLEASE REFER TO INSTALLATION MANUAL FOR DETAILED INFORMATION.

THIS DRAWING AND SPECIFICATIONS HEREIN ARE THE PROPERTY OF SCHNEIDER ELECTRIC AND SHALL NOT BE COPIED, REPRODUCED OR USED IN WHOLE OR IN PART, AS THE BASIS FOR THE MANUFACTURE OR SALE OF ITEMS WITHOUT WRITTEN PERMISSION FROM SCHNEIDER ELECTRIC. THIS DRAWING IS BASED UPON LATEST AVAILABLE INFORMATION AND IS SUBJECT TO CHANGE WITHOUT NOTICE.



TITLE:
SMART-UPS VT, PARALLEL CAPABLE
15kVA, 400/230VAC, 3Ø
w/ (4) BATTERY MODULES
CONTROL PANEL & NMC DETAILS

PROJECT: SUBMITTAL DRAWING SHEET: 6 OF 9

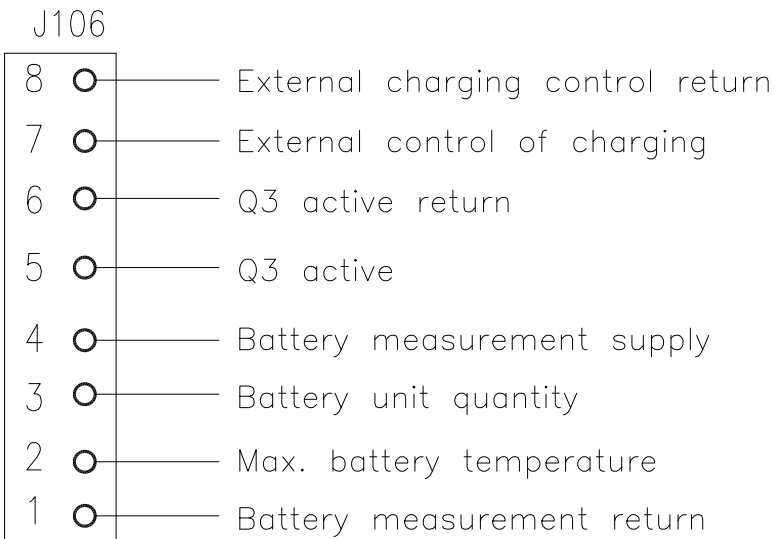
DWG NO: **SUVTP15KH4B4** REV. 2

DRAWN: C KRISHNA/S CUNHA	06FEB2015	PROJ ANGLE N/A
ENGINEER: D PETERSEN/A WARNER	10MAR2009	
APPROVED: C LARSEN/S WAGH/E SILVA	10MAR2009	

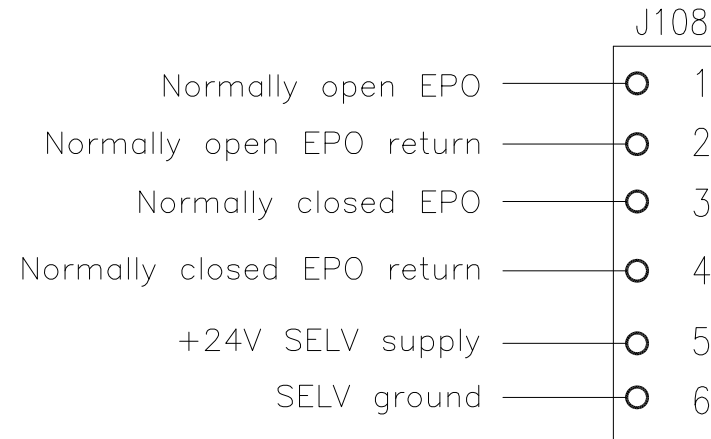


COMMUNICATION BOARD

J106 PIN CONNECTIONS



J108 PIN CONNECTIONS



NOTES:

1. INSTALLATION MUST COMPLY WITH ALL APPLICABLE NATIONAL AND LOCAL CODES.
2. PLEASE REFER TO INSTALLATION MANUAL FOR DETAILED INFORMATION.

THIS DRAWING AND SPECIFICATIONS HEREIN ARE THE PROPERTY OF SCHNEIDER ELECTRIC AND SHALL NOT BE COPIED, REPRODUCED OR USED IN WHOLE OR IN PART, AS THE BASIS FOR THE MANUFACTURE OR SALE OF ITEMS WITHOUT WRITTEN PERMISSION FROM SCHNEIDER ELECTRIC. THIS DRAWING IS BASED UPON LATEST AVAILABLE INFORMATION AND IS SUBJECT TO CHANGE WITHOUT NOTICE.



TITLE:
SMART-UPS VT, PARALLEL CAPABLE
15kVA, 400/230VAC, 3Ø
w/ (4) BATTERY MODULES
COMMUNICATION BOARD DETAILS

PROJECT: SUBMITTAL DRAWING SHEET: 7 OF 9

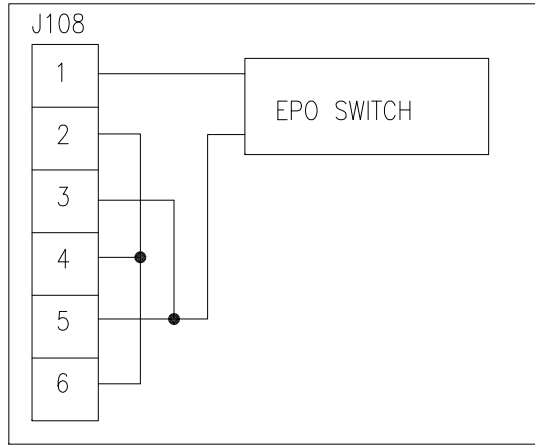
DWG NO: **SUVTP15KH4B4** REV. **2**

DRAWN: C KRISHNA/S CUNHA	06FEB2015
ENGINEER: D PETERSEN/A WARNER	10MAR2009
APPROVED: C LARSEN/S WAGH/E SILVA	10MAR2009

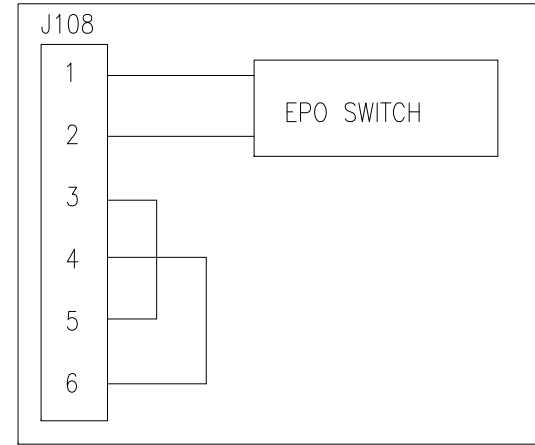
PROJ
ANGLE
N/A

EPO WIRING OPTIONS (J108)
CONNECT THE EPO CABLE, USING ONE OF THE FOLLOWING 4 WIRING CONFIGURATIONS.

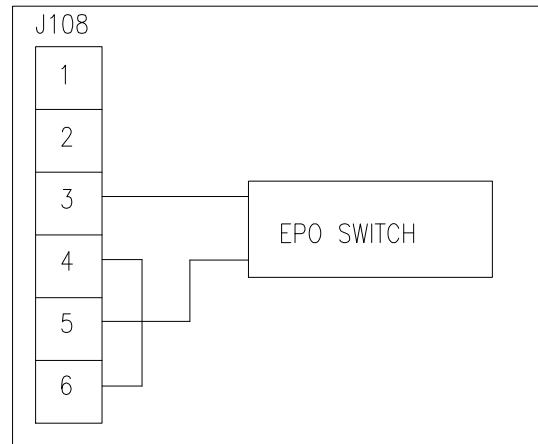
1: DRY NORMALLY OPEN CONTACTS



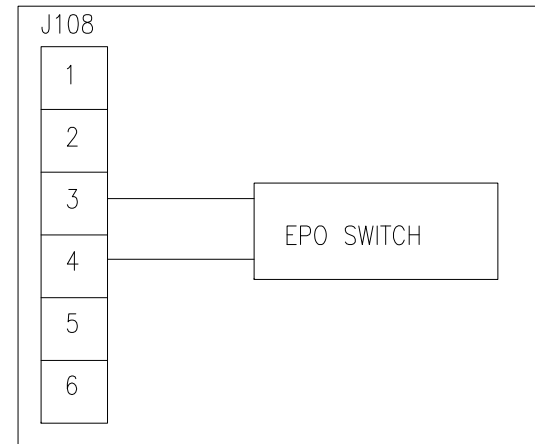
2: +24V NORMALLY OPEN



3: DRY NORMALLY CLOSED CONTACTS



4: +24V NORMALLY CLOSED



NOTES:

1. INSTALLATION MUST COMPLY WITH ALL APPLICABLE NATIONAL AND LOCAL CODES.
2. PLEASE REFER TO INSTALLATION MANUAL FOR DETAILED INFORMATION.
3. FOR COMMUNICATION CABLES USE ONLY 1-1.5 SQ. mm COPPER WIRE RATED MINIMUM 250V.

THIS DRAWING AND SPECIFICATIONS HEREIN ARE THE PROPERTY OF SCHNEIDER ELECTRIC AND SHALL NOT BE COPIED, REPRODUCED OR USED IN WHOLE OR IN PART, AS THE BASIS FOR THE MANUFACTURE OR SALE OF ITEMS WITHOUT WRITTEN PERMISSION FROM SCHNEIDER ELECTRIC. THIS DRAWING IS BASED UPON LATEST AVAILABLE INFORMATION AND IS SUBJECT TO CHANGE WITHOUT NOTICE.



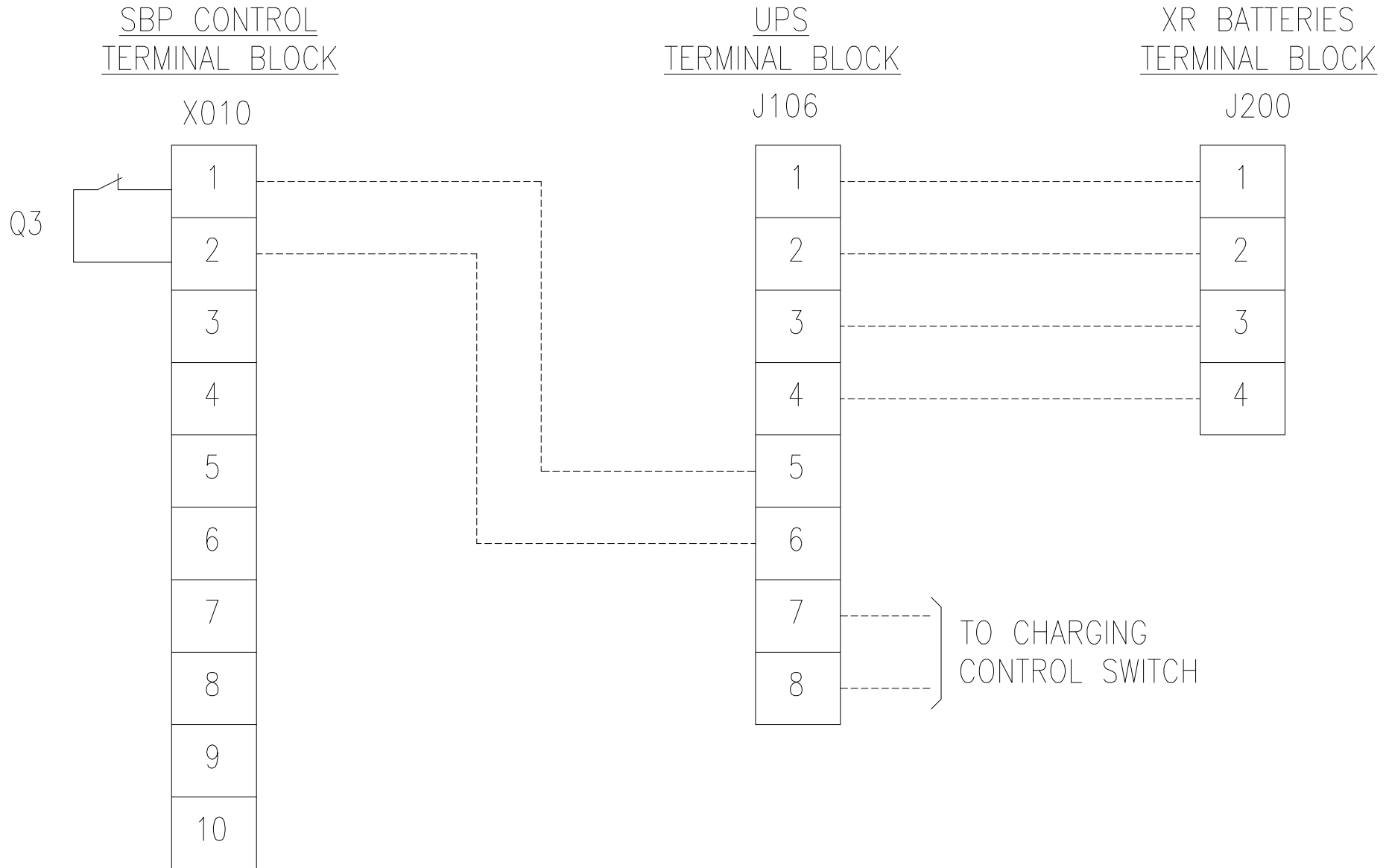
TITLE:
SMART-UPS VT, PARALLEL CAPABLE
15kVA, 400/230VAC, 3Ø
w/ (4) BATTERY MODULES
EPO CIRCUIT WIRING DIAGRAM OPTIONS

PROJECT: SUBMITTAL DRAWING SHEET: 8 OF 9

DWG NO: **SUVTP15KH4B4** REV. **2**

DRAWN: C KRISHNA/S CUNHA	06FEB2015	PROJ ANGLE N/A
ENGINEER: D PETERSEN/A WARNER	10MAR2009	
APPROVED: C LARSEN/S WAGH/E SILVA	10MAR2009	

SYSTEM CONTROL CONNECTIONS



NOTES:

1. INSTALLATION MUST COMPLY WITH ALL APPLICABLE NATIONAL AND LOCAL CODES.
2. PLEASE REFER TO INSTALLATION MANUAL FOR DETAILED INFORMATION.
3. FOR COMMUNICATION CABLES USE ONLY 1-1.5 SQ. mm COPPER WIRE RATED MINIMUM 250V.
4. ----- = CABLING PROVIDED BY OTHERS.

THIS DRAWING AND SPECIFICATIONS HEREIN ARE THE PROPERTY OF SCHNEIDER ELECTRIC AND SHALL NOT BE COPIED, REPRODUCED OR USED IN WHOLE OR IN PART, AS THE BASIS FOR THE MANUFACTURE OR SALE OF ITEMS WITHOUT WRITTEN PERMISSION FROM SCHNEIDER ELECTRIC. THIS DRAWING IS BASED UPON LATEST AVAILABLE INFORMATION AND IS SUBJECT TO CHANGE WITHOUT NOTICE.



TITLE: SMART-UPS VT, PARALLEL CAPABLE
15kVA, 400/230VAC, 3Ø
w/ (4) BATTERY MODULES
SYSTEM CONTROL CONNECTION DIAGRAM

PROJECT: SUBMITTAL DRAWING SHEET: 9 OF 9

DWG NO: **SUVTP15KH4B4** REV. 2

DRAWN: C KRISHNA/S CUNHA	06FEB2015	PROJ ANGLE N/A
ENGINEER: D PETERSEN/A WARNER	10MAR2009	
APPROVED: C LARSEN/S WAGH/E SILVA	10MAR2009	