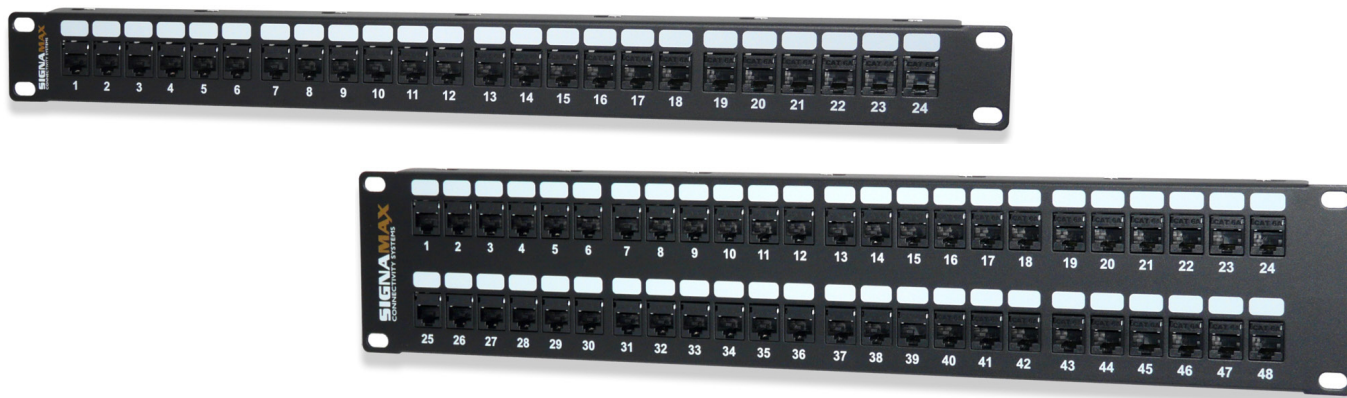


# Product Specifications

## Category 6 MT-Series Unscreened Patch Panels



### KEY FEATURES

- Exceeds ANSI/TIA-568-C.2 component performance specifications
- Supports TIA-568-C.2 category 6 100 meter channel performance
- Removable rear cable management bar
- Improved wire retention and ease of termination with rear 110 type contacts
- Slim profile for the highest density applications
- Cold-rolled steel construction for maximum strength and durability
- Easy-to-read T568A/B wiring scheme color-coded label

The Signamax Category 6 MT-Series Unscreened Patch Panels are designed to offer a complete panel and jack option. The MT-series includes the option of a 24, 48, or 72 port panel, black snap in keystone jacks, and a cable management bar. This unique design allows easy termination and greater flexibility for future adds, moves or changes, giving installers the perfect cost effective solution for Category 6 applications.

The patch panels rolled-edge steel construction eliminates panel flex, and in lieu of fixed termination, a standard single-position 110 termination tool or a specialized Signamax multi-pair tool can be used. For easy circuit identification, each port designation features a labeling area with a reference number. The keystone jacks are rated for a minimum of 750 plug insertions providing for the highest level of system reliability.

### ORDERING INFORMATION

PART NO.	DESCRIPTION
24458-C6C	24-Port Category 6 MT-Series Patch Panel 1.75" H
48458-C6C	48-Port Category 6 MT-Series Patch Panel, 3.50" H
72458-C6C	72-Port Category 6 MT-Series Patch Panel, 3.50" H

Panels are supplied as a kit, which includes the panel, black MT-Series unscreened jacks per port count, a cable management bar per RMU, and cable ties.

For panels with other keystone jack color options contact Customer Service.

## SPECIFICATIONS

### TRANSMISSION PERFORMANCE

ANSI/TIA-568-C.2: exceeds category 6 (1-250 MHz) component specifications

### TRANSMISSION MEDIA

Unscreened twisted pair (U/UTP)

### JACK TYPE

8p8c (8-position, 8-contact) "RJ45" type

### WIRING SCHEME (See Figure 1)

ANSI/TIA-568-C.2: T568A & T568B

ISO/IEC 11801 2nd Ed.: 8-position pin/pair assignment (1-2/3-6/4-5/7-8)

### WIRE GAUGE

22 to 24 AWG (0.64 to 0.51 mm)

### ELECTRICAL

**Insulation Resistance:** Min 500 MOhm @ 100 V<sub>dc</sub>

**Dielectric Withstanding Voltage:**

1,000 V<sub>dca</sub> peak contact-to-contact @ 60 Hz for 1 min

**Spring Wire Contact Resistance:** Max 20 mOhm

**IDC Contact Resistance:** Max 2.5 mOhm

**Current Rating:** See Figure 2

### CONSTRUCTION

**Panel:**

**Front:** Steel with corrosive resistant black finish

**Rear:** Steel

**Cable management bar:** Thermoplastic with steel brackets

**Jack:**

**Housing:** High-impact thermoplastic, UL94V-0 fire-retardant

**Contacts:** Phosphor bronze alloy plated with min 50 µin of gold over 70 µin to 100 µin of nickel plating

**IDC:** 110 type, phosphor bronze alloy with 100-µin 100% tin alloy

### MECHANICAL

**Total Contact Force:** Min 800 g for 8 wire leads with FCC compliant 8p8c plug

**Retention:** 50 N (11 lbf) for 60 ± 5 s

**Mating Cycle Life:** Min 750 cycles with FCC compliant 8p8c plug

### MOUNTING DIMENSIONS:

**Panel:** 19-in rack mountable

**Depth:**

Management Bar Installed: 6.0" (153 mm)

Management Bar Uninstalled: 1.5" (38 mm)

**Height:**

24458-C6C: 1 RMU (1.75" (44.45 mm))

48458-C6C: 2 RMU (3.50" (88.90 mm))

72458-C6C: 2 RMU (3.50" (88.90 mm))

**Jack:** 1.21" D x 0.67" W x 0.76" H (30.8 mm x 16.9 mm x 19.3 mm)

### ENVIRONMENTAL CONDITIONS

**Operating Temperature:** 14 °F to 140 °F (-10 °C to 60 °C)

**Storage Temperature:** -40 °F to 158 °F (-40 °C to 70 °C)

**Operating RH:** 93% Max (non-condensing)

### COMPLIANCE

ANSI/TIA-568-C.2, IEEE 802.3 ab, FCC Part 68 Subpart F, UL 94V-0, UL 1863, IEC 60603-7

### APPLICATIONS

X.21, V.11, S0, ISDN, CSMA/CD 10BASE-T, 100BASE-TX, 100BASE-T4, 100BASE-T2, 1000BASE-T, 10GBASE-T, TR 4/16/100, 100BASE-VG, ATM LAN 25/51/155, TP-PMD

### WARRANTY

5 - Year Limited Component

Figure 1: Wiring Schemes

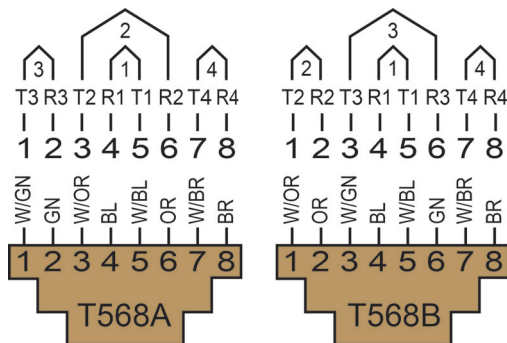
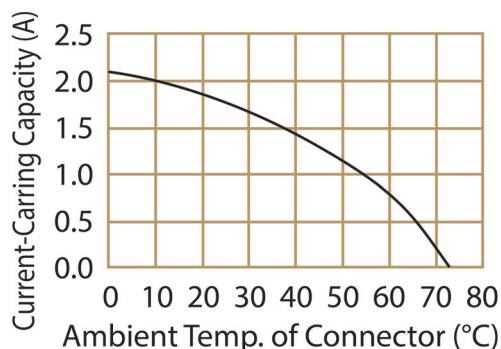


Figure 2: Current Rating



### Detailed Back View

Cable management bar snaps into the back of the panel.



Grounding lug for attaching 6 AWG (4.5 mm) ground conductor.