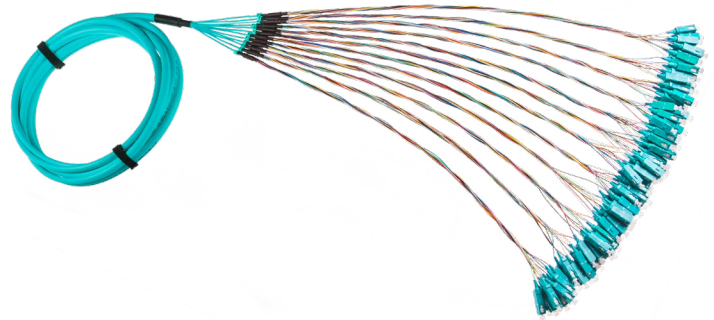


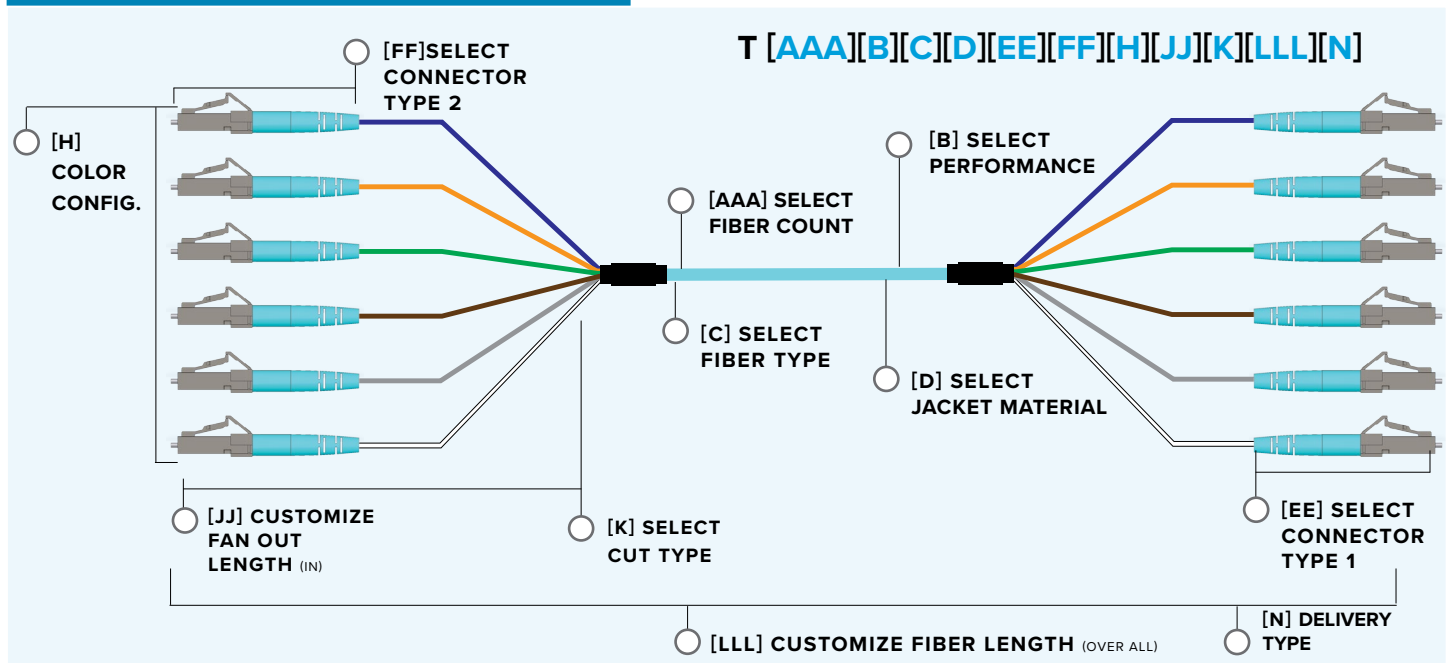
Fiber Optic Trunk Cables

KEY FEATURES

- 100% factory tested for insertion and return loss
- Made in the USA with Corning® Clear Curve™ Bend Insensitive fiber glass & SENKO LC , SC , or CS connectors
- Integrated with CS connectors for the CORE configurations designed for 200/400 GbE applications
- Up to 144 fibers with multiple break options including staggered trunks
- Available for the SIGNAMAX 5-day Fiber Program
- Insertion loss:
SM (LC) Low Loss: Typical 0.05 dB, Max 0.15 dB
MM (LC) Low Loss: Typical 0.05 dB, Max 0.15 dB

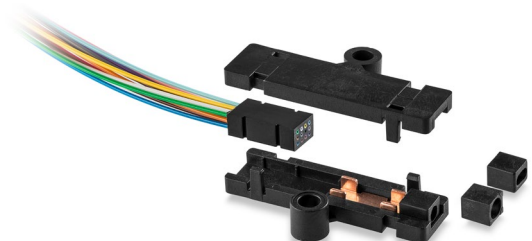


CONFIGURATION OPTIONS



Fan Out Optical Fiber Kit

- Converts loose tube fibers into tight buffered fibers ready for direct termination
- Color-coded tubes allow easy identification & requires no proprietary tools or epoxy



PART NO.	DESCRIPTION
FOK-90M0625	6-Fiber 900 μm Fan Out Kit, 25"
FOK-90M1225	12-Fiber 900 μm Fan Out Kit, 25"

Product Specifications

Fiber Optic Trunk Cables



T [AAA][B][C][D][EE][FF][H][JJ][K][LLL][N]

ORDERING CONFIGURATION

FIBER COUNT [AAA]	PERFORMANCE [B]	CONNECTOR 1 [EE]	COLOR [H]	STAGGERED [K]
006	S: Standard	A1: LC Simplex (900µm)	T: TIA Standard	N: None
008	L: Low Loss	A2: LC / APC Simplex (900µm)	B: Blue	L: Left
012		A3: SC Simplex (900µm)	O: Orange	R: Right
016	FIBER TYPE [C]	A4: SC / APC Simplex (900µm)	G: Green	
024	3: OM3	B1: LC Duplex (2mm)	W: Brown	²LENGTH (FT) [LLL]
032	4: OM4	B2: LC / APC Duplex (2mm)	R: Red	XXX
048	5: OM5	B3: SC Duplex (2mm)	K: Black	
072	9: OS2	B4: SC / APC Duplex (2mm)	Y: Yellow	DELIVERY [N]
096		B5: CS Duplex (2mm)	V: Violet	S: Standard
144	JACKET [D]	B6: CS / APC Duplex (2mm)		E: 5-Day
	R: OFNR	CONNECTOR 2 [FF]	FAN OUT (IN) [JJ]	
	P: OFNP	A1: LC Simplex (900µm)	XX	
	L: LSZH	A2: LC / APC Simplex (900µm)		
		A3: SC Simplex (900µm)		
		A4: SC / APC Simplex (900µm)		
		B1: LC Duplex (2mm)		
		B2: LC / APC Duplex (2mm)		
		B3: SC Duplex (2mm)		
		B4: SC / APC Duplex (2mm)		
		B5: CS Duplex (2mm)		
		B6: CS / APC Duplex (2mm)		
		00: Blunt End		

PART NUMBER EXAMPLE :

T024L9PB1B1T16N150E

The part number represents a 24 fiber Low Loss SM assembly with a plenum jacket and LC to LC 2 mm connectors with a 16 in break; configured to be 150 feet in length and delivered in 5 days.

1. Additional jacket materials & connectors available by request, contact customer service.

2. Pulling eye included on all assemblies over 50 ft in length. Lengths over 100 ft are packaged on reels.

*Need more customization, contact tech support for a consult.

SPECIFICATIONS

TRANSMISSION PERFORMANCE

OS2 (9/125 µm):

Max. Attenuation [dB/km] 0.5/0.4

OM3 (50/125 µm):

Max. Attenuation [dB/km] 3.5/1.5; Bandwidth [MHz.km] 2,000 @850nm

OM4 (LOMMF):

Max. Attenuation [dB/km] 3.0/1.0; Bandwidth [MHz.km] 4,700 @850nm

OM5 (WBMMF):

Max. Attenuation [dB/km] 2.5/0.8; Bandwidth [MHz.km] 3,500 @500nm

Return loss:

UPC: ≤ -50 dB

APC: ≤ -60 dB

Insertion loss:

SM/UPC Low Loss: 0.05 dB Typical, 0.15 dB Max

SM/APC Low Loss: 0.07 dB Typical, 0.15 dB Max

SM/UPC Standard: (LC) 0.08 dB Typical, 0.20 dB Max; (SC) 0.12 dB Typical, 0.30 dB Max

SM/APC Standard: 0.10 dB Typical, 0.25 dB Max

MM/UPC Low Loss: 0.10 dB Typical, 0.20 dB Max

MM/UPC Standard: (LC) 0.12 dB Typical, 0.30 dB Max; (SC) 0.15 dB Typical, 0.30 dB Max

CONSTRUCTION

Cable: 900 µm Buffered white simplex or 2 mm Jacketed duplex

Outer Jacket: Thermoplastic (OFNR-rated); Flame retardant PVC (OFNP)

Strain Relief: Thermoplastic

MECHANICAL

Connector Ferrule: ceramic

End-Face Radius of Curvature: 10 mm (0.39 in) < R < 30 mm (1.18 in)

Apex Offset: < 50 µm

ENVIRONMENTAL CONDITIONS

Operating Temperature: 32 to 158°F (0 to 70°C)

Storage Temperature: -40 to 158°F (-40 to 70°C)

Operating RH: 95% (non-condensing)

COMPLIANCE

Tested per: ANSI/EIA-455-171 Method D3 & Method D1, IEC 61280-4-1

ANSI/TIA-568-C.3, ISO/IEC 11801 2nd Ed., IEC 61755-3-31/GRADE B, CENELEC EN 50173, UL94V-0, Flame Rating: NFPA262 (Plenum), UL1666 (Riser), UL1658 (FT4)

WARRANTY

5 - Year Limited Component