

# ALTV2432UL3 Series

CCTV Power Supplies with  
Factory installed 3-wire line cord

## Models Include:

### ALTV2432300UL3

- 24VAC @ 12.5A (300VA)  
or 28VAC @ 10A (280VA).
- Thirty-two (32) Fuse Protected Outputs.

### ALTV2432600UL3

- 24VAC @ 25A (600VA)  
or 28VAC @ 20A (560VA).
- Thirty-two (32) Fuse Protected Outputs.

### ALTV2432300ULCB3

- 24VAC @ 12.5A (300VA)  
or 28VAC @ 10A (280VA).
- Thirty-two (32) PTC Protected Outputs.

### ALTV2432600ULCB3

- 24VAC @ 25A (600VA)  
or 28VAC @ 20A (560VA).
- Thirty-two (32) PTC Protected Outputs.

## Installation Guide



Rev. 040506

**More than just power.™**



Installing Company: \_\_\_\_\_ Service Rep. Name: \_\_\_\_\_

Address: \_\_\_\_\_ Phone #: \_\_\_\_\_

## Overview:

Altronix ALTV2432UL3 Series CCTV Power Supplies provide 24VAC or 28VAC distributed via thirty-two (32) fuse or PTC protected outputs for powering CCTV cameras, heaters and other video accessories.

### Thirty-Two (32) Output ALTV2432UL3 Reference Chart:

Altronix Model Number	Output Voltage	Total Output Current (Power)	Number of Outputs	PTC Protected auto-resettable Outputs (Class 2 Rated power-limited for Dry locations, Class 3 for Wet locations)	Fuse Protected Class 1 Outputs	Individual Output Current (max per output, not to exceed total output current)	Fuse Ratings	115VAC 60Hz Input Current	Agency Listings
ALTV2432300UL3	24VAC	12.5A	32	-	✓	3.5A	3.5A	2.7A	 
	28VAC	10A							
ALTV2432300ULCB3	24VAC	12.5A	32	✓	-	2.5A	-	2.7A	
	28VAC	10A							
ALTV2432600UL3	24VAC	25A	32	-	✓	3.5A	3.5A	5.4A	
	28VAC	20A							
ALTV2432600ULCB3	24VAC	25A	32	✓	-	2.5A	-	5.4A	
	28VAC	20A							

## Specifications:

### Agency Listings:

- UL Listed for Commercial CCTV Equipment (UL 2044).  
CUL Listed - CSA Standard C22.2 No.1-98, Audio, Video and Similar Equipment.
- CE European Conformity.

### Input:

- 115VAC, 50/60Hz.

### Output:

- Thirty-two (32) fuse or PTC protected outputs.
- 24VAC or 28VAC output
- Outputs are rated @ 3.5A (fused) or 2.5A (PTC).
- Surge suppression.

### Features:

- AC power LED indicator.
- Illuminated power disconnect circuit breaker with manual reset.
- Unit maintains camera synchronization.
- Ease of installation saves time and eliminates costly labor.
- Spare fuses included (on fuse protected models).
- Factory installed 3-wire line cord.

### Enclosure Dimensions (H x W x D):

13.5" x 13" x 3.25"  
(342.9mm x 330.2mm x 82.6mm).

## Installation Instructions:

Wiring methods shall be in accordance with the National Electrical Code/NFPA 70/NFPA 72/ANSI, and with all local codes and authorities having jurisdiction. Product is intended for indoor use only.

1. Mount unit in the desired location. Mark and predrill holes in the wall to line up with the top two keyholes in the enclosure. Install two upper fasteners and screws in the wall with the screw heads protruding. Place the enclosure's upper keyholes over the two upper screws, level and secure. Mark the position of the lower two holes. Remove the enclosure. Drill the lower holes and install the three fasteners. Place the enclosure's upper keyholes over the two upper screws. Install the two lower screws and make sure to tighten all screws (*Enclosure Dimensions, pg. 8*). Secure enclosure to earth ground.
2. Turn OFF main switch on the unit (*Figs. 1 - 2, pgs. 4 - 5*).
3. All units are factory set for 24VAC operation.  
For 28VAC operation (where available) adjust unit prior to mounting and applying power as follows:  
Change the wire position so that the black wire [28V] is connected to the terminal marked [P] and the yellow wire [24V] is connected to the terminal marked [S].
4. Plug-in 3-wire line cord (*Figs. 1 - 2, pgs. 4 - 5*).

Keep power-limited (PTC protected outputs only) wiring separate from non power-limited wiring. Minimum 0.25" spacing must be provided. Use separate knockouts.

5. Measure output voltage before connecting devices. This helps avoid potential damage.

**CAUTION: Determine the maximum operating voltage of the equipment being powered before adjusting the output voltage.**

6. Connect devices to terminals marked [1P - 1N] through [16P - 16N] on PD16W/PD16WCB board (Figs. 1 - 2, pgs. 4 - 5), carefully observing polarity. Terminals marked [1P - 16P] are of the same polarity.
7. Turn main switch on unit to the ON (RESET) position (Figs. 1 - 2, pgs. 4 - 5).
8. Green LED(s) will illuminate when unit is powered.
9. Upon completion of the wiring secure enclosure door with screws (supplied).

**Caution: Equipment to be installed/serviced by authorized/trained personnel only. Shut branch circuit power before installing/servicing equipment.**

**WARNING: To reduce the risk of fire or electric shock, do not expose the unit to rain or moisture. This installation should be made by qualified service personnel and should conform to the National Electrical Code and all local codes. Use 75°C or higher rated UL insulated wiring for connecting the unit to the mains. Replace fuses with the same type and rating (refer to Thirty-Two (32) Output ALTV2432UL3 Reference Chart, pg. 2).**

## Terminal Identification:

### PD16W/PD16WCB - Distribution Module

1P - 16P	AC output.
1N - 16N	AC output.



The lightning flash with arrowhead symbol within an equilateral triangle is intended to alert the user to the presence of an insulated DANGEROUS VOLTAGE within the product's enclosure that may be of sufficient magnitude to constitute an electric shock.



The exclamation point within an equilateral triangle is intended to alert the user to the presence of important operating and maintenance (servicing) instructions in the literature accompanying the appliance.



**CAUTION**  
**RISK OF ELECTRIC SHOCK**  
**DO NOT OPEN**



**CAUTION:** To reduce the risk of electric shock do not open enclosure. There are no user serviceable parts inside. Refer servicing to qualified service personnel.

Fig. 1 - ALTV2432300UL3, ALTV2432300ULCB3

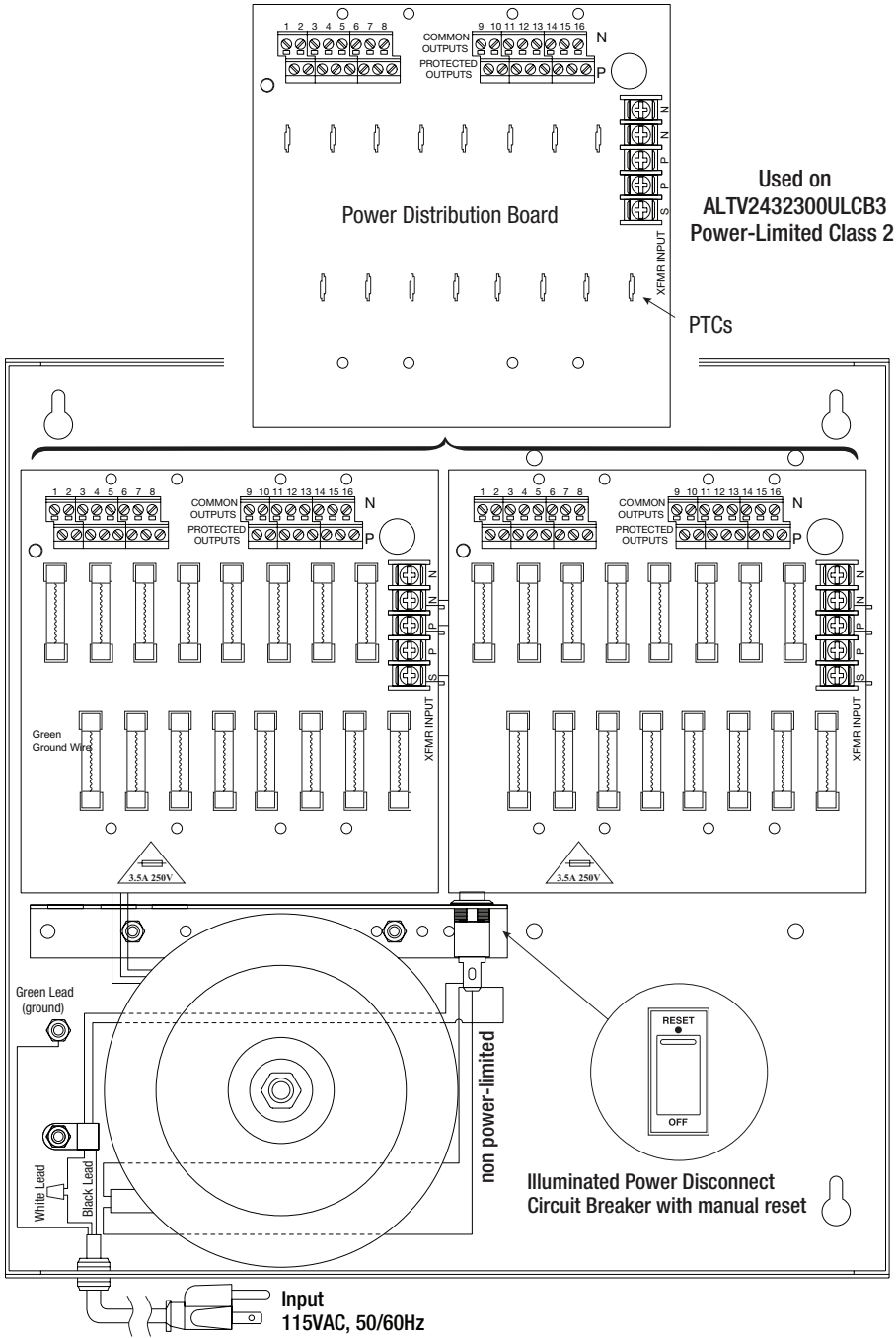
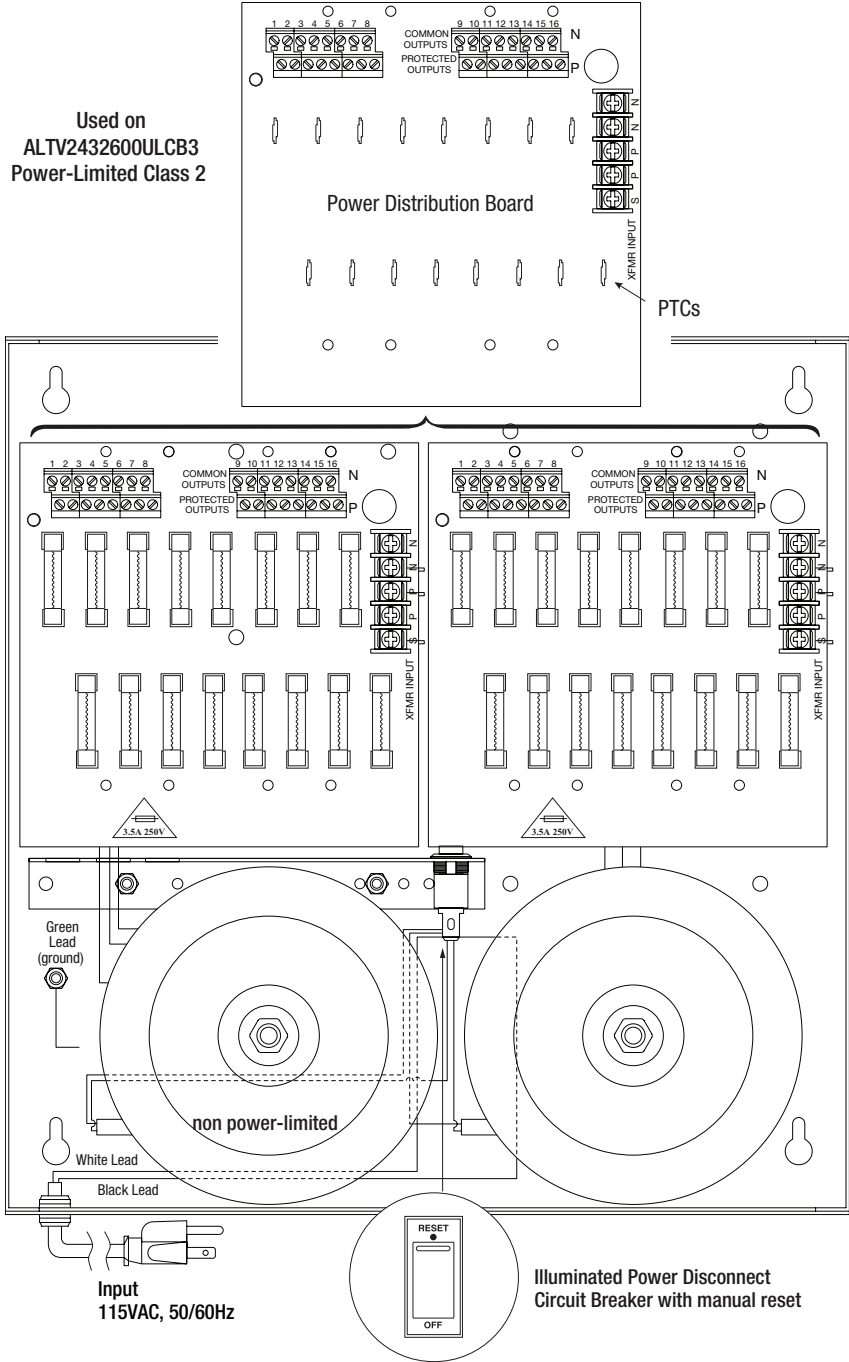


Fig. 2 - ALTV2432600UL, ALTV2432600ULCB

Used on  
ALTV2432600ULCB3  
Power-Limited Class 2

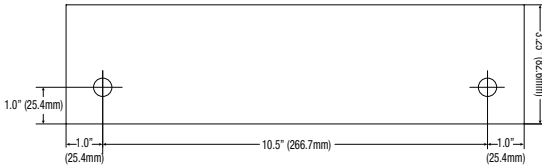
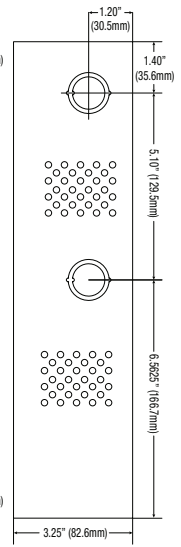
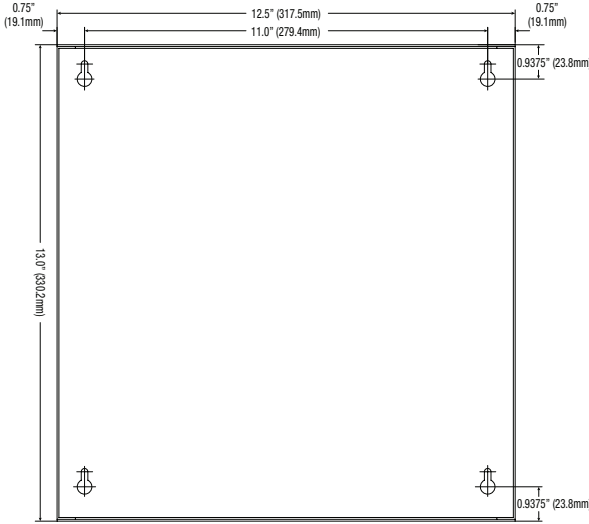
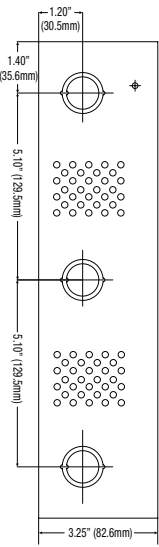
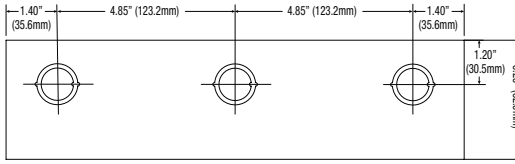


## Notes:

## Notes:

# Enclosure Dimensions (H x W x D):

13.5" x 13" x 3.25" (342.9mm x 330.2mm x 82.6mm)



Altronix is not responsible for any typographical errors.

140 58th Street, Brooklyn, New York 11220 USA | phone: 718-567-8181 | fax: 718-567-9056  
 website: [www.altronix.com](http://www.altronix.com) | e-mail: [info@altronix.com](mailto:info@altronix.com) | Lifetime Warranty  
 IIALTV2432UL3 Series L03U

