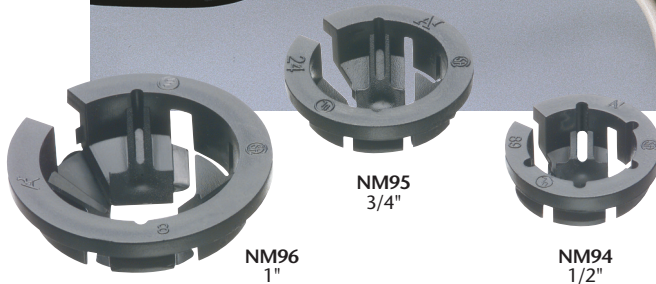


Black Button™ NM Cable Connectors

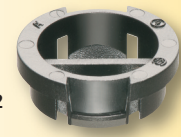
Made in USA 

NEW!
more on
reverse

Non-metallic • Easy, Push-in Installation



NEW!



Save money with Arlington's non-metallic **Black Button™** NM cable connectors. They're the *lowest cost* NM cable connectors on the market, and the fastest to install! Simply push the connector into the knockout, and you're done.

Listed for single or multiple cables, Arlington's Black Button connectors offer smooth, easy cable insertion **into a single opening** while exceeding UL and CSA pullout requirements.

- Removable, reusable
- 1/2", 3/4" and 1" trade sizes
- UL/CSA Listed

Our new 1/2" NM942 holds one or two cables, in **two separate openings**:

- One or two 12/2
- One or two 14/2, or one 12/2 and one 14/2

Use a screwdriver to remove NM942 from box. It's reusable!

 
Arlington

1 Stauffer Industrial Park
Scranton, PA 18517
800/233.4717
Fax 570/562.0646
www.aifittings.com

Lowest Cost NM Cable Connector • Easy, Push-in Installation

- Listed for one or two cables
- Easy installation
- Smooth, easy cable insertion
- Secure hold on cable – exceeds UL pullout tests

For multiple cable installations:
Insert **TWO** cables together or individually into NM94, NM95 or NM96. Add a second cable without removing the first.



1 Push the NM cable connector into the knockout with light finger pressure.



2 Install one or two cables, fast! Push the NM cable(s) into the connector to the desired length.

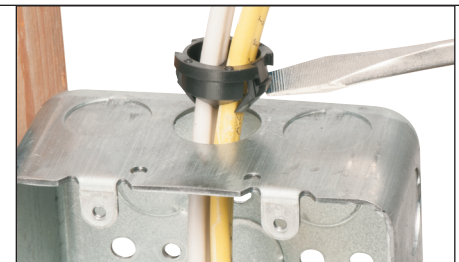
| CATALOG NUMBER | UPC/DCI/NAED MFG #01 8997 | DESCRIPTION/SIZE NM Cable Connector with SINGLE opening | KO SIZE | CABLE RANGES | UNIT PKG | STD PKG |
|----------------|---------------------------|---|---------|--|----------|---------|
| NM94 | 05488 | 3/8" | 1/2" | One 12/2 to 10/2 | 250 | 1000 |
| NM940 | 72156 | 3/8" | 1/2" | One 14/2/2 Two 14/2 to Two 10/2 Two 14/3 to Two 12/3 One 14/2 and One 12/2 One 14/2 and One 10/2 One 12/2 and One 10/2 One 14/3 and One 12/3 | 100 | 1000 |
| NM95 | 10956 | 3/4" | 3/4" | One 14/2 to 6/2 One 14/3 to 6/3 One 14/2/2 Two 14/2 to Two 10/2 Two 14/3 to Two 10/3 One 14/2 and One 12/2 One 14/2 and One 10/2 One 12/2 and One 10/2 One 14/3 and One 12/3 | 50 | 500 |
| NM96 | 72158 | 1" | 1" | One 4/3 to 8/3 One 6/2 to 4/2 | 25 | 250 |



1 Push connector into KO with light finger pressure.



2 Insert cable(s) into individual openings.



3 To remove from KO...Slip screwdriver under connector and twist.



Arlington
1 Stauffer Industrial Park
Scranton, PA 18517
800/233.4717
Fax 570/562.0646
www.aifittings.com

| CATALOG NUMBER | UPC/DCI/NAED MFG #01 8997 | DESCRIPTION/SIZE NM Cable Connector with TWO individual openings | KO SIZE | CABLE RANGES | UNIT PKG | STD PKG |
|----------------|---------------------------|--|---------|--|----------|---------|
| NM942 | 04281 | 3/8" | 1/2" | One or Two 14/2 One or Two 12/2 One 14/2 and One 12/2 One or Two 10/2 | 250 | 1000 |



NEW!
NM942
1/2"

Distributed by