

Large Flange Listed Box Extenders

Made in USA 

NEW!
Larger flange

THE Answer to Set Back Electrical Boxes – Now in 3 and 4-Gang!

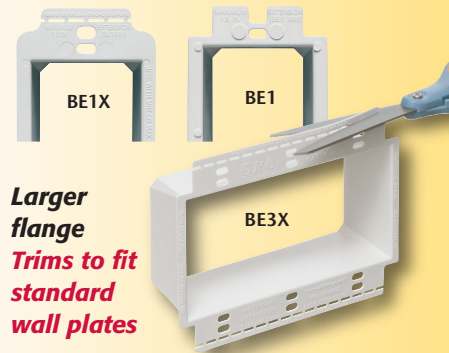


SAME COST as our 'Regular Flange' box extenders!

Arlington's non-conductive box extenders extend set back metal or non-metallic electrical boxes up to 1-1/2 inches, the easy way!

They work with any single gang device and most steel and non-metallic outlet boxes, providing a level, fully supported wiring device that's flush with the wall surface. In steel boxes they prevent arcing and shorting by creating a barrier between the box and device screws.

Now available in three- or four-gang, our newest box extenders have a slightly larger flange that provides extra device support when the wall opening is miscut or oversized. They accommodate midi or jumbo cover plates – and they're trimmable along the perforated flange for use with standard plates. Best of all they **cost the same as our 'regular' flange box extenders.** If you normally use a midi plate these are the box extenders for you!



Larger flange
Trims to fit standard wall plates

- Complies with NEC 2017, article 314.20 for set back boxes
- 2-hour fire rating



Larger perforated flange for better device support...



Catalog Number	UPC/DEI/NAED Mfg. #018997	Description	Std Pkg
BE1X	40171	Single-gang with larger flange	25
BE2X	48973	Two-gang with larger flange	25
NEW! BE3X	48974	Three-gang with larger flange	10
NEW! BE4X	48975	Four-gang with larger flange	10

NEW!

Works in handy boxes and 4" square electrical boxes with plaster rings for a single switch or receptacle. Functions with all standard devices, switches and GFCIs.



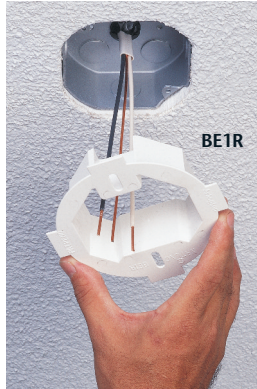
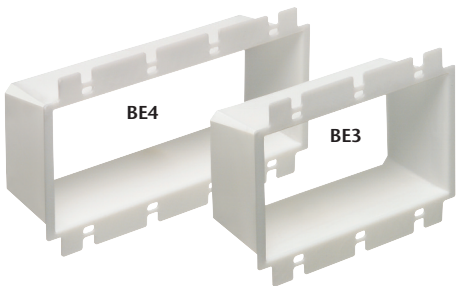
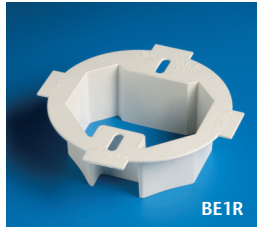
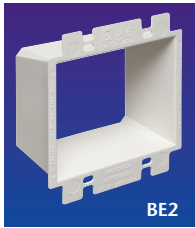
Arlington®

1 Stauffer Industrial Park
Scranton, PA 18517
800/233.4717 • Fax 570/562.0646
www.aifittings.com

Patented/Additional patents pending

Regular Size Flange Listed Box Extenders

Extend set back metal or non-metallic electrical boxes up to 1-1/2"

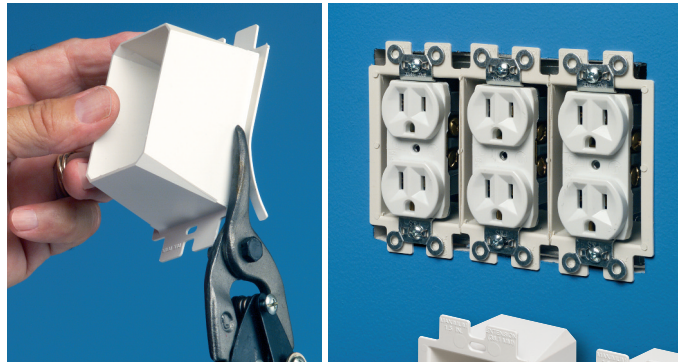


Catalog Number	UPC/DEI/NAED Mfg. #018997	Description 'REGULAR' FLANGE BOX EXTENDERS	Std Pkg
BE1	40160	Single-gang	25
BE2	48960	Two-gang	25
BE3	48967	Three-gang	10
BE4	48968	Four-gang	10
Works in handy boxes and 4" square electrical boxes with plaster rings for a single switch or receptacle. Functions with all standard devices, switches and GFCIs.			
BE1R	40160	Fits 3-1/2" and 4" round or octagonal ceiling boxes. Trimmable for shallow boxes or obstructions	25

Made in USA 

No three or four-gang Box Extenders on the truck? No problem!

BE1 Single gang box extenders are trimmable for use in multiple boxes.



LEAVE ON
outside flange

CUT THE FLANGES OFF
the inside box extender(s)

LEAVE ON
outside flange



Arlington®

1 Stauffer Industrial Park
Scranton, PA 18517
800/233.4717 • Fax 570/562.0646
www.aifittings.com

Distributed by

Patented/
Additional patents pending