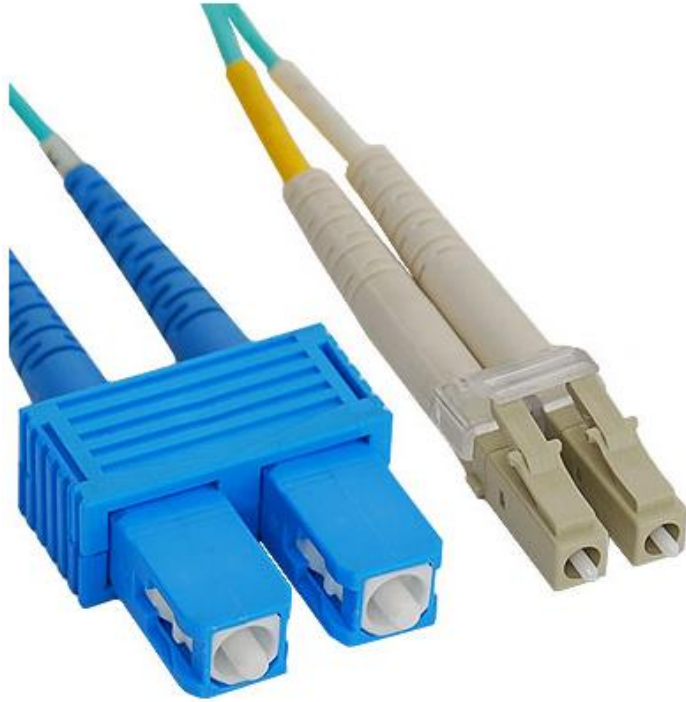


LC-SC 10G 50/125 μ m OM3 MM Duplex Fiber Optic Jumper



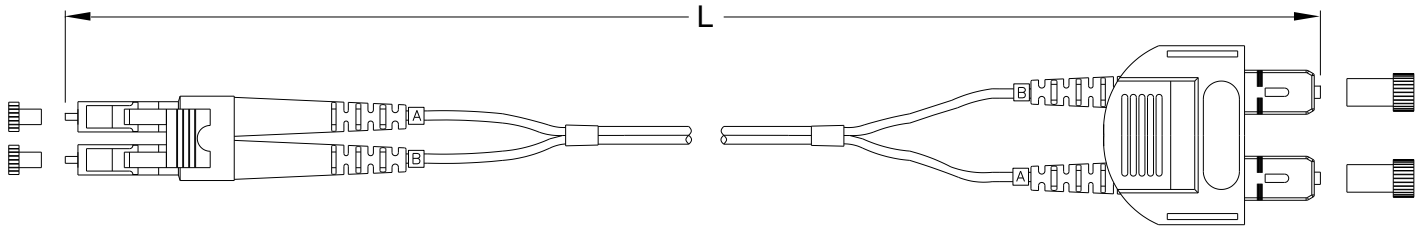
Package Includes:

- A. LC-SC 10G 50/125 μ m OM3 MM Duplex Fiber Jumper, **1 Piece**
- B. Test Results Label, **1 Piece**

Features and Benefits

- Made from OFNR riser rated cables, exceeding industry requirements
- Laser optimized fiber optic cable designed for 10 GHz applications
- Made with ClearCurve*, Bend-insensitive multimode fiber (BIMMF)
- Used with ICC fiber optic products
- Available in 1, 2, 3, 5, 7, and 10 meters
- Dust Cap Included
- Test results included

ClearCurve is a registered trademark of Corning



NOTE: UNLESS OTHERWISE SPECIFIED

1. Cable:

- A. Color: Aqua
- B. Fiber Counts: 2 Fiber Zipcord
- C. Fiber Type: Laser Optimized MM 50/125µm
- D. Attenuation: 2.3/0.6 dB/km @ 850/1300 nm
- E. Bandwidth: 2000 MHz.km EMB @ 850 nm
- F. Cable Data:

- Cable diameter: .079 in (2.0mm)
- Weight: 12 lbs./kft
- Bend radius: 1.2" MIN
- Loading: 135 lbs. MAX
- Impact cycle: 1500

ITEM NUMBER	L (LENGTH)
ICFOJ2G701	1 METER ± 10 CM
ICFOJ2G702	2 METER ± 10 CM
ICFOJ2G703	3 METER ± 10 CM
ICFOJ2G705	5 METER ± 10 CM
ICFOJ2G707	7 METER ± 10 CM
ICFOJ2G710	10 METER ± 10 CM

2. SC Connector:

- A. Ferrule: Zirconia
- B. Insertion Loss: 0.2 dB Typical, 0.3 dB MAX
- C. Reflection: N/A

3. LC Connector:

- A. Ferrule: Zirconia
- B. Insertion Loss: 0.2 dB Typical, 0.3 dB MAX
- C. Reflection: N/A

4. Compliance:

- A. ANSI/TIA-568-C.3

5. Length: XX: 01, 02, 03, 05, 07, & 10