

NEW
more on
reverse

TV BOX™ Recessed Double-Gang Electrical Box

for Close-to-the-wall Mounting of LCD and Plasma TVs



Arlington's recessed TV BOX™ for new or old work allows LCD and plasma TVs to be placed flush against the wall.

Its double-gang, combo box design allows you to install two duplex (power) receptacles – or you can use the box separator to install one low voltage device and one power duplex receptacle. There are also two additional built-in mounts for low voltage, data/media connections like speakers, satellite TV, surround-sound, etc.

The 13" wide, non-metallic TV BOX mounts securely between 16" on center studs.

The box is recessed, so plugs don't extend past the wall. You can mount TVs flush or push furniture closer to the wall.

- Textured, paintable trim plate covers edges of cut drywall
- Positioning tabs for 1/2" wall thickness assure accurate placement of box on stud
- Horizontal or vertical mounting
- cULus Listed



Recessed TV BOX™

Mounting Bracket

LCD TV



Catalog Number	UPC/DEI/NAED Mfg. #018997	Description TV Box™	Unit/Std Pkg
TVB613	09360	13" wide recessed double-gang device box w/ two built-in mounts for low voltage installations	1



TV613 includes recessed TV Box w/ trim plate, low voltage separator, NM cable connector and installation screws.

Patented/Other patents pending

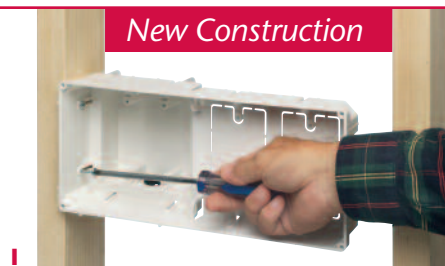


1 Stauffer Industrial Park
Scranton, PA 18517
800/233.4717
Fax 570/562.0646
www.aifittings.com

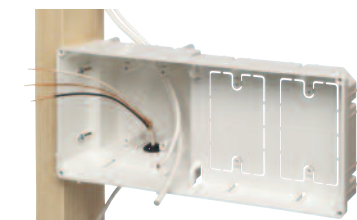
TV Box™ Recessed Power & Low Voltage Electrical Box

Plugs stay in the box - TV mounts flush against the wall

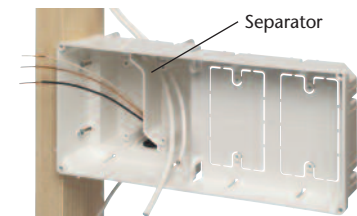
New Construction



1 Mount box section to stud through the slotted holes in box. Use minimum of (2) #6 x 1-5/8" wood screws. Positioning tabs place box properly for 1/2" finish wall thickness.



2 Install NM cable connector. Pull power and low voltage cables.



3 Install low voltage separator if using low voltage in double-gang box.



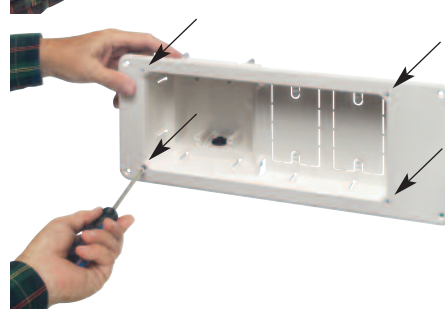
4 Install power and low voltage wiring devices.

A After drywall (or other) is installed, attach trim plate to box using (4) #8 x 3/4" screws*. Secure trim plate to wall with (4) #8 x 1-1/2" screws*. *Screws supplied. See 1 and 4 at right.

Arlington

1 Stauffer Industrial Park
Scranton, PA 18517
800/233.4717
Fax 570/562.0646
www.aifittings.com

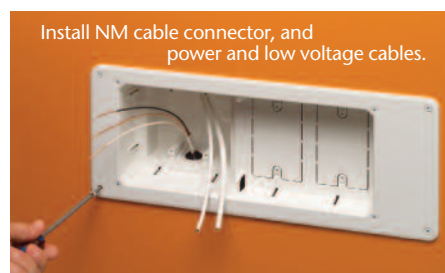
Old Work



1 Attach trim plate to box section with (4) #8 x 3/4" (supplied) screws through these holes.



2 Cut 6" x 13-1/4" hole next to stud.



3 Mount box (horizontal) between 16" o.c. studs through remaining (4) holes in trim plate. Use (4) #8 x 1-1/2" (supplied) screws.



4 Install low voltage separator if using low voltage in double-gang box.



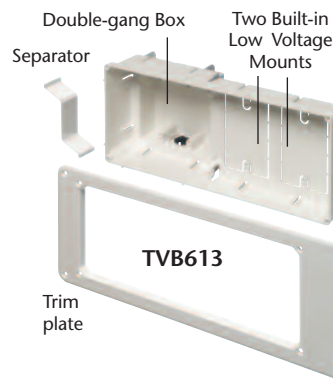
5 Install power and low voltage wiring devices.



6 Complete wiring connections to all power and low voltage devices.



Finished installation with wires plugged in to recessed TV Box



Note: For Vertical mounting to stud use minimum (2) #6 x 1-5/8 (not included) through slotted holes.

Distributed by