

# 8 x 10 TV BOX™

Made in USA 



*Installation Versatility • Perfect for Home Theater Installations*



**NEW!**

TVBU810  
8X10 TV BOX™

**Lots of space inside for multiple low voltage connections...  
Brackets for a neater installation**

Arlington's TVBU810 TV Box™ delivers the ultimate in versatility for installing wall-mounted TVs in new work or retrofit projects. There's more room in the box for wires. And, you can install it horizontally or vertically to ensure proper positioning of low voltage connections behind the TV.

Available with a non-metallic or steel box, TVBU810 is ideal for home theater systems where multiple connections are needed for sound systems, satellite TV, cable TV, DVRs, and more.

- Accepts standard-style plates with receptacles and decorator-style devices with plates and Arlington's SCOOP™ series entrance plates and hoods
- In **new work** box mounts to a stud; in **retrofit** mounting wing screws hold box secure in the wall
- 1-1/2" knockout for ENT or other low voltage wiring
- Optional cover available for unused boxes
- cULus Listed

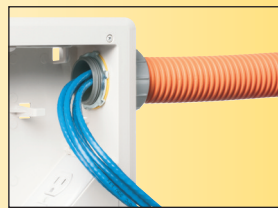


**Mounts to stud in NEW work**



**In RETROFIT mounting wing screws hold box secure in wall**

TVBU810  
(ENT installed in 1-1/2" knockout)



**Arlington**

1 Stauffer Industrial Park  
Scranton, PA 18517  
800/233.4717  
Fax 570/562.0646  
www.aifittings.com



Patent pending

# 8 x 10 TV BOX™

**NEW!**

Made in USA 

*Install Vertically or Horizontally in New Work or Retrofit*

## Easy installation in **New Work...**



Mount box to stud, using tabs for proper positioning.



Positioning tabs are set for 1/2" or 5/8" drywall.

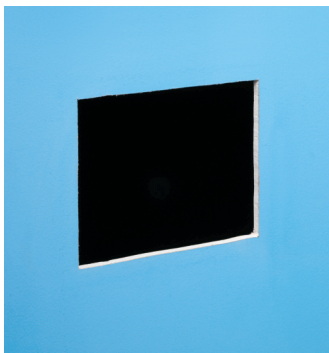


Attach trim plate with screws provided.



Tighten mounting wing screws to pull box securely against the wall.

## ...or **Retrofit**



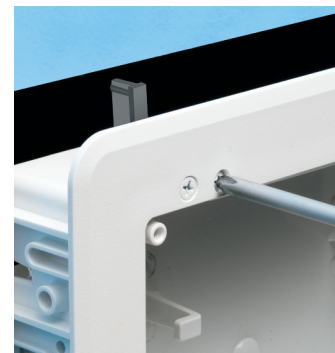
Determine placement of box. Cut opening in drywall.



Install trim plate on box. Pull wire. Insert assembly into opening.

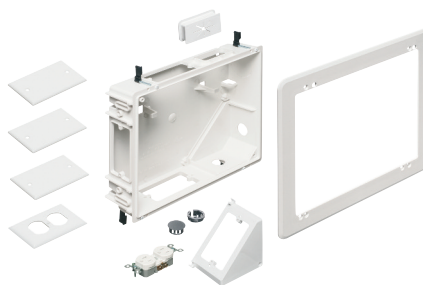


Pull cable. Tighten mounting wing screws to pull box securely against wall.



Close-up: Mounting wing screws

TVBU810



TVBU810 Components



TVB810C  
Cover on  
TVBU810

Catalog Number	UPC/DEI/NAED Mfg. #018997	Description 8x10 TV BOX™	Unit/Std Pkg
TVBU810	09758	Non-metallic power/low voltage box	1
TVBU810CC	13631	Non-metallic power/low voltage box Includes ground clip for Canada	1
TVBS810	09757	Steel power/low voltage box	1
Includes box, trim plate, duplex receptacle, line voltage box, wall plates, SCOOP™ cable entry device and knockout plugs for unused openings			
TVB810C	24193	Paintable Cover for TVBU810 and TVBS810	1/10

Distributed by

**Arlington**

1 Stauffer Industrial Park  
Scranton, PA 18517  
800/233.4717  
Fax 570/562.0646  
www.aifittings.com

View Video



Patent pending