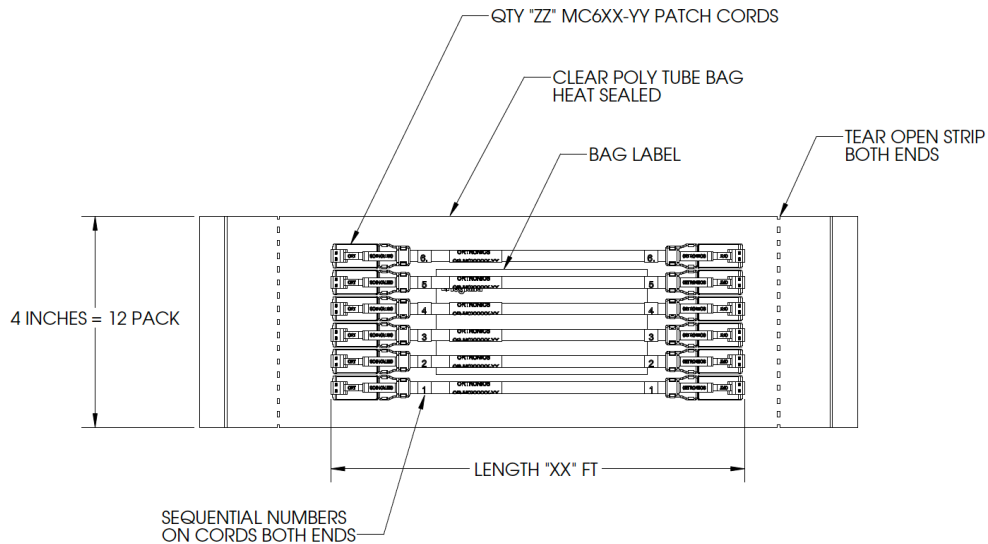


Clarity EZ Patch™ Flat Pack



OVERVIEW:

Clarity EZ Patch Flat Packs offer a quick and convenient way to introduce new cabling to a data network. Cord memory is no longer an issue, as packs are bagged with patch cords laying straight and flat, meaning the cords are ready to install neatly in a bundle, without any kinks or curves. Bulk packs save time and reduce waste on the job site compared to single cord bags. Perforation tear strips on from both ends, provides quick connectivity options and improves cable management during installation. Overall, the Flat Pack means faster installation, less packaging waste and no more zip or twist ties. Clarity EZ Patch Flat Packs deliver bulk packaged cords in patch panel quantities, 12-pack cords to be quickly and efficiently distributed from flat plastic packaging, ideal for patch panel applications.

FEATURES:

- **Certification:** TIA Component and Channel Compliant, with ETL Verification
- **Sustainable packaging:** Reduces installation time and packaging waste. No dealing with individual bags or zip ties.
- **No cord memory:** Packs are laid out flat in a bundle. Cords are ready to install in a clean bundle without any bends or kinks from packaging.
- **Plastic packaging:** Ideal for data center applications that do not allow cardboard.
- **Light weight design:** Easily transport multiple 12-packs by draping over the shoulder.
- **Easy tear perforation strips:** Tears at each end allow for quick connection and easy removal of bag from the bundle.
- **Cable management:** Bag can be used as a cord management mechanism to route a bundle through a vertical manager.

Clarity EZ Patch™ Flat Pack

CAT6:

PART NUMBER	DESCRIPTION	QTY PER BAG
EZFPM603Q12-XX	3ft EZ Patch Flat Pack CAT6	12
EZFPM605Q12-XX	5ft EZ Patch Flat Pack CAT6	12
EZFPM607Q12-XX	7ft EZ Patch Flat Pack CAT6	12
EZFPM609Q12-XX	9ft EZ Patch Flat Pack CAT6	12

NOTE: To order standard colors, replace XX suffix: 00 (Black), 02 (Red), 03 (Orange), 04 (Yellow), 05 (Green), 06 (Blue), 07 (Violet), 08 (Gray), 09 (White)

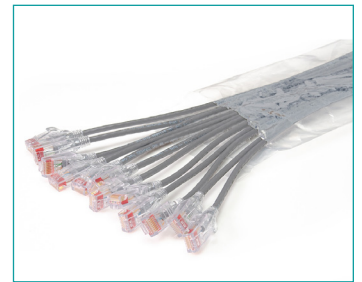


EZFPM603Q12-06

CAT6A:

PART NUMBER	DESCRIPTION	QTY PER BAG
EZFPM6A03Q12-XX	3ft EZ Patch Flat Pack CAT6A	12
EZFPM6A05Q12-XX	5ft EZ Patch Flat Pack CAT6A	12
EZFPM6A07Q12-XX	7ft EZ Patch Flat Pack CAT6A	12
EZFPM6A09Q12-XX	9ft EZ Patch Flat Pack CAT6A	12

NOTE: To order standard colors, replace XX suffix: 00 (Black), 02 (Red), 03 (Orange), 04 (Yellow), 05 (Green), 06 (Blue), 07 (Violet), 08 (Gray), 09 (White)



EZFPM6A03Q12-08

SPECIFICATIONS:

- **Cable Types:** Cat 6 & Cat6a
- **Connector Type End One:** RJ45
- **Connector Type End Two:** RJ45
- **Pair Count:** 4
- **Cat6 Wire Gauge:** 24AWG
- **Cat6a Wire Gauge:** 26AWG
- **Performance Categories:**
Cat6 & Cat6a component compliant
- **Product Series:** Clarity EZ Patch
- **Type:** Patch Cords and Cables
- **Installation Destination:**
Data Centers, Telecom Rooms,
and Building Networks

LISTING AGENCIES/

THIRD PARTY CERTIFICATIONS:

- **RoHS:** Yes

TECHNICAL INFORMATION:

- **Category Ratings:**
Cat6 & Cat6a component compliant
- **Performance Ratings:** Cat6 & Cat6a

BUY AMERICAN ACT COMPLIANCE:

- **Buy American Act Status:**
Trade Agreement Act Compliant