

**NEW**  
Fits 3/4" Knockout

# SNAP-TITE® Connectors for 1/2" Flex

No Tools • Saves Time! • Install in New or Old Work Boxes



Installation  
GF5075RASTG  
(with ground lug)

Arlington's new one-piece, screw-in **SNAP-TITE® connectors for flexible metal conduit** are designed for use in new or old work (installed) electrical boxes.

Quick and easy installation! **NO TOOLS...** To install in an *existing* box, pull the conduit through the 3/4" knockout. Screw the fitting into the cable, then snap the assembly into the box. That's it!

Our retrofit SNAP-TITE® connectors accommodate 1/2" reduced wall flexible metal conduit (RWFMC)

- **Super-secure installation**  
No pullout!
- **Fully assembled one-piece design**  
3/4" knockout with insulated throat, with or without ground lug.

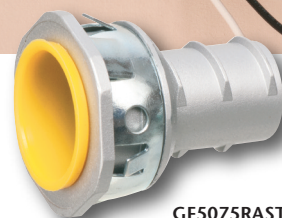
See reverse for more connectors for existing boxes – and new work!



1 Pull flex conduit through 3/4" knockout in installed box.



2 Screw connector into conduit. Snap assembly into box.



GF5075RAST  
(no ground lug)

Made in USA 



1 Stauffer Industrial Park  
Scranton, PA 18517  
**800/233.4717**  
**Fax 570/562.0646**  
**www.aifittings.com**

Catalog Number	UPC/DEI/NAED Mfg. #018997	Description	Unit/Std Pkg
GF5075RAST	22092	Insulated throat (NO ground lug)	25
GF5075RASTG	22094	insulated throat, WITH ground lug	25

Zinc die-cast with 3/4" knockout, spring steel SNAP-TITE clip

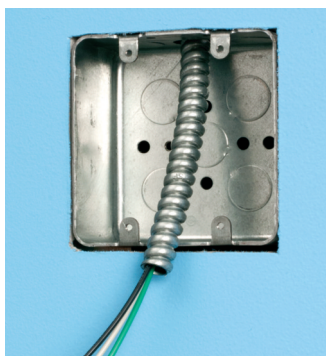
Patent pending Snap-Tite Flex 0316/15M

# MORE! for New Work and Retrofit

## SNAP2IT<sup>®</sup> MC Cable Connectors

Made in USA 

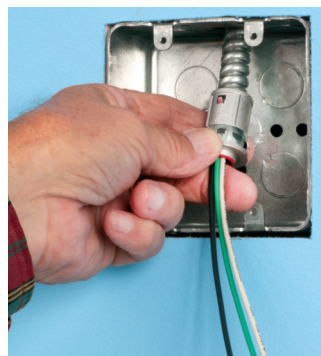
*Easy to Install. Snap onto cable, snap into box • No Tools!*



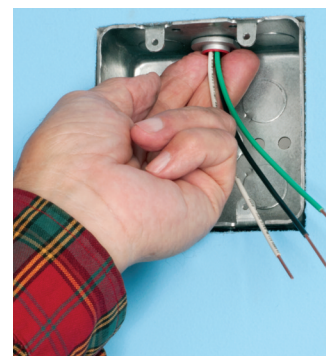
Pull MC cable through knockout in installed old work box.



38RAST with insulated throat



Push assembly into box...



...snapping it into the box. Fast and easy. No tools required!

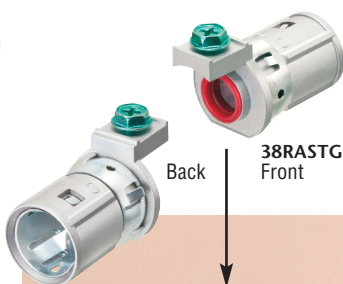
38RAST



Front

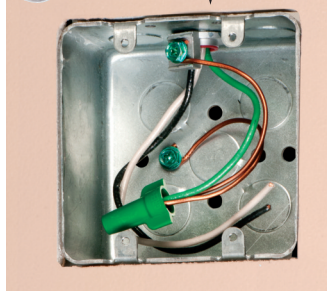


Back



38RASTG Front

Back



### Snap2It<sup>®</sup> Connectors with insulated throat for New Work and Retrofit

CATALOG NUMBER	UPC/DCI/NAED MFG #01 8997
38RAST	13586
for NEW WORK or RETROFIT	
38RASTG	13588
with built-in ground for NEW WORK or RETROFIT	

CABLE TYPE	DIAMETER RANGE	CABLE RANGE	UNIT PKG	STD PKG
MC/HCF/AC Steel & Aluminum	.405 to .605	14/2 and 12/2	25	25
MCI-A Steel & Aluminum	.440 to .550	w/ and w/o ground	25	25
AC90, ACG90	.440 to .550	14/3, 14/4, 12/3, 12/4, 10/2, 10/3		
Flexible Metal Conduit Steel & Aluminum (RWFMC)	3/8" Flex*			

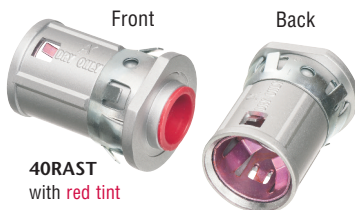
\*CSA Listed w/ anti-short bushing ONLY

### Tinted red inside fitting

CATALOG NUMBER	UPC/DCI/NAED MFG #01 8997
40RAST	13587
for NEW WORK or RETROFIT	
40RASTG	22091
with built-in ground for NEW WORK or RETROFIT	

CABLE TYPE	DIAMETER RANGE	CABLE RANGE	UNIT PKG	STD PKG
MC/HCF/AC Steel & Aluminum	.485 to .610	14/3, 12/2 and 12/3	25	25
MCI-A Steel & Aluminum	.480 to .580	w/ and w/o ground	25	25
AC90, ACG90	.480 to .550	14/4, 12/4, 10/2, 10/3		
Flexible Metal Conduit Steel & Aluminum (RWFMC)	3/8" Flex*			

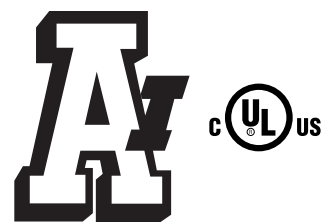
\*CSA Listed w/ anti-short bushing ONLY



40RAST with red tint



40RASTG with red tint



## Arlington

1 Stauffer Industrial Park  
Scranton, PA 18517  
800/233.4717  
Fax 570/562.0646  
www.aifittings.com

Patent pending

Distributed by