

# Heavy-Duty Enclosure Boxes

Made in USA 

**NEW!**  
MEETS  
NEMA  
3R

*Non-metallic • Protect Devices, Backups and More!*

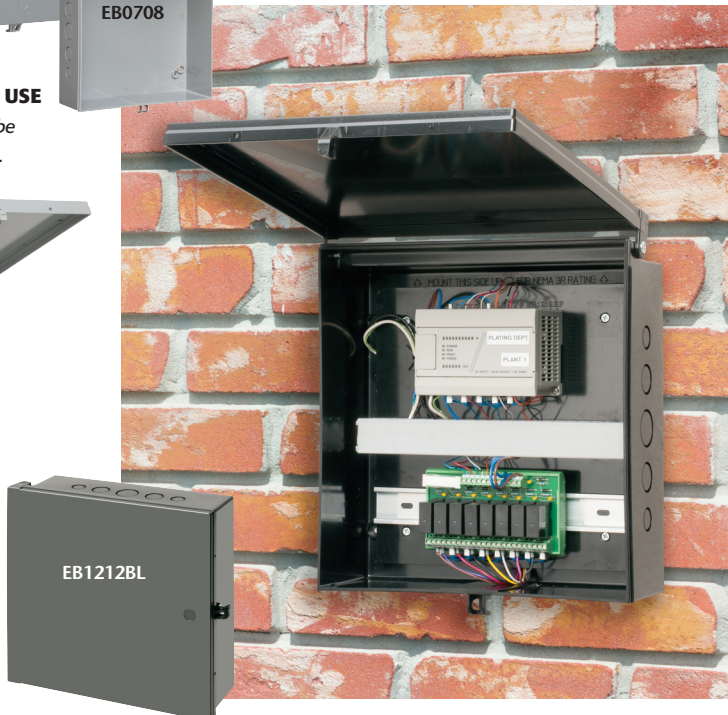


## **NEMA 3R RATED FOR OUTDOOR and INDOOR USE**

*For outdoor use, box must be mounted with hinge on top.*



EB1212BP  
Back plate installed



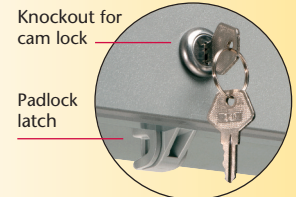
Arlington's non-metallic enclosure boxes **MEET NEMA 3R requirements for outdoor use.** They're the perfect solution for protecting and securing power backups, security devices and other valuable equipment indoors *or outside.*

Made of heavy-duty, UV rated non-metallic material, and available in three sizes - our boxes are NEMA 3R rated for *outdoor use when mounted with the hinge on top.*

- 7" x 8" x 3.5"
  - 11" x 11" x 3.5"
  - 12" x 12" x 4"
  - 12" x 12" x 6"
- ...with or without a back plate

Using a back plate allows an installer to mount components to the plate even after the enclosure box is mounted. Changing batteries and doing other maintenance work is easily accomplished by removing the plate.

Arlington's enclosure boxes are 'lockable' via a knockout on the front of the box for a cam lock – or a latch that holds a padlock.



- Meets NEMA Type 3R Requirements
- Available in gray and black
- Optional cam lock sold separately
- Convenient 1/2" and 3/4" knockouts



## Arlington

1 Stauffer Industrial Park  
Scranton, PA 18517  
**800/233.4717**  
**Fax 570/562.0646**  
[www.aifittings.com](http://www.aifittings.com)

# Heavy-Duty, Non-metallic Enclosure Boxes



Available With or Without Back Plate • Meets NEMA 3R

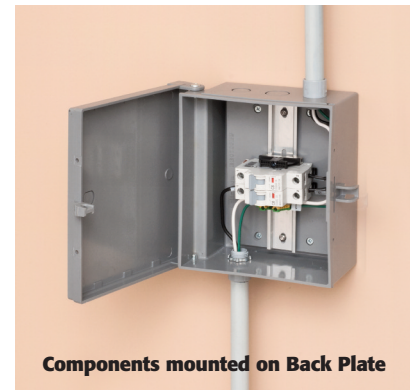
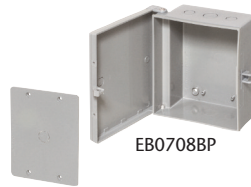
## GRAY ENCLOSURE BOXES

CATALOG NUMBER	UPC/DCI/NAED MFG #01 8997	DESCRIPTION GRAY Non-metallic	UNIT PKG	STD PKG
<b>No Back Plate</b>				
EB0708	12672	7" x 8" x 3.5"	1	4
EB1111	12670	11" x 11" x 3.5"	1	5
EB1212	12671	12" x 12" x 4"	1	5
EB12126	23172	12" x 12" x 6"	1	4



Installing Back Plate (interior use)

<b>Includes Back Plate</b>				
EB0708BP	23170	7" x 8" x 3.5" with Back Plate	1	4
EB1111BP	23171	11" x 11" x 3.5" with Back Plate	1	5
EB1212BP	23155	12" x 12" x 4" with Back Plate	1	5
EB12126BP	23173	12" x 12" x 6" with Back Plate	1	4



Components mounted on Back Plate

## BLACK ENCLOSURE BOXES

CATALOG NUMBER	UPC/DCI/NAED MFG #01 8997	DESCRIPTION BLACK Non-metallic	UNIT PKG	STD PKG
<b>No Back Plate</b>				
EB0708BL	23160	7" x 8" x 3.5"	1	4
EB1111BL	23162	11" x 11" x 3.5"	1	5
EB1212BL	23164	12" x 12" x 4"	1	5
<b>Includes Back Plate</b>				
EB1212BPBL	23166	12" x 12" x 4" with Back Plate	1	5



Hinge on side for indoor use



EB0708BP with door closed

EBL1	11400	OPTIONAL Cam Lock	1	10
------	-------	-------------------	---	----



**Arlington**

1 Stauffer Industrial Park  
Scranton, PA 18517  
800/233.4717  
Fax 570/562.0646  
www.aifittings.com

Made in USA

Distributed by