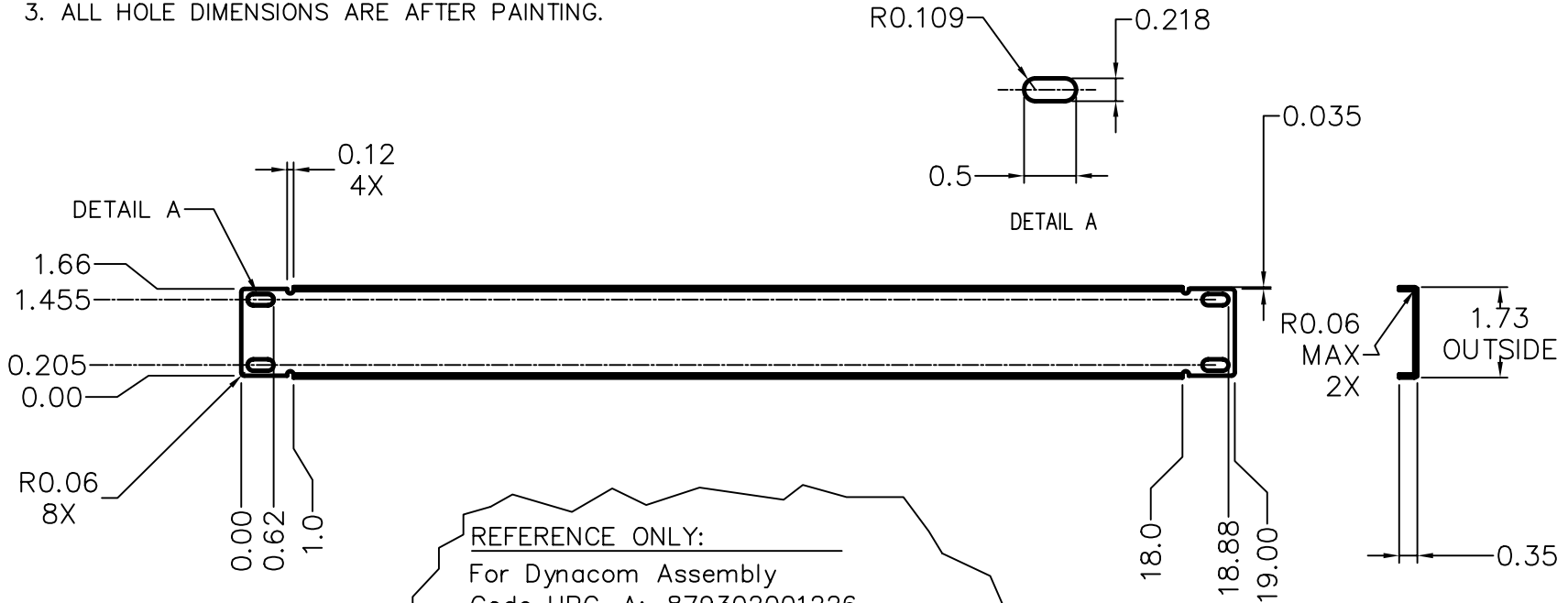


THE INFORMATION CONTAINED HEREON IS PROPRIETARY AND CONFIDENTIAL TO DYNACOM CORPORATION. AND SHALL NOT BE USED OR DISCLOSED, IN WHOLE OR IN PART WITHOUT FIRST OBTAINING THE WRITTEN PERMISSION OF DYNACOM CORPORATION.

ZONE	REV.	DESCRIPTION	DATE	APPV.
-	A	INITIAL RELEASE	07/06/05	E.A.

NOTES:

1. MATERIAL: 16 GA. (0.060) COLD ROLLED STEEL.
2. FINISH: BLACK, SEMI GLOSS, MED TEXTURE POWDER COAT.
3. ALL HOLE DIMENSIONS ARE AFTER PAINTING.



REFERENCE ONLY:

For Dynacom Assembly
Code UPC-A: 879302001226
Attach Adhesive Label to Plastic Bag

P/N: 2016-RR100B

Blank Panel 1U 1.75"

Quantity: 1



e-mail.....info@dynacomcorp.com

1366 San Mateo Ave Suite 201
South San Francisco CA 94080

TOLS. .X=+/- 0.030, .XX=+/- 0.010, .XXX=+/- .005, ANGLES=+/-0.5 DEG.

NEXT ASSY: -

DRAWN: E.A. 07/06/05

CHECKED: Eddy Lee

TITLE:

Blank Panel 1U 1.75"

DWG. NO.

2016-RR100B

REV.

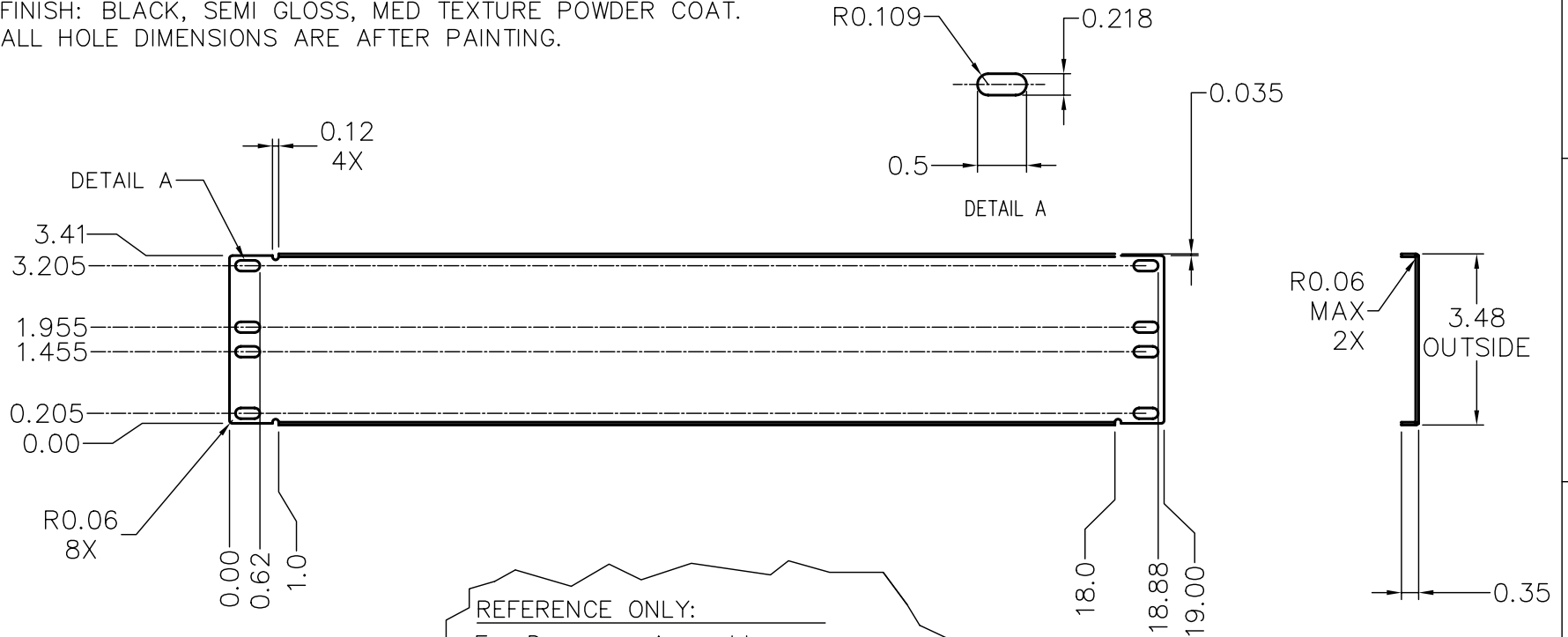
A

THE INFORMATION CONTAINED HEREON IS PROPRIETARY AND CONFIDENTIAL TO DYNACOM CORPORATION. AND SHALL NOT BE USED OR DISCLOSED, IN WHOLE OR IN PART WITHOUT FIRST OBTAINING THE WRITTEN PERMISSION OF DYNACOM CORPORATION.

ZONE	REV.	DESCRIPTION	DATE	APPV.
-	A	INITIAL RELEASE	07/06/05	E.A.

NOTES:

1. MATERIAL: 16 GA. (0.060) COLD ROLLED STEEL.
2. FINISH: BLACK, SEMI GLOSS, MED TEXTURE POWDER COAT.
3. ALL HOLE DIMENSIONS ARE AFTER PAINTING.



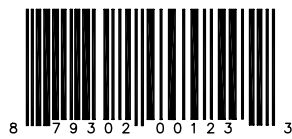
REFERENCE ONLY:

For Dynacom Assembly
 Code UPC-A: 879302001233
 Attach Adhesive Label to Plastic Bag

P/N: 2016-RR200B

Blank Panel 2U 3.5"

Quantity: 1



e-mail.....info@dynacomcorp.com
 1366 San Mateo Ave Suite 201
 South San Francisco CA 94080

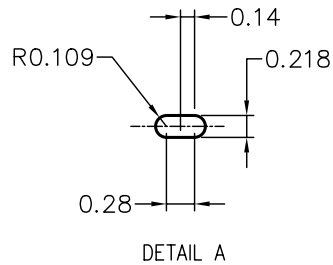
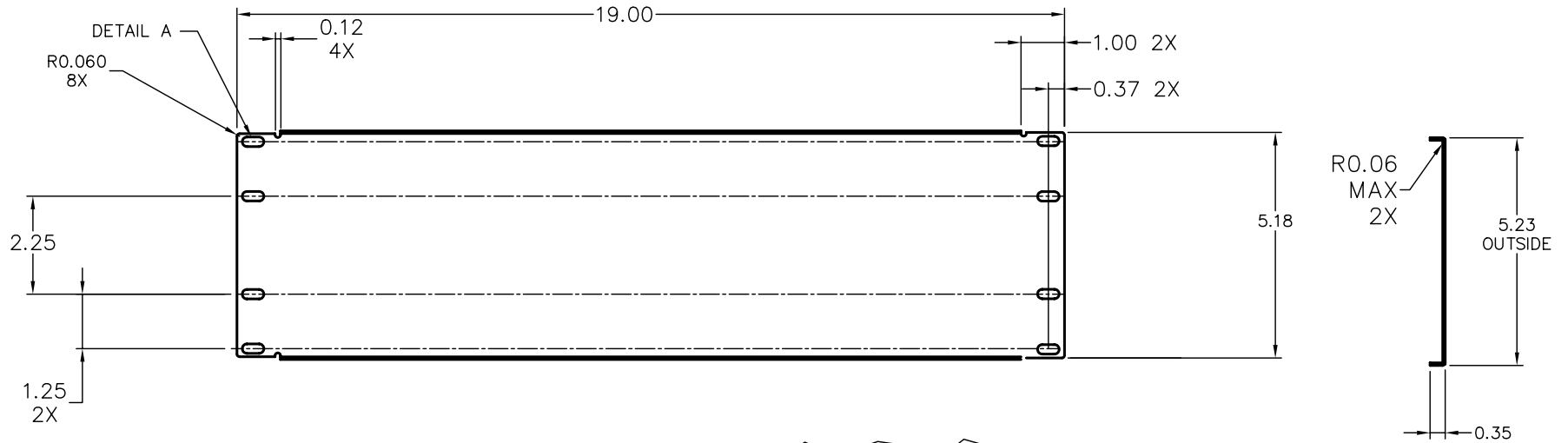
TOLS. .X=+/- 0.030, .XX=+/- 0.010, .XXX=+/- .005, ANGLES=+/-0.5 DEG.			
NEXT ASSY: -	DRAWN: E.A. 08/08/00	CHECKED: Eddy Lee	
TITLE: Blank Panel 2U 3.50"		DWG. NO. 2016-RR200B	SHEET 1 OF 1 REV. A

THE INFORMATION CONTAINED HEREON IS PROPRIETARY AND CONFIDENTIAL TO DYNACOM CORPORATION. AND SHALL NOT BE USED OR DISCLOSED, IN WHOLE OR IN PART WITHOUT FIRST OBTAINING THE WRITTEN PERMISSION OF DYNACOM CORPORATION.

ZONE	REV.	DESCRIPTION	DATE	APPV.
-	A	INITIAL RELEASE	07/06/05	E.A.

NOTES:

1. MATERIAL: 16 GA. (0.060) COLD ROLLED STEEL.
2. FINISH: BLACK, SEMI GLOSS, MED TEXTURE POWDER COAT.
3. ALL HOLE DIMENSIONS ARE AFTER PAINTING.



REFERENCE ONLY:

For Dynacom Assembly
 Code UPC-A: 879302001240
 Attach Adhesive Label to Plastic Bag

P/N: 2016-RR300B
 Blank Panel 3U 5.25"
 Quantity: 1



e-mail.....info@dynacomcorp.com

1366 San Mateo Ave Suite 201
 South San Francisco CA 94080

TOLS. .X=+/- 0.030, .XX=+/- 0.010, .XXX=+/- .005, ANGLES=+/-0.5 DEG.

NEXT ASSY: -	DRAWN: E.A. 07/06/05	CHECKED: Eddy Lee
TITLE: Blank Panel 3U 5.25"	DWG. NO. 2016-RR300B	SHEET 1 OF 1 REV. A