

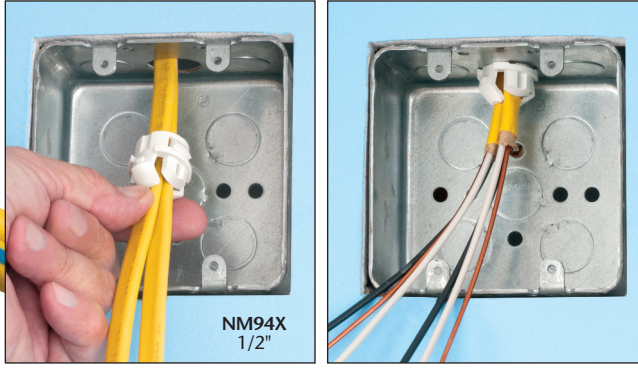
NEW!
more on
reverse

White Button® Non-Metallic Cable Connectors

Easy, Push-in Installation from Inside or Outside the Box



NM94X, NM95X Easy, push-in installation from **OUTSIDE** a new work box or **INSIDE** of an existing box



Save money with Arlington's non-metallic NM cable connectors. They're the *lowest* cost NM cable connectors on the market, and the fastest to install! Simply push the connector into the knockout, and you're done.

Listed for single or multiple cables, Arlington's new White Button® connectors offer smooth, easy cable insertion of one or two cables into a single opening from the **INSIDE** or **OUTSIDE** the box.

Better than our popular NM94 and NM95 – at the same cost!

• Cable Ranges

1/2" NM94X	3/4" NM95X
One 14/2 to 6/2	One 14/2 to 6/2
One 14/2/2	One 14/3 to 6/3
One 12/4	One 12/4
One 12/2/2	One 12/2/2
One 14/3 to 10/3	
Two 14/2 to 10/2	Two 14/2 to 10/2
Two 14/3	Two 14/3 to 10/3
Two 12/3	
One 14/2 & One 12/2	One 14/2 & One 12/2
One 14/2 & One 10/2	One 14/2 & One 10/2
One 12/2 & One 10/2	One 12/2 & One 10/2
	One 14/3 & One 12/3
	One 14/2 NMB-PCS
	One 12/2 NMB-PCS
	One 14/2 to 10/2 NMD90
	Two 14/2 to 10/2 NMD90

NM95X on NMD90

- **NM95X** works with the new NMB-PCS cable – and Canada's NMD90 cables
- Easy removal with pliers or screwdriver
- UL Listed – exceeds UL and CSA pullout requirements



Arlington®

1 Stauffer Industrial Park
Scranton, PA 18517
800/233.4717 • Fax 570/562.0646
www.aifittings.com

CATALOG NUMBER	UPC/DCI/NAED MFG #01 8997	DESCRIPTION/SIZE NM Cable Connector with SINGLE opening	COLOR/ KO SIZE	UNIT PKG	STD PKG
NM94X White Button®	05489	3/8" Trade Size	White 1/2"	200	1000
NM95X White Button®	21193	3/4" Trade Size	White 3/4"	50	500

Made in USA

Black Button® NM Cable Connectors

Made in USA 

Lowest Cost NM Cable Connector • Easy, Push-in Installation

- Listed for one or two cables
- Easy installation
- Smooth, easy cable insertion
- Secure hold on cable – exceeds UL pullout tests

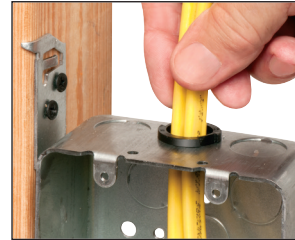
In a connector with TWO SEPARATE openings: NM942



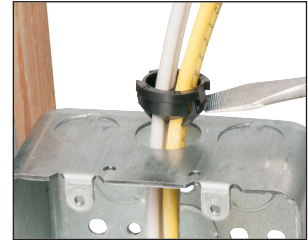
CATALOG NUMBER	UPC/DCI/NAED MFG #01 8997	DESCRIPTION/SIZE NM Cable Connectors with TWO individual openings	COLOR/ KO SIZE	CABLE RANGES	UNIT PKG	STD PKG
NM942	04281	3/8" Trade Size	Black 1/2"	One or Two 14/2 One or Two 12/2 One 14/2 and One 12/2 One or Two 10/2	250	1000



1 from OUTSIDE new work box Push NM942 into KO with light finger pressure.

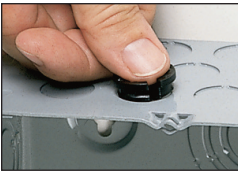


2 Insert one or two cables into individual openings.

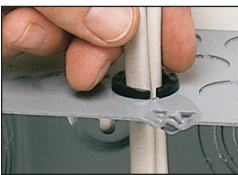


3 To remove from KO. Slip screwdriver under connector and twist.

In a connector with a SINGLE opening insert TWO cables together or individually into NM94, NM95 or NM96. Add a second cable without removing the first.

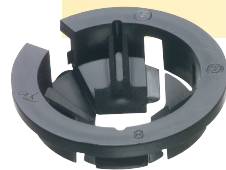


1 from OUTSIDE box push the NM cable connector into KO with light finger pressure.



2 Insert one or two cables in a single opening, fast! Push the NM cable(s) into the connector to the desired length.

CATALOG NUMBER	UPC/DCI/NAED MFG #01 8997	DESCRIPTION/SIZE NM Cable Connector with SINGLE opening	KO SIZE	CABLE RANGES	UNIT PKG	STD PKG
NM94	05488	3/8" Trade Size	1/2"	One 14/2 to 6/2	250	1000
NM940	72156	3/8" Trade Size Black Button®	1/2"	One 14/2/2 One 12/4 One 14/3 to 10/3 Two 14/2 to 10/2 Two 14/3 Two 12/3 One 14/2 and One 12/2 One 14/2 and One 10/2 One 12/2 and One 10/2 One 14/3 and One 12/3	100	1000
NM95	10956	3/4" Trade Size Black Button®	3/4"	One 14/2 to 6/2 One 14/3 to 6/3 One 14/2/2 One 12/4 Two 14/2 to Two 10/2 Two 14/3 to Two 10/3 One 14/2 and One 12/2 One 14/2 and One 10/2 One 12/2 and One 10/2 One 14/3 and One 12/3 One 14/2 NMB-PCS One 12/2 NMB-PCS One 14/2 to 10/2 NMD90 Two 14/2 to 10/2 NMD90	50	500
NM96	72158	1" Trade Size Black Button®	1"	One 4/3 to 8/3 One 6/2 to 4/2	25	250



Arlington®

1 Stauffer Industrial Park
Scranton, PA 18517
800/233.4717 • Fax 570/562.0646
www.aifittings.com

Distributed by