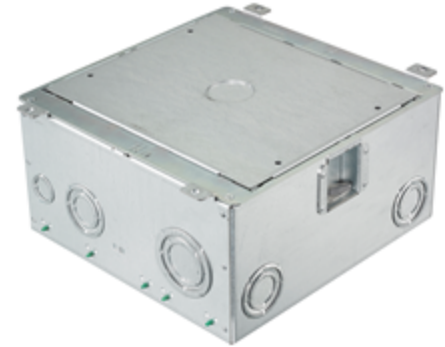


Floor Boxes
SystemOne Recessed 10 Gang Floor Box
For use in Raised Access or Wood Floors

HUBBELL

Features

- 5 1/2 in. box depth
- Stamped steel construction
- 1/2 in to 2 in knock outs
- Patent pending, labor saving, easy mount device plates
- Rectangular covers



Ordering Information

- Temporary cover for use prior to trim-out
- 6 inch solid conductor ground pigtail in each gang

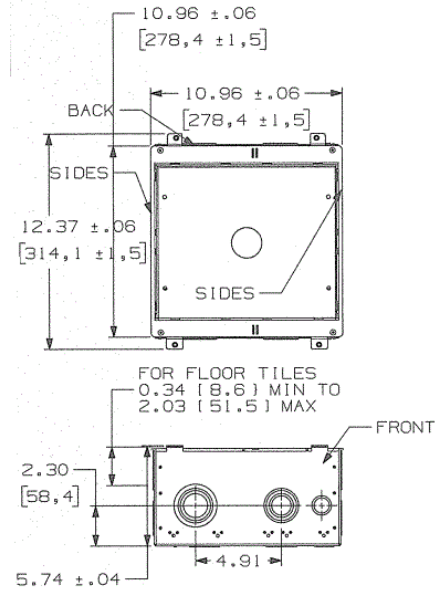
| | | | |
|-----------------------------------|--|-------------------------------------|---------------------------------------|
| Catalog Number AFB10G55 | UPC Number 783585447445 | Cover Series 10GAFBxx | Box Type Raised Access |
| Device Volume 25 cu in. | Depth Behind Mounting Plate 2 3/4 in.. | Max. Tile Thickness 2 in. | Min. Tile Thickness 3/4 in. |

Specifications

| | |
|--|---------------------------|
| Box Material | 16 gauge galvanized steel |
| Access Cover Material (ordered separately) | Die cast aluminum |

Required

Cover
 AFB Style Rectangular Covers (for use with carpet, tile, VCT and [Click here](#) other engineered floors)



Online Resources

[eCatalog](#)