

**Corrosion resistance and industrial strength for rugged applications.**

CG Series



Deluxe Aluminum Cord Grips are UL Listed and CSA Certified for use in both indoor and outdoor applications to prevent cable pullout, to control arc of bend, and to provide a tight seal against environmental elements such as dirt, moisture and coolants. Cord grips are available in a wide range of conduit sizes from 1/4" to 3" in straight, 90° and 45° styles. A uniquely designed combination tightening surface with both a hex area and a knurled surface provides extra gripping for initial hand tightening.

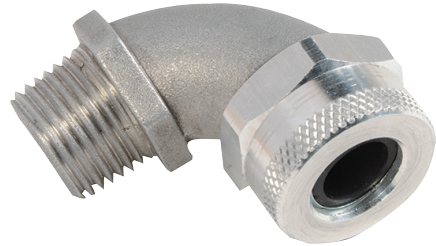
**Features & Benefits**



**Aluminum Cord Grip**  
**Straight**



**Aluminum Cord Grip**  
**45°**



**Aluminum Cord Grip**  
**90°**

- A unique design with a combination tightening surface that includes both a hex area and knurled surface providing extra gripping for initial hand tightening and ease of installation
- Anti-friction washer that fits between the nut and bushing for easier compression and a tight seal

- Available in straight, 45°, and 90° styles
- All aluminum design offers corrosion resistance and industrial strength for heavy-duty applications

**3rd Party Compliance**



Most Flexcor products have UL and/or CSA approvals. Please consult factory for approval information. Conforms to NEMA 3R.

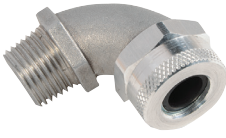
**HAZARDOUS LOCATIONS**

Definition	Legrand Products
The Legrand products listed are suitable for use in hazardous locations per Class I, Div. 2; Class II, Div. 1 & 2; and Class III, Div. 1 & 2	CG Series – Straight, 90°, 45° CGSS Series – Straight CGSS-M Series – Straight

## Ordering Information



Aluminum Cord Grip  
Straight



Aluminum Cord  
Grip 90°



Aluminum  
Cord Grip 45°

### Aluminum Corrosion-Resistant Cord Grips

Straight Male Catalog Number	90° Male Catalog Number	45° Male Catalog Number	Cable Diameter Range	Form Size
<b>1/4" Aluminum Corrosion-Resistant Cord Grip</b>				
CG25188	—	—	0.120" - 0.180"	F1
CG25250	—	—	0.180" - 0.250"	F1
CG25312	—	—	0.250" - 0.310"	F1
CG25375	—	—	0.310" - 0.370"	F1
CG25438	—	—	0.370" - 0.430"	F1
<b>3/8" Aluminum Corrosion-Resistant Cord Grip</b>				
CG38188	CG3890188	—	0.120" - 0.180"	F1
CG38250	CG3890250	—	0.180" - 0.250"	F1
CG38312	CG3890312	—	0.250" - 0.310"	F1
CG38375	CG3890375	—	0.310" - 0.370"	F1
CG38438	CG3890438	—	0.370" - 0.430"	F1
<b>1/2" Aluminum Corrosion-Resistant Cord Grip</b>				
CG501881	CG5090188	CG5045188	0.120" - 0.180"	F1
CG501882	—	—	0.120" - 0.180"	F2
CG502501	CG5090250	CG5045250	0.180" - 0.250"	F1
CG502502	—	—	0.180" - 0.250"	F2
CG503121	CG5090312	CG5045312	0.250" - 0.310"	F1
CG503122	—	—	0.250" - 0.310"	F2
CG503751	CG5090375	CG5045375	0.310" - 0.370"	F1
CG503752	—	—	0.310" - 0.370"	F2
CG504381	CG5090438	CG5045438	0.370" - 0.430"	F1
CG504382	—	—	0.370" - 0.430"	F2
—	CG5090500	CG5045500	0.430" - 0.500"	F2
—	CG5090562	CG5045562	0.500" - 0.560"	F2
—	CG5090625	CG5045625	0.560" - 0.620"	F2
CG505002	—	—	0.430" - 0.500"	F2
CG505003	—	—	0.430" - 0.500"	F3
CG505622	—	—	0.500" - 0.560"	F2
CG505623	—	—	0.500" - 0.560"	F3
CG506252	—	—	0.560" - 0.620"	F2
CG506253	—	—	0.560" - 0.620"	F3
CG506883	—	—	0.620" - 0.680"	F3
CG507503	—	—	0.620" - 0.750"	F3
CG508123	—	—	0.680" - 0.810"	F3

### Aluminum Corrosion-Resistant Cord Grips

Straight Male Catalog Number	90° Male Catalog Number	45° Male Catalog Number	Cable Diameter Range	Form Size
<b>3/4" Aluminum Corrosion-Resistant Cord Grip</b>				
CG7510004	—	—	0.870" - 1.000"	F4
CG751882	—	—	0.120" - 0.180"	F2
CG752502	—	—	0.180" - 0.250"	F2
CG753122	—	—	0.250" - 0.310"	F2
CG753752	—	—	0.310" - 0.370"	F2
CG754382	—	—	0.370" - 0.430"	F2
CG755002	CG7590500	CG7545500	0.430" - 0.500"	F2
CG755003	—	—	0.430" - 0.500"	F3
CG755622	CG7590562	CG7545562	0.500" - 0.560"	F2
CG755623	—	—	0.500" - 0.560"	F3
CG755624	—	—	0.500" - 0.560"	F4
CG756252	CG7590625	CG7545625	0.560" - 0.620"	F2
CG756253	—	—	0.560" - 0.620"	F3
CG756254	—	—	0.560" - 0.620"	F4
CG756883	CG7590688	CG7545688	0.560" - 0.680"	F3
CG756884	—	—	0.560" - 0.680"	F4
CG757503	CG7590750	CG7545750	0.620" - 0.750"	F3
CG757504	—	—	0.620" - 0.750"	F4
CG758123	CG7590812	CG7545812	0.680" - 0.810"	F3
CG758124	—	—	0.680" - 0.810"	F4
CG758754	—	—	0.750" - 0.870"	F4
CG759384	—	—	0.810" - 0.930"	F4
<b>1" Aluminum Corrosion-Resistant Cord Grip</b>				
CG10010004	CG100901000	CG100451000	0.870" - 1.000"	F4
CG10010005	—	—	0.870" - 1.000"	F5
CG10011255	—	—	1.000" - 1.120"	F5
CG10012505	—	—	1.120" - 1.250"	F5
CG10013755	—	—	1.250" - 1.370"	F5
CG1005624	CG10090562	CG10045562	0.440" - 0.560"	F4
CG1006254	CG10090625	CG10045625	0.560" - 0.620"	F4
CG1006884	CG10090688	CG10045688	0.560" - 0.680"	F4
CG1007504	CG10090750	CG10045750	0.620" - 0.750"	F4
CG1008124	CG10090812	CG10045812	0.680" - 0.810"	F4
CG1008754	CG10090875	CG10045875	0.750" - 0.870"	F4
CG1005624	—	—	0.440" - 0.560"	F4
CG1006254	—	—	0.560" - 0.620"	F4
CG1006884	—	—	0.560" - 0.680"	F4
CG1007504	—	—	0.620" - 0.750"	F4
CG1008124	—	—	0.680" - 0.810"	F4
CG1008754	—	—	0.750" - 0.870"	F4
CG1009384	CG10090938	CG10045938	0.810" - 0.930"	F4

\*To determine workload safety factor, divide approximate break strength by 10.

## Ordering Information

### Aluminum Corrosion-Resistant Cord Grips

Straight Male Catalog Number	90° Male Catalog Number	45° Male Catalog Number	Cable Diameter Range	Form Size
<b>1 1/4" Aluminum Corrosion-Resistant Cord Grip</b>				
CG12510005	CG125901000	CG125451000	0.870" - 1.000"	F5
CG12511255	—	—	1.000" - 1.120"	F5
CG12512505	—	—	1.120" - 1.250"	F5
CG12513755	—	—	1.250" - 1.370"	F5
—	CG125901125	CG125451125	1.000" - 1.130"	F5
—	CG125901250	CG125451250	1.130" - 1.250"	F5
—	CG125901375	CG125451375	1.250" - 1.380"	F5
CG1256885	CG12590688	CG12545688	0.560" - 0.680"	F5
CG1258125	CG12590812	CG12545812	0.680" - 0.810"	F5
CG1258755	CG12590875	CG12545875	0.750" - 0.870"	F5
<b>1 1/2" Aluminum Corrosion-Resistant Cord Grip</b>				
CG15010005	CG150901000	CG150451000	0.870" - 1.000"	F5
CG15011255	CG150901125	CG150451125	1.000" - 1.120"	F5
CG15012505	CG150901250	CG150451250	1.120" - 1.250"	F5
CG15013755	CG150901375	CG150451375	1.250" - 1.370"	F5
CG15013756	—	—	1.250" - 1.370"	F6
CG15015626	CG150901562	—	1.430" - 1.560"	F6
CG15016886	CG150901688	—	1.560" - 1.680"	F6
CG15018126	CG150901812	—	1.680" - 1.810"	F6
CG1506885	CG15090688	CG15045688	0.560" - 0.680"	F5
CG1508125	CG15090812	CG15045812	0.680" - 0.810"	F5
CG1508755	CG15090875	CG15045875	0.750" - 0.870"	F5
<b>2" Aluminum Corrosion-Resistant Cord Grip</b>				
CG20013756	CG2009013756	—	1.250" - 1.370"	F6
CG20014376	—	—	1.310" - 1.430"	F6
CG20015626	CG2009015626	—	1.430" - 1.560"	F6
CG20016886	CG2009016886	—	1.560" - 1.680"	F6
CG20018126	CG2009018126	—	1.680" - 1.810"	F6
CG20018127	—	—	1.680" - 1.810"	F7
CG20019387	—	—	1.810" - 1.940"	F7
CG20020627	—	—	1.940" - 2.060"	F7
CG20021887	—	—	2.060" - 2.190"	F7
CG20023127	—	—	2.190" - 2.310"	F7
CG20024387	—	—	2.310" - 2.440"	F7
<b>2 1/2" Aluminum Corrosion-Resistant Cord Grip</b>				
CG25018127	—	—	1.688" - 1.812"	F7
CG25019387	—	—	1.810" - 1.940"	F7
CG25020627	—	—	1.938" - 2.062"	F7
CG25021887	—	—	2.062" - 2.188"	F7
CG25023127	—	—	2.188" - 2.312"	F7
CG25024387	—	—	2.312" - 2.438"	F7



Aluminum Cord Grip Straight

Aluminum Cord Grip 90°

Aluminum Cord Grip 45°

### Aluminum Corrosion-Resistant Cord Grips

Straight Male Catalog Number	Cable Diameter Range	Form Size
<b>3" Aluminum Corrosion-Resistant Cord Grip</b>		
CG30018127	1.680" - 1.810"	F7
CG30019387	1.810" - 1.940"	F7
CG30020627	1.940" - 2.060"	F7
CG30021887	2.060" - 2.180"	F7
CG30023127	2.180" - 2.310"	F7
CG30024387	2.310" - 2.440"	F7
CG30026259	2.440" - 2.630"	F9
CG30028129	2.630" - 2.810"	F9
CG30030009	2.810" - 3.000"	F9
CG30032509	3.000" - 3.250"	F9
<b>3 1/2" Aluminum Corrosion-Resistant Cord Grip</b>		
CG35031808	3.000" - 3.180"	F8
CG35033358	3.180" - 3.340"	F8
CG35035308	3.340" - 3.530"	F8
<b>4" Aluminum Corrosion-Resistant Cord Grip</b>		
CG40036909	3.500" - 3.690"	F9
CG40038559	3.690" - 3.860"	F9
CG40040259	3.860" - 4.030"	F9

Country of Origin: United States

\*To determine workload safety factor, divide approximate break strength by 10.

---

## Field Uses/Vertical Markets


- Temporary Power
- Industrial Manufacturing
- Maintenance Repair Operations
- Panel Building
- Utilities
- Renewable Energy

---

## Also available...

- Hospital Grade Devices
- PlugTail® Devices
- SPD & Isolated Ground Devices
- Ground Continuity Monitoring (GCM)
- Straight Blade Plugs & Connectors
- Turnlok® Locking Devices
- Weatherproof Boxes & Covers
- IEC 309 Industrial Products
- Portable GFCIs

---

 The paper used to print this document is an environmentally responsible paper with 10% post consumer waste, with FSC and SFI Chain of Custody certifications, Lacey Act compliant. 100% of the electricity used to manufacture Flo sheets is generated with Green-e certified renewable energy.

All brand and product names referenced in this document are registered trademarks or trademarks of their respective holders.



**Legrand, North America**  
60 Woodlawn Street  
West Hartford, CT 06110  
1.877.BY.LEGRAND (295.3472)  
[www.legrand.us](http://www.legrand.us)

570 Applewood Crescent  
Vaughan, Ontario L4K 4B4  
905.738.9195  
[www.legrand.ca](http://www.legrand.ca)

FOLLOW US

