

# Countertop Box Kits

**NEW!**  
PLASTIC BOX

**NEW!**  
more on  
reverse

## Round Plastic Box with Round Brass or Nickel Trapdoor Covers



FLBT6520NL



FLBT6520GNL



FLBT6520UNL



FLBT6520GMB  
closed

**The round box and cover allow for positioning the assembly parallel with the countertop and backsplash!**

**Solves the 'ANGLED BOX' problem!...**



Arlington's **Countertop BOX KITS** with round plastic boxes and round metal covers give you *options* for installing a device in a countertop. *AND a parallel, great-looking installation!*

**Get your kit with an installed UL Listed tamper resistant decorator-style GFCI... a tamper resistant receptacle... or a TR receptacle with two USB ports!**

The gasketed, brass or nickel-plated **ROUND TRAPDOOR COVERS** look great! They cover miscut openings, and close flush with the countertop, preventing damage to the devices in the box.

### Easy, secure installation

A steel spring clip holds the plastic box securely against the surface when the screws are tightened. It's also 'bendable' so it's easy to insert into the opening in the countertop.

- Fits granite or other countertop material up to 1-1/2" thick
- Easy 'No Glue' installation
- Complies with NEC section 406.5 (E) for use in countertops or similar work surfaces



Listed  
Receptacle

**Arlington**

1 Stauffer Industrial Park  
Scranton, PA 18517  
**800/233.4717**  
**Fax 570/562.0646**  
[www.aifittings.com](http://www.aifittings.com)

# Countertop Box Kits



with Round Brass or Nickel-plated Trapdoor Covers

## Easy to install



1 Determine box location. Cut a 5" diameter opening in countertop. Insert box, bending the clip as necessary to go through opening.



2 Secure box to countertop by tightening two #10 screws inside box...



UNDERSIDE of COUNTER

3 ...drawing the box securely against the underside of the counter. NO GLUING!



4 Wire receptacle in accordance with National, State and local codes.



5 Install trapdoor coverplate to box using the two #6-32 screws provided. *Note: Round cover hides miscut openings*



6 Rotate box/cover assembly into position, lining it up parallel with the countertop and backsplash.



## PARALLEL Installation



## Round Plastic Box with ROUND Metal Covers

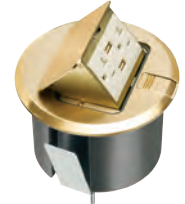
Catalog Number	UPC/DEI/NAED Mfg. #018997	Description Metal Cover Finish	Installed UL LISTED Device	Unit/Std Pkg
FLBT6520UMB	22056	Brass	20A decorator-style TR receptacle, with (2) USB ports	1
FLBT6520MB	22112	Brass	20A decorator-style Tamper Resistant receptacle	1
FLBT6520GMB	22110	Brass	20A decorator-style Tamper Resistant GFCI receptacle	1
FLBT6520UNL	22057	Nickel-plated	20A decorator-style TR receptacle, with (2) USB ports	1
FLBT6520NL	22113	Nickel-plated	20A decorator-style Tamper Resistant receptacle	1
FLBT6520GNL	22111	Nickel-plated	20A decorator-style Tamper Resistant GFCI receptacle	1



FLBT6520MB



FLBT6520GMB



FLBT6520UMB



FLBT6520NL



FLBT6520GNL



FLBT6520UNL

with 20A decorator-style TR receptacle

with 20A decorator-style TR, GFCI receptacle

with 20A decorator-style TR receptacle w (2) USB ports



Listed Receptacle

# Arlington

1 Stauffer Industrial Park  
Scranton, PA 18517  
800/233.4717  
Fax 570/562.0646  
www.aifittings.com

Distributed by