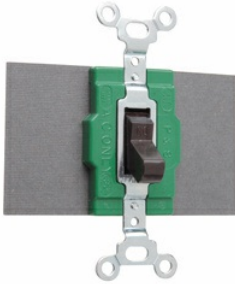


Single-Pole, Double-Throw Switch, 30A, 120/277V.



Features & Benefits

Oversize silver alloy contacts for long life and better heat dissipation.

Side wired terminals accept #14 - #10 AWG copper or copper-clad conductors.

Fiber terminal insulation barriers standard.

Can be mounted in standard device boxes or in NEMA 1 sheet steel enclosures.

Bodies, covers, and toggles molded of durable nylon.

Single Pole-Double Throw and Double Pole-Double Throw.

Locking Switches supplied with one 1498-NT key.

Normally open.

For covering patents, see www.legrand.us/patents.

For compatible wall plate options, from our TradeMaster unbreakable plates to our radiant screwless plates to our metal wall plates, click [here](#).

Specifications

General Info

Product Line	Pass & Seymour	Color	Brown
--------------	----------------	-------	-------

UPC Number	785007122701	Country Of Origin	Mexico
------------	--------------	-------------------	--------

Standard	UL Listed
----------	-----------

Listing Agencies / 3rd Party Agencies

CSA Listed	Yes	CSA File Number	17949
------------	-----	-----------------	-------

Technical Information

Amperage

30 A

Wattage

1 W

Voltage

120 V
