

ON-Q IN-WALL TV CONNECTION KIT NEW CONSTRUCTION / RETROFIT



In-wall power products from On-Q provide the perfect solution for a clean and professional installation of your wall-mounted TV. The tamper-resistant receptacle can power multiple devices, such as a TV, sound bar, or streaming players. With concentric knockout rings to support flexible conduit connections on the low voltage side, you can easily hide AV cables inside the wall for a seamless look. The recessed TV box can mount directly to studs with included screws for new construction installation or use drywall clips for retrofit applications, making it the perfect choice for your next home entertainment project.

In-Wall TV Connection Kit Features

- **Professional Look:** Hide power and cables for a clean look.
- **Supports LV Cables:** Includes concentric knockout rings for support of low voltage cables.
- **New Construction Ready:** Mount directly to wall studs with included screws for new construction installation.
- **Retrofit Ready:** TV box includes pre-installed wing clamps to secure to drywall in retrofit installations with a separate trim ring for a professional look.



BEFORE

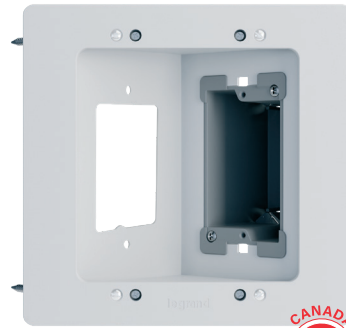
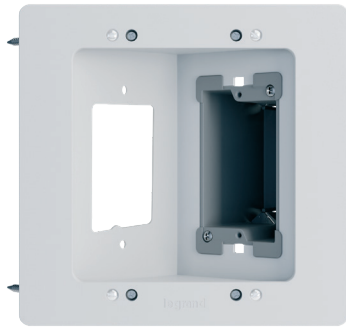


AFTER

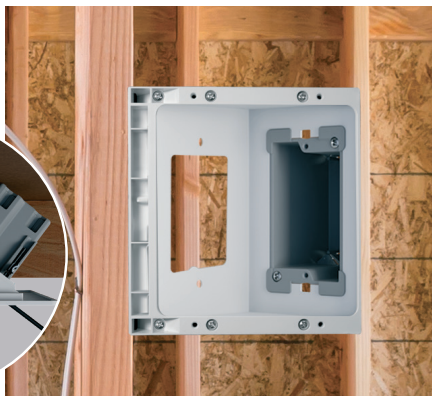
ON-Q

IN-WALL TV CONNECTION KIT

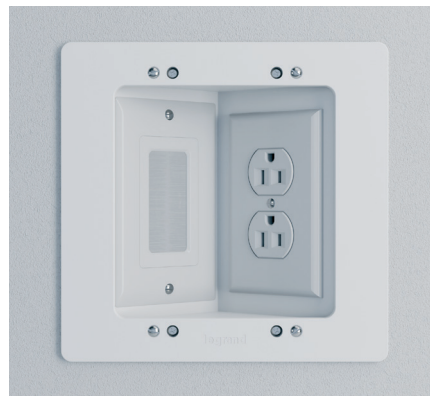
NEW CONSTRUCTION / RETROFIT



Model	HT2302B-WH	HT2302C-WH	HT2302K-WH
SKU	In-Wall TV Connection Kit (Blank)	In-Wall TV Connection Kit (Canada Compliant)	In-Wall TV Connection Kit (With Pre-Wired Outlet)
Info	Includes top box with removable trim ring, 1 Gang Old-Work Junction Box, and necessary mounting hardware.	Includes top box with removable trim ring, 1 Gang Old-Work Junction Box with metal grounding clip and necessary mounting hardware.	Includes top box with removable trim ring, 1 Gang Old-Work Junction Box, tamper resistant outlet, cable access brush strap, wall plates and necessary mounting hardware.
Receptacle	N/A	N/A	15A Decorator TR Receptacle
Color	White	White	White
Agency Listed	UL listed	cUL (Junction box approved for Canada)	UL listed



NEW CONSTRUCTION



RETROFIT

