

90° SNAP²IT[®] MC Cable Connectors

Made in USA 

MORE
on
reverse

Easy Snap-in Insertion • No Tools...Saves Time



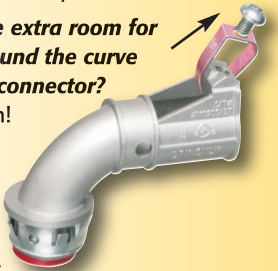
NEW!
90°
with clip

SAVE
1 Minute
per connector...

over 90° 2-screw
MC connectors!

Arlington's one-piece **90 DEGREE SNAP²IT[®] fittings** make cable installation easier than ever. And they handle the widest variety. **NO TOOLS!** Easy snap-in installation. Snap the fitting onto the cable. Snap the assembly into the box.

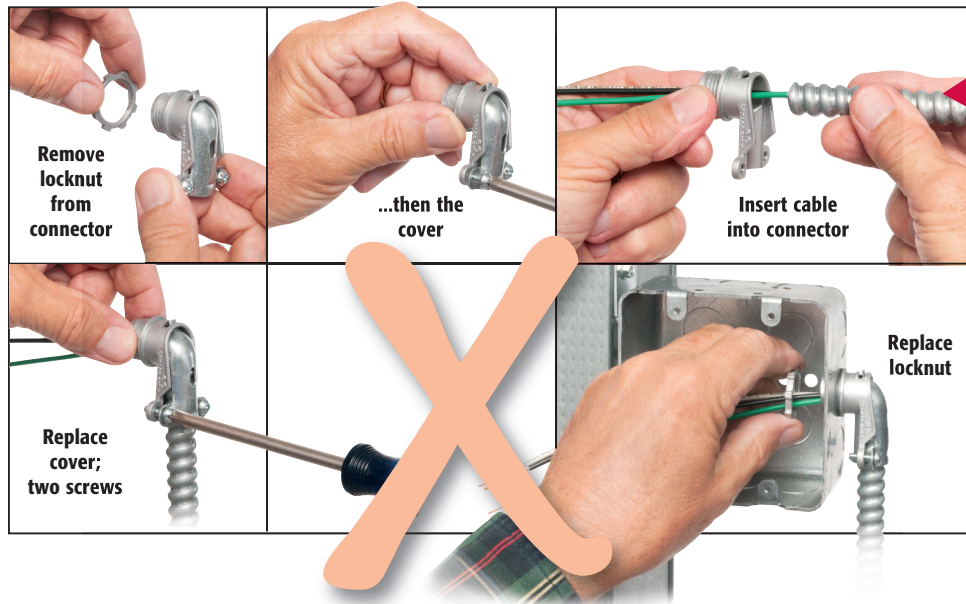
Need some extra room for cable to round the curve inside the connector? No problem! Loosen the screw on the clip *without removing it.* Insert the cable. Retighten the screw.



- **Widest total cable ranges**
14/2 to 10/3
- **Widest variety of cables**
For AC, MC, HCF, MC continuous corrugated aluminum cable, MCI-A cables (steel and aluminum), AC90 and ACG90
- **Secure installation** No pullout
- **Easy, screwdriver removal** from box; connector is reusable
- **Fully assembled – Ready to use** with and without insulated throat



AT THE SAME COST PER CONNECTOR!



Remove locknut from connector

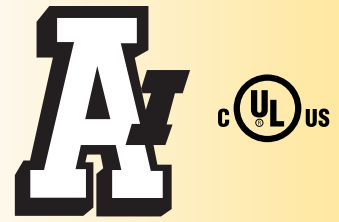
...then the cover

Insert cable into connector

Replace cover; two screws

Replace locknut

Eliminates multiple steps of 2-screw connector



Arlington

1 Stauffer Industrial Park
Scranton, PA 18517
800/233.4717
Fax 570/562.0646
www.aifittings.com

90° SNAP2IT® MC Cable Connectors

Made in USA 

*Easy
Snap-in
Insertion*

1
BEND WIRES
AS SHOWN
FOR EASY
INSERTION

2
INSERT
CABLE
INTO
FITTING

3
SNAP ASSEMBLY
INTO BOX



3810900AST

4010900AST

90° Snap2It® Connectors with and without Insulated Throat

CATALOG NUMBER	UPC/DCI/NAED MFG #01 8997	CABLE TYPE	DIAMETER RANGE	CABLE RANGE	UNIT PKG	STD PKG
3810900AST with insulated throat and removable clip	36510	MC/HCF/AC Steel & Aluminum	.405 to .605	14/2 and 12/2	25	250
		MCI-A Steel & Aluminum	.440 to .550	w/ and w/o ground		
		AC90, ACG90	.440 to .550	14/3, 14/4,		
		Flexible Metal Conduit Steel & Aluminum (RWFMC)	3/8" Flex*	12/3, 12/4, 10/2		
4010900AST with insulated throat and removable clip	04089	MC/HCF/AC Steel & Aluminum	.405 to .600	14/2	25	250
		MCI-A Steel & Aluminum	.405 to .580	14/3, 14/4,		
		AC90, ACG90	.460 to .550	12/2		
		Flexible Metal Conduit Steel & Aluminum (RWFMC)	3/8" Flex*	12/3, 12/4, 10/2		



38900ST



38900AST

CATALOG NUMBER	UPC/DCI/NAED MFG #01 8997	CABLE TYPE	DIAMETER RANGE	CABLE RANGE	UNIT PKG	STD PKG
38900ST	04098	MC/HCF/AC Steel & Aluminum	.405 to .605	14/2 and 12/2	25	250
		MCI-A Steel & Aluminum	.440 to .550	w/ and w/o ground		
		AC90, ACG90	.440 to .550	14/3, 14/4,		
		Flexible Metal Conduit Steel & Aluminum (RWFMC)	3/8" Flex*	12/3, 12/4, 10/2		
38900AST with insulated throat	04093	MC/HCF/AC Steel & Aluminum	.405 to .605	14/2 and 12/2	25	250
		MCI-A Steel & Aluminum	.440 to .550	w/ and w/o ground		
		AC90, ACG90	.440 to .550	14/3, 14/4,		
		Flexible Metal Conduit Steel & Aluminum (RWFMC)	3/8" Flex*	12/3, 12/4, 10/2		
40900ST Tinted red inside fitting	04099	MC/HCF/AC Steel & Aluminum	.485 to .610	14/3, 12/2 and 12/3	25	250
		MCI-A Steel & Aluminum	.480 to .580	w/ and w/o ground		
		AC90, ACG90	.480 to .550	14/4,		
		Flexible Metal Conduit Steel & Aluminum (RWFMC)	3/8" Flex*	12/4, 10/2, 10/3		
40900AST with insulated throat	04092	MC/HCF/AC Steel & Aluminum	.485 to .610	14/3, 12/2 and 12/3	25	250
		MCI-A Steel & Aluminum	.480 to .580	w/ and w/o ground		
		AC90, ACG90	.480 to .550	14/4,		
		Flexible Metal Conduit Steel & Aluminum (RWFMC)	3/8" Flex*	12/4, 10/2, 10/3		

*CSA Listed w/ anti-short bushing ONLY



Arlington

1 Stauffer Industrial Park
Scranton, PA 18517
800/233.4717
Fax 570/562.0646
www.aifittings.com



40900ST



40900AST

Patent pending

Distributed by