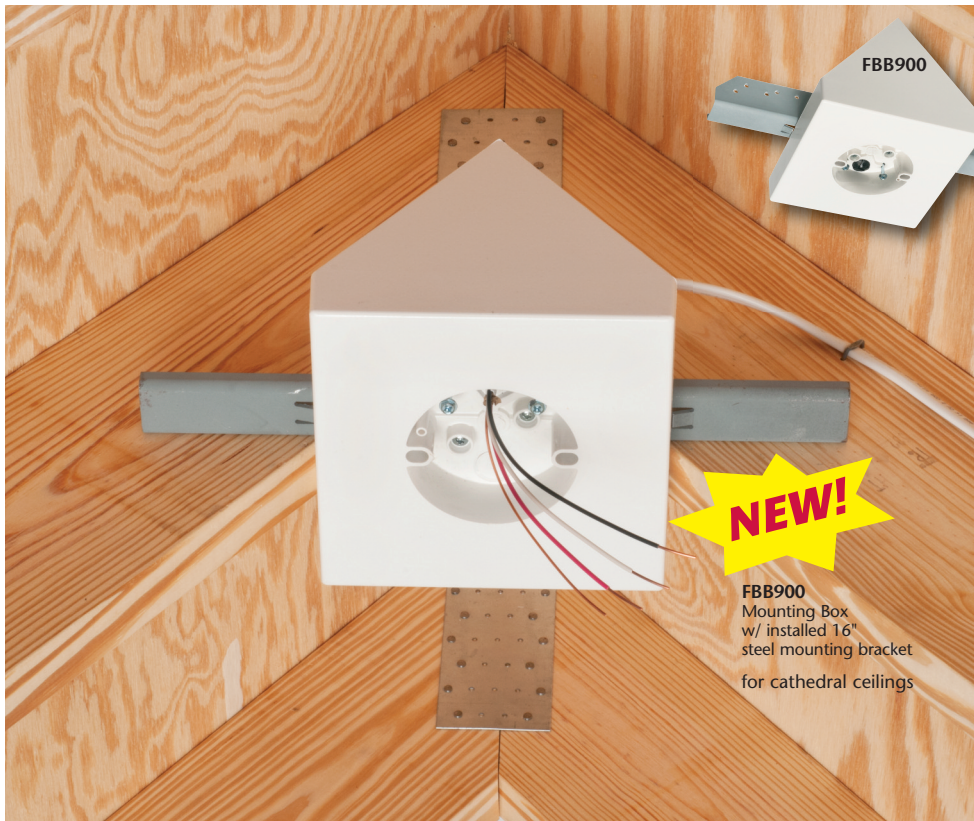


# Fan/Fixture Mounting Boxes

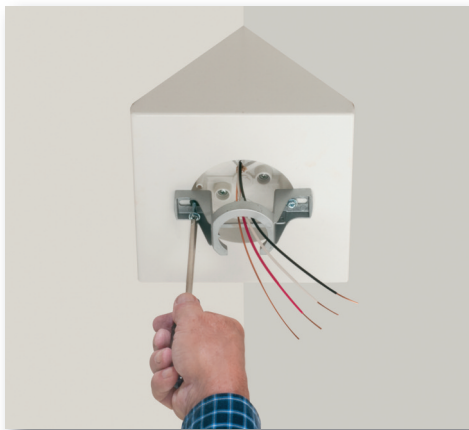
Made in USA 

**NEW!**  
more on  
reverse

*with Installed Steel Mounting Bracket • Save Time in New Construction*



**FBB900**  
Mounting Box  
w/ installed 16"  
steel mounting bracket  
for cathedral ceilings



**FBB900, FBB450**  
**INSTALLED STEEL BRACKET...**  
**THE SIMPLE WAY TO**  
**A GREAT FINISH!**



**FBB450**  
Mounting Box  
w/ installed 12"  
steel mounting bracket  
for sloped ceilings

Arlington's new fan/fixture Mounting Box is the quick, easy way to mount a fan or fixture on a cathedral or sloped ceiling.

FBB900 installs to a rafter for easy centering. Taller sides on the box allow it to fit cathedral ceilings with angles greater than 80°.



Also available FBB450 for sloped ceilings.

Both have installed steel mounting brackets that **save time and money** in new construction installations. *Forget the need to cut and attach a piece of wood to the box!* The installed bracket takes its place. For added convenience, the bracket is pre-drilled for screws and the ends are angled for easy fitting.

- Easy, secure installation
- No loose parts. Captive fan/fixture bracket installation screws. Installed NM cable connector and steel mounting bracket.
- 14.5 cubic inch box with 8" square mounting surface handles large fan canopies
- Paintable, textured finish
- **UL** ratings: 70 lb fan, 200 lb fixture  
**CSA** rating: 50 lb fan or fixture
- UL/CSA Listed



Patent pending



**Arlington**

1 Stauffer Industrial Park  
Scranton, PA 18517  
**800/233.4717**  
**Fax 570/562.0646**  
[www.aifittings.com](http://www.aifittings.com)

# Fan/Fixture Mounting Boxes

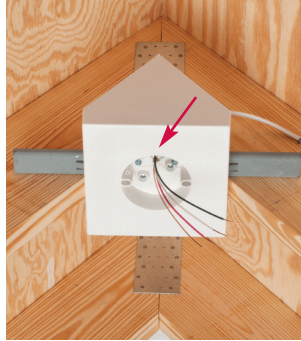


with Installed Steel Mounting Bracket for Cathedral and Sloped Ceilings

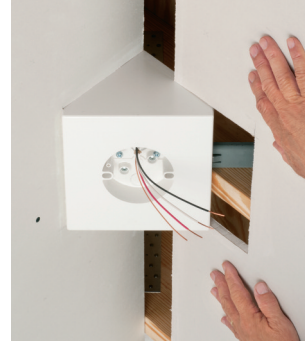
## Easy, centered installation on a cathedral ceiling in **New Construction**...



**Save time! NO need for a 2x4!** Mount steel bracket to angled rafters with short sides of box touching each rafter. Keep bottom of box level. Screw the bracket to the rafters with (4) supplied #10, 1-1/2" wood screws through the pre-drilled screw hole(s) in bracket.



Push cable through installed NM cable connector in box.



Install drywall ceiling.

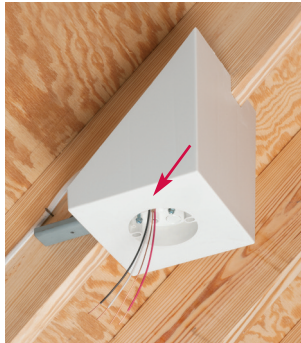


Done! Centered installation on cathedral ceiling

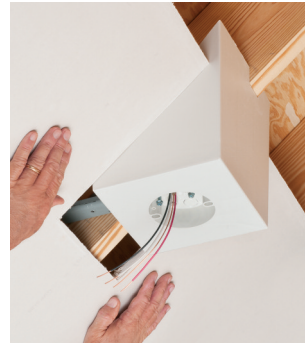
## for sloped ceilings in **New Construction**...



**NO need for a 2x8 or extra trimming!** Notch the box as necessary, keeping bottom of box level - with short side of box touching rafter. Screw the bracket to the rafter with (4) supplied #10, 1-1/2" wood screws through the pre-drilled screw hole(s) in bracket.



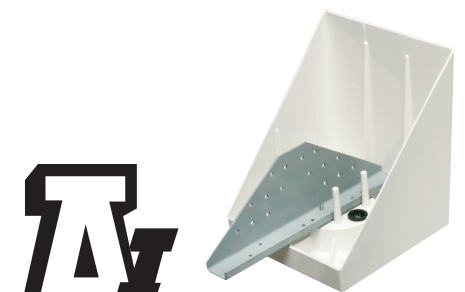
Push cable through installed NM cable connector in box.



Install drywall ceiling.



Installing fan bracket on installed box on sloped ceiling



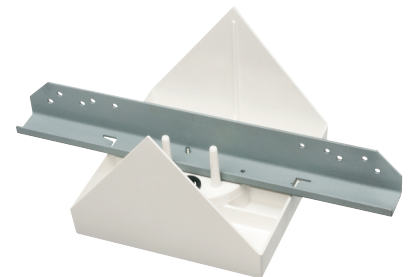
**FBB450**  
Ships with 12" steel bracket installed.



### 14.5 cubic inch Fan/Fixture Mounting Box for New Construction

Catalog Number	UPC/DEI/NAED Mfg. #018997	Description	Unit /Std Pkg
FBB900	11231	Fits cathedral ceilings with angle 80° or greater. Installed 16" steel mounting bracket.	1
FBB450	11230	Fits sloped ceilings up to 45°. Installed 12" steel mounting bracket.	1

Fan/fixture bracket installation screws ship captive. Four #10, 1-1/2" wood screws supplied - for attachment of steel mounting bracket to rafter(s).



**FBB900**  
16" steel bracket ships installed.



# Arlington

1 Stauffer Industrial Park  
Scranton, PA 18517  
800/233.4717  
Fax 570/562.0646  
www.aifittings.com



Distributed by

Patent pending

Made in USA