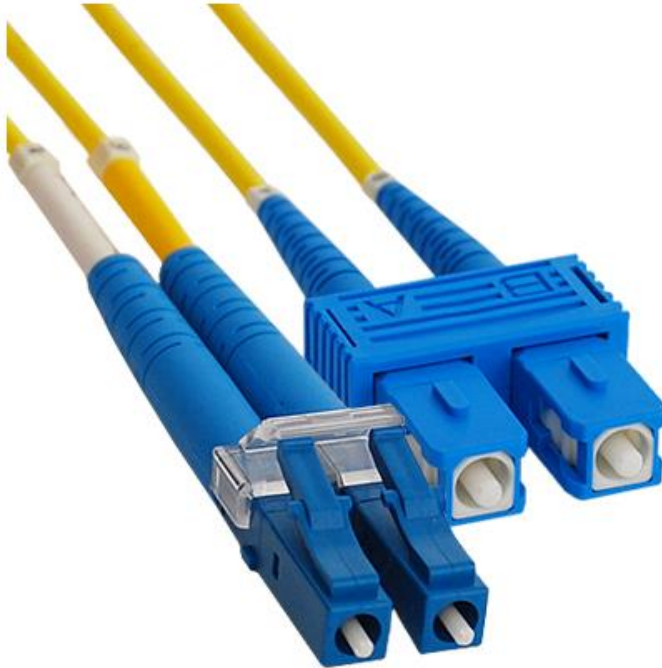


LC-SC 9/125 μ m OS1 Singlemode Duplex Fiber Optic Jumper

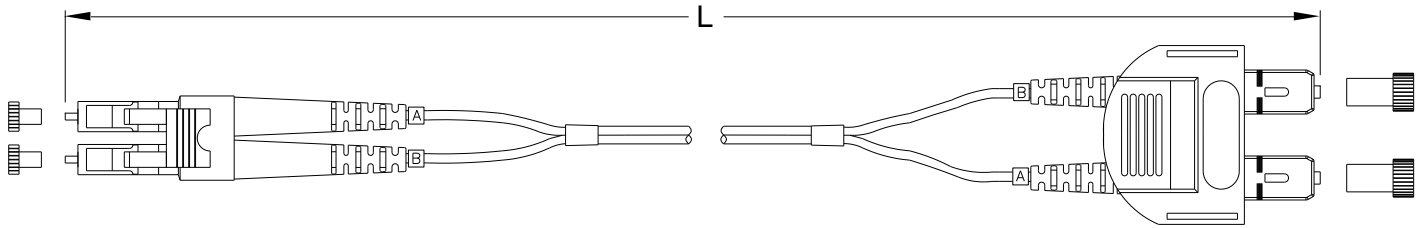


Package Includes

- A. LC-SC 9/125 μ m OS1 SM Duplex Fiber Jumper, 1 pc.
- B. Test Results Label, 1 pc.

Features and Benefits

- Made from OFNR riser rated cables, exceeding industry requirements
- Used with ICC fiber optic products
- Available in 1, 2, 3, 5, 7, and 10 meters
- Dust Cap included
- Test results included



NOTE: UNLESS OTHERWISE SPECIFIED

1. Cable:

- A. Color: Yellow
- B. Fiber Counts: 2 Fiber Zipcord
- C. Fiber Type: Singlemode 9/125 μ m
- D. Attenuation: 0.35/0.20 dB/km @ 1310/1550 nm
- E. Cable Data:
 - Cable diameter: .079 in (2.0mm)
 - Weight: 12 lbs./kft
 - Bend radius: 1.2" MIN
 - Loading: 135 lbs. MAX

ITEM NUMBER	L (LENGTH)
ICFOJ2M501	1 METER \pm 10 CM
ICFOJ2M502	2 METER \pm 10 CM
ICFOJ2M503	3 METER \pm 10 CM
ICFOJ2M505	5 METER \pm 10 CM
ICFOJ2M507	7 METER \pm 10 CM
ICFOJ2M510	10 METER \pm 10 CM

2. SC Connector:

- A. Ferrule: Zirconia
- B. Insertion Loss: 0.2 dB Typical, 0.3 dB MAX
- C. Return Loss: 55 dB
- D. UPC Polish

3. LC Connector:

- A. Ferrule: Zirconia
- B. Insertion Loss: 0.2 dB Typical, 0.3 dB MAX
- C. Return Loss: 55 dB
- D. UPC Polish

4. Compliance:

- A. ANSI/TIA-568-C.3

5. Length: XX: 01, 02, 03, 05, 07, & 10