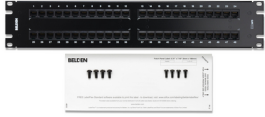




Product: [CAT 5E HD-110 PP 48 2U](#) 



CAT 5E HD-110 Patch Panel, 48 Port, 2U

Product Description

CAT5E HD-110 Patch Panel, 48-port, 2U

Technical Specifications

Product Overview

Suitable Applications:	IBDN System 1200, TIA Category 5e, ISO Class D, 1000BASE-T, 100BASE-T
------------------------	---

Physical Characteristics (Overall)

Height:	3.440 in
Width:	19.000 in
Depth:	1.35 in
Port Count:	48 Port
Front Connection:	Flush
Packaging:	Individually packaged in a cardboard box.
Weight:	1.700 lbs

Connectors

Materials

Description	Material
Panel	Steel

Construction and Dimensions

Max Capacity:	48 connectors (preloaded)
---------------	---------------------------

Electrical Characteristics

Dielectric Strength:	1,000 V RMS @ 60 Hz for 1 minute
Current Rating:	1.500 A
Insulation Resistance:	500 M-Ohm Minimum
Termination Resistance:	2.5 mOhm

Temperature Range

Installation Temperature Range:	-10°C To +60°C
Storage Temperature Range:	-40°C To +70°C
Operating Temperature Range:	-10°C To +60°C

Mechanical Characteristics

Footprint/Type:	HDPP
Tool Compatibility:	Gigaflex Connecting Tool (AX100749)
Plug /Jack Compatibility:	RJ45
Termination Type:	Universal T568A/B

Standards

Data Category:	Category 5e
TIA/EIA Compliance:	Category 5 - ISO/IEC 11801:2002 Ed.2
Other Standards:	FCC Part 68, Subpart F, IEC 60603-7

Applicable Environmental and Other Programs

Environmental Space:	Indoor
EU Directive 2011/65/EU (RoHS 2):	Yes
MII Order #39 (China RoHS):	EUP 50

Flammability, LSOH, Toxicity Testing

Safety Listing:	ACA, Bi-national Standard Listed
-----------------	----------------------------------

Related Part Numbers

Related Parts:	CAT5E Modular Cords
----------------	---------------------

Variants

Item #	Color	UPC
AX103259	Black	611589005777

Product Notes

Included Parts:	4 Screws (10x32); 4 Screws (12x24); 1 Printable LabelFlex Half-Sheet; 1 Installation Guide.
Notes:	For proper installation refer to Installation Guide PX100733 included with the product

History

Update and Revision:	Revision Number: 0.62 Revision Date: 05-10-2023
----------------------	---

© 2024 Belden, Inc

All Rights Reserved.

Although Belden makes every reasonable effort to ensure their accuracy at the time of this publication, information and specifications described here in are subject to error or omission and to change without notice, and the listing of such information and specifications does not ensure product availability.

Belden provides the information and specifications herein on an "ASIS" basis, with no representations or warranties, whether express, statutory or implied. In no event will Belden be liable for any damages (including consequential, indirect, incidental, special, punitive, or exemplary damages) whatsoever, even if Belden has been advised of the possibility of such damages, whether in an action under contract, negligence or any other theory, arising out of or in connection with the use, or inability to use, the information or specifications described herein.

All sales of Belden products are subject to Belden's standard terms and conditions of sale.

Belden believes this product to be in compliance with all applicable environmental programs as listed in the data sheet. The information provided is correct to the best of Belden's knowledge, information and belief at the date of its publication. This information is designed only as a general guide for the safe handling, storage, and any other operation of the product itself or the one that it becomes a part of. The Product Disclosure is not to be considered a warranty or quality specification. Regulatory information is for guidance purposes only. Product users are responsible for determining the applicability of legislation and regulations based on their individual usage of the product.