



Copper Solutions

CLARITY®



designed to be better.™

PREMIUM PERFORMANCE



Clarity products deliver premium end-to-end performance. Designed to work together as a system, the Clarity family components include RJ45 jacks, patch panels, workstation mounting accessories, and patch cords.

CLARITY

Our Clarity components offer unmatched premium system performance and reliability.

Doubled RU Space with High Density Solutions to Address the Challenge of Space Limitations	✓
ETL Verified Components for 3rd Party Verified Premium Performance	✓
50 Years of Innovation for Minimized Installation and Service Time	✓
Front or Rear Loading Jacks for Flexible Installation Scheduling	✓
Full Suite of Patch Panel Solutions to Match Aesthetics for an Integrated Legrand System	✓
Mixed Media Capabilities for a Dynamic, Expandable Network within an Existing Footprint	✓
TAA Compliant / Buy America to Meet Specific Project Requirements	✓
PoE Rated for 1.5+ Amps Per Circuit Trace with Arcing Erosion Mitigation to Support High Powered PoE up to 100W	✓
Patch Panels with Rear Cable Management to Protect the Integrity of Connections	Full Line
nCompass™ Warrantied Solutions Guarantee Premium Performance Headroom	Premium

HDJ Series Connectivity

High Density Jacks (HDJ) - Unshielded – Premium Solutions

(Rear Loading, Lacing Cap Termination)

Clarity High Density Jacks (HDJ) unshielded are available in CAT5E, CAT6 and CAT6A, featuring lacing cap termination with icon slot for port ID. Jacks are sold in carton of 20, or bulk pack of 25, termination tool is included with each carton.

Features:

- High density, up to 48 ports in 1RU
- Quicker installs and more efficient moves, adds and changes

The following Part Numbers are offered globally: HDJ5E-78, HDJ6-00, HDJ6-36, HDJ6-44, HDJ6-88, HDJ6A-00, HDJ6A-36, HDJ6A-44, HDJS625, HDJS6A25, HDJBL10-00

PART NO.	DESCRIPTION
HDJ6-XX	Clarity CAT6 High Density Jack, UTP, T568A/B
HDJ625-XX	Clarity CAT6 High Density Jack, UTP, T568A/B, 25 Pack
HDJ6A-XX	Clarity CAT6A High Density Jack, UTP, T568A/B
HDJ6A25-XX	Clarity CAT6A High Density Jack, UTP, T568A/B, 25 Pack
HDJTJA20	Clarity High Density Jack to TracJack Adapter, 20-Pack Fog White
HDJBL10-YY	Clarity High Density Jack 1-Port Blank, 10 Pack
PRTICON-XX	Color Coded Port ID Icon for HDJ, HDJS, KT2J, KS and KSFTP
HDJPCT-4PK	Plastic Crimp Termination Tool, Replacement Pack, 4 Pack

Note: Fiber Optic Modules also available – See Fiber Optic HDFM Adapter Panel (page 73)

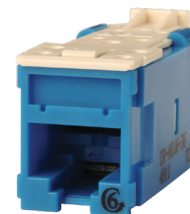
REMOVE -XX FOR FOG WHITE, FOR OTHER COLORS REPLACE XX WITH TAIL CODES FROM LIST BELOW

Standard	-00	-13	-27	-36	-42	-43	-44	-45	-78	-88	-99
Fog White	Black	Ivory	Violet	Blue	Red	Orange	Yellow	Green	Dark Gray	White	Wiremold Ivory

Standard quantities are packs of 20 (00, 36, 88 available in bulk packs of 25)

REMOVE -YY FOR FOG WHITE, FOR OTHER COLORS REPLACE YY WITH TAIL CODES FROM LIST BELOW

STANDARD	-00	-13	-78	-88
Fog White	Black	Ivory	Dark Gray	White



HDJ6-36

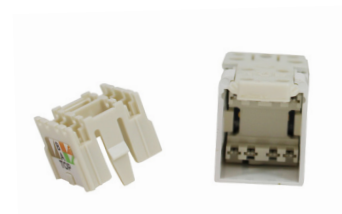


PRTICON



Top of HDJ and lacing cap

HDJPCT-4PK



Back of HDJ and lacing cap



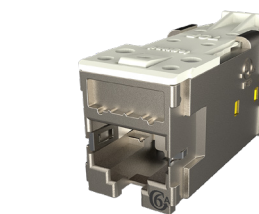
HDJ Series Connectivity

High Density Jacks (HDJS) – Shielded – Premium Solutions

(Rear Loading, Lacing Cap Termination)

Clarity High Density Jacks (HDJS) shielded are available in CAT6 and CAT6A, featuring lacing cap termination. Shielded HDJ modules accept colored icon inserts for high visibility port identification.

PART NO.	DESCRIPTION
HDJS6	Clarity Shielded CAT6 High Density Jack Plenum Rated
HDJS625	Clarity Shielded CAT6 High Density Jack Plenum Rated, 25 Pack
HDJS6A	Clarity Shielded CAT6A High Density Jack Plenum Rated
HDJS6A25	Clarity Shielded CAT6A High Density Jack Plenum Rated, 25 Pack
HDJBL10-YY	Clarity High Density Jack 1-Port Blank, 10 Pack



HDJS6A



HDJHDMI



HDJBL-00



HDJ21DCA



HDJ35ST

HDJ Multimedia Modules – Premium Solutions

Clarity High Density Jack multimedia modules create a quality solution for your unique installation requirements.

PART NO.	DESCRIPTION
HDJF-XX	HDJ F Connector, F/F 75 Ohm
HDJHDMI-XX	HDJ HDMI Connector, F/F
HDJBL10-XX	1-Port HDJ Blank, 10 Pack
HDJ21DCA-XX	HDJ Barrel Connector, Type A
HDJ35ST-XX	HDJ 3.5mm Stereo Jack, F/F, 180° Exit

NOTE: Remove -XX for Fog White, for other colors, replace XX with 00 (Black), 78 (Dark Gray), 88 (White).

HDJ Series Workstation Mounting

HDJ Workstation Face Plates & Frames – Premium Solutions

HDJ wall plates and frames are supplied with labeling fields and mounting hardware. Accepts rear-loading HDJ series jacks or modules.

PART NO.	DESCRIPTION
403HDJ11-XX	1-Port Face Plate, HDJ Jack, Single-Gang
403HDJ12-XX	2-Port Face Plate, HDJ Jack, Single-Gang
403HDJ13-XX	3-Port Face Plate, HDJ Jack, Single-Gang
403HDJ14-XX	4-Port Face Plate, HDJ Jack, Single-Gang
403HDJ16-XX	6-Port Face Plate, HDJ Jack, Single-Gang
403HDJ212-XX	12-Port Face Plate, HDJ Jack, Dual-Gang
403SHDJ11	1-Port Face Plate, HDJ Jack, Single-Gang Stainless Steel
403SHDJ12	2-Port Face Plate, HDJ Jack, Single-Gang Stainless Steel
403SHDJ13	3-Port Face Plate, HDJ Jack, Single-Gang Stainless Steel
403SHDJ14	4-Port Face Plate, HDJ Jack, Single-Gang Stainless Steel
403SHDJ16	6-Port Face Plate, HDJ Jack, Single-Gang Stainless Steel
403SHDJ28	8-Port Face Plate, HDJ Jack, Single-Gang Stainless Steel
403SHDJ212	12-Port Face Plate, HDJ Jack, Dual-Gang Stainless Steel
419HDJ2-XX	2-Port HDJ Rectangular Stylistics Frame
419HDJ4-XX	4-Port HDJ Rectangular Stylistics Frame
40300270	Single Gang Cover Plate with Label Fields
40300271	Double Gang Cover Plate with Label Fields

NOTE: Remove -XX for Fog White, for other colors, replace XX with 00 (Black), 13 (Ivory), 78 (Dark Gray), 88 (White), 99* (Wiremold Ivory). * MOQ required, contact customer service.



403HDJ16-88



419HDJ2

HDJ Surface Mount Boxes – Premium Solutions

Compatible with HDJ series jacks and modules. Label field, screws and double-sided adhesive tape are included for mounting onto almost any surface.

PART NO.	DESCRIPTION
404HDJ1-XX	1-Port HDJ Plastic Surface Mount Box, Plenum Rated
404HDJ2-XX	2-Port HDJ Plastic Surface Mount Box, Plenum Rated
404HDJ4-XX*	4-Port HDJ Plastic Surface Mount Box
404HDJ6-XX	6-Port HDJ Plastic Surface Mount Box

NOTE: Remove -XX for Fog White, for other colors, replace XX with 88 (White).
* Additional colors available, contact customer service for details



404HDJ1

HDJ Series Workstation Mounting

HDJ Bezels – Premium Solutions

HDJ Furniture plates and bezels accept HDJ series jacks or modules to enable mounting in Raceways, Floor Boxes, furniture and more.

PART NO.	DESCRIPTION
419HDJ2-XX	2-Port HDJ Rectangular Stylistics Frame
419HDJ4-XX	4-Port HDJ Rectangular Stylistics Frame
421HDJ-XX*	3-Port HDJ Furniture Adapter Plate, 40700071/72/73
421HDJ4-XX	4-Port HDJ Furniture Plate, TIA-569 Opening
AB2HDJ-XX	2-Port Bezel AB, HDJ, Fits WM RFB4 RT Series Brackets, 10-Pack
S21HDJ10-YY	1-Port HDJ, Series II, 1 Unit, 10 Pack Fog White
S22HDJ10-YY	2-Port HDJ, Series II, 1 Unit, 10 Pack Fog White
HDJTJA20	HDJ to TracJack Adapter, 20 Pack, Fog White

NOTE: Remove -XX for Fog White, for other colors, replace XX with 00 (Black), 78 (Dark Gray), 88 (White).

*Available in 13 (Ivory).

Remove -YY for Fog White; other colors replace YY with 00 (Black), 88 (White). Check with CS for MOQ on 13 (Ivory), 99 (Wiremold Ivory).



421HDJ4



HDJHCT

Tools

Crimp and termination tools to be used for Clarity HDJ Shielded and Unshielded Jacks. Plastic crimp termination tool is included with purchase of standard carton of HDJ jacks.

PART NO.	DESCRIPTION
HDJPCT-4PK	Plastic Crimp Termination Tool, Replacement Pack, 4 Pack
HDJHCT	Heavy Duty, Handled Crimp Termination Tool, Metal



HDJPCT-4PK

High Density Field Terminated Plugs

Field terminable PCB wired 8 position modular plugs, able to be terminated to either T568A or B wiring, designed for use with solid conductor cable.

PART NO.	DESCRIPTION
HDPUC6A-5PK	Unshielded CAT6A Field Terminated 8 Position Modular Plugs, 5 Pack
HDPUC65E-5PK	Unshielded CAT6/5E Field Terminated 8 Position Modular Plugs, 5 Pack
HDPSC6A-5PK	Shielded CAT6A Field Terminated 8 Position Modular Plugs, 5 Pack
HDPSC6A90-5PK	Shielded CAT6A 90-Degree Field Terminated 8 Position Modular Plugs, 5 Pack



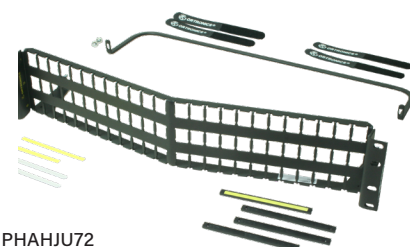
HDPUC6A-5PK

HDJ Series Patch Panels

HDJ Unshielded (UTP) Patch Panels – Premium Solutions

24, 48 and 72-port Clarity HDJ unloaded patch panels. Available in flat and angled. Accepts rear-loading HDJ series jacks or modules. Includes rear wire manager.

FLAT		ANGLED		DESCRIPTION
Black	White	Black	White	
PART NO.				
PHDHJU24	PHDHJU24-W	PHAHJU24	PHAHJU24-W	24-Port HDJ Unloaded Patch Panel, 1RU
PSDHJU48	PSDHJU48-W	PSAHJU48	PSAHJU48-W	48-Port Standard Density HDJ Unloaded Patch Panel, 2RU
PHDFMU48	-	-	-	48-Port HDJ Unloaded Fiber Panel Kit, with Label Bar, 1RU
PHDHJU48	PHDHJU48-W	PHAHJU48	PHAHJU48-W	48-Port HDJ Unloaded Patch Panel, 1RU
PHDHJU72	PHDHJU72-W	PHAHJU72	PHAHJU72-W	72-Port HDJ Unloaded Patch Panel, 2RU
HDCM001	-	-	-	Fiber Rear Cable Management Tray, 1RU, Management Spools Included



PHAHJU72



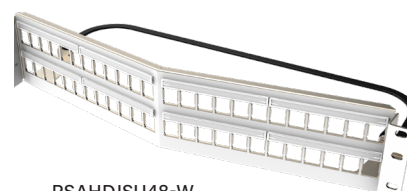
033683



033681



033685



PSAHJUSU48-W

LCS3 Panel System for High Density Jack

Front loading panel for HDJ, integrated cable management. Accepts HDJ (UTP), HDJS (FTP), HDFM, and HDJ AV connectors.

PART NO.	DESCRIPTION
PATCH PANELS	
033682	Standard Flat Patch Panel Empty (no Cassettes)
033683	24 Port Standard Density Flat Patch Panel with 6-port Cassettes, 1U
033684	48 Port High Density Flat Patch Panel with 12-port Cassettes, 1U
CASSETTES	
033680	Standard Density Cassette to Load with 6 HDJ Modules
033681	High Density Cassette to Load with 12 HDJ Modules
ACCESSORIES	
033685	Blanking Cassette, Occupies 1 Cassette Opening

NOTE: All panels and cassettes are sold unloaded, HDJ connectors sold separately

HDJ Shielded (FTP) Patch Panels – Premium Solutions

24 and 48-Port Clarity HDJ shielded, unloaded patch panels. Available in flat and angled, accepts HDJS series jacks. Jacks rear load into panel. Includes rear wire manager and ground lugs.

FLAT		ANGLED		DESCRIPTION
Black	White	Black	White	
PART NO.				
PHDHDJSU24	PHDHDJSU24-W	PHAHDJSU24	PHAHDJSU24-W	24-Port HDJ Shielded, Unloaded Patch Panel, 1RU
PHDHDJSU48	PHDHDJSU48-W	PHAHDJSU48	PHAHDJSU48-W	48-Port HDJ Shielded, Unloaded Patch Panel, 1RU
PSDHDJSU48	PSDHDJSU48-W	PSAHDJSU48	PSAHDJSU48-W	48-Port HDJ Shielded, Unloaded Patch Panel, 2RU

TracJack Series Connectivity

TracJack - Unshielded (UTP) – Premium Solutions

(Front Loading, 110-Type Termination)

Clarity TracJacks are a front loading solution designed for the workstation. Larger module size provides better visibility and more area to lace and terminate cables.

PART NO.	DESCRIPTION
TJ600-XX	TracJack CAT6 Universal A/B Wiring
TJ645-YY*	TracJack CAT6 45° Exit, Universal A/B Wiring
TJ6A-XX	TracJack CAT6A Universal A/B Wiring
HDJTJA20	Clarity High Density Jack to TracJack Adapter, 20-Pack Fog White

*Lead time may vary, contact customer service for up to date information.

REMOVE -XX FOR FOG WHITE, FOR OTHER COLORS REPLACE XX WITH TAIL CODES FROM LIST BELOW

STANDARD	-00	-13	-22	-23	-24	-25	-26	-27
Fog White	Black	Ivory	Light Red	Light Orange	Light Yellow	Light Green	Light Blue	Purple
-36	-42	-43	-44	-45	-68	-78	-88	-99
Blue	Red	Orange	Yellow	Green	Light Gray	Dark Gray	White	Wiremold Ivory

-22, -23, -24, -25, -26 available in Cat6 only.

REMOVE -YY FOR FOG WHITE, FOR OTHER COLORS REPLACE YY WITH TAIL CODES FROM LIST BELOW

STANDARD	-00	-13	-36	-42	-43	-44	-45	-88	-99
Fog White	Black	Ivory	Blue	Red	Orange	Yellow	Green	White	Wiremold Ivory

PART NO.	DESCRIPTION
42100002-XX	TracJack 1-Port Blank, 10 Pack

NOTE: Remove -XX for Fog White, for other colors, replace XX with 00 (Black), 13 (Ivory), 78 (Dark Gray), 88 (White), 99 (Wiremold Ivory).

*Available in 13 (Ivory).



TJ600



TJ645



42100002-88

TracJack Series Connectivity

TracJack - Shielded (FTP) – Premium Solutions

(Front Loading, 110-Type Termination)

Clarity Shielded TracJacks are a front loading solution designed for the workstation. Larger module size provides better visibility and more area to lace and terminate cables.

PART NO.	DESCRIPTION
TJS600	TracJack Shielded CAT6 180° Exit, Universal A/B Wiring
TJS6A	TracJack Shielded CAT6A 180° Exit, Universal A/B Wiring
42100002-XX	TracJack 1-Port Blank, 10 Pack

NOTE: Remove -XX for Fog White, for other colors, replace XX with 00 (Black), 13 (Ivory), 78 (Dark Gray), 88 (White), 99 (Wiremold Ivory).



TJS600

TracJack Multimedia Inserts – Premium Solutions

TracJack® footprint is front loading and supports a number of A/V and data modules. It's ideal for combining A/V with our high performance Clarity® workstation products. The TracJack footprint can also be used with Series II® through the use of an adapter bezel.

Fiber TracJack Modules are available on page 98.

PART NO.	DESCRIPTION
63730003-XX	TracJack CAT3, 8-Position, 110, T568A/B
63700005-XX	TracJack 6-Position, 6C, 110, USOC
63700006-YY	TracJack F Connector 75 ohm, F/F
63700023-XX	TracJack, BNC, Feedthru
63700069-XX	TracJack 3.5mm Stereo Jack Feedthru
63700087-XX	TracJack Recessed F Connector 75 ohm, F/F

NOTE: Remove -XX for Fog White, for other colors, replace XX with 00 (Black), 13 (Ivory), 26 (Light Blue), 68 (Light Gray), 78 (Dark Gray), 88 (White), 99 (Wiremold Ivory). Colors and lead times may vary, contact customer service.

Remove -YY for Fog White, replace YY with 78 (Dark Gray).
Colors and lead times may vary, contact customer service for availability.



63700006

TracJack Series Workstation Mounting

TracJack Plastic Face Plates – Premium Solutions

Face Plates accept front loading TracJack jacks and modules. Include label fields and mounting hardware.

PART NO.	DESCRIPTION
40300270-XX	Single-Gang Cover Plate with Label Fields
40300271-XX	Double-Gang Cover Plate with Label Fields
40300549-XX	1-Port TracJack Single-Gang Plastic Face Plate
40300548-XX	2-Port TracJack Single-Gang Plastic Face Plate
40300547-XX	3-Port TracJack Single-Gang Plastic Face Plate
40300546-XX	4-Port TracJack Single-Gang Plastic Face Plate
40300545-XX	6-Port TracJack Single-Gang Plastic Face Plate
40300555-XX*	6-Port TracJack Dual-Gang Plastic Face Plate
40300554-XX	8-Port TracJack Dual-Gang Plastic Face Plate
40300620-XX	12-Port TracJack Dual-Gang Plastic Face Plate



40300546-88

NOTE: Remove -XX for Fog White, for other colors, replace XX with 00 (Black), 13 (Ivory) 88 (White).

*Also available in 99 (Wiremold Ivory).

TracJack Stainless Steel Face Plates – Premium Solutions

Stainless steel face plates accept front loading TracJack series jacks and modules.

PART NO.	DESCRIPTION
403STJ11	1-Port TracJack Single-Gang Stainless Steel Face Plate
403STJ12	2-Port TracJack Single-Gang Stainless Steel Face Plate
403STJ13	3-Port TracJack Single-Gang Stainless Steel Face Plate
403STJ14	4-Port TracJack Single-Gang Stainless Steel Face Plate
403STJ16	6-Port TracJack Single-Gang Stainless Steel Face Plate
403STJ28	8-Port TracJack Single-Gang Stainless Steel Face Plate
403STJ212	12-Port TracJack Double-Gang Stainless Steel Face Plate
403STJ1WP	Wall Phone TJ Stainless Steel Face Plate



403STJ12

TracJack Workstation Surface Mount Boxes – Premium Solutions

Compatible with TracJack series jacks. Product dimensions are listed by length, width and height.

PART NO.	DESCRIPTION
404TJ1-XX	1-Port TracJack, Plenum Rated
404TJ2-XX	2-Port TracJacks, 2.59 in x 2.27 in x 1.20 in, Plenum Rated
404TJ2X2-XX	4-Port TracJacks, 4.0 in x 2.42 in x 1.16 in, Jacks Exit from Both Sides
404TJ4-XX	4-Port TracJacks, 4.80 in X 3.6 in X 1.16 in
404TJ6-XX	6-Port TracJacks, 7 in X 4.5 in X 1.16 in



404TJ2X2-88

NOTE: Remove -XX for Fog White, for other colors, replace XX with 00 (Black), 13 (Ivory) 88 (White).

TracJack Series Workstation Mounting

TracJack Workstation Bezels – Premium Solutions

Legrand offers TracJack bezels for most furniture systems. Bezels easily snap mount into furniture, requiring no special tools. Bezels are ruggedly constructed from high impact thermo-plastic 94V-0 rated.

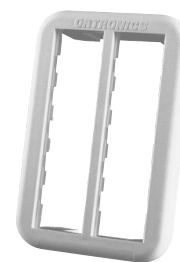
PART NO.	DESCRIPTION
40300270-XX	Single-Gang Cover Plate with Label Fields
40300271-XX	Double-Gang Cover Plate with Label Fields
40300575-XX	Holds (6) TracJacks, Fits Herman Miller Baseline Furniture Openings 1.89 in x 2.99 in (+.015) for .063 in Thick Material
40300576	Holds (6) TracJacks, Fits Herman Miller Beltline Furniture Openings 2.35 in x 3.41 in (+.015) for .125 in Thick Material, Fog White
40300577	Holds (4) TracJacks, Fits Herman Miller Beltline Furniture Openings 2.35 in x 3.41 in (+.015) for .125 in Thick Material, Fog White
40300577-00	Holds (4) TracJacks, Fits Herman Miller Beltline Furniture Openings 2.35 in x 3.41 in (+.015) for .125 in Thick Material, Black
40300633-XX	Holds (4) TracJacks, Two-piece Base and Cover, Adjustable to Fit a Range of Common Furniture Openings 2.67 in–2.75 in x 1.34 in–1.41 in for .065 in Thick Material
40800017-XX	106 Baseplate, Holds (2) TracJacks
40800019-XX	106 Baseplate, Holds (4) TracJacks
41900017-XX	Stylish TracJack Frame, Single gang 3-Port cover, 2.75 in x 4.5 in
41900018-XX*	Stylish TracJack Frame, Single gang 4-Port cover, 4.5 in x 4.5 in
421TJ3.5-XX	3-Port TracJack Furniture Plate, TIA-569 Opening
42100009-XX	3-Port Adapter Plate, Front Loadable
42100054-XX	3-Port Adapter Plate, Rear Loadable, 5 Pack

Products below must be used with 42100009 or 42100054

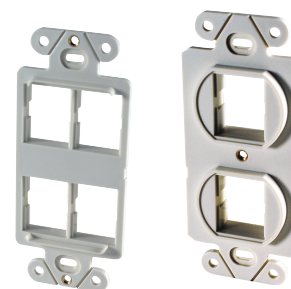
40700071	0.125 in Deep Bezel Mounts Adapter Plate to 2.71 in x 1.38 in (+0.035) Opening
40700072	0.625 in Deep Bezel Mounts Adapter Plate to 2.71 in x 1.38 in (+0.035) Opening
40700073	1.0 in Deep Bezel Mounts Adapter Plate to 2.71 in x 1.38 in (+0.035) Opening

NOTE: Remove -XX for Fog White, for other colors, replace XX with 00 (Black), 88 (White).

*Also available in 99 (Wiremold Ivory).



40300575-88



41900018-88

40800017-88



40700072-88

Patch Panels

CAT5E with 6-port Modules – Premium Solutions

12, 24, 48, and 96-port patch panels are available in the traditional multi-port panel format with 6-port modules for CAT5E performance. Large termination bay allows for high visibility and more space for wiring during terminations. Includes rear wire manager.

FLAT		ANGLED		DESCRIPTION
Black	White	Black	White	
PART NO.				
PSD5E6U12	-	-	-	12-Port CAT5E Patch Panel – Universal Wired T568A/B, 1RU
PHD5E6U24	PHD5E6U24-W	PHA5E6U24	PHA5E6U24-W	24-Port CAT5E Patch Panel – Universal Wired T568A/B, 1RU
PHD5E6U48	PHD5E6U48-W	PHA5E6U48	PHA5E6U48-W	48-Port CAT5E Patch Panel – Universal Wired T568A/B, 2RU
PSD5E6U24	-	-	-	24-Port CAT5E Patch Panel – Universal Wired T568A/B, 2RU
PSD5E6U48	-	-	-	48-Port CAT5E Patch Panel – Universal Wired T568A/B, 4RU
PHD5E6U96	-	-	-	96-Port CAT5E Patch Panel – Universal Wired T568A/B, 4RU



PHA5E6U48-W

CAT6 with 6-port Modules – Premium Solutions

12, 24, 48, 96-port patch panels are available in the traditional multi-port panel format with 6-port modules for CAT6. Large termination bay allows for high visibility and more space for wiring during terminations. Includes rear wire manager.

FLAT		ANGLED		DESCRIPTION
Black	White	Black	White	
PART NO.				
PSD66U12	-	-	-	12-Port CAT6 Patch Panel – Universal Wired T568A/B, 1RU
PSD66U24	-	-	-	24-Port CAT6 Patch Panel – Universal Wired T568A/B, 2RU
PHD66U24	PHD66U24-W	PHA66U24	PHA66U24-W	24-Port CAT6 Patch Panel – Universal Wired T568A/B, 1RU
PSD66U24HM	-	-	-	24-Port CAT6 Hinged Patch Panel – Universal Wired T568A/B, 2RU
PHD66U24HM	-	-	-	24-Port CAT6 Hinged Patch Panel – Universal Wired T568A/B, 1RU
PSD66U48	-	-	-	48-Port CAT6 Patch Panel – Universal Wired T568A/B, 4RU
PHD66U48	PHD66U48-W	PHA66U48	PHA66U48-W	48-Port CAT6 Patch Panel – Universal Wired T568A/B, 2RU
PSD66U48HM	-	-	-	48-Port CAT6 Hinged Patch Panel – Universal Wired T568A/B, 4RU
PHD66U48HM	-	-	-	48-Port CAT6 Hinged Patch Panel – Universal Wired T568A/B, 2RU
PHD66U96	-	-	-	96-Port CAT6 Patch Panel – Universal Wired T568A/B, 4RU



PHD66U24

Patch Panels

CAT6A with 6-port Modules – Premium Solutions

24 and 48-port patch panels are available in the traditional multi-port panel format with 6-port modules for CAT6A. Large termination bay allows for high visibility and more space for wiring during terminations. Includes rear wire manager.

FLAT		ANGLED		DESCRIPTION
Black	White	Black	White	
PART NO.				
PHD6AU24	PHD6AU24-W	PHA6AU24	PHA6AU24-W	24-Port CAT6A Patch Panel – Universal Wired T568A/B, 1RU
PHD6AU48	PHD6AU48-W	PHA6AU48	PHA6AU48-W	48-Port CAT6A Patch Panel – Universal Wired T568A/B, 2RU



PHA6AU24-W

Patch Cords

Clarity Patch Cords - Premium Solutions

Clarity patch cords feature stranded conductors, combining performance with flexibility for simple cable management.

PART NO.	PATCH CORD	SHIELDED PATCH CORD	28 AWG REDUCED DIAMETER
CAT6	MC6YY-XX	MCS6YY-XX	RDC6YY-XX
CAT6A	MC6AYY-XX	MCS6AYY-XX	RDC610YY-XX



CLARITY PATCH CORD LENGTHS AND COLOR OPTIONS

Length Suffix

Replace YY with length suffix below

01=1 ft 02=2 ft 03=3 ft 04=4 ft 05=5 ft 06=6 ft 07=7 ft 08=8 ft 09=9 ft
 10=10 ft 11=11 ft 12=12 ft 13=13 ft 14=14 ft 15=15 ft 20=20 ft 25=25 ft

Color Suffix

Remove -XX for Fog White, for other colors replace XX with color suffix below

-00	-02	-03	-04	-05	-06	-07	-08	-09	-11
Black	Red	Orange	Yellow	Green	Blue	Violet	Gray	White	Pink

Powerwise Pre-Terminated Assemblies - Premium Solutions

Built with Superior Essex PowerWise® 1G 4PPoE cable, these assemblies provide the best performance and overall value for 4 Pair Power over Ethernet (4PPoE) applications requiring up to 100W of power and up to 1 Gigabit Ethernet performance. PowerWise 1G 4PPoE assemblies are specifically designed to mitigate temperature build-up, offer exceptional energy efficiency and ensure performance (up to 1 Gigabit Ethernet) over the lifetime of your system.

RJ45 TO RJ45	RJ45 TO BLUNT	DESCRIPTION
PW5EPYYDB-XX	PW5EPYYSB-XX	CAT5E 1G Solid Cable Assemblies - Plenum
PW5ERYYYDB-XX	PW5ERYYSB-XX	CAT5E 1G Solid Cable Assemblies - Riser



POWERWISE LENGTH AND COLOR CHOICES

Replace YY with length suffix and XX with color suffix below

Length Suffix				Color Suffix			
03=3 ft	05=5 ft	10=10 ft	15=15 ft	-00	-06	-07	-09
20=20 ft	25=25 ft	30=30 ft	35=35 ft				
40=40 ft	45=45 ft	50=50 ft	60=60 ft	Blue	Blue	Violet	White
70=70 ft	80=80 ft	90=90 ft	100=100 ft				

EZ Patch Cords

The EZ Patch Box Solution is a revolutionary way to dispense and manage patch cords, reducing installation time and waste. There are no bags to open, tie wraps to undo or straightening necessary—the cords dispense one after another, ready to install. With EZ Patch, staging areas are clean, neat, and completely organized.

EZC aa bb Q xx - yy

aa 5E = CAT 5E 6 = CAT 6 6A = CAT6A	bb Length: see charts	xx # of cords: see charts	yy Color: see note below charts
---	---------------------------------	-------------------------------------	---

Cat6

Length "bb" Ranges	QTY "xx"
"01" to "02" = 1-2 FT	100
"03" to "07" = 3-7 FT	50
"08" to "12" = 8-12 FT	40
"13" to "15" = 13-15 FT	25

For quantity greater than 99 add an extra digit to part # (EX. Q100 = Quantity 100).
 For color options replace "YY" suffix: -11 = Pink, -09 = White, -08 = Gray, -07 = Purple, -06 = Blue, -05 = Green, -04 = Yellow, -03 = Orange, -02 = Red, -00 = Black
 Contact Customer Service for availability

Cat6A

Length "bb" Ranges	QTY "xx"
"01" to "02" = 1-2 FT	75
"03" to "05" = 3-5 FT	50
"06" to "07" = 6-7 FT	40
"08" to "11" = 8-11 FT	30
"12" to "13" = 12-13 FT	25
"14" to "15" = 14-15 FT	20

For color options replace "YY" suffix: -09 = White, -07 = Purple, -06 = Blue, -05 = Green, -02 = Red, -00 = Black
 Contact Customer Service for availability



EZRD aa bb Q xx - yy

aa 6 = CAT 6	bb Length: see charts	xx # of cords: see charts	yy 04 = Yellow 08 = Gray 06 = Blue 09 = White
------------------------	---------------------------------	-------------------------------------	---

LENGTH & QUANTITY

Length "bb" Ranges	QTY "xx"
"01" to "03" = 1-3 FT	100
"04" to "05" = 4-5 FT	90
"06" to "07" = 6-7 FT	80
"08" to "10" = 8-10 FT	70
"11" to "20" = 11-20 FT	50

Standard configurations shown. Note: For quantity greater than 99 add an extra digit to part # (EX. Q100 = Quantity 100).



EZ Patch Cords

EZ Patch Flat Pack Clarity 28AWG Reduced Diameter (RDC) UTP CAT6 Patch Cords (EZFPR6) – Premium Solutions

The EZ Patch Flat Pack is an innovative addition to the EZ Patch series, allowing a 12 or 24-pack of cords to be distributed from flat plastic packaging, which is ideal for patch panel applications. The reduced diameter is ideal for high density data center applications. The smaller cable surface area allows for increased airflow and a smaller bend radius, which makes it easy to route through cable management panels.

PART NO.	DESCRIPTION
EZFPR603Q12-XX	3 ft CAT6 EZ Patch Flat Pack Reduced Diameter, 12-Pack
EZFPR605Q12-XX	5 ft CAT6 EZ Patch Flat Pack Reduced Diameter, 12-Pack
EZFPR607Q12-XX	7 ft CAT6 EZ Patch Flat Pack Reduced Diameter, 12-Pack
EZFPR609Q12-XX	9 ft CAT6 EZ Patch Flat Pack Reduced Diameter, 12-Pack

NOTE: For standard colors replace XX with 00 (Black), 06 (Blue), 08 (Gray), 09 (White).



EZFPR609Q12-06



EZFPR605Q12-08



EZFPR6A05Q12-00

EZ Patch Flat Pack Clarity 28AWG Reduced Diameter (RDC) UTP CAT6A Patch Cords (EZFPR6A) – Premium Solutions

PART NO.	DESCRIPTION
EZFPR6A03Q12-XX	3 ft CAT6A EZ Patch Flat Pack Reduced Diameter, 12-Pack
EZFPR6A05Q12-XX	5 ft CAT6A EZ Patch Flat Pack Reduced Diameter, 12-Pack
EZFPR6A07Q12-XX	7 ft CAT6A EZ Patch Flat Pack Reduced Diameter, 12-Pack
EZFPR6A09Q12-XX	9 ft CAT6A EZ Patch Flat Pack Reduced Diameter, 12-Pack

NOTE: For standard colors replace XX with 00 (Black), 06 (Blue), 08 (Gray), 09 (White).

EZ Patch Flat Pack Clarity UTP CAT6 Patch Cords (EZFPM6) – Premium Solutions

PART NO.	DESCRIPTION
EZFPM603Q12-XX	3ft CAT6 EZ Patch Flat Pack, Clarity, 12-Pack
EZFPM605Q12-XX	5ft CAT6 EZ Patch Flat Pack, Clarity, 12-Pack
EZFPM607Q12-XX	7ft CAT6 EZ Patch Flat Pack, Clarity, 12-Pack
EZFPM609Q12-XX	9ft CAT6 EZ Patch Flat Pack, Clarity, 12-Pack

NOTE: For standard colors replace XX with 00 (Black), 02 (Red), 03 (Orange), 04 (Yellow), 05 (Green), 06 (Blue), 07 (Violet), 08 (Gray), 09 (White).



EZFPR605Q12-06

EZ Patch Flat Pack Clarity UTP CAT6A Patch Cords (EZFPM6A) – Premium Solutions

PART NO.	DESCRIPTION
EZFPM6A03Q12-XX	3 ft CAT6A EZ Patch Flat Pack, Clarity, 12-Pack
EZFPM6A05Q12-XX	5 ft CAT6A EZ Patch Flat Pack, Clarity, 12-Pack
EZFPM6A07Q12-XX	7 ft CAT6A EZ Patch Flat Pack, Clarity, 12-Pack
EZFPM6A09Q12-XX	9 ft CAT6A EZ Patch Flat Pack, Clarity, 12-Pack

NOTE: For standard colors replace XX with 00 (Black), 02 (Red), 03 (Orange), 04 (Yellow), 05 (Green), 06 (Blue), 07 (Violet), 08 (Gray), 09 (White).



EZFPR605Q12-09



Data Communications
60 Woodlawn Street
West Hartford, CT 06110
800.934.5432
legrand.us