

SNE SERIES

the most advanced security cabinet



a wide range of sizes
to choose from

lockable & flush
mount side panels

doors accommodate
industry standard
electronic locks



thermal
options

Built for unconditioned
or conditioned
environments with
active or passive
ventilation.



efficient
mounting

Lever Lock™ system
compatible: mount
small devices in
unused spaces.

Adaptable equipment
mounting w/ threaded
rail, cage nut rail or
innovative adapter for
both.



flexible
cabling

Versatile cable
management and
routing included.



seismic
certified

Exceeds 1,000 lbs.
seismic certified with
anchors for concrete
floors or seismic
riser bases for raised
floors, which are
raised-floor ready.

looking to
customize?



Design an SNE cabinet
to your specifications
in the online
Configurator at
middleatlantic.com.

Add the options and
accessories that work
best for you, including
Configurator-exclusive
options like plexiglass
doors.

SNE SERIES

the most advanced security cabinet

for both digital
and analog
systems

The SNE Series is the most advanced security rack enclosure available. This purpose-built series was designed to meet the specific requirements of IP, analog and hybrid security systems.

Four available configurations fit your system type, wiring needs, cooling requirements and rack location.

pre-configured
with



vented front
door



split rear door:
vented, solid, or
active ventilation



cabinet top:
chimney, solid,
or with fans



flush mount side
panels



Lever Lock™
ready brackets



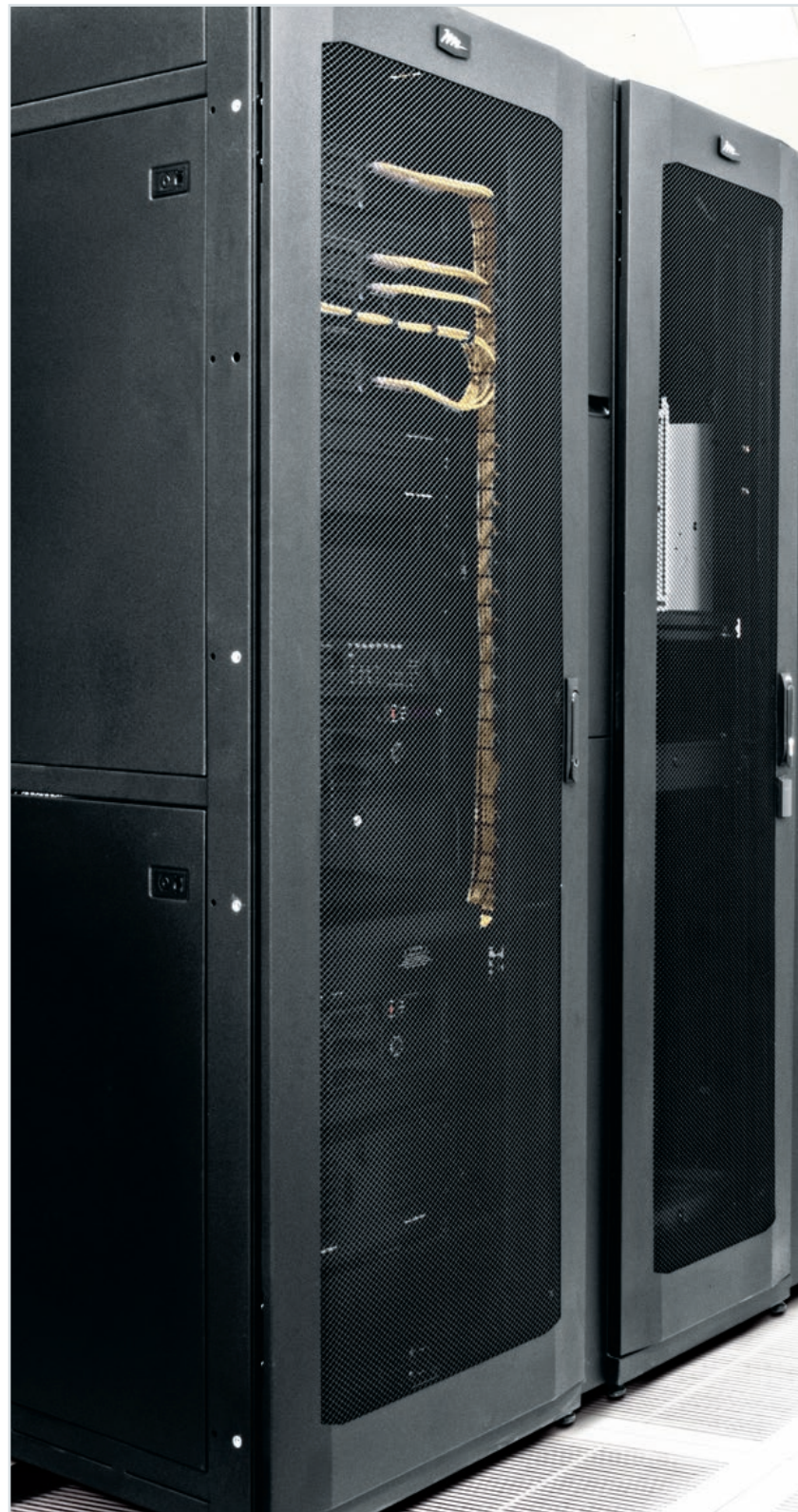
casters and
leveling feet

looking to
customize?



Design an SNE cabinet to your specifications in the online Configurator at middleatlantic.com.

Add the options and accessories that work best for you, including Configurator-exclusive options like plexiglass doors.



step 1

choose your requirements

hybrid

or

digital

optimized for active ventilation:

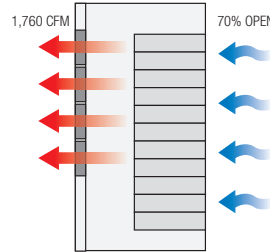
ideal for systems utilizing digital and analog equipment and for use in equipment rooms.

optimized for passive ventilation:

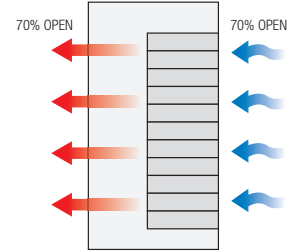
ideal for systems utilizing digital (IP) equipment and for use in data centers.

step 2

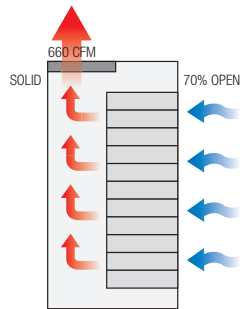
select your thermal



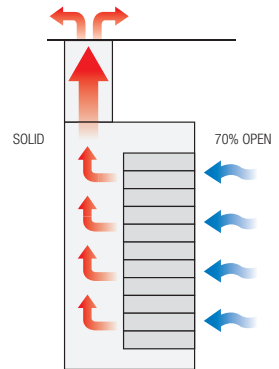
hybrid with rear active ventilation



digital with front to rear passive ventilation



hybrid with top active ventilation



digital with passive chimney ventilation

step 3

customize with cable management solutions



split lift-off cable chase



front air dam Zero-U panel mount



bracket for top cable pass-through between enclosures



internal vertical cable manager



internal cable duct includes covers



end cable chase secures items at the end of the rack bay



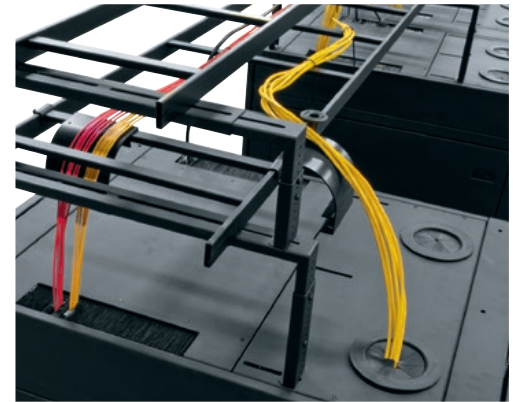
Lever Lock™ mounting brackets and accessories



6" wide wire type vertical lace

Overall Height (w/ casters)	Hybrid or Digital	Ventilation	24" Width			27.6" Width			30" Width		
			36" Depth	42" Depth	48" Depth	36" Depth	42" Depth	48" Depth	36" Depth	42" Depth	48" Depth
48" (24 space)	Hybrid	top active	SNE24H-2436-A1	SNE24H-2442-A1	–	–	–	–	–	–	–
	Hybrid	rear active	SNE24H-2436-A2	SNE24H-2442-A2	–	–	–	–	–	–	–
	Digital	front to rear passive	SNE24D-2436-P1	SNE24D-2442-P1	–	–	–	–	–	–	–
79-1/2" (42 space)	Hybrid	top active	SNE24H-4236-A1	SNE24H-4242-A1	–	SNE27H-4236-A1	SNE27H-4242-A1	–	SNE30H-4236-A1	SNE30H-4242-A1	–
	Hybrid	rear active	SNE24H-4236-A2	SNE24H-4242-A2	–	SNE27H-4236-A2	SNE27H-4242-A2	–	SNE30H-4236-A2	SNE30H-4242-A2	–
	Digital	front to rear passive	SNE24D-4236-P1	SNE24D-4242-P1	SNE24D-4248-P1	SNE27D-4236-P1	SNE27D-4242-P1	SNE27D-4248-P1	SNE30D-4236-P1	SNE30D-4242-P1	SNE30D-4248-P1
	Digital	passive chimney	–	SNE24D-4242-P2	SNE24D-4248-P2	–	SNE27D-4242-P2	SNE27D-4248-P2	–	SNE30D-4242-P2	SNE30D-4248-P2
84-3/4" (45 space)	Hybrid	top active	SNE24H-4536-A1	SNE24H-4542-A1	–	SNE27H-4536-A1	SNE27H-4542-A1	–	SNE30H-4536-A1	SNE30H-4542-A1	–
	Hybrid	rear active	SNE24H-4536-A2	SNE24H-4542-A2	–	SNE27H-4536-A2	SNE27H-4542-A2	–	SNE30H-4536-A2	SNE30H-4542-A2	–
	Digital	front to rear passive	SNE24D-4536-P1	SNE24D-4542-P1	SNE24D-4548-P1	SNE27D-4536-P1	SNE27D-4542-P1	SNE27D-4548-P1	SNE30D-4536-P1	SNE30D-4542-P1	SNE30D-4548-P1
	Digital	passive chimney	–	SNE24D-4542-P2	SNE24D-4548-P2	–	SNE27D-4542-P2	SNE27D-4548-P2	–	SNE30D-4542-P2	SNE30D-4548-P2

Options	Height	Width	Fits			
			36" Deep	42" Deep	48" Deep	All Depths
Cable Chase Lift-Off (Front & Back Only)	42 space	all				SNE-CC-42FB
	45 space					SNE-CC-45FB
Cable Chase Top Only	42 space	all	SNE-CC-36LT	SNE-CC-42LT	SNE-CC-48LT	
	45 space		SNE-CC-36LT	SNE-CC-42LT	SNE-CC-48LT	
Cable Chase For End Bay	45 space	all	SNE-CCE12-4536	SNE-CCE12-4542	SNE-CCE12-4548	
Front-Air Dam/Zero-U Panel Mount	42 space	27.6"				SNE27-FAD-PM-42
		30"				SNE30-FAD-PM-42
	45 space	27.6"				SNE27-FAD-PM-45
		30"				SNE30-FAD-PM-45
Internal Vertical Cable Duct with Covers	42 space	30"				1 Piece 1 Piece (assembly only)
	45 space					SNE-42DUCT-4X6 SNE-42DUCT-4X6-U
Bracket for Top Cable Pass-Through	all	all	SNE-TCB-36	SNE-TCB-42	SNE-TCB-48	
			SNE-45DUCT-4X6	SNE-45DUCT-4X6-U		
Lever Lock™ Mounting Bracket	all	all	LL-SNE-36BKT	LL-SNE-42BKT	LL-SNE-48BKT	
Lever Lock™ Accessories	all	all				Vertical Angle Vertical Channel Vertical 10" Plate Vertical DIN Rail
6" Wide Vertical Wire Grid Lace	24 space	all				LACE-WB6-24
	42 space					LACE-WB6-42
	45 space					LACE-WB6-45
Internal Vertical Cable Manager	24 space	all				SNE-IVCMF-24
	42 space					SNE-IVCMF-42
	45 space					SNE-IVCMF-45
Seismic Anchoring Brackets	all	24"				SNE24-Z4
		27.6"				SNE27-Z4
		30"				SNE30-Z4



corporate headquarters
 300 Fairfield Road, Fairfield, NJ 07004, U.S.A.
 Voice: 800-266-7225 • Fax: 800-392-3955
 International Voice: +1 973 839-1011
 International Fax: +1 973 831-4982
 middleatlantic.com

canada
 113 Iber Road, Ottawa, Ontario K2S 1E7
 Voice: 888-766-9770 • Fax: 888-599-5009
 middleatlantic.ca

factory distribution
 USA: New Jersey · California · Illinois
 Canada: Ontario
 The Netherlands: Eindhoven

See Website for additional Options	Riser Bases	Seismic Riser Bases	Raised Floor Angles
------------------------------------	-------------	---------------------	---------------------

