

ORTRONICS

Mighty Mo 20 Rack Solution

DESIGNED TO MAXIMIZE YOUR
NETWORK PERFORMANCE

 legrand®

Runway or Cable Tray mounting brackets are available in 2 heights for the top of the racks that allow pathways to be run 2" or 6" above the channels of the racks.

The MM20 vertical managers include a base "web" so the finger openings start 2" out from the mounting rails. This provides the proper bend radii for patch cords at the switch modules or patch panels. Bend limiters and slack storage spools are included to provide increased protection for fiber jumpers and cables.

The hex pattern in the channels allow cables to transition from the inside of the channels to the outside and provide mounting for the Universal Cable Trough.

PDU mounting brackets allow vertical power distribution to be mounted to the sides and rear of the channels and also to the rear of the vertical managers cage.

The front profile of the door is not just cosmetic. The Legrand Industrial Design Team's ergonomic design provides a comfortable grip while squeezing the full-length handle.

The integrated top trough waterfall provides top rack patch cable management without using up rack space.

MM20 doors have a "slam latch" mechanism so that the latch does not need to be manually closed when shutting the doors. They easily open and close in both directions and are removable yet secure when shut.

Removable feet supplied for under the bottom door pivot plate keep the door functioning properly even if someone "accidentally" stands on the plate.



The MM20 does not use double-sided vertical patch cord managers. The wide rear channels with hex pattern provide stability and protection for horizontal distribution cables and fiber trunks.

“Three-Point Stabilization” Cable termination at the panel and fixing in two places in the channel provide performance protection that can not be achieved with a rear patch cord manager.

The Mighty Mo 20 channels work seamlessly with the rear fiber management on Legrand Fiber Enclosures.

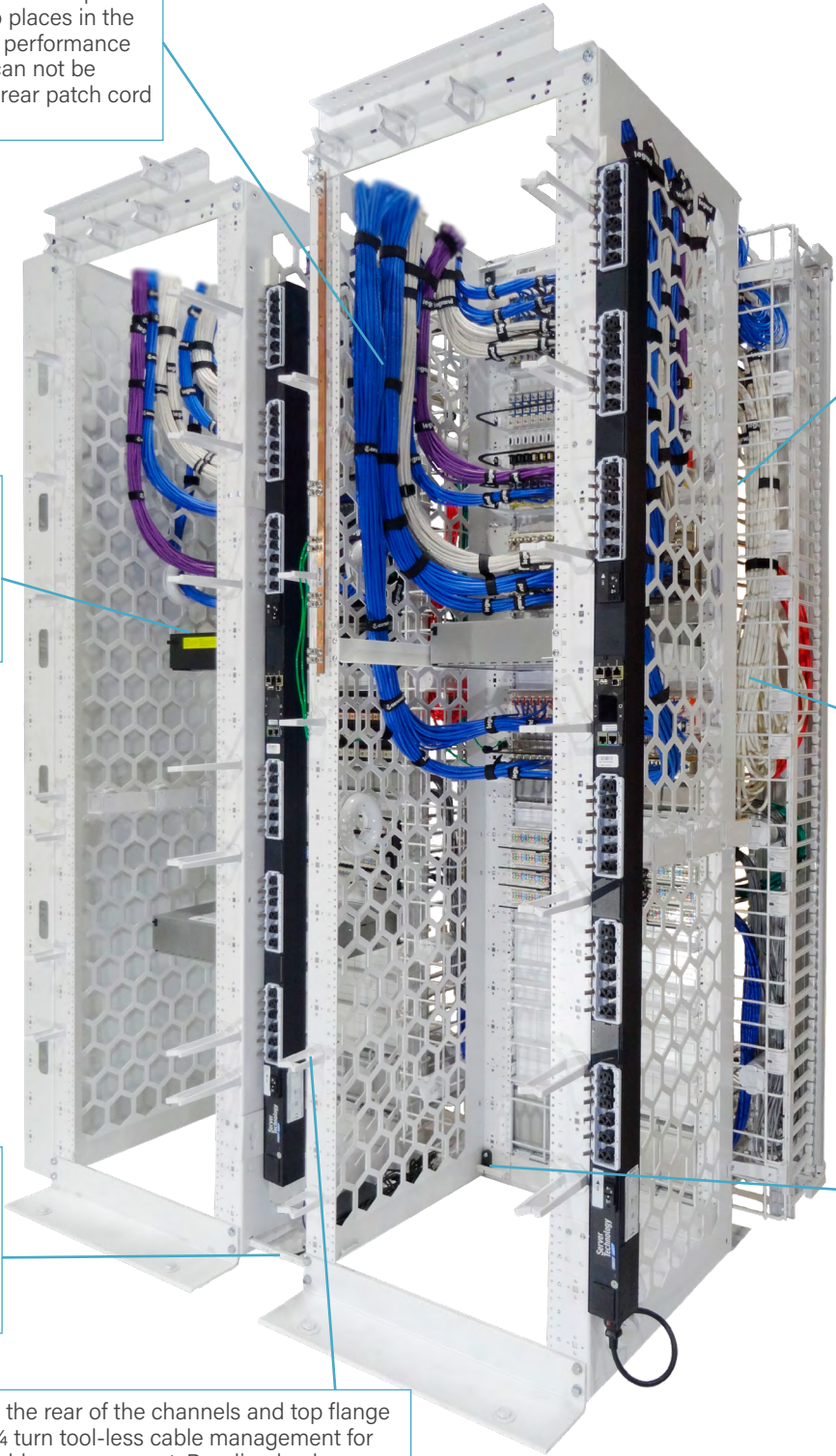
Spacer bars are included with each rack allowing the rack to be positioned ahead of installing the vertical managers.

Accessory holes on the rear of the channels and top flange allow mounting of ¼ turn tool-less cable management for security or power cable management. Bonding busbars can be mounted in this area without using rack unit space.

Mighty Mo racks have a deep channel and space between the rear of the racks which provide an open area for mounting large vertical PDU's and easily managing the power cables while keeping them separated from the network cables to eliminate interference.

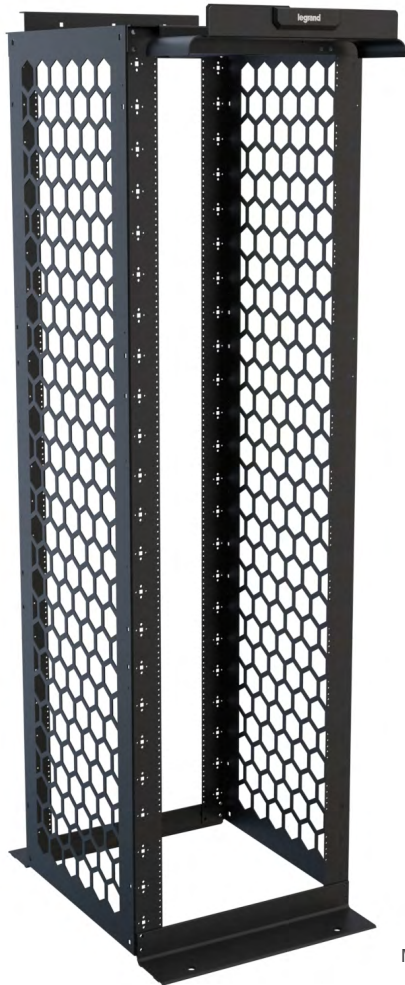
The channel design creates a third space between the racks and behind the front manager that is separate from the inner channel and can be used for fiber backbone, slack storage and front to rear routing of cables from inside the vertical manager to the rear of the rack.

Mighty Mo “Speednuts” allow one person with a single socket wrench to quickly assemble the rack. The “washerless” bonding design meets the UL 2416 grounding standard with no extra fasteners. The rack is also certified to meet the UL 2416 standard with a 2000 lb. load rating.



Mighty Mo 20 Channel Racks

Mighty Mo 20 channel racks are designed to provide greater flexibility and optimum efficiency to any size network. The top trough with a built-in waterfall provides bend radius control and efficient patch cable routing. Honeycomb side rails on all depth channel racks provide the ultimate distribution cable management. The honeycomb side rails, combined with airflow baffles, create a patented system that manages intake and exhaust air from side-vented equipment.



MM20724-B

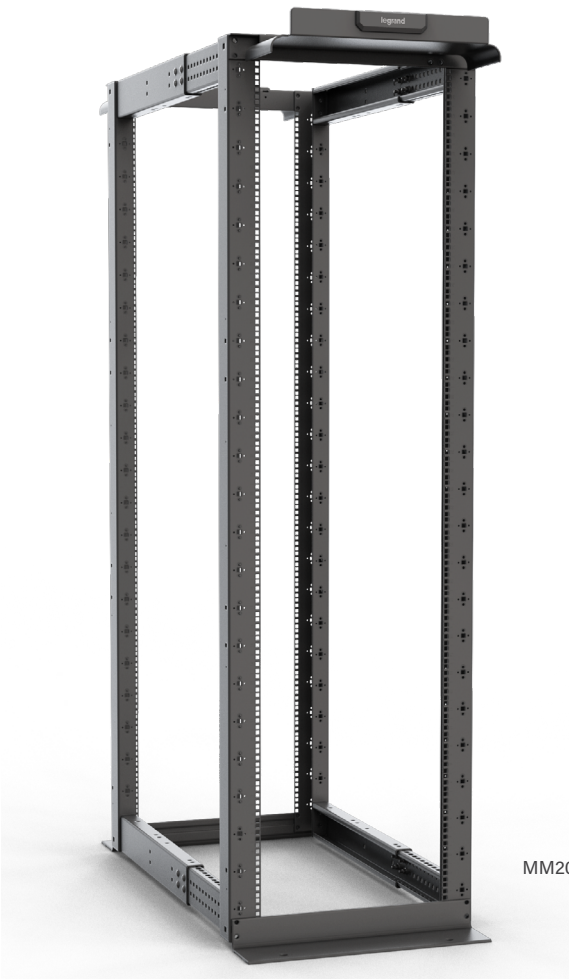
PART NO.	DESCRIPTION
MM20706-X	45 RU (7 ft), 6.5" D Channel, Tapped #12-24
MM20710-X	45 RU (7 ft), 10.5" D Channel, Tapped #12-24
MM20716-X	45 RU (7 ft), 16.25" D Channel, Tapped #12-24
MM20724-X	45 RU (7 ft), 24" D Channel, Tapped #12-24
MM2072438-X	45 RU (7 ft), 24" D Channel, Punched, 3/8" Square
MM20730-X	45 RU (7 ft), 30" D Channel, Tapped #12-24
MM2073038-X	45 RU (7 ft), 30" D Channel, Punched, 3/8" Square
MM20810-X	51 RU (8 ft), 10.5" D Channel, Tapped #12-24
MM20816-X	51 RU (8 ft), 16.25" D Channel, Tapped #12-24
MM20824-X	51 RU (8 ft), 24" D Channel, Tapped #12-24
MM2082438-X	51 RU (8 ft), 24" D Channel, Punched, 3/8" Square
MM20830-X	51 RU (8 ft), 30" D Channel, Tapped #12-24
MM2083038-X	51 RU (8 ft), 30" D Channel, Punched, 3/8" Square

NOTE: For color, replace X with B (Black) or W (White).

Patent numbers: 8,130,494 and 8,256,181 and D803,789

Mighty Mo 20 Dual Adjustable Base 4-Post Racks

Mighty Mo 20 Dual Adjustable Base 4-post racks provide greater flexibility and optimum efficiency in any data center or telecom room. The base angles adjust in depth with the rails reducing the overall footprint when the rail spacing is reduced. Front and rear waterfalls allow for equipment patching and server patching. All styles of Mighty Mo 20 vertical managers can be mounted to the front or rear.



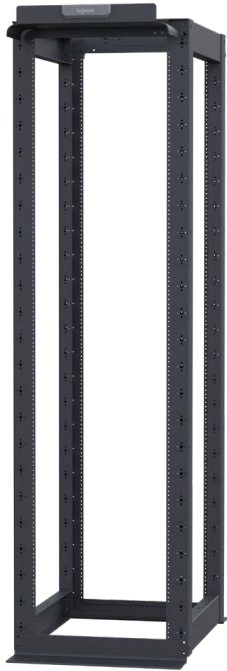
MM2072132DAB38-B

PART NO.	DESCRIPTION
MM2072132DAB12-X	45 RU (7 FT), 21"-32" Rail Spacing, Tapped #12-24
MM2072132DAB38-X	45 RU (7 FT), 21"-32" Rail Spacing, Punched 3/8" Square
MM2073142DAB12-X	45 RU (7 FT), 31"-42" Rail Spacing, Tapped #12-24
MM2073142DAB38-X	45 RU (7 FT), 31"-42" Rail Spacing, Punched 3/8" Square
MM2082132DAB12-X	51 RU (8 FT), 21"-32" Rail Spacing, Tapped #12-24
MM2082132DAB38-X	51 RU (8 FT), 21"-32" Rail Spacing, Punched 3/8" Square
MM2083142DAB12-X	51 RU (8 FT), 31"-42" Rail Spacing, Tapped #12-24
MM2083142DAB38-X	51 RU (8 FT), 31"-42" Rail Spacing, Punched 3/8" Square

NOTE: For colors replace X with B (Black), W (White).
Patent Numbers: 8,130,494 and 8,256,181

Mighty Mo 20 Fixed 4-Post Racks

Mighty Mo 20 4-post racks provide greater flexibility and optimum efficiency in any data center. The fixed racks provide an economical mounting platform for switches and servers. Front and rear waterfalls allow for equipment patching and server patching. All styles of Mighty Mo 20 vertical managers can be mounted front or rear, and airflow baffles can be mounted to manage the airflow of side breathing equipment.



MM20730FXD12-B

PART NO.	DESCRIPTION
MM20730FXD12-X	45RU (7 ft), 30" Rail Spacing, Tapped #12-24
MM20730FXD38-X	45RU (7 ft), 30" Rail Spacing, Punched, 3/8" Square
MM20830FXD12-X	51RU (8 ft), 30" Rail Spacing, Tapped #12-24
MM20830FXD38-X	51RU (8 ft), 30" Rail Spacing, Punched, 3/8" Square

NOTE: For color, replace X with B (Black) or W (White)
 Patent numbers: 8,130,494 and 8,256,181

Mighty Mo 20 Vertical Cable Management Panels

MM20 Vertical Cable Management Panels provide an efficient way to manage rack cabling and can be mounted to MM20 DAB and FXD 4-post racks. The unique honeycomb hex pattern design allows for proper cable routing and cable bend radius control. The hex pattern accepts MM20 universal cable troughs, cable disks, and hexguard cable protectors.



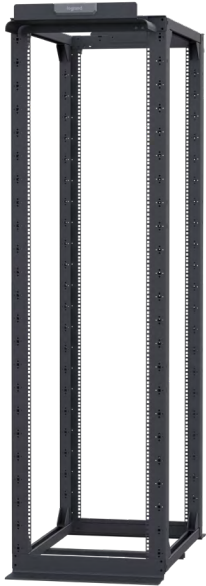
MM207VCMP-B

PART NO.	DESCRIPTION
MM207VCMP-X	MM20 Vertical Cable Management Panel, 7 ft
MM208VCMP-X	MM20 Vertical Cable Management Panel, 8 ft

NOTE: For colors replace X with B (Black), W (White).

Mighty Mo 20 Adjustable 4-Post Racks

Mighty Mo 20 4-post racks provide greater flexibility and optimum efficiency in any data center. The adjustable rack allows all four mounting rails to be adjusted even after the rack has been fastened to the floor. Front and rear waterfalls allow for equipment patching and server patching. All styles of Mighty Mo 20 vertical managers can be mounted front or rear, and airflow baffles can be mounted to manage the airflow of side breathing equipment.



MM20736ADJ38-B

PART NO.	DESCRIPTION
MM20730ADJ12-X	45 RU (7 ft), 30" Max Rail Spacing, Tapped #12-24
MM20730ADJ38-X	45 RU (7 ft), 30" Max Rail Spacing, Punched, 3/8" square
MM20736ADJ12-X	45 RU (7 ft), 36" Max Rail Spacing, Tapped #12-24
MM20736ADJ38-X	45 RU (7 ft), 36" Max Rail Spacing, Punched, 3/8" square
MM20742ADJ12-X	45 RU (7 ft), 42" Max Rail Spacing, Tapped #12-24
MM20742ADJ38-X	45 RU (7 ft), 42" Max Rail Spacing, Punched, 3/8" square
MM20830ADJ12-X	51 RU (8 ft), 30" Max Rail Spacing, Tapped #12-24
MM20830ADJ38-X	51 RU (8 ft), 30" Max Rail Spacing, Punched, 3/8" square
MM20836ADJ12-X	51 RU (8 ft), 36" Max Rail Spacing, Tapped #12-24
MM20836ADJ38-X	51 RU (8 ft), 36" Max Rail Spacing, Punched, 3/8" square
MM20842ADJ12-X	51 RU (8 ft), 42" Max Rail Spacing, Tapped #12-24
MM20842ADJ38-X	51 RU (8 ft), 42" Max Rail Spacing, Punched, 3/8" square

NOTE: For color, replace X with B (Black) or W (White).

Patent numbers: 8,130,494 and 8,256,181

Mighty Mo 20 4-Post Rail Kit & Air Baffle Rails

Baffle rails allow 16-1/4 in, 24 in, and 30 in deep airflow baffles to be mounted to the side of the adjustable 4-post rack, even when the mounting rails are set to a deeper dimension.



MM207ADJABR-B

PART NO.	DESCRIPTION	RAIL TYPE
MM207ADJABR-X	Mighty Mo 20 4-Post Rack Baffle Rail 7 ft- For Mighty Mo 20 4-Post Adjustable Racks	Baffle
MM207RKADJ12-X	Mighty Mo 20 4-Post Adjustable Rack Rail Kit, 7 ft (45RU) - Set of 2	Tapped, #12-24
MM207RKADJ38-X	Mighty Mo 20 4-Post Adjustable Rack Rail Kit, 7 ft (45RU) - Set of 2	Punched, 3/8 in Square
MM208ADJABR-X	Mighty Mo 20 4-Post Rack Baffle Rail 8 ft- For Mighty Mo 20 4-Post Adjustable Racks	Baffle
MM208RKADJ12-X	Mighty Mo 20 4-Post Adjustable Rack Rail Kit, 8 ft (51RU) - Set of 2	Tapped, #12-24
MM208RKADJ38-X	Mighty Mo 20 4-Post Adjustable Rack Rail Kit, 8 ft (51RU) - Set of 2	Punched, 3/8 in Square

NOTE: For color, replace X with B (Black) or W (White).

Mighty Mo 20 Vertical Manager with Door

The wire frame and rack unit finger design promotes efficient routing of patch cords between racks. Dual hinged slam latch doors allow easy access during moves, adds, and changes. Supplied with four cable management spools to provide slack storage for fiber jumpers and twelve bend limiting clips to protect fiber entering the vertical manager.



MM20VMD710-B

PART NO.	DESCRIPTION
MM20VMD706-X	6.5 in W x 10.25 in D for 7 ft MM20 racks
MM20VMD710-X	10.5 in W x 15 in D for 7 ft MM20 racks
MM20VMD712-X	12.25 in W x 15 in D for 7 ft MM20 racks
MM20VMD806-X	6.5 in W x 10.25 in D for 8 ft MM20 racks
MM20VMD810-X	10.5 in W x 15 in D for 8 ft MM20 racks
MM20VMD812-X	12.25 in W x 15 in D for 8 ft MM20 racks

NOTE: For color, replace X with B (Black) or W (White).
06 (6.5) in wide managers are 10.25 in deep. All other managers are 15 in deep.
Patent number: 9,303,440

Mighty Mo 20 VMD Finger Covers

The finger cover is used to finish the end of a row of Mighty Mo racks by covering up the side of the vertical manager. Finger covers mount to the fingers on the VMD or VMS vertical managers.



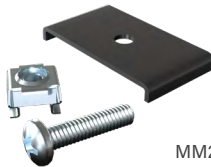
MM20VMD7FC-B

PART NO.	DESCRIPTION
MM20VMD7FC-X	For 7 ft MM20VMD managers
MM20VMD8FC-X	For 8 ft MM20VMD managers

NOTE: For color, replace X with B (Black) or W (White).
6.5 in wide managers are 10.25 in deep. All other managers are 15 in deep.

Mighty Mo 20 VMD End of Row Stabilizer Kit

Stabilizing kits are used to reinforce the mounting of 10 in and wider VMD and VMS vertical managers mounted at the end of a row.



MM20VMDSK-B

PART NO.	DESCRIPTION
MM20VMDSK-B	Mighty Mo 20 Vertical Managers Stabilizing Kit - Black
MM20VMDSK-W	Mighty Mo 20 Vertical Managers Stabilizing Kit - White

Mighty Mo 20 Vertical Manager with Cover

The wire frame and rack unit finger design promotes efficient routing of patch cords between racks. Dual hinged snap-on covers allow easy access during moves, adds, and changes. 6 inch and 10 inch-wide VMS Managers are supplied with four cable management spools and 12 bend-limiting clips.



MM20VMS706-B

PART NO.	DESCRIPTION
MM20VMS704-B	3.75 in W x 8.62 in D for 7 ft MM20 racks, Black
MM20VMS706-B	6 in W x 8.62 in D for 7 ft MM20 racks, Black
MM20VMS710-B	10 in W x 13.62 in D for 7 ft MM20 racks, Black

10 in wide managers are 13.62 in deep. All other managers are 8.62 in deep.
Patent numbers: 6,946,605 and 7,026,553

Mighty Mo 20 Vertical Manager with Latches

Wire frame and hinged latches allow easy access during moves, adds, and changes - an efficient and economical choice for small to mid-size networks.



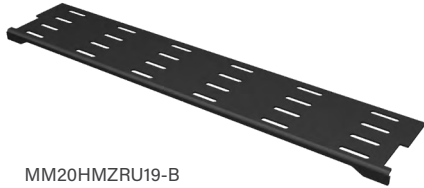
MM20VML704-B

PART NO.	DESCRIPTION
MM20VML704-B	4 in W x 6.12 in D for 7 ft MM20 racks, Black
MM20VML706-B	6 in W x 6.12 in D for 7 ft MM20 racks, Black

Patent numbers: 6,365,834

Mighty Mo 20 Zero-U Horizontal Managers

Zero rack unit horizontal managers slide into the slots in the Mighty Mo 20 fingers and provide support for fiber and copper cables exiting horizontal equipment modules. They toollessly lock into place with the 19 in version mounting between two vertical managers in front of the equipment. Internal versions are sized to fit inside the vertical managers and provide a continuous horizontal path across the front of the racks and managers.



MM20HMZR19-B

PART NO.	DESCRIPTION
MM20HMZR06-X	For MM20 6 in W VMD and VMS style managers
MM20HMZR10-X	For MM20 10 in W VMD and VMS style managers
MM20HMZR12-X	For MM20 12 in W VMD style managers
MM20HMZR19-X	For MM20 16 in W VMD style managers

NOTE: For color, replace X with B (Black) or W (White).

Mighty Mo 20 Horizontal Managers

Horizontal cable managers are available in 2RU and 4RU sizes. Fingers begin 3/4 in from the face of rack to provide bend limitation for cables, protecting cables, equipment, and network performance. Included hinged cover mounts with six heavy-duty clips allow them to be opened one-handed without becoming “unhinged”. Manufactured from UL94V-0 rated plastic.



MM20HMF4RU-B

PART NO.	DESCRIPTION
MM20HMF2RU-X	2 RU Single-Sided Horizontal Manager
MM20HMF4RU-X	4 RU Single-Sided Horizontal Manager

NOTE: For color, replace X with B (Black) or W (White)

Patent Number: 9,429,252

Mighty Mo 20 Horizontal Manager Air Blocker

Horizontal cable manager air blockers are available in 2RU and 4RU sizes. Providing a tool-less snap-in filler panel within the Mighty Mo 20 Horizontal Manager to fill open rack space where separation of cold air and hot air is required.



MM20HMF2RUAB-M

PART NO.	DESCRIPTION
MM20HMF2RUAB-M	2 RU Horizontal Manager Air Blocker, Magnesium
MM20HMF4RUAB-M	4 RU Horizontal Manager Air Blocker, Magnesium

Mighty Mo 20 Lightweight Airflow Baffles

Mighty Mo 20 airflow baffles mount between Mighty Mo 20 channel, fixed or adjustable racks, direct intake and exhaust air on side flow network equipment from cold aisle to hot aisle. The patented angle design utilizes less space, reduces back pressure, and provides better overall performance than square duct style systems.



MM20ABL71612-B

PART NO.	DESCRIPTION	COMPATIBLE RACK	COMPATIBLE VERTICAL MANAGER
MM20ABL71610-B	7' H, 16" D, 10" W	MM20716	MM20VMD710
MM20ABL71612-B	7' H, 16" D, 12" W	MM20716	MM20VMD712
MM20ABL72410-B	7' H, 24" D, 10" W	MM20724	MM20VMD710
MM20ABL72412-B	7' H, 24" D, 12" W	MM20724	MM20VMD712
MM20ABL73010-B	7' H, 30" D, 10" W	MM20730	MM20VMD710
MM20ABL73012-B	7' H, 30" D, 12" W	MM20730	MM20VMD712
MM20ABL81612-B	8' H, 16" D, 12" W	MM20816	MM20VMD812
MM20ABL82412-B	8' H, 24" D, 12" W	MM20824	MM20VMD812
MM20ABL83012-B	8' H, 30" D, 12" W	MM20830	MM20VMD812

Mighty Mo 20 Universal Cable Troughs

Universal cable troughs snap into the hex pattern on the Mighty Mo 20 channel racks and are used to create a front to rear or vertical trough on the inside or outside of the channel. They can be mounted in a row to create a continuous trough or rotated at 30° increments to support cables through directional changes. Up to 3 HiLOC™ harnesses can be toollessly mounted into each trough.



MM20UCT2X2-B

PART NO.	DESCRIPTION
MM20UCT2X2-B	2 in x 2 in x 5.25 in Trough with Hex Mounting For MM20 Channel Racks, 6-Pack - Black
MM20UCT2X2-W	2 in x 2 in x 5.25 in Trough with Hex Mounting For MM20 Channel Racks, 6-Pack - White

NOTE: Patent Number: 9,429,252

Mighty Mo Hexguard

The Mighty Mo 20 Hexguard cabling protection snaps into the channel rails of the rack and protects cables while allowing for easy passage thru the channel. The Hexguard snaps directly into the honeycomb cutouts and can be installed for new as well as existing cable installs.

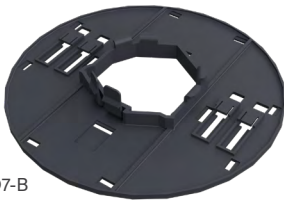


MM20HEXGD-W

PART NO.	DESCRIPTION
MM20HEXGD-B	Mighty Mo 20 Hexguard, 12 Halves - Black
MM20HEXGD-W	Mighty Mo 20 Hexguard, 12 Halves - White

Mighty Mo 20 Universal Cable Disk

The Mighty Mo 20 Universal Cable Disk mounts to the hex grid on the Mighty Mo 20 Channel Rack. Up to 4 HiLOC™ harnesses can be toollessly mounted onto each disc, or a Legrand 60401185 Fiber Spool Kit can be added for slack storage of excess cable.



MM20CMD7-B

PART NO.	DESCRIPTION
MM20CMD7-B	Mighty Mo 20 Cable Disk with Hex Mounting For MM20 Channel Racks, 4-Pack, Black
MM20CMD7-W	Mighty Mo 20 Cable Disk with Hex Mounting For MM20 Channel Racks, 4-Pack, White

Mighty Mo 20 Bending Limiting Clips

Bend limiting clips snap onto any finger on the vertical management cage to provide bend limitation for fiber jumpers entering and exiting the cage. The half-oval design provides 180° protection for fiber jumpers.

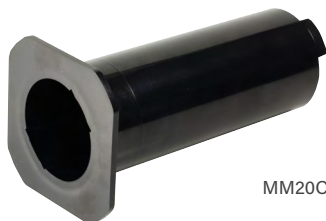


MM20BLC-B

PART NO.	DESCRIPTION
MM20BLC-B	Mighty Mo 20 BEND LIMITING CLIP 6.25 in L, 12 Pack - Black (For VMD or VMS Style Managers)
MM20BLC-W	Mighty Mo 20 BEND LIMITING CLIP 6.25 in L, 12 Pack - White (For VMD or VMS Style Managers)

Mighty Mo 20 Cable Management Spools

Cable management spools effectively manage excess fiber cable slack, providing flexibility and the proper bend radius for cables. They mount at rack unit intervals on the front of the 6 in wide vertical manager or on the front and rear of the 10 in and wider vertical managers with fingers.



MM20CMS6-B

PART NO.	DESCRIPTION
MM20CMS6-X	Mighty Mo 20 Cable Management Spool 6.25 in W, 12 Pack Set of 4 (For VMD or VMS Style Managers)
MM20CMS10-X	Mighty Mo 20 Cable Management Spool 10in W, 12 Pack Set of 4 (For VMD or VMS Style Managers)

NOTE: For colors replace X with B (Black), W (White)

Mighty Mo 20 Cable Management Rings

These black plastic rings flex at the end for easy insertion or removal of cross-connect cables. The 3/8 in 1/4 turn connector mounts on the front and back of the Mighty Mo racks. It can also be installed into 3/8 in square accessory holes on the sides of the Mighty Mo racks or into any open 3/8 in square EIA mounting hole.



MM20CMR6-B

PART NO.	DESCRIPTION
MM20CMR3-X	Mighty Mo 20 Cable Management Ring 1.72 in x 3 in W, 14 Pack
MM20CMR6-X	Mighty Mo 20 Cable Management Ring 1.72 in x 6 in W, 14 Pack

NOTE: For colors replace X with B (Black), W (White)

Mighty Mo 20 Waterfall Extension

Increases the height of the front flange of the Mighty Mo waterfall by 2.25 in when additional cable capacity is required.

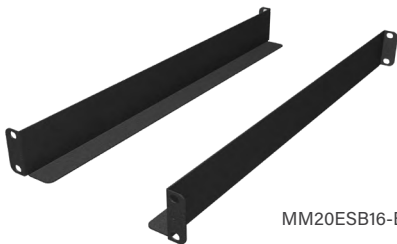


MM20WFE-B

PART NO.	DESCRIPTION
MM20WFE-B	Mighty Mo 20 Waterfall Extension 4.50 in X 19.15 in - Black
MM20WFE-W	Mighty Mo 20 Waterfall Extension 4.50 in X 19.15 in - White

Mighty Mo 20 Equipment Support Brackets

The 6 in equipment support brackets can be cantilever mounted at the rear of any Mighty Mo rack and used to support equipment mounted to the front rails. Deeper equipment support brackets are sized to the 16-1/4 in to 30 in channel racks and 4-point mount with the equipment's mounting ears to provide zero unit support from front-to-back.



MM20ESB16-B

PART NO.	DESCRIPTION
MM20ESB06-X	Mighty Mo 20 Equipment Support Brackets, 6.5 in - 1 Set
MM20ESB16-X	Mighty Mo 20 Equipment Support Brackets, 16.25 in - 1 Set
MM20ESB24-X	Mighty Mo 20 Equipment Support Brackets, 24 in - 1 Set
MM20ESB30-X	Mighty Mo 20 Equipment Support Brackets, 30 in - 1 Set

NOTE: For colors replace X with B (Black), W (White)

Mighty Mo 20 Cable Troughs

Cable troughs support fiber cables at the bottom of Mighty Mo racks. The kit includes an extension that bridges the space between racks and creates a continuous trough at the bottom of the row.



MM20CT4RUK-B

PART NO.	DESCRIPTION
MM20CT4RU-X	Mighty Mo 20 Cable Trough, 4RU, 19in Wide
MM20CT4RUK-X	Mighty Mo 20 Cable Trough Extension, 4RU, 19in Wide

NOTE: For colors replace X with B (Black), W (White)

Mighty Mo 20 Cable Runway Mounting Brackets

Mounts to the top side of the Mighty Mo rack channels or frames, providing mounting for runway to run parallel with the row of racks. Standard brackets position the bottom of the runway at 2 in above the rack height and 6 in high brackets position the bottom of the runway at 6 in above the rack height.



MM20CRB06-B

PART NO.	DESCRIPTION
MM20CRB06-X	2 in H for MM20 6.5 in Channel Racks, Supports Runway up to 18 in W
MM20CRB10-X	2 in H for MM20 10.5 in Channel Racks, Supports Runway up to 18 in W
MM20CRB16-X	2 in H for MM20 16.25 in Channel Racks, Supports Runway up to 18 in W
MM20CRB1624-X	2 in H for MM20 16.25 in Channel Racks, Supports Runway up to 24 in W
MM20CRB24-X	2 in H for MM20 24 in Channel Racks, Supports Runway up to 24 in W
MM20CRB30-X	2 in H for MM20 30 in Channel Racks, Supports Runway up to 24 in W
MM20CRB4PU-X	2 in H for Side of MM20 4-Post Racks, Supports Runway up to 24 in W
MM20CRB4PRU-X	2 in H for Rear of MM20 4-Post Racks, Supports Runway up to 18 in W
MM20CRB6H06-X	6 in H for MM20 6.16 in Channel Racks, Supports Runway up to 18 in W
MM20CRB6H10-X	6 in H for MM20 10.16 in Channel Racks, Supports Runway up to 18 in W
MM20CRB6H16-X	6 in H for MM20 16.25 in Channel Racks, Supports Runway up to 18 in W
MM20CRB6H1624-X	6 in H for MM20 16.25 in Channel Racks, Supports Runway up to 24 in W
MM20CRB6H24-X	6 in H for MM20 24in Channel Racks, Supports Runway up to 24 in W
MM20CRB6H30-X	6 in H for MM20 30in Channel Racks, Supports Runway up to 24 in W
MM20CRB6H4PU-X	6 in H for Side of MM20 4-Post Racks, Supports Runway up to 24 in W
MM20CRB6H4PRU-X	6 in H for Rear of MM20 4-Post Racks, Supports Runway up to 18 in W

NOTE: For colors replace X with B (Black), W (White)

Mighty Mo 20 Cable Wire Tray Mounting Brackets

Mounts to the top side of the Mighty Mo rack channels or frames, providing mounting for wire tray to run parallel with the row of racks. Standard brackets position the bottom of the wire tray at 2 in above the rack height, and 6 in high brackets position the bottom of the wire tray at 6 in above the rack height.



MM20CTB16-B

PART NO.	DESCRIPTION
MM20CTB06-X	2 in H for MM20 6.5 in Channel Racks, Supports Wire Tray up to 18 in W
MM20CTB10-X	2 in H for MM20 10.5 in Channel Racks, Supports Wire Tray up to 18 in W
MM20CTB16-X	2 in H for MM20 16.25 in Channel Racks, Supports Wire Tray up to 18 in W
MM20CTB1624-X	2 in H for MM20 16.25 in Channel Racks, Supports Wire Tray up to 24 in W
MM20CTB24-X	2 in H for MM20 24 in Channel Racks, Supports Wire Tray up to 24 in W
MM20CTB30-X	2 in H for MM20 30 in Channel Racks, Supports Wire Tray up to 24 in W
MM20CTB4PU-X	2 in H for Side of MM20 4-Post Racks, Supports Wire Tray up to 24 in W
MM20CTB4PRU-X	2 in H for Rear of MM20 4-Post Racks, Supports Wire Tray up to 18 in W
MM20CTB6H06-X	6 in H for MM20 6.16 in Channel Racks, Supports Wire Tray up to 18 in W
MM20CTB6H10-X	6 in H for MM20 10.16 in Channel Racks, Supports Wire Tray up to 18 in W
MM20CTB6H16-X	6 in H for MM20 16.25 in Channel Racks, Supports Wire Tray up to 18 in W
MM20CTB6H1624-X	6 in H for MM20 16.25 in Channel Racks, Supports Wire Tray up to 24 in W
MM20CTB6H24-X	6 in H for MM20 24 in Channel Racks, Supports Wire Tray up to 24 in W
MM20CTB6H30-X	6 in H for MM20 30 in Channel Racks, Supports Wire Tray up to 24 in W
MM20CTB6H4PU-X	6 in H for Side of MM20 4-Post Racks, Supports Wire Tray up to 24 in W
MM20CTB6H4PRU-X	6 in H for Rear of MM20 4-Post Racks, Supports Wire Tray up to 18 in W

NOTE: For colors replace X with B (Black), W (White)

Mighty Mo 20 Base Dust Covers

Prevents dust and debris from accumulating in the rack base. Scored for bending to clear cables from floor up to channel.



MM20BDC16-B

PART NO.	DESCRIPTION
MM20BDC06-X	MM20 Base Dust Cover for 6.5 in deep MM20 Channel Racks
MM20BDC10-X	MM20 Base Dust Cover for 10.5 in deep MM20 Channel Racks
MM20BDC16-X	MM20 Base Dust Cover for 16.25 in deep MM20 Channel Racks
MM20BDC24-X	MM20 Base Dust Cover for 24 in deep MM20 Channel Racks
MM20BDC30-X	MM20 Base Dust Cover for 30 in deep MM20 Channel Racks

NOTE: For colors replace X with B (Black), W (White)

Mighty Mo 20 End Panels

The 4.4 in wide end panel is used to finish the end of a row of Mighty Mo racks when a 6 in wide vertical manager is mounted at the end of the row. It mounts directly to the rack behind the manager, providing a stable mounting surface for the manager and concealing cables in the rack frame.



MM20EP716-B

PART NO.	COMPATIBLE RACK	COMPATIBLE VERTICAL MANAGER
MM20EP706-X	MM20706	MM20VMD706
MM20EP710-X	MM20710	MM20VMD706
MM20EP716-X	MM20716	MM20VMD706
MM20EP724-X	MM20724	MM20VMD706
MM20EP730-X	MM20730	MM20VMD706
MM20EP736-X	MM20736	MM20VMD706
MM20EP742-X	MM20742	MM20VMD706
MM20EP810-X	MM20810	MM20VMD806
MM20EP816-X	MM20816	MM20VMD806
MM20EP824-X	MM20824	MM20VMD806
MM20EP830-X	MM20830	MM20VMD806
MM20EP836-X	MM20836	MM20VMD806
MM20EP842-X	MM20842	MM20VMD806

NOTE: For colors replace X with B (Black), W (White).

Mighty Mo 20 Narrow End Panels

The 2.25 in wide end panel is used to finish the end of a row of Mighty Mo racks when a 10 in or wider vertical manager is mounted at the end of the row. It mounts directly behind the manager concealing cables in the rack frame. The narrow end panel requires the use of an end panel support bracket to stabilize the rear of the end panel.



MM20EPN716-B

PART NO.	COMPATIBLE RACK	COMPATIBLE VERTICAL MANAGER
MM20EPN706-X	MM20706	MM20VMD710 or wider
MM20EPN710-X	MM20710	MM20VMD710 or wider
MM20EPN716-X	MM20716	MM20VMD710 or wider
MM20EPN724-X	MM20724	MM20VMD710 or wider
MM20EPN730-X	MM20730	MM20VMD710 or wider
MM20EPN736-X	MM20736	MM20VMD710 or wider
MM20EPN742-X	MM20742	MM20VMD710 or wider
MM20EPN810-X	MM20810	MM20VMD810 or wider
MM20EPN816-X	MM20816	MM20VMD810 or wider
MM20EPN824-X	MM20824	MM20VMD810 or wider
MM20EPN830-X	MM20830	MM20VMD810 or wider
MM20EPN836-X	MM20836	MM20VMD810 or wider
MM20EPN842-X	MM20842	MM20VMD810 or wider

NOTE: For colors replace X with B (Black), W (White).

Mighty Mo 20 End Panel Support Brackets

The end panel support brackets mount from the rack to the narrow end panels to stabilize the rear of the end panel.



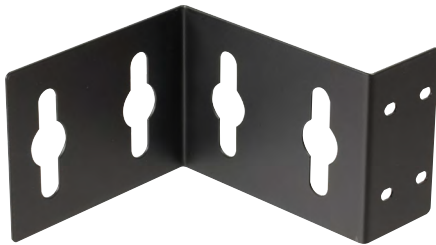
MM20EPS-B

PART NO.	DESCRIPTION
MM20EPS-X	For Bracing MM20 Narrow End Panels behind 10 in W or 12 in W VMD Managers, Set of 3 Brackets

NOTE: For colors replace X with B (Black), W (White).

Mighty Mo 20 PDU Mounting Brackets

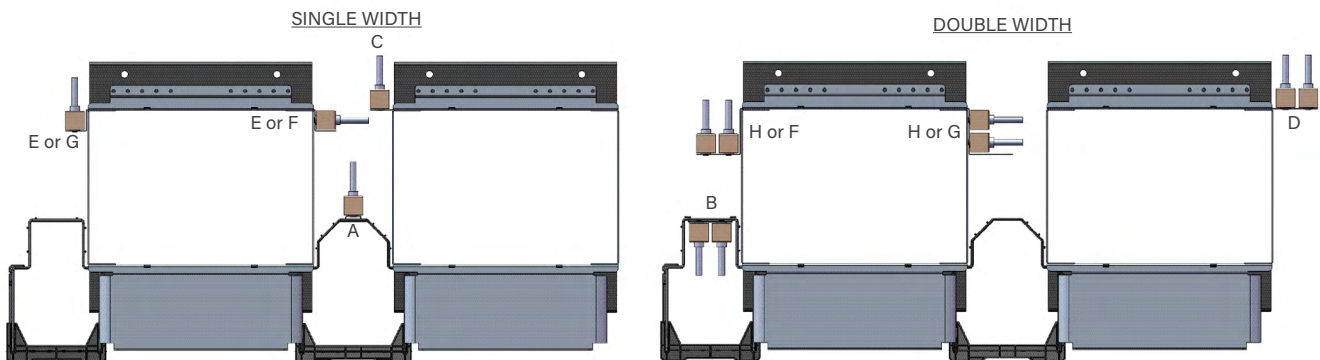
Legrand Mighty Mo 20 PDU mounting bracket kits are designed to mount "Button Mount" PDUs to the VMD style vertical managers or rear channels of the Mighty Mo 20 open racks. Offset, Flat and vertical manager style brackets are available, which provide multiple mounting options.



MM20PDUMB2D2W

PART NO.	DESCRIPTION	LOCATION
MM20PDUMBVM1W-X	Cage Mount, 1 Wide	A
MM20PDUMBVM2W-X	Cage Mount, 2 Wide	B
MM20PDUMBFT1W-X	Rack Mount, Flat, 1 Wide	C
MM20PDUMBFT2W-X	Rack Mount, Flat, 2 Wide	D
MM20PDUMB1D1W-X	Rack Mount, 1 Deep, 1 Wide	E
MM20PDUMB1D2W-X	Rack Mount, 1 Deep, 2 Wide	F
MM20PDUMB2D1W-X	Rack Mount, 2 Deep, 1 Wide	G
MM20PDUMB2D2W-X	Rack Mount, 2 Deep, 2 Wide	H

NOTE: For colors replace X with B (Black), W (White).



Overhead Cable Pathway Racks

The Mighty Mo Overhead cable Pathway Rack simplifies above rack cable management by adding RU space for patch panels without taking up any additional floor space. The racks can be easily installed in several orientations using threaded rods suspended from the ceiling or by being attached to existing overhead cable pathway systems from Legrand, including Cablofil® wire mesh tray and tubular runway.

The Mighty Mo overhead cable pathway rack features up to eight rack units and a snap-fit 3-piece plastic waterfall which allows for exceptional cable egress down to adjacent racks or cabinets. Manufactured from a welded steel frame, the rugged overhead rack is ready to install right out of the box, perfect for new builds or retrofits in data centers and telecom rooms.

Mighty Mo Overhead Cable Pathway Racks

The Mighty Mo® cable pathway rack series is available in RU increments from 2RU through 8RU, and in both black and white.

PART NO.	DESCRIPTION	RU
MMOHR-2RU-X	Mighty Mo Overhead Cable Pathway Rack, 2RU	2
MMOHR-3RU-X	Mighty Mo Overhead Cable Pathway Rack, 3RU	3
MMOHR-4RU-X	Mighty Mo Overhead Cable Pathway Rack, 4RU	4
MMOHR-5RU-X	Mighty Mo Overhead Cable Pathway Rack, 5RU	5
MMOHR-6RU-X	Mighty Mo Overhead Cable Pathway Rack, 6RU	6
MMOHR-7RU-X	Mighty Mo Overhead Cable Pathway Rack, 7RU	7
MMOHR-8RU-X	Mighty Mo Overhead Cable Pathway Rack, 8RU	8

NOTE: For color, replace X with B (Black), W (White).



MMOHR-2RU-W
Cablofil Mounted



MMOHR-6RU-B
Tubular Runway Mounted



MMOHR-6RU-W Threaded
Rod Mounted

Compatible Products for Mighty Mo 20

Standard EIA Horizontal Managers

Horizontal cable managers are available in 1RU, 2RU, 3RU, and 4RU sizes. Fingers begin 3/4 in from the face of rack to provide bend limitation for cables, protecting cables, equipment and network performance. Included hinged cover mounts with six heavy duty clips allow them to be opened one handed without becoming “unhinged”. Manufactured from UL94V-0 rated plastic.



SHMC4RU

PART NO.	SIDED TYPE	MANAGEMENT TYPE	HEIGHT (RU)	W MAXIMUM FILL CAPACITY (.250 DIA. CABLES)
SHMC1RU	Single	Multiple Fingers	1	26
SHMC2RU			2	91
SHMC3RU			3	155
SHMC4RU			4	219
PART NO.	DESCRIPTION			
PHMC1RU	Plugs for 1 RU Horizontal Cable Manger, White - Pack of 4			
PHMC2RU	Plugs for 2 RU Horizontal Cable Manger, White - Pack of 4			

NOTE: Standard finish is Black, add **W** to the end of the Part Number for a White finish

Standard Cable Management Panels

These horizontal cable managers provide organized routing and management for cables within the rack. Panels are available in a variety of configurations to accommodate different densities, rack unit sizes and ring layouts.



60400131

PART NO.	HEIGHT (RU)	DEPTH (IN)	SIDED TYPE	MANAGEMENT TYPE	# OF RINGS
60400131	1	3.5	Single	Horizontal Rings	5
60400057	2	3.5			5



60400057

Feed-Through Brush Panels

These horizontal feed-through brush panels enable ingress and egress of cables while minimizing airflow and protecting cables and equipment form foreign particulates.

PART NO.	DESCRIPTION
FTBP-1RU	Feed-Through Brush Panel 1RU 1.75 in H X 19 in W



FTBP-1RU

Tool-Less Filler Panels

Tool-less snap-in filler panels are used to fill open rack units in racks and cabinets where separation of cold air and hot air is required.

PART NO.	DESCRIPTION
BFPT-1RU-10	Tool-Less Snap-In Filler Panels - 1 RU, 19 in Wide - 10 pcs
BFPT-2RU-10	Tool-Less Snap-In Filler Panels - 2 RU, 19 in Wide - 10 pcs



BFPT-2RU-10

NOTE: Standard finish is Black, add **-W** to the end of the Part Number for a White finish.
Patent number: 8,955,693

Standard Equipment Shelves

PART NO.	DESCRIPTION
60400006	Equipment Shelf - 5.25 in H x 17.25 in W x 12.13 in D - Black
60400405	Equipment Shelf - 5.25 in H x 17.25 in W x 15.13 in D - Black
604045681	Four point equipment shelf for Mighty Mo racks and cabinets - 19 in x 1.75 in x 20 in - black
60400538	Adjustable Four Point Server Rack Equipment Shelf - 19 in x 1.75 in x 30.25 in - Black



Panel Mounting Screws, Cage Nuts & Cable Straps

PART NO.	DESCRIPTION
60400533	Panel Mounting Screw, 12-24 x 5/8 - Black, Pack of 50
RU-1224CN	12-24 Rack Unit Cage Nuts for .125 thick material, Pack of 50
MM201224CN	12-24 Cage Nuts for .125 thick material, Pack of 50
70700188-00	12 in Hook-Loop Strap, 1.25 in to 3.25 in dia. grip range, Black, Pack of 10
70700189-00	6 in Hook-Loop Strap, 1.25 in to 3.25 in dia. grip range, Black, Pack of 10



Two Hole Long Barrel Compression Lugs

Manufactured from electroplated tinned copper. Long barrels maximize number of crimps and are color coded. Inspection port assures full conductor insertion. 10pk.

PART NO.	CABLE SIZE	O.C. DIMENSION BETWEEN HOLES	SCREW SIZE	COLOR CODE
CL2LB6C	6	1 in	3/8 in	Blue
CL2LB2A	2	.625 in	1/4 in	Brown



Horizontal Rack Bonding Busbar Kits

Kits include: (1) 1/4 in thick electrolytic tough pitch 110 copper alloy bar, (1) 3 in bar splice plate with 2 slotted holes, (2) White delrin insulators, (2) 12-24 x 5/8 in hex washer head screw, (2) #12-24 x 3/4 in copper flashed brass screw, (2) #12 copper flat washer, (8) #6-32 x 1/4 in copper flashed brass screw, (8) #6 ring terminal, (1) #6 long barrel compression lug, 3/4 in o.c. for 1/4 in hardware, (2) 1/4 in-20 x 3/4 in stainless steel cap screw, (2) 1/4 in stainless steel lock washer, (2) 1/4 in-20 stainless steel nut

PART NO.	DESCRIPTION
GBH19KIT	Horizontal Ground Bar Kit, 19 in W x 1 in H, EIA



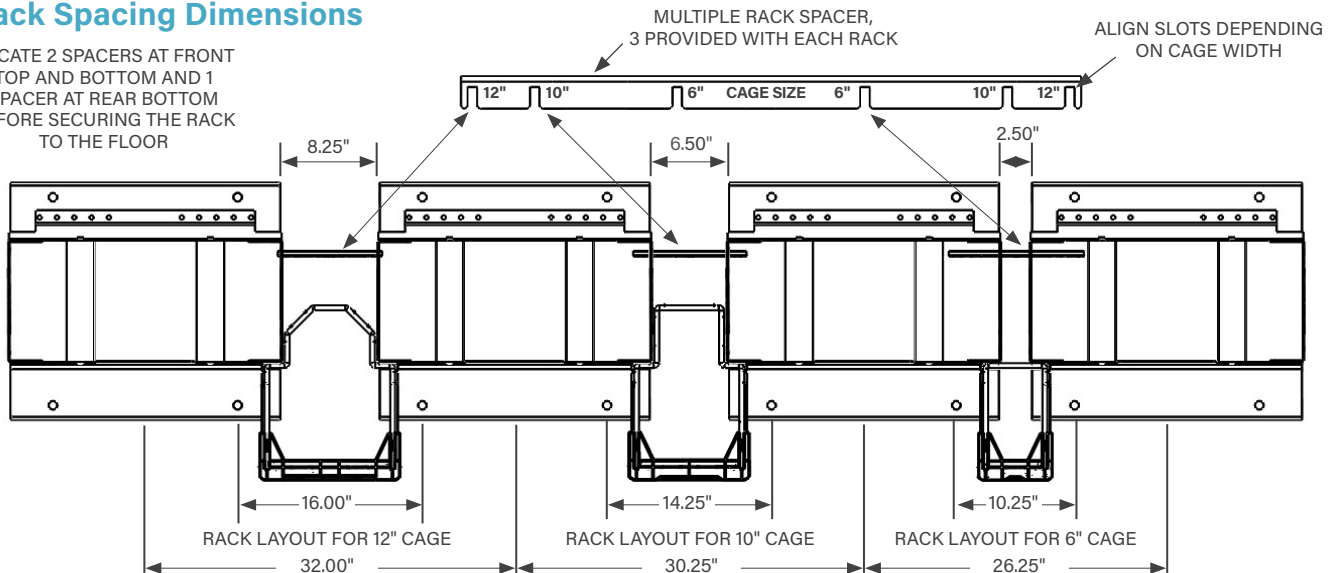
MM20 Fill Chart

Recommended Cable Fill Capacities at 50%

PART NO.	DESCRIPTION	TOTAL INT. (USEABLE) AREA 100% (SQ IN.)	# OF CABLES PER CABLE DIAMETER (IN.)					
			0.15"	0.2"	0.25"	0.3"	0.35"	
MM20 Vertical Manager with Door								
MM20VMDX06-X	6"W x 10"D for X' MM20 racks	35.00	761	438	278	194	142	
MM20VMDX10-X	10.5"W x 15"D for X' MM20 racks	90.00	1957	1125	714	500	366	
MM20VMDX12-X	12.25"W x 15"D for X' MM20 racks	104.87	2280	1311	832	583	426	
MM20VMDX16-X	16.25"W x 15"D for X' MM20 racks	151.76	3299	1897	1204	843	617	
MM20 Vertical Manager with Split Covers								
MM20VMSX04-B	4"W x 9"D for X' MM20 racks	19.25	418	241	153	107	78	
MM20VMSX06-B	6"W x 9"D for X' MM20 racks	35.00	761	438	278	194	142	
MM20VMSX10-B	10"W x 9"D for X' MM20 racks	90.50	1967	1131	718	503	368	
MM20 Manager Single RU Finger Opening								
N/A	1RU	7.35	160	92	58	41	30	
MM20 Vertical Manager with Latches								
MM20VMLX04-B	4"W x 6"D for X' MM20 racks	16.25	353	203	129	90	66	
MM20VMLX06-B	6"W x 6"D for X' MM20 racks	26.25	571	328	208	146	107	
MM20 Horizontal Managers								
MM20HMF2RU-X	3.5"H x 9"D for MM20 racks	17.15	373	214	136	95	70	
MM20HMF4RU-X	7"H x 9"D for MM20 racks	42.00	913	525	333	233	171	
PART NO.	DESCRIPTION	TOTAL INT. (USEABLE) AREA 100% (SQ IN.)	# of 24 Cable Bundles per Cable Diameter (in.)					
			0.15"	0.2"	0.25"	0.3"	0.35"	
	BUNDLE DIAMETER		.750"	1.000"	1.264"	1.500"	1.750"	
MM20 Channel Racks								
MM20X06-X	6.5"D MM20 rack	35.00	64	36	20	16	12	
MM20X10-X	10.5"D MM20 rack	57.40	112	60	32	28	22	
MM20X16-X	16.25"D MM20 rack	89.60	168	96	52	44	34	
MM20X24-X	24"D MM20 rack	133.00	256	144	76	64	52	
MM20X30-X	30"D MM20 rack	166.60	320	180	94	80	66	

Rack Spacing Dimensions

LOCATE 2 SPACERS AT FRONT TOP AND BOTTOM AND 1 SPACER AT REAR BOTTOM BEFORE SECURING THE RACK TO THE FLOOR



MIGHTY MO® 20 is a complete cable management solution that is designed to complement the entire Legrand Product Offering. The Mighty Mo 20 creates a physical infrastructure that maximizes performance, while allowing for infinite cable routing schemes. No two networks are the same, and Mighty Mo 20, with its long list of accessories, can enable countless configurations for equipment and cable pathways.

Mighty Mo 20 has been designed with four major physical infrastructure guidelines; speed, efficiency, performance, and flexibility.

1. Speed of assembly—Channel racks allow for single person build
2. Efficiency of cable management—Ensuring proper cable support and bend radius
3. Performance of the network—Stabilizing cable destinations
4. Flexibility—Build unlimited cable pathways throughout the system

Some of the accessories and features that enable the four guidelines include:

Speed of Assembly

- Speed nuts - eliminate the need for loose hardware
- Grounding and bonding- built-in feature creates bond during assembly
- Vertical manager hanging clip - eliminates the need to hold manager when mounting
- Cablofil and tubular runway mounting brackets - toolless assembly, eliminates threaded rod

Efficiency of Cable Management

- Zero RU horizontal manager - creates immediate tie off of cables at the switch card
- 180° Bend limiting clip - ensures bend radius of fiber into vertical manager
- Hexguard™ cable passage - allows cable to pass through hex pattern sidewall safely
- Universal cable trough - creates a fiber raceway within the rack

Performance of the Network

- Large capacity vertical managers - increase cable routing and airflow
- Integral and seamless integration of all products - all Legrand products can be easily mounted
- Airflow baffles for side breathing equipment - redirect air to maintain cold aisle-hot aisle separation

Flexibility

- Patented hex pattern sidewalls - allow infinite cable lacing locations
- Depth of channels ranging up to 30" deep - enables servers and switch mounting in channel rack
- Heights available up to 8' - more rack space in the same floor space





Data, Power & Control

125 Eugene O'Neill Drive
New London, CT 06320
800.934.5432
www.legrand.us