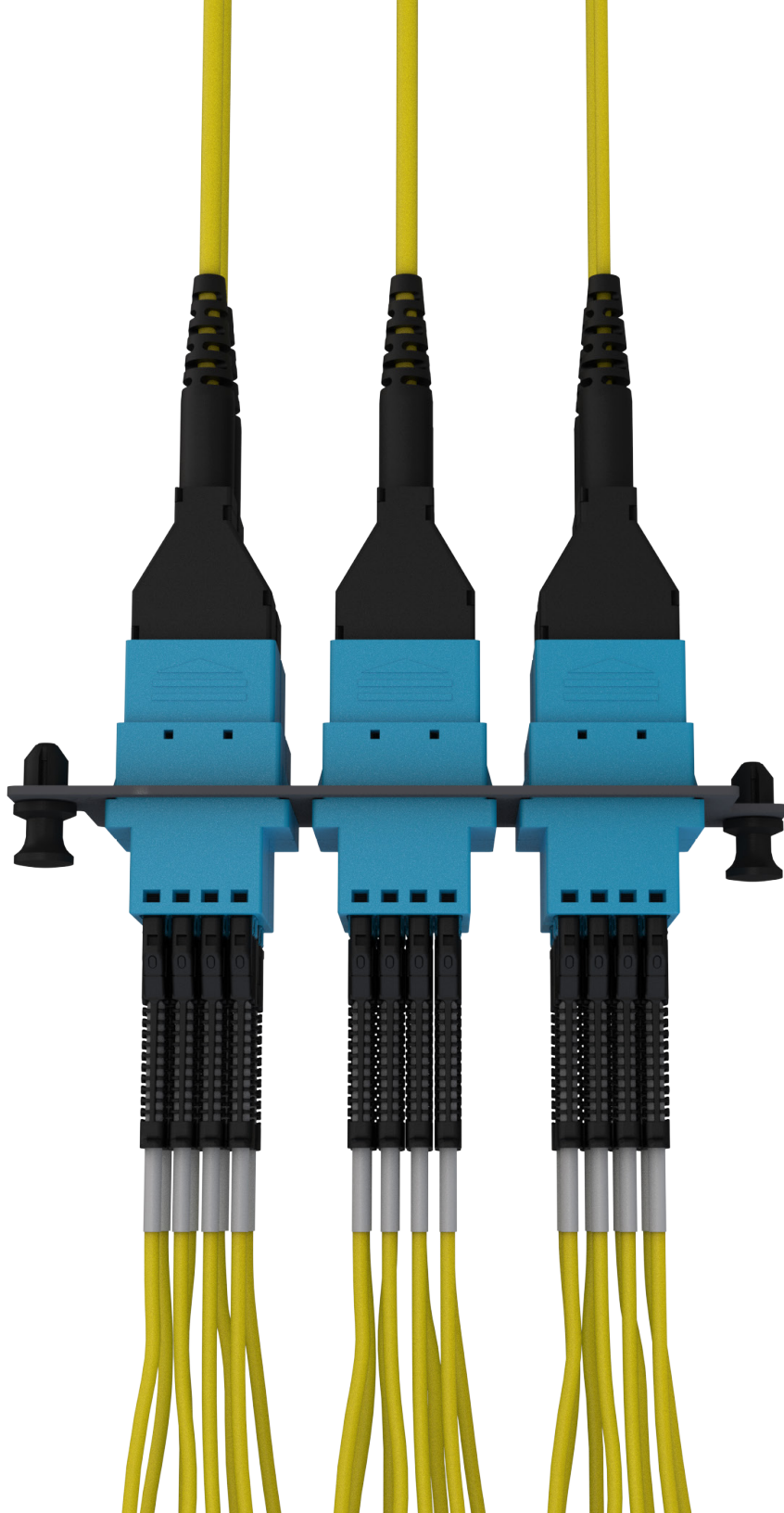


INFINIUM CORE PERFORMANCE LEVEL

Infinium acclAIM Fiber solutions

designed to be better.™



Cut **Cost.**
Cut **Complexity.**
Cut **Cassettes.**

INFINIUM *acclA/M* FIBER SOLUTION

Infinium *acclA/M* redefines connectivity by replacing pre-terminated cassette-based solutions with direct connections eliminating components, process, and cost. Infinium *acclA/M* delivers the only connectivity on the market with a near lossless link, almost unlimited scalability, and no gender considerations. The direct mating breakout and application defined polarity vastly improves density and flexibility and enables sustainable migration improving system life-cycle tremendously.

Minimize Loss - Maximize Optical Headroom

- Lowest loss pre-term Solution
- Minimize or eliminate need for splicing
- Maximize optical headroom to overcome barriers to performance

Design Smarter - Longer Lifecycle

- Simplicity of design combined with application-defined on-site polarity adjustment, fewer components, and near-lossless performance enables acclA/M to provide a multi-generational lifecycle with a single installation of a sustainable building asset for decades to come

Ultra-High Density Plus (UHD+)

- Make the most of each rack unit (RU) with UHD+ offering up to 192 fibers per RU (33% more than High Density)

Simplify Connectivity

- No gender considerations - no pins, just direct connections
- Direct-Mating Breakout - acclA/M connectors mate directly to an array of 2-fiber MDC duplex patch cords
- Application-Defined Polarity - polarity can be adapted to nearly any link configuration; preplanned, on-site, or on the fly with no options to determine when ordering or designing
- Improved accessibility - with the increased density of each connector and a smaller footprint enabled by acclA/M, there is more room to work on each panel

Reduce Labor - Lower Cost

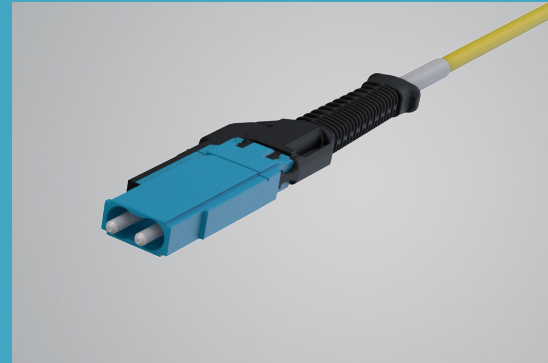
- 40% faster install
- 60% faster removal
- Single link testing after mating
- Faster moves adds & changes

Approaching Infinite Scalability

- Based on the simplified design, unparalleled performance, and architecture flexibility, Infinium acclA/M has an almost limitless migration path

Go Live Faster

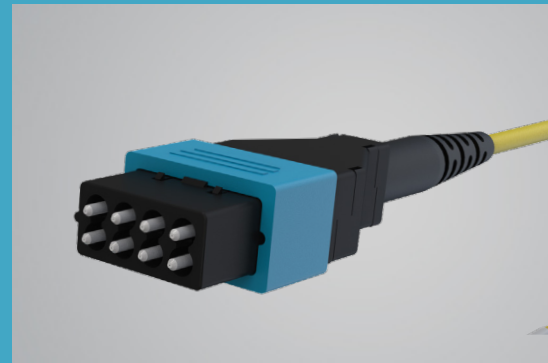
- Easy to stock and short lead times for conversion adapters enable rapid or emergency deployment



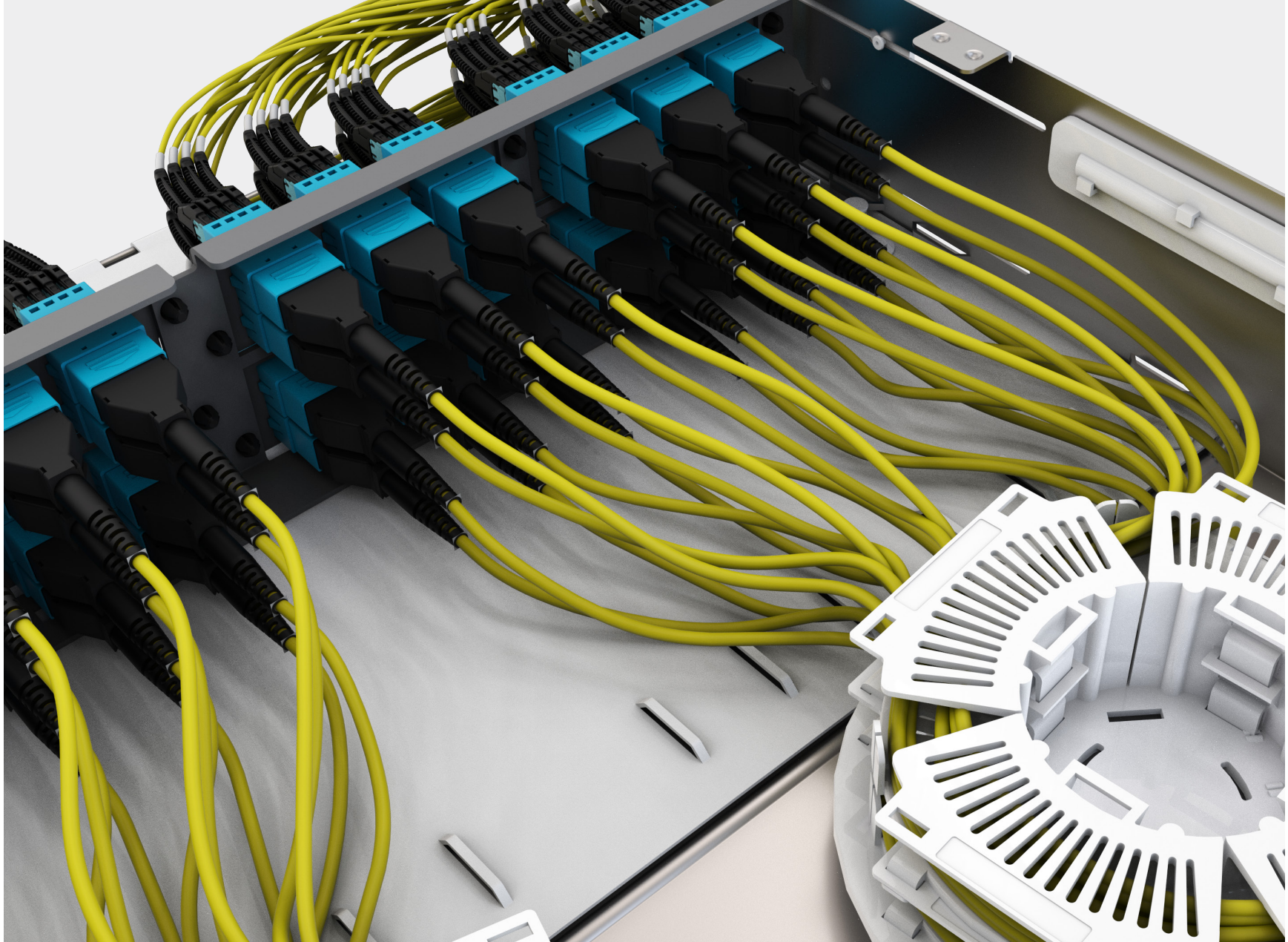
MDC CONNECTOR

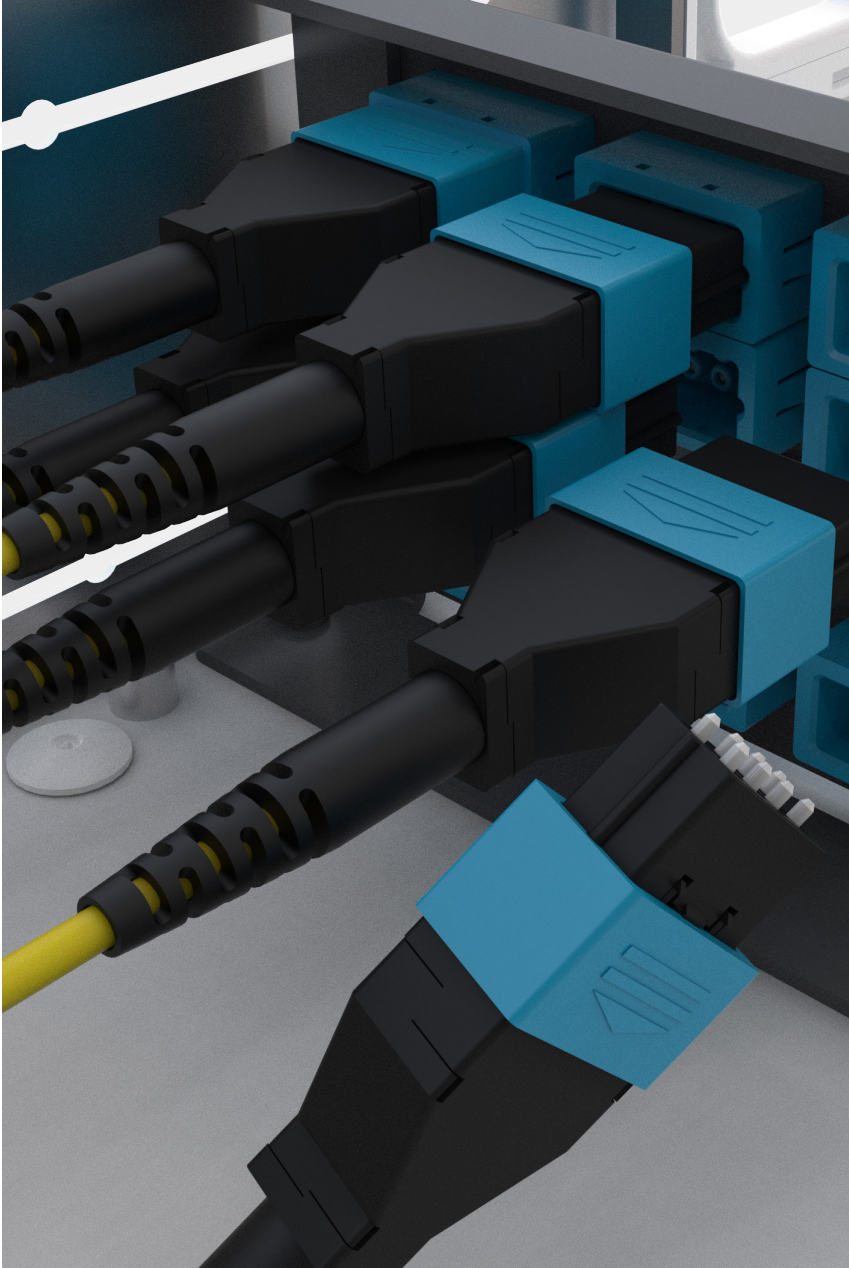


acclA/M CONVERSION ADAPTER

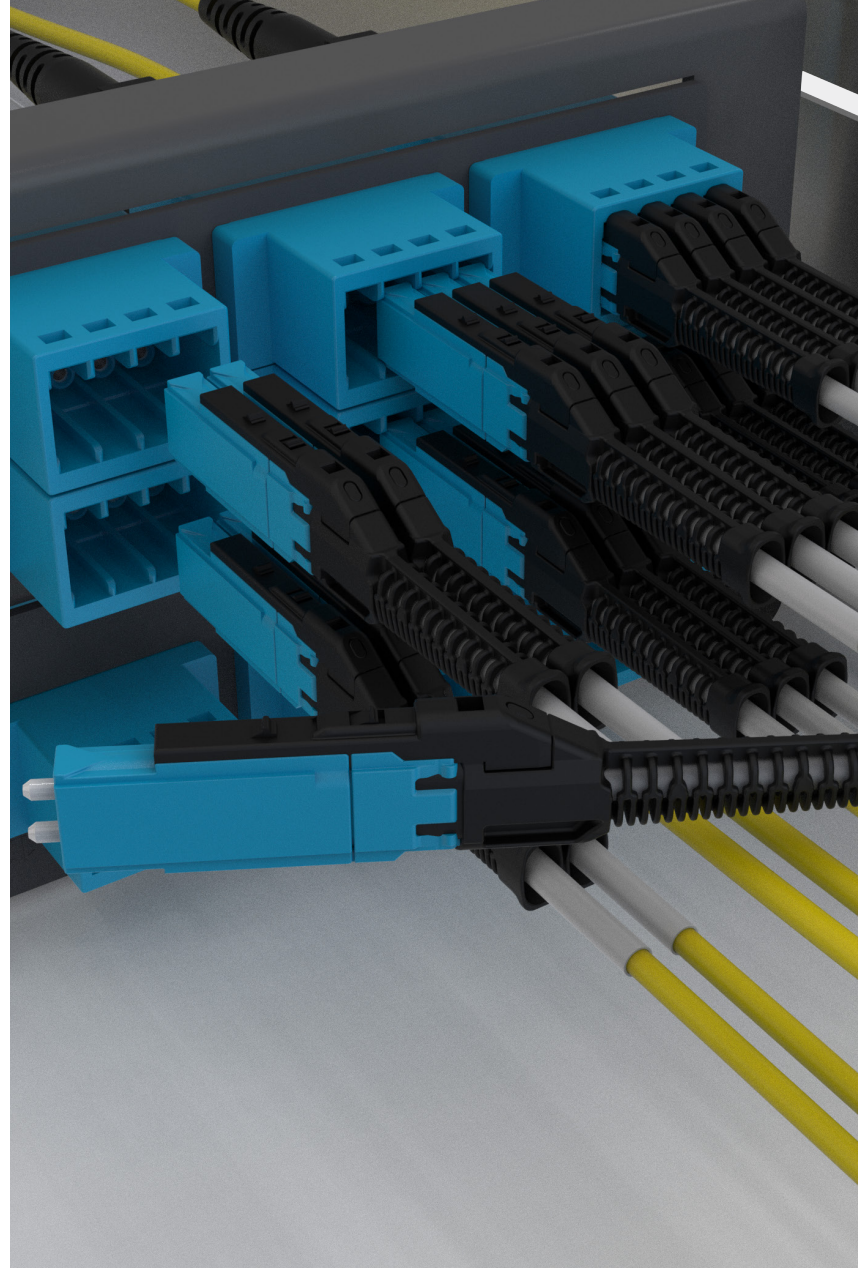


acclA/M CONNECTOR



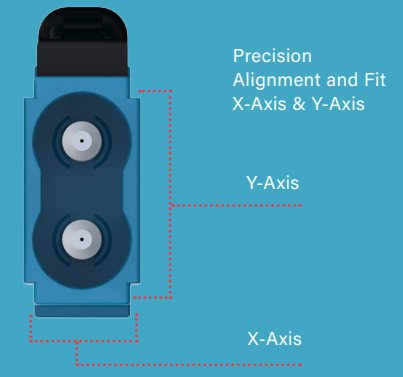
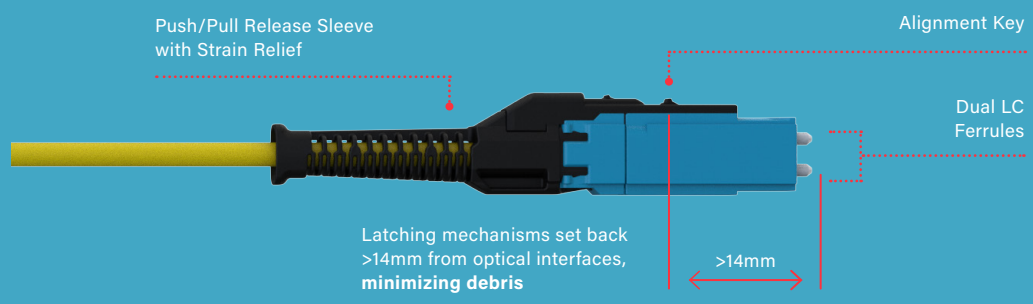
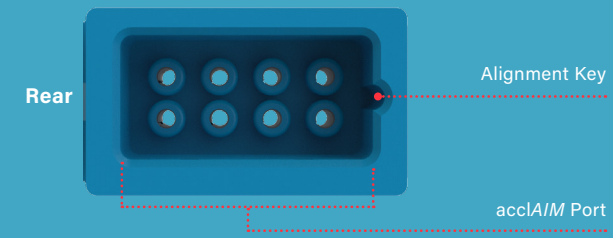
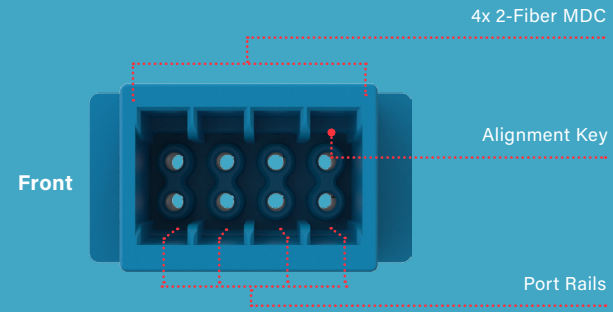
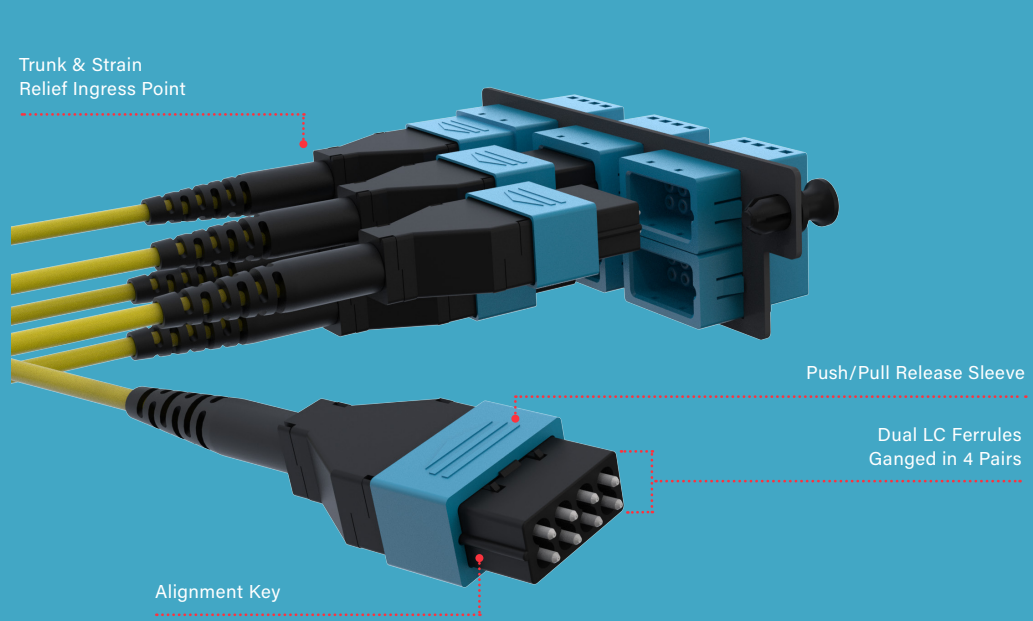


Infinium acclAIM Trunk



Infinium acclAIM Conversion
Adapter Panel and MDC Patch Cord

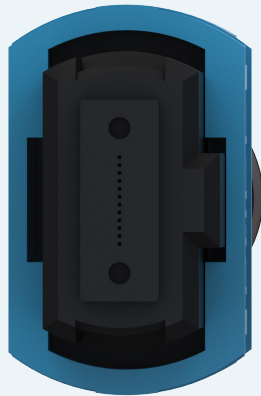
INFINIUM acclA/M – SOLUTION COMPONENTS



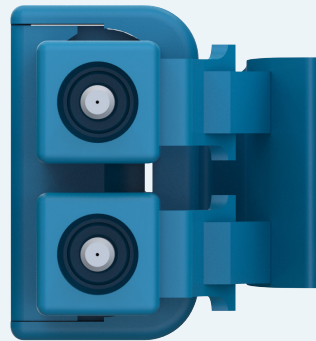
INFINIUM acclA/M – CONNECTOR COMPARISON

Infinium acclA/M utilizes a direct mating breakout – eliminating the need for a cassette to breakout multi-fiber cable.

Current Cassette Based Architecture



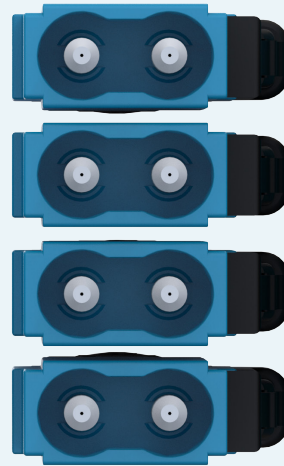
MPO/MTP



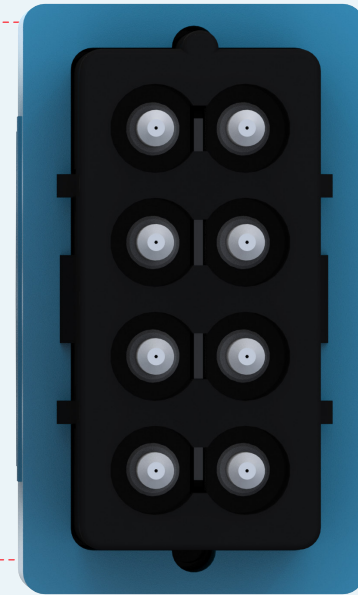
DUPLEX LC

SIZE COMPARISON
DIME MEASUREMENT: 0.705 IN / 17.91 MM

acclA/M Based Architecture



MDC (X4)



acclA/M



INFINIUM acclA/M – SIMPLIFIED INTERFACE WITH IMPROVED DENSITY

Current Cassette Based Architecture

3x 8F MTP/MPO
2x 12F MTP/MPO
Connectors (24F)

Transition/breakout from high density MTP connectors to individual fiber connectors (commonly required to connect electronics)

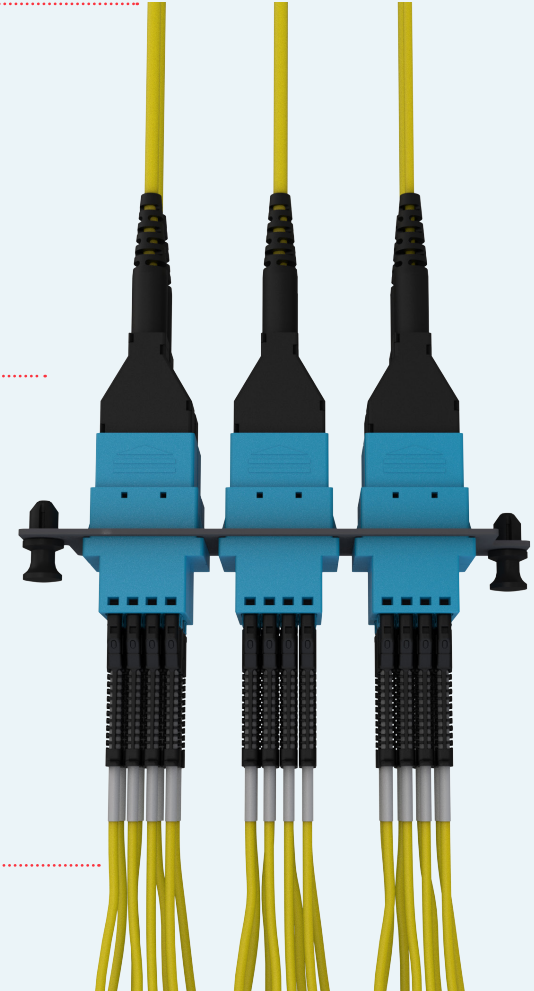


12x Duplex LC
Connectors (24F)

acclA/M Based Architecture

6x Infinium acclA/M Octal
Ferrule Connectors (48F)

Utilizes Direct Mating
ferrule to ferrule.
Simplifying Connectivity

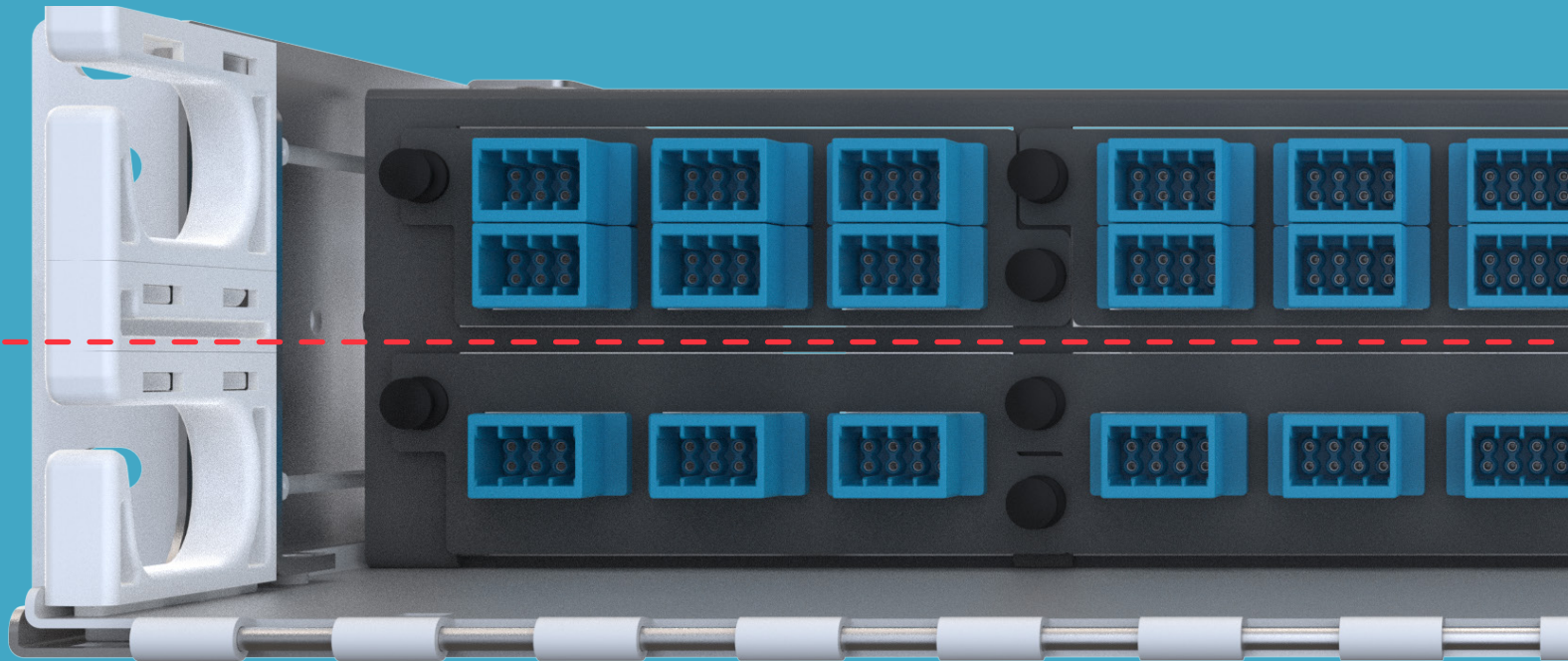


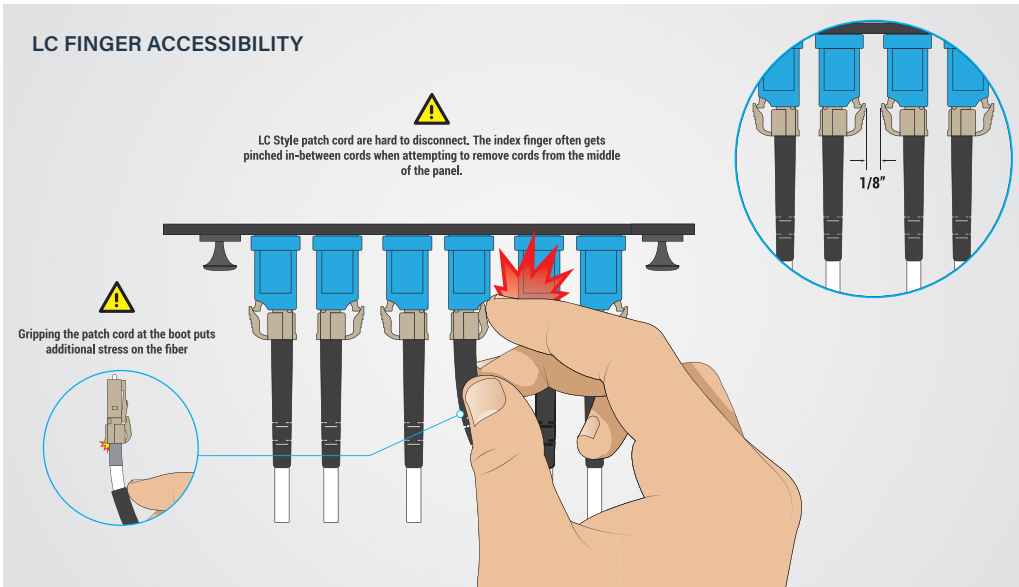
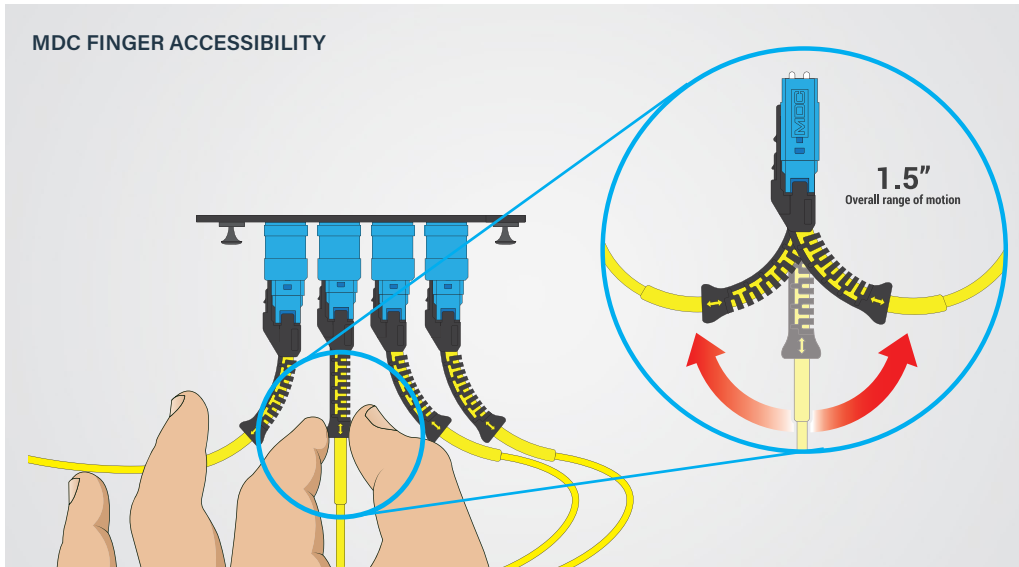
24x 2-Fiber MDC
Connectors (48F)

INFINIUM acclA/M – DENSITY

UHD+
Ultra-High Density Plus
192 Fibers/RU

HD
High Density
96 Fibers/RU





INFINIUM acclA/M – ERGONOMICS ADVANTAGE

- Easy grip and release connectors
- The acclA/M solution delivers more hand/finger clearance than LC Patching – acclA/M with MDC offers 1.5 in of space vs. 1/8 in of space with LC
- With LC connectors, technicians must reach almost an inch further into the cables to engage the latch vs. the acclA/M solution with MDC connectors
- Less force required for insertion and removal than current connectivity options

>40%

Faster Patch
Cable Install

>60%

Faster Patch
Cable Removal

TIME STUDIES



ERGONOMICS
TIME STUDY VIDEO



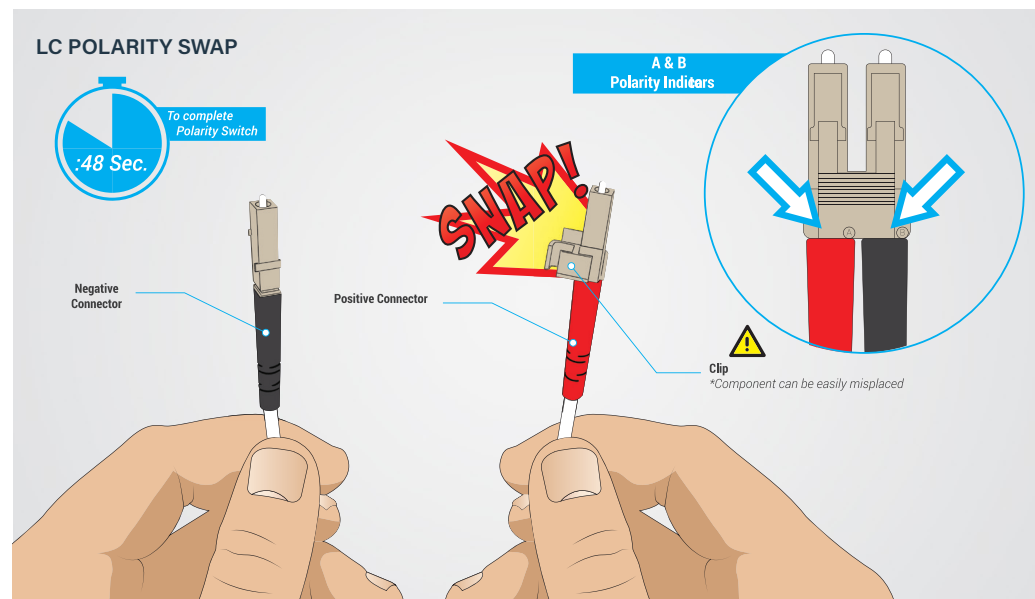
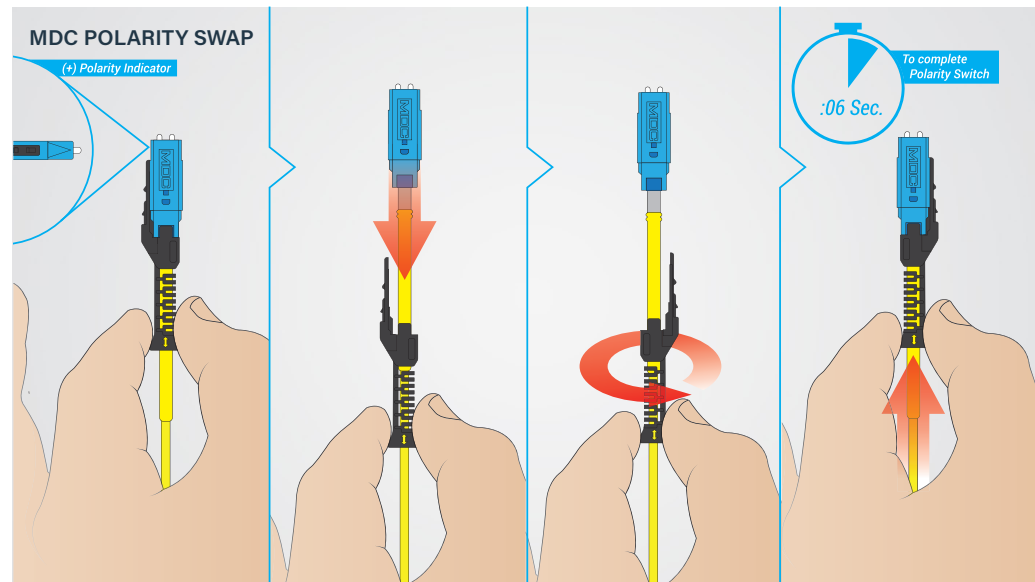
MID-PANEL
TIME STUDY VIDEO

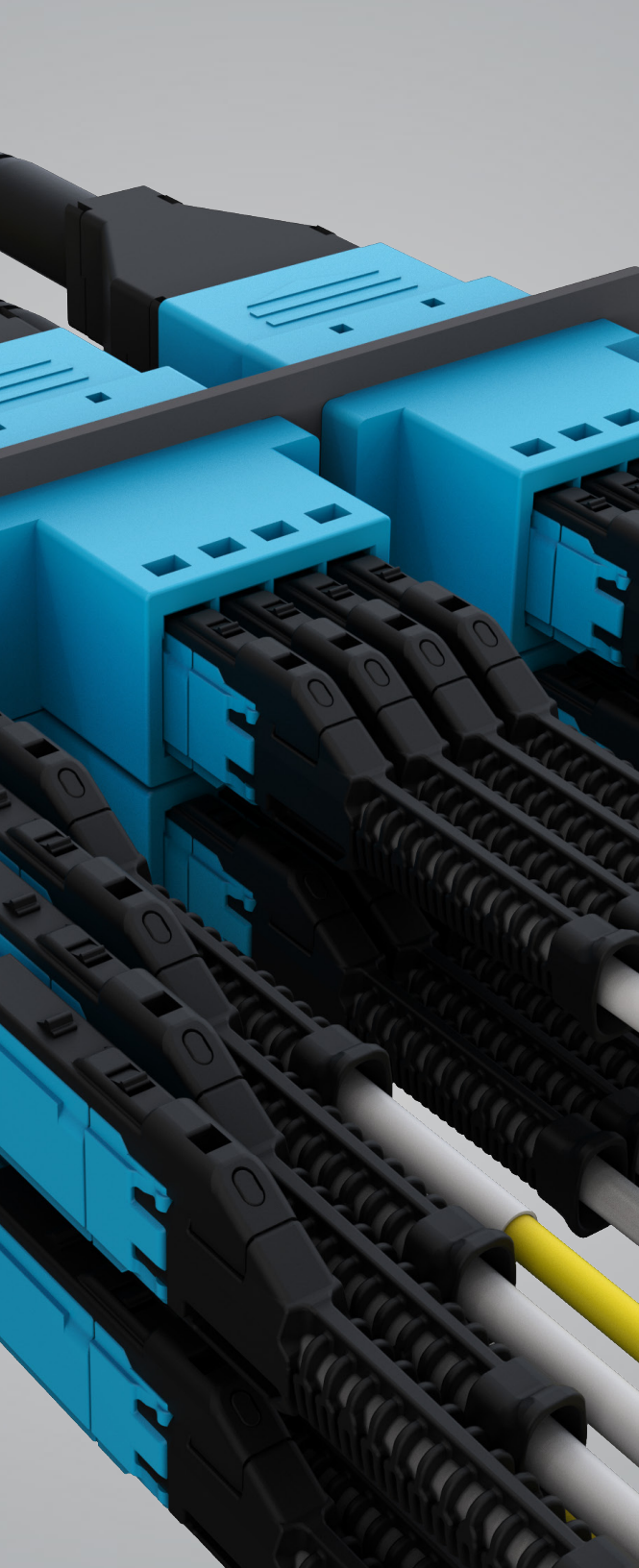
INFINIUM acclAIM – INSTALL, MAINTENANCE & TESTING ADVANTAGE

- Faster cable installs and removal
- acclAIM polarity is application-defined and can be adapted to nearly any link configuration; preplanned, on-site, or on the fly vs. cassettes which must be pre-planned or reordered to change polarity
- Patch cord polarity switching with acclAIM takes 6 seconds vs. LC Duplex which takes 48 with the potential of lost components – acclAIM solution with MDC patch cords saves 42 seconds on average vs. LC duplex and days faster than reordering a cassette to correct polarity
- No cassette to inspect before mating
- No front / rear connector troubleshooting – one connection point
- Adapters do not become obsolete if new grades of fiber are developed, can be reused indefinitely, and do not require delicate handling
- Testing is completed with a single link after mating vs. testing both sides of a cassette reducing significant time



MDC POLARITY TIME STUDY VIDEO



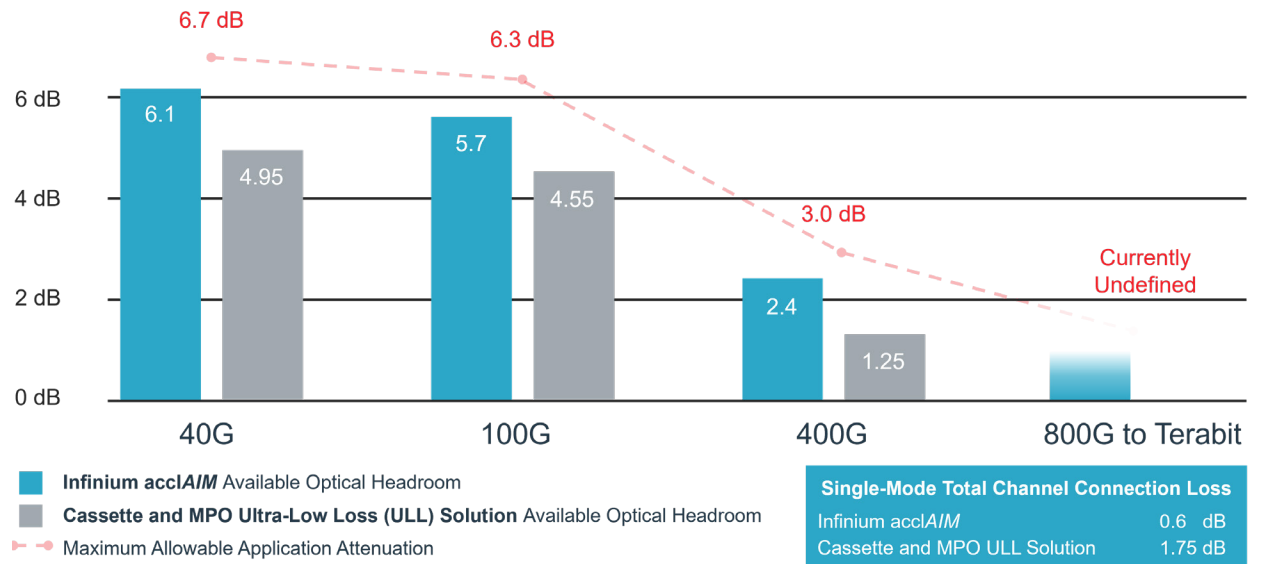


INFINIUM acclA/M – PERFORMANCE ADVANTAGE

Core Level Performance - Maximizing Optical Headroom

There is an inevitable correlation between maximizing optical performance margins (optical headroom) and optimizing overall costs from both an operational and procurement perspective – Infinium acclA/M delivers dramatically more optical headroom than any other pre-terminated solution!

Performance Advantage



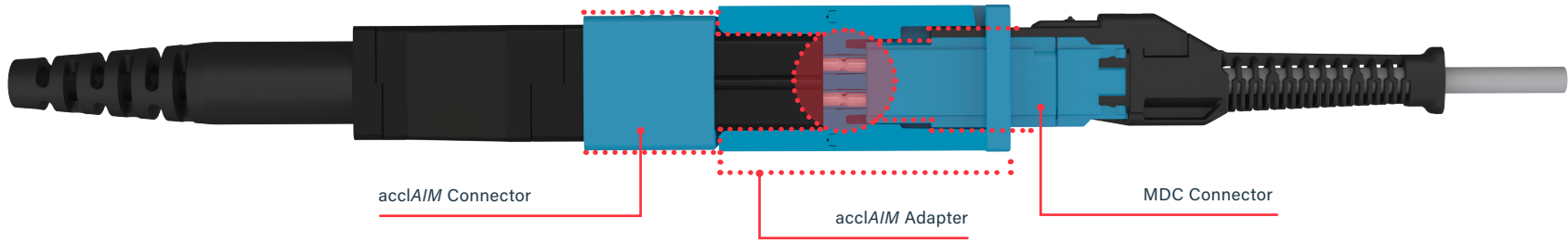
	Industry Standard Pre-Terminated Solution	Infinium acclA/M Core Solution Improvement
Bit Error Rate (errors over time)	2.35E-07	> 3.6 x
Total Link Loss (dB)	7.20 dB	> 1.0 dB
FEC Corrections (codewords)	5.93E+05	> 1.77 x

[Quantum-Effect-Paper - multiLane](#)

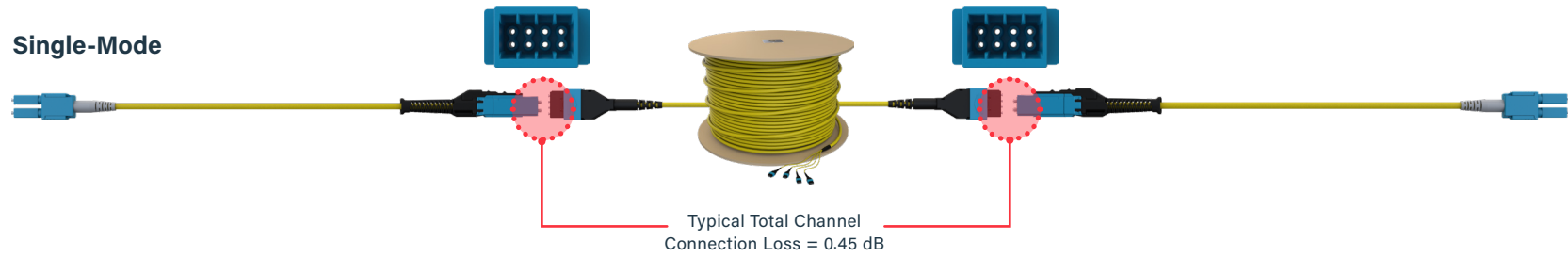
<https://multilaneinc.com/wp-content/uploads/2021/05/Quantum-Effect-Paper.pdf>

INFINIUM acclAIM – PERFORMANCE ADVANTAGE

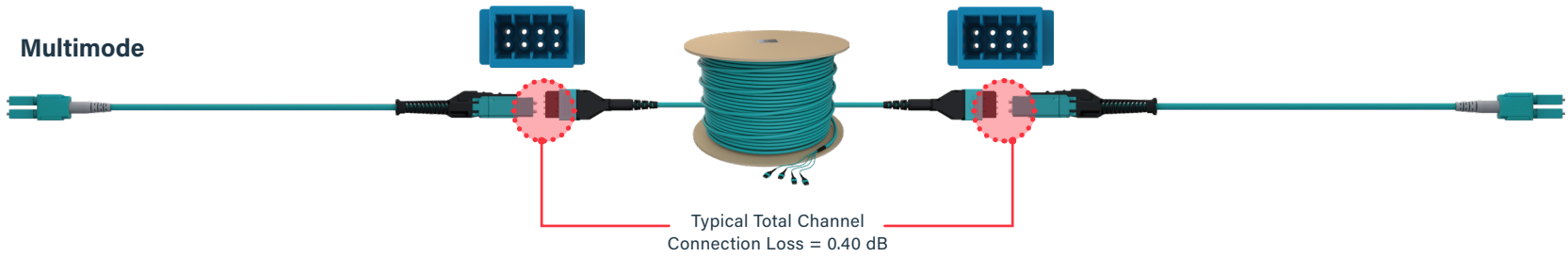
Core Level Performance



Single-Mode



Multimode



INFINIUM acclA/M SOLUTION – ORDERING INFORMATION

Infinium acclA/M Conversion Adapters

Item Number	Connector Style	Fiber Type	Fiber / Adapter Count	Color
HDFP-AME24LC	acclA/M / MDC (4)	OM4 (MM)	24 (3 - Adapters)	Aqua
HDFP-AME24QC	acclA/M / MDC (4)	OM5 (MM)	24 (3 - Adapters)	Lime
HDFP-AME24AC	acclA/M / MDC (4)	OS2 (SM)	24 (3 - Adapters)	Blue
HDFP-AME48LC	acclA/M / MDC (4)	OM4 (MM)	48 (6 - Adapters)	Aqua
HDFP-AME48QC	acclA/M / MDC (4)	OM5 (MM)	48 (6 - Adapters)	Lime
HDFP-AME48AC	acclA/M / MDC (4)	OS2 (SM)	48 (6 - Adapters)	Blue



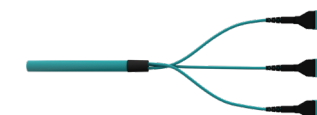
HDFP-AME24LC



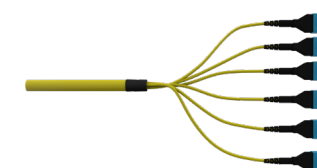
HDFP-AME48AC

Infinium acclA/M Pre-Configured Trunk Cable Assemblies

Item Number	Description	Fiber Type	Fiber Count	Polarity	Jacket Type	Length	UOM
CAMAMC37S5JMM1xxxM(F)	Infinium Core	OS2	8	C	Plenum	xxx	M / F
CAMAMC37S5EMM1xxxM(F)	Infinium Core	OM4	8	C	Plenum	xxx	M / F
CAMAMC37S5HMM1xxxM(F)	Infinium Core	OM5	8	C	Plenum	xxx	M / F
CAMAMC63SAJMM1xxxM(F)	Infinium Core	OS2	24	C	Plenum	xxx	M / F
CAMAMC63SAEMM1xxxM(F)	Infinium Core	OM4	24	C	Plenum	xxx	M / F
CAMAMC63SAHMM1xxxM(F)	Infinium Core	OM5	24	C	Plenum	xxx	M / F
CAMAMC63SEJMM1xxxM(F)	Infinium Core	OS2	48	C	Plenum	xxx	M / F
CAMAMC63SEEMM1xxxM(F)	Infinium Core	OM4	48	C	Plenum	xxx	M / F
CAMAMC63SEHMM1xxxM(F)	Infinium Core	OM5	48	C	Plenum	xxx	M / F



CAMAMC63SAEMM1xxxM(F)



CAMAMC63SEJMM1xxxM(F)



INFINIUM acclA/M
PAGE

INFINIUM acclA/M SOLUTION – ORDERING INFORMATION

Infinium acclA/M Pre-Configured MDC Patch Cords

MDC Patch Cords	Performance	Fiber Type	Connector A	Connector B	Polarity	Jacket Type	Length	UOM
L1-802JA2EAB0xxxM(F)	Infinium Core	OM4	LC Uniboot	MDC	Method A	Plenum	xxx	M / F
L1-802JA2HAB0xxxM(F)	Infinium Core	OM5	LC Uniboot	MDC	Method A	Plenum	xxx	M / F
L1-802JA2JYB0xxxM(F)	Infinium Core	OS2	LC Uniboot	MDC	Method A	Plenum	xxx	M / F
L1-2J2JA2EAB0xxxM(F)	Infinium Core	OM4	MDC	MDC	Method A	Plenum	xxx	M / F
L1-2J2JA2HAB0xxxM(F)	Infinium Core	OM5	MDC	MDC	Method A	Plenum	xxx	M / F
L1-2J2JA2JYB0xxxM(F)	Infinium Core	OS2	MDC	MDC	Method A	Plenum	xxx	M / F
L3-802JA2EAB0xxxM(F)	Infinium Ultra	OM4	LC Uniboot	MDC	Method A	Plenum	xxx	M / F
L3-802JA2HAB0xxxM(F)	Infinium Ultra	OM5	LC Uniboot	MDC	Method A	Plenum	xxx	M / F
L3-802JA2JYB0xxxM(F)	Infinium Ultra	OS2	LC Uniboot	MDC	Method A	Plenum	xxx	M / F
L3-2J2JA2EAB0xxxM(F)	Infinium Ultra	OM4	MDC	MDC	Method A	Plenum	xxx	M / F
L3-2J2JA2HAB0xxxM(F)	Infinium Ultra	OM5	MDC	MDC	Method A	Plenum	xxx	M / F
L3-2J2JA2JYB0xxxM(F)	Infinium Ultra	OS2	MDC	MDC	Method A	Plenum	xxx	M / F

NOTE: For length, replace XXX with three digit length measure (example 003 = 3, 010 = 10, or 100 = 100)
For Unit of Measure (UOM), select (M) for Meters, or (F) for Feet

Infinium HD-E Enclosure - M4 Drawer Face

Item Number	Description
INFC01U-M4-E	Infinium HD-E Rack Mount Enclosure 1U, M4 Drawer Face
INFC02U-M4-E	Infinium HD-E Rack Mount Enclosure 2U, M4 Drawer Face
INFC04U-M4-E	Infinium HD-E Rack Mount Enclosure 4U, M4 Drawer Face



INFC02U-M4-E

High-Density Flush Mounting Fiber Patch Panel

Item Number	Description
RFPHD01U	High-Density Flush Mounting Fiber Patch Panel, 1U
RFPHD02U	High-Density Flush Mounting Fiber Patch Panel, 2U



RFPHD02U



Data, Power & Control

60 Woodlawn Street
West Hartford, CT 06110
800.934.5432
www.legrand.us

FOLLOW US

