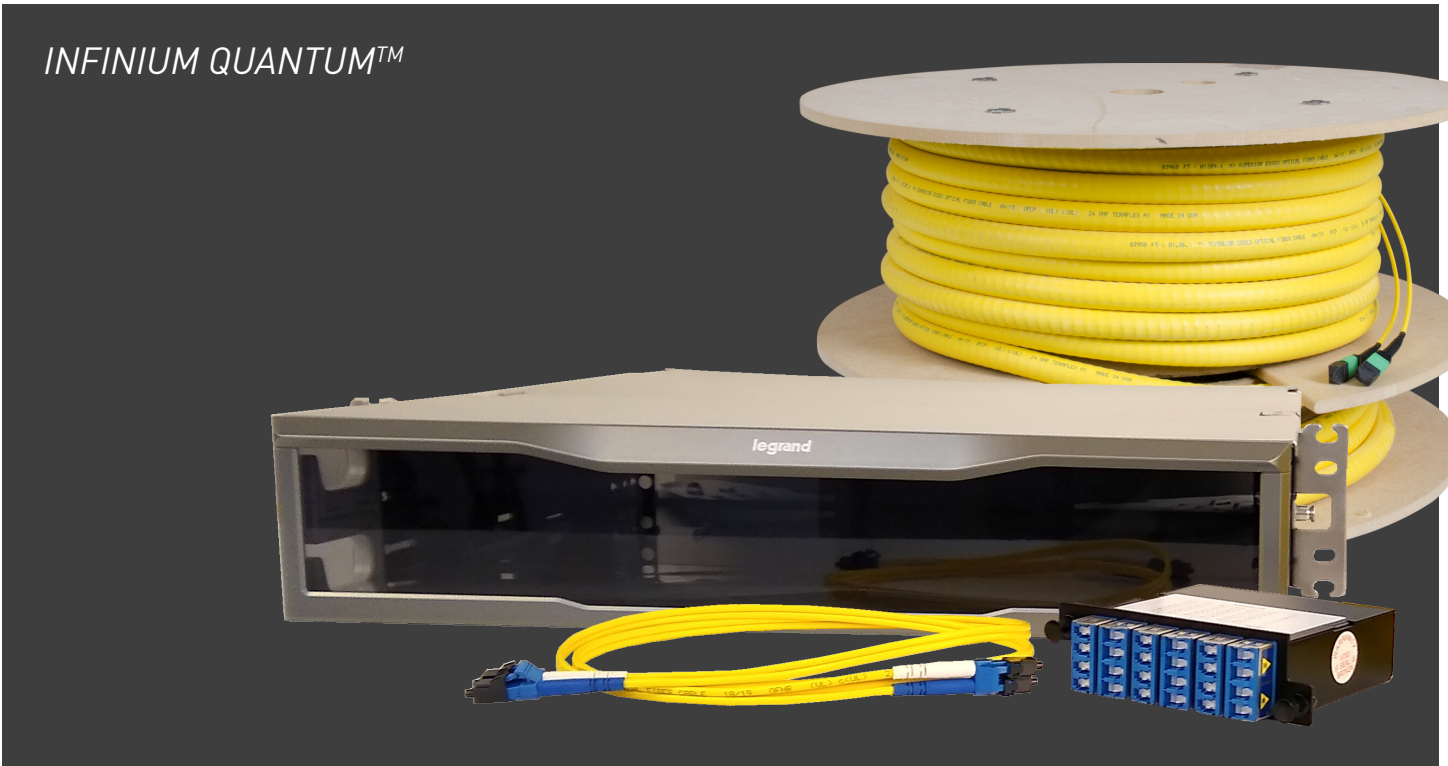
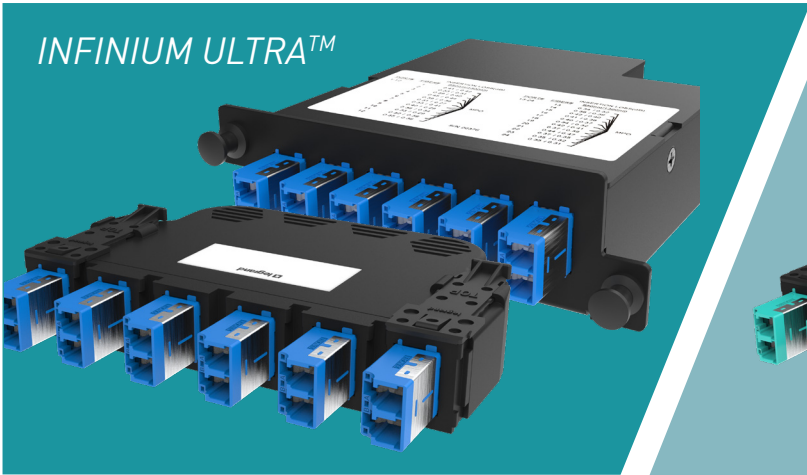


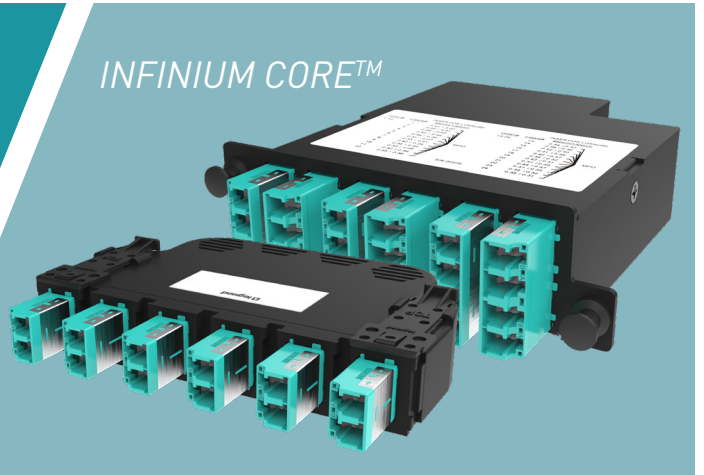
INFINIUM QUANTUM™



INFINIUM ULTRA™



INFINIUM CORE™



# INFINIUM FIBER **LEAD OFFERING**

designed to be better.™



# INFINIUM QUANTUM™

## Lowest Total Channel Connection Loss –

67% Improvement Over Standard Systems

- Single-mode total channel connection loss: 0.75dB
- Single-mode total channel connection return loss: 49dB
- Multimode total channel connection loss 0.75dB
- Multimode total channel connection return loss: 34dB

## Sustainability –

Corporate Social Responsibility

- Reduce overall energy consumption –up to 30% reduction in power consumption for transceivers
- High performance infrastructure
- Environmental stewardship
- Contribute to LEED points

## Future Proofing –

Open Path to 400G and Beyond

- Reducing or eliminating the need to replace link to meet demands of 400G and beyond
- Reduce need for fusion splicing to obtain low link loss
- Ability to add cross connections, signal drops, splitting, or switching components into the link for a particular transmission distance

## Innovative Features –

Simplify Install, Management & Configurability

- Options for 12 and 24 fiber connectivity
- Better accessibility and visibility inside the enclosure

*\*Only includes the total loss from the connections in the channel. Total channel loss includes cabling loss. Cable loss allowance for single-mode is 0.4 dB/km @1310nm and @1550nm for patch cords and 0.5 dB/km @1310nm and @1550nm for trunks. Cable loss allowance for multimode is 3.0 dB/km @850nm and 1.5 dB/km @1300nm.*

## INFINIUM QUANTUM™ HDJ MODULAR PANEL SYSTEMS

### Infinium Quantum HDCA Single-Mode 12 Fiber MTP to Duplex LC

Part Numbers	Description	Fiber #	Polarity	Form Factor
L4-3535B20Yx1xxxx	Infinium Quantum LC to LC Duplex DFX Fiber OS2 Yellow Patch	2	A-B	Duplex
LMH-LC12J-1A3UN	Infinium Quantum HDCA Cassette, 12 Fiber, LC Duplex to MTP(M), OS2, Universal Polarity	12	Universal	HDJ
Q7171Bxxxx0xxxxxxx	Infinium Quantum OS2 Non-Pinned MTP Trunk		B:1-1	Trunk

### Infinium Quantum HDCA Multimode 12 Fiber MTP to Duplex LC

Part Numbers	Description	Fiber #	Polarity	Form Factor
L4-3535B2EAx1xxxx	Infinium Quantum LC to LC Duplex DFX Fiber OM4 Aqua Patch	2	A-B	Duplex
LMH-LC12H-1A4UN	Infinium Quantum HDCA Cassette, 12 Fiber, LC Duplex to MTP(M), OM4, Universal Polarity	12	Universal	HDJ
Q1E1EBxxxxExxxxxxx	Infinium Quantum OM4 Non-Pinned MTP Trunk		B:1-1	Trunk

## INFINIUM QUANTUM™ M4 SYSTEMS

### Infinium Quantum M4 Single-Mode 12 Fiber MTP to Duplex LC

Part Numbers	Description	Fiber #	Polarity	Form Factor
L4-3535B20Yx1xxxx	Infinium Quantum LC to LC Duplex DFX Fiber OS2 Yellow Patch	2	A-B	Duplex
LM4-LC12J-1A3UN	Infinium Quantum M4 Cassette, 12 Fiber, LC Duplex to MTP(M), OS2, Universal Polarity	12	Universal	M4
Q7171Bxxxx0xxxxxxx	Infinium Quantum OS2 Non-Pinned MTP Trunk		B:1-1	Trunk

### Infinium Quantum M4 Single-Mode 24 Fiber (2 MTP) to Quad LC

Part Numbers	Description	Fiber #	Polarity	Form Factor
L4-3535B20Yx1xxxx	Infinium Quantum LC to LC Duplex DFX Fiber OS2 Yellow Patch	2	A-B	Duplex
LM4-LC24J-2A3UN	Infinium Quantum M4 Cassette, 24 Fiber, LC Quad to 2 MTP(M), OS2, Universal Polarity	24	Universal	M4
Q7171Bxxxx0xxxxxxx	Infinium Quantum OS2 Non-Pinned MTP Trunk		B:1-1	Trunk

### Infinium Quantum M4 Multimode 12 Fiber MTP to Duplex LC

Part Numbers	Description	Fiber #	Polarity	Form Factor
L4-3535B2EAx1xxxx	Infinium Quantum LC to LC Duplex DFX Fiber OM4 Aqua Patch	2	A-B	Duplex
LM4-LC12H-1A4UN	Infinium Quantum M4 Cassette, 12 Fiber, LC Duplex to MTP(M), OM4, Universal Polarity	12	Universal	M4
Q1E1EBxxxxExxxxxxx	Infinium Quantum OM4 Non-Pinned MTP Trunk		B:1-1	Trunk

### Infinium Quantum M4 Multimode 24 Fiber (2 MTP) to Quad LC

Part Numbers	Description	Fiber #	Polarity	Form Factor
L4-3535B2EAx1xxxx	Infinium Quantum LC to LC Duplex DFX Fiber OM4 Aqua Patch	2	A-B	Duplex
LM4-LC24H-2A4UN	Infinium Quantum M4 Cassette, 24 Fiber, LC Quad to 2 MTP(M), OM4, Universal Polarity	24	Universal	M4
Q1E1EBxxxxExxxxxxx	Infinium Quantum OM4 Non-Pinned MTP Trunk		B:1-1	Trunk

# INFINIUM ULTRA™

- **Ultra Low Loss System:** When combined with Infinium Ultra Trunks and Infinium Ultra Patch Cords
  - Single-mode total channel connection loss: 1.2 dB
  - Single-mode total channel connection return loss: 49 dB
  - Multimode total channel connection loss: 1.0 dB
  - Multimode total channel connection return loss: 19 dB
- **High Density:** 12 or 24-fiber cassette compatible with Infinium HD M4 Enclosures
- **Versatile Installation:** Infinium Modular Panel enables mixed media installations
- **Fiber Type:** Supports either Single-mode OS2 or Multimode Infinium Ultra fiber
- **Polarization:** Universal



## INFINIUM ULTRA™ HDJ MODULAR PANEL SYSTEMS

### Infinium Ultra HDJ Single-Mode 12 Fiber MTP to Duplex LC

Part Numbers	Description	Fiber #	Polarity	Form Factor
L3-0101B2JYx1xxxx	Infinium Ultra LC to LC Duplex DFX Fiber OS2 Yellow Patch	2	A-B	Duplex
LMH-LC12J-1A2UN	Infinium Ultra HDCA Cassette, 12 Fiber, LC Duplex to MTP(M), OS2, Universal Polarity	12	Universal	HDJ
U7171BxxxxJxxxxxxx	Infinium Ultra OS2 Non-Pinned MTP Trunk		B:1-1	Trunk

### Infinium Ultra HDJ Multimode 12 Fiber MTP to Duplex LC

Part Numbers	Description	Fiber #	Polarity	Form Factor
L3-0101B2EAx1xxxx	Infinium Ultra LC to LC Duplex DFX Fiber OM4 Aqua Patch	2	A-B	Duplex
LMH-LC12H	Infinium Ultra HDCA Cassette, 12 Fiber, LC Duplex to MTP(M), OM4, Universal Polarity	12	Universal	HDJ
U5555BxxxxExxxxxxx	Infinium Ultra OM4 Non-Pinned MTP Trunk		B:1-1	Trunk

## INFINIUM ULTRA™ M4 SYSTEMS

### Infinium Ultra M4 Single-Mode 12 Fiber MTP to Duplex LC

Part Numbers	Description	Fiber #	Polarity	Form Factor
L3-0101B2JYx1xxxx	Infinium Ultra LC to LC Duplex DFX Fiber OS2 Yellow Patch	2	A-B	Duplex
LM4-LC12J-1A2UN	Infinium Ultra M4 Cassette, 12 Fiber, LC Duplex to MTP(M), OS2, Universal Polarity	12	Universal	M4
U7171BxxxxJxxxxxxx	Infinium Ultra OS2 Non-Pinned MTP Trunk		B:1-1	Trunk

### Infinium Ultra M4 Single-Mode 24 Fiber (2 MTP) to Quad LC

Part Numbers	Description	Fiber #	Polarity	Form Factor
L3-0101B2JYx1xxxx	Infinium Ultra LC to LC Duplex DFX Fiber OS2 Yellow Patch	2	A-B	Duplex
LM4-LC24J-2A2UN	Infinium Ultra M4 Cassette, 24 Fiber, LC Quad to 2 MTP(M), OS2, Universal Polarity	24	Universal	M4
U7171BxxxxJxxxxxxx	Infinium Ultra OS2 Non-Pinned MTP Trunk		B:1-1	Trunk

### Infinium Ultra M4 Multimode 12 Fiber MTP to Duplex LC

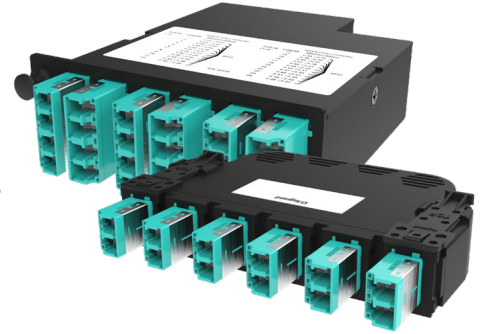
Part Numbers	Description	Fiber #	Polarity	Form Factor
L3-0101B2EAx1xxxx	Infinium Ultra LC to LC Duplex DFX Fiber OM4 Aqua Patch	2	A-B	Duplex
LM4-LC12H	Infinium Ultra M4 Cassette, 12 Fiber, LC Duplex to MTP(M), OM4, Universal Polarity	12	Universal	M4
U5555BxxxxExxxxxxx	Infinium Ultra OM4 Non-Pinned MTP Trunk		B:1-1	Trunk

### Infinium Ultra M4 Multimode 24 Fiber (2 MTP) to Quad LC

Part Numbers	Description	Fiber #	Polarity	Form Factor
L3-0101B2EAx1xxxx	Infinium Ultra LC to LC Duplex DFX Fiber OM4 Aqua Patch	2	A-B	Duplex
LM4-LC24H	Infinium Ultra M4 Cassette, 24 Fiber, LC Quad to 2 MTP(M), OM4, Universal Polarity	24	Universal	M4
U5555BxxxxExxxxxxx	Infinium Ultra OM4 Non-Pinned MTP Trunk		B:1-1	Trunk

# INFINIUM CORE™

- **Low Loss System:** When combined with Infinium Core Trunks and Infinium Core Patch Cords
  - Single-mode total channel connection loss: 2.1 dB
  - Single-mode total channel connection return loss: 49 dB
  - Multimode total channel connection loss: 2.5 dB
  - Multimode total channel connection return loss: 19 dB
- **High Density:** 12 or 24-fiber cassette compatible with Infinium HD M4 Enclosures
- **Versatile Installation:** Infinium HDJ Modular Panel enables mixed media installations
- **Standard Density:** 12-fiber cassette compatible with Q-Series M2 Enclosures
- **Fiber Type:** Supports either Single-mode OS2 or Multimode Infinium Core fiber
- **Polarization:** Universal



## INFINIUM CORE™ HDJ MODULAR PANEL SYSTEMS

### Infinium Core HDJ Single-Mode 12 Fiber MTP to Duplex LC

Part Numbers	Description	Fiber #	Polarity	Form Factor
L1-0101B2JYx0xxxx	Infinium Core LC to LC Duplex DFX Fiber OS2 Yellow Patch	2	A-B	Duplex
LMH-LC12J	Infinium Core HDCA Cassette, 12 Fiber, LC Duplex to MTP(M), OS2, Universal Polarity	12	Universal	HDJ
C6363BxxxxJxxxxxxx	Infinium Core OS2 Non-Pinned MTP Trunk		B:1-1	Trunk

### Infinium Core HDJ Multimode 12 Fiber MTP to Duplex LC

Part Numbers	Description	Fiber #	Polarity	Form Factor
L1-0101B2EAx0xxxx	Infinium Core LC to LC Duplex DFX Fiber OM4 Aqua Patch	2	A-B	Duplex
LMH-LC12H-1A1UN	Infinium Core HDCA Cassette, 12 Fiber, LC Duplex to MTP(M), OM4, Universal Polarity	12	Universal	HDJ
C4747BxxxxExxxxxxx	Infinium Core OM4 Non-Pinned MTP Trunk		B:1-1	Trunk

## INFINIUM CORE™ M4 SYSTEMS

### Infinium Core M4 Single-Mode 12 Fiber MTP to Duplex LC

Part Numbers	Description	Fiber #	Polarity	Form Factor
L1-0101B2JYx0xxxx	Infinium Core LC to LC Duplex DFX Fiber OS2 Yellow Patch	2	A-B	Duplex
LM4-LC12J	Infinium Core M4 Cassette, 12 Fiber, LC Duplex to MTP(M), OS2, Universal Polarity	12	Universal	M4
C6363BxxxxJxxxxxxx	Infinium Core OS2 Non-Pinned MTP Trunk		B:1-1	Trunk

### Infinium Core M4 Single-Mode 24 Fiber (2 MTP) to Quad LC

Part Numbers	Description	Fiber #	Polarity	Form Factor
L1-0101B2JYx0xxxx	Infinium Core LC to LC Duplex DFX Fiber OS2 Yellow Patch	2	A-B	Duplex
LM4-LC24J	Infinium Core M4 Cassette, 24 Fiber, LC Quad to 2 MTP(M), OS2, Universal Polarity	24	Universal	M4
C6363BxxxxJxxxxxxx	Infinium Core OS2 Non-Pinned MTP Trunk		B:1-1	Trunk

### Infinium Core M4 Multimode 12 Fiber MTP to Duplex LC

Part Numbers	Description	Fiber #	Polarity	Form Factor
L1-0101B2EAx0xxxx	Infinium Core LC to LC Duplex DFX Fiber OM4 Aqua Patch	2	A-B	Duplex
LM4-LC12H-1A1UN	Infinium Core M4 Cassette, 12 Fiber, LC Duplex to MTP(M), OM4, Universal Polarity	12	Universal	M4
C4747BxxxxExxxxxxx	Infinium Core OM4 Non-Pinned MTP Trunk		B:1-1	Trunk

### Infinium Core M4 Multimode 24 Fiber (2 MTP) to Quad LC

Part Numbers	Description	Fiber #	Polarity	Form Factor
L1-0101B2EAx0xxxx	Infinium Core LC to LC Duplex DFX Fiber OM4 Aqua Patch	2	A-B	Duplex
LM4-LC24H-2A1UN	Infinium Core M4 Cassette, 24 Fiber, LC Quad to 2 MTP(M), OM4, Universal Polarity	24	Universal	M4
C4747BxxxxExxxxxxx	Infinium Core OM4 Non-Pinned MTP Trunk		B:1-1	Trunk

## INFINIUM CORE™ M2 SYSTEMS

### Infinium Core M2 Single-Mode 12 Fiber MTP to Duplex LC

Part Numbers	Description	Fiber #	Polarity	Form Factor
L1-0101B2JYx0xxxx	Infinium Core LC to LC Duplex DFX Fiber OS2 Yellow Patch	2	A-B	Duplex
LM2-LC12J	Infinium Core M2 Cassette, 12 Fiber, LC Duplex to MTP(M), OS2, Universal Polarity	12	Universal	M2
C6363BxxxxJxxxxxxx	Infinium Core OS2 Non-Pinned MTP Trunk		B:1-1	Trunk

### Infinium Core M2 Single-Mode 24 Fiber (2 MTP) to Quad LC

Part Numbers	Description	Fiber #	Polarity	Form Factor
L1-0101B2JYx0xxxx	Infinium Core LC to LC Duplex DFX Fiber OS2 Yellow Patch	2	A-B	Duplex
LM4-LC24J	Infinium Core M2 Cassette, 24 Fiber, LC Quad to 2 MTP(M), OS2, Universal Polarity	24	Universal	M2
C6363BxxxxJxxxxxxx	Infinium Core OS2 Non-Pinned MTP Trunk		B:1-1	Trunk

### Infinium Core M2 Multimode 12 Fiber MTP to Duplex LC

Part Numbers	Description	Fiber #	Polarity	Form Factor
L1-0101B2EAx0xxxx	Infinium Core LC to LC Duplex DFX Fiber OM4 Aqua Patch	2	A-B	Duplex
LM2-LC12H	Infinium Core M2 Cassette, 12 Fiber, LC Duplex to MTP(M), OM4, Universal Polarity	12	Universal	M2
C4747BxxxxExxxxxxx	Infinium Core OM4 Non-Pinned MTP Trunk		B:1-1	Trunk

### Infinium Core M2 Multimode 24 Fiber (2 MTP) to Quad LC

Part Numbers	Description	Fiber #	Polarity	Form Factor
L1-0101B2EAx0xxxx	Infinium Core LC to LC Duplex DFX Fiber OM4 Aqua Patch	2	A-B	Duplex
LM2-LC24H	Infinium Core M2 Cassette, 24 Fiber, LC Quad to 2 MTP(M), OM4, Universal Polarity	24	Universal	M2
C4747BxxxxExxxxxxx	Infinium Core OM4 Non-Pinned MTP Trunk		B:1-1	Trunk



## M4 PLATFORMS

### Infinium HD Fiber Enclosure - M4

Part Numbers	Description	Rack Units	Max LC Port Count	Max Cassette Count
INFC01U-M4	1U Infinium High Density (HD) Fiber Enclosure M4 Drawer Face	1	96	4
INFC02U-M4	2U Infinium High Density (HD) Fiber Enclosure M4 Drawer Face	2	192	8
INFC04U-M4	4U Infinium High Density (HD) Fiber Enclosure M4 Drawer Face	4	384	16

### Rack Mount Panel – M4 Cassettes

Part Numbers	Description	Rack Units	Max LC Port Count	Max Cassette Count
RFPHD01U	1U High Density Raised Floor Panel Kit for Raised Floor Box	1	96	4
RFPHD02U	2U High Density Raised Floor Panel Kit for Raised Floor Box	2	192	8

## HDCA PLATFORMS

### HDJ Mixed Media Panel

<i>Flat</i>		<i>Angled</i>		Description
Black	White	Black	White	
PHDHJU24	PHDHJU24-W	PHAHJU24	PHAHJU24-W	1U 24-Port HDJ Series Modular Panel
PHDHJU48	PHDHJU48-W	PHAHJU48	PHAHJU48-W	1U 48-Port HDJ Series Modular Panel
PHDHJU72	PHDHJU72-W	PHAHJU72	PHAHJU72-W	2U 72-Port HDJ Series Modular Panel

### Infinium Modular Panel

<i>Flat</i>		<i>Angled</i>	Description
Part Numbers	Part Numbers	Part Numbers	
PHDFMU48	PHAFMU48		1U 48-Port HDJ Series Modular Panel w/label kit

## M2 PLATFORMS

### Q-Series Rack Mount Enclosure

Part Numbers	Description	Rack Units	Max LC Port Count	Max Cassette Count
EQ01U-CHC	ENCLOSURE, Q-SERIES, RACKMOUNT, 1U	1	72	3
EQ02U-CHC	ENCLOSURE, Q-SERIES, RACKMOUNT, 2U	2	144	6
EQ04U-CVC	ENCLOSURE, Q-SERIES, RACKMOUNT, 4U	4	288	12



designed to be better.™



**Data Communications**

60 Woodlawn Street  
West Hartford, CT 06110  
800.934.5432  
[www.legrand.us](http://www.legrand.us)

9024 Keele Street,  
Concord, Ontario L4K 2N2  
905.738.9195  
[www.legrand.ca](http://www.legrand.ca)

Follow Us

