



CONNECT AND PROTECT

nVent CADDY Direct Fastening

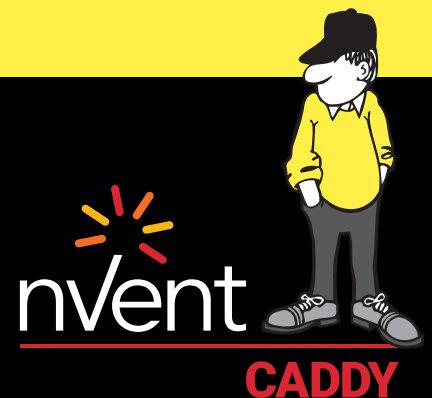


Table of Contents

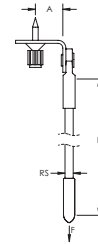
Drop Smooth Rod with Shot-Fire Bracket.....	3
Drop Threaded Rod with Shot-Fire Bracket.....	3
nVent CADDY Cat HP J-Hook with Shot-Fire Drop Bar.....	4
Cat HP J-Hook with Shot-Fire Bracket.....	5
Cat HP J-Hook Bracket with Shot-Fire Bracket.....	5
nVent CADDY Cablecat J-Hook with Shot-Fire Bracket.....	6
Thread Install Rod Hanger with Shot-Fire Bracket.....	6
Push Install Rod/Wire Hanger with Shot-Fire Bracket.....	7
Push Install Rod Hanger with Shot-Fire Bracket.....	7
Snap Close Conduit/Pipe Clamp with Shot-Fire Bracket.....	8
Snap Close Conduit Clamp with Z Shot-Fire Bracket.....	9
Push In Conduit Clamp with Shot-Fire Bracket.....	9
Push In Conduit Clamp with Z Shot-Fire Bracket.....	10
Bolt Close Conduit/Pipe Clamp with Shot-Fire Bracket.....	10
Bolt Close Conduit/Pipe Clamp with Z Shot-Fire Bracket.....	11
MC/AC Cable Clip with Shot-Fire Bracket.....	11
MC/AC Cable Support with Shot-Fire Bracket.....	12
NM Cable Clip with Shot-Fire Bracket.....	12
nVent CADDY Speed Link SLK with Shot-Fire Bracket.....	13
WMX Cable Hanger with Shot-Fire Bracket.....	13
Strap Hanger with Shot-Fire Bracket.....	14
Angle Bracket with Shot-Fire Bracket.....	14
Cat HP J-Hook with Nail Gun Bracket.....	15
Thread Install Rod Hanger with Nail Gun Bracket.....	15
Push Install Rod/Wire Hanger with Nail Gun Bracket.....	16
MC/AC Cable Support with Nail Gun Bracket.....	16
Speed Link SLK with Nail Gun Bracket.....	17
Angle Bracket with Nail Gun Bracket.....	18
Nail Gun Insert.....	18
Metal Pressure Clip.....	19



Drop Smooth Rod with Shot-Fire Bracket

FEATURES

- Quickly and easily attaches to concrete, steel or composite metal decking
- Integrated pin installs easily using powder-actuated or single-shot gas-actuated tools
- Works with most standard nVent CADDY spring steel fasteners designed for rod attachments
- Rod is rigid and does not require secondary attachment to ceiling grid per NEC 300.11
- Stocked inventory - available when you need it
- Includes pre-assembled end-cap
- Specialized packaging simplifies material handling and minimizes sorting
- Rods are ready to install out of the box



Material: Steel

Finish: Electrogalvanized



Part Number	Rod Size	Length	A	Static Load
DR4SF12	0.205"	12"	3/4"	95 lb
DR4SF24	0.205"	24"	3/4"	95 lb
DR4SF36	0.205"	36"	3/4"	95 lb
DR4SF40	0.205"	40"	3/4"	95 lb
DR4SF48	0.205"	48"	3/4"	95 lb

Uses Powers Fasteners, Inc. part number 50378. Static load was established based on a 1-1/8" (28.6 mm) embedment depth and 3,000 psi (20.68 Mpa) normal-weight concrete. For variations in embedment and material please consult www.powers.com. Pre-assembled drive pin from Powers Fasteners, Inc. recommended for use with Powers Sniper Powder Actuated Tool. For shot-fired supports in seismic design category D, E, or F, maximum load is the lesser of 90 lb (400 N) or the published load. Exempt from seismic design when supporting conduits less than 2-1/2" (64mm) trade size, regardless of lp.

Drop Threaded Rod with Shot-Fire Bracket

FEATURES

- Quickly and easily attaches to concrete, steel or composite metal decking
- Integrated pin installs easily using powder-actuated or single-shot gas-actuated tools
- Works with most standard nVent CADDY spring steel fasteners designed for rod attachments
- Rod is rigid and does not require secondary attachment to ceiling grid per NEC 300.11
- Stocked inventory - available when you need it
- Includes pre-assembled end-cap
- Specialized packaging simplifies material handling and minimizes sorting
- Rods are ready to install out of the box



Material: Steel

Finish: Electrogalvanized



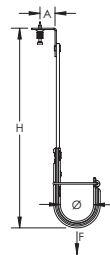
Part Number	Rod Size	Length	A	Static Load
DR4TSF12	1/4"	12"	3/4"	95 lb
DR4TSF24	1/4"	24"	3/4"	95 lb
DR4TSF36	1/4"	36"	3/4"	95 lb
DR4TSF40	1/4"	40"	3/4"	95 lb
DR4TSF48	1/4"	48"	3/4"	95 lb

Uses Powers Fasteners, Inc. part number 50378. Static load was established based on a 1-1/8" (28.6 mm) embedment depth and 3,000 psi (20.68 Mpa) normal-weight concrete. For variations in embedment and material please consult www.powers.com. Pre-assembled drive pin from Powers Fasteners, Inc. recommended for use with Powers Sniper Powder Actuated Tool. For shot-fired supports in seismic design category D, E, or F, maximum load is the lesser of 90 lb (400 N) or the published load. Exempt from seismic design when supporting conduits less than 2-1/2" (64mm) trade size, regardless of lp.

nVent CADDY Cat HP J-Hook with Shot-Fire Drop Bar

FEATURES

- Complete with shot-fire bracket and pre-assembled drive pin from Powers Fasteners, Inc.
- Quickly and easily attaches to concrete, steel or composite metal decking
- Integrated pin installs easily using powder-actuated or single-shot gas-actuated tools
- Specialized packaging simplifies material handling and minimizes sorting
- Provides optimal support for high-performance data cable, up to and including Cat 5e, Cat 6, Cat 6A, Cat 7 and fibre optic
- Rounded edges on J-Hooks provide proper bend radius support for high performance data cables
- Provides superior fill capacity and load rating over most other non-continuous cable support alternatives
- Complies with EN 50174-2
- Meets ISO®/IEC 14763-2, ANSI®/TIA 568 and ANSI®/TIA 569
- ICC-ES ESR-2024 evaluation report available for drive pin from Powers Fasteners, Inc



Material: Steel

Finish: Electrogalvanized, Pregalvanized



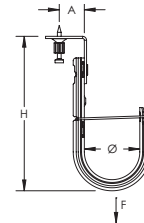
Part Number	Diameter	Area	Cable Capacity, Cat 5e	Cable Capacity, Cat 6	Cable Capacity, Cat 6A	Length	A	B	C
DB12SFCAT32HP	2"	3.97 in ²	90	60	35	12"	1.48"	0.3"	1 1/4"
DB15SFCAT64HP	4"	15.48 in ²	330	220	140	15"	1.48"	0.3"	1 1/4"
DB18SFCAT32HP	2"	3.97 in ²	90	60	35	18"	1.48"	0.3"	1 1/4"
DB21SFCAT64HP	4"	15.48 in ²	330	220	140	21"	1.48"	0.3"	1 1/4"
DB24SFCAT32HP	2"	3.97 in ²	90	60	35	24"	1.48"	0.3"	1 1/4"
DB27SFCAT64HP	4"	15.48 in ²	330	220	140	27"	1.48"	0.3"	1 1/4"
DB30SFCAT32HP	2"	3.97 in ²	90	60	35	30"	1.48"	0.3"	1 1/4"
DB33SFCAT64HP	4"	15.48 in ²	330	220	140	33"	1.48"	0.3"	1 1/4"
DB36SFCAT32HP	2"	3.97 in ²	90	60	35	36"	1.48"	0.3"	1 1/4"
DB39SFCAT64HP	4"	15.48 in ²	330	220	140	39"	1.48"	0.3"	1 1/4"
DB48SFCAT32HP	2"	3.97 in ²	90	60	35	48"	1.48"	0.3"	1 1/4"
DB51SFCAT64HP	4"	15.48 in ²	330	220	140	51"	1.48"	0.3"	1 1/4"

Uses Powers Fasteners, Inc. part number 50032. Static load was established based on a 1" (25.4 mm) embedment depth and 3,000 psi (20.68 Mpa) lightweight concrete. For variations in embedment and material please consult www.powers.com. Pre-assembled drive pin from Powers Fasteners, Inc. recommended for use with Powers Sniper Powder Actuated Tool.

Cat HP J-Hook with Shot-Fire Bracket

FEATURES

- Provides optimal support for high-performance data cable, up to and including Cat 5e, Cat 6, Cat 6A, Cat 7 and fibre optic
- Complete with shot-fire bracket and pre-assembled drive pin from Powers Fasteners, Inc.
- Quickly and easily attaches to concrete, steel or composite metal decking
- Integrated pin installs easily using powder-actuated or single-shot gas-actuated tools
- Rounded edges on J-Hooks provide proper bend radius support for high performance data cables
- Provides superior fill capacity and load rating over most other non-continuous cable support alternatives
- Complies with EN 50174-2
- Meets ISO®/IEC 14763-2, ANSI®/TIA 568 and ANSI®/TIA 569
- ICC-ES ESR-2024 evaluation report available for drive pin from Powers Fasteners, Inc



Material: Steel

Finish: Electrogalvanized, Pregalvanized

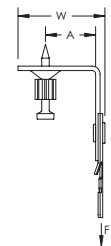
Part Number	Diameter	Area	Cable Capacity, Cat 5e	Cable Capacity, Cat 6	Cable Capacity, Cat 6A	Height	A	Static Load
CAT16HPSF	1"	1.07 in ²	20	15	10	4 3/4"	7/8"	60 lb
CAT21HPSF	1 5/16"	2.29 in ²	50	40	25	5 1/8"	7/8"	60 lb
CAT32HPSF	2"	3.97 in ²	90	60	35	5 1/2"	7/8"	60 lb
CAT48HPSF	3"	9.26 in ²	200	150	80	7 1/4"	7/8"	60 lb
CAT64HPSF	4"	15.48 in ²	330	220	140	8"	7/8"	60 lb

Uses Powers Fasteners, Inc. part number 50032. Static load was established based on a 1" (25.4 mm) embedment depth and 3,000 psi (20.68 Mpa) lightweight concrete. For variations in embedment and material please consult www.powers.com. Pre-assembled drive pin from Powers Fasteners, Inc. recommended for use with Powers Sniper Powder Actuated Tool.

Cat HP J-Hook Bracket with Shot-Fire Bracket

FEATURES

- Link to J-Hooks in one of multiple color options to aid in pathway identification and organization
- Complete with shot-fire bracket and pre-assembled drive pin from Powers Fasteners, Inc.
- Quickly and easily attaches to concrete, steel or composite metal decking
- Integrated pin installs easily using powder-actuated or single-shot gas-actuated tools
- J-Hooks feature bendable locking tabs that lock on to Cat HP components to provide rigidity and stability
- Customized J-Hook trees can be easily assembled with various J-Hook sizes, colors and configurations
- Cat HP components easily attach to any size Cat HP J-Hook
- ICC-ES ESR-2024 evaluation report available for drive pin from Powers Fasteners, Inc



Material: Steel, Spring Steel

Finish: Electrogalvanized, nVent CADDY Armour

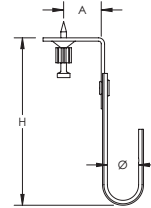
Part Number	Width	A	Static Load
CATHPABSF	1 9/16"	7/8"	100 lb

For shot-fired supports in seismic design category D, E, or F, maximum load is the lesser of 90 lb (400 N) or the published load.

nVent CADDY Cablecat J-Hook with Shot-Fire Bracket

FEATURES

- Cost effective alternative to expensive cable tray
- Galvanized finish on J-Hooks provide smoother cable pull and greater corrosion resistance
- Complete with shot-fire bracket and pre-assembled drive pin from Powers Fasteners, Inc.
- Quickly and easily attaches to concrete, steel or composite metal decking
- Integrated pin installs easily using powder-actuated or single-shot gas-actuated tools
- ICC-ES ESR-2024 evaluation report available for drive pin from Powers Fasteners, Inc



Material: Steel

Finish: Electrogalvanized, Pregalvanized

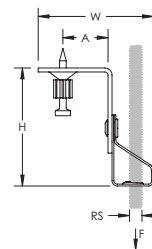
Part Number	Diameter	Height	A
CAT12SF	3/4"	4 1/16"	7/8"

Uses Powers Fasteners, Inc. part number 50032. Pre-assembled drive pin from Powers Fasteners, Inc. recommended for use with Powers Sniper Powder Actuated Tool.

Thread Install Rod Hanger with Shot-Fire Bracket

FEATURES

- Suspends threaded rod without the need for additional hardware
- Complete with shot-fire bracket and pre-assembled drive pin from Powers Fasteners, Inc.
- Quickly and easily attaches to concrete, steel or composite metal decking
- Integrated pin installs easily using powder-actuated or single-shot gas-actuated tools
- ICC-ES ESR-2024 evaluation report available for drive pin from Powers Fasteners, Inc



Material: Steel, Spring Steel

Finish: Electrogalvanized, Armour

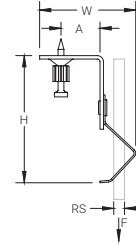
Part Number	Rod Size	Height	Width	A	Static Load
4TIBSF	1/4"	2.35"	2.31"	0.9"	100 lb
6TIBSF	3/8"	2.35"	2.31"	0.9"	100 lb

Uses Powers Fasteners, Inc. part number 50032. Static load was established based on a 1" (25.4 mm) embedment depth and 3,000 psi (20.68 Mpa) lightweight concrete. For variations in embedment and material please consult www.powers.com. For shot-fired supports in seismic design category D, E, or F, maximum load is the lesser of 90 lb (400 N) or the published load.

Push Install Rod/Wire Hanger with Shot-Fire Bracket

FEATURES

- Permits pre-assembly of wire or plain rod
- Suspends wire or plain rod from horizontal structures
- Complete with shot-fire bracket and pre-assembled drive pin from Powers Fasteners, Inc.
- Quickly and easily attaches to concrete, steel or composite metal decking
- Integrated pin installs easily using powder-actuated or single-shot gas-actuated tools
- ICC-ES ESR-2024 evaluation report available for drive pin from Powers Fasteners, Inc



Material: Steel, Spring Steel
 Finish: Electrogalvanized, Armour

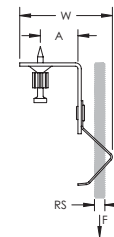
Part Number	Rod Size	Wire Size	Height	Width	A	Static Load
708SF	1/4"	#8	3 1/16"	2 1/4"	7/8"	100 lb

Uses Powers Fasteners, Inc. part number 50032. Static load was established based on a 1" (25.4 mm) embedment depth and 3,000 psi (20.68 Mpa) lightweight concrete. For variations in embedment and material please consult www.powers.com. Pre-assembled drive pin from Powers Fasteners, Inc. recommended for use with Powers Sniper Powder Actuated Tool. For shot-fired supports in seismic design category D, E, or F, maximum load is the lesser of 90 lb (400 N) or the published load.

Push Install Rod Hanger with Shot-Fire Bracket

FEATURES

- Suspends threaded rod without the need for additional hardware
- Complete with shot-fire bracket and pre-assembled drive pin from Powers Fasteners, Inc.
- Quickly and easily attaches to concrete, steel or composite metal decking
- Integrated pin installs easily using powder-actuated or single-shot gas-actuated tools
- ICC-ES ESR-2024 evaluation report available for drive pin from Powers Fasteners, Inc



Material: Steel, Spring Steel
 Finish: Electrogalvanized, Armour

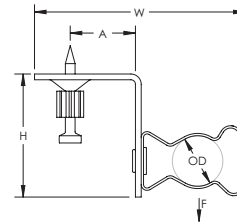
Part Number	Rod Size	Width	A	Static Load
6ASF	#8	2 1/4"	7/8"	100 lb

Uses Powers Fasteners, Inc. part number 50032. Static load was established based on a 1" (25.4 mm) embedment depth and 3,000 psi (20.68 Mpa) lightweight concrete. For variations in embedment and material please consult www.powers.com. Pre-assembled drive pin from Powers Fasteners, Inc. recommended for use with Powers Sniper Powder Actuated Tool. For shot-fired supports in seismic design category D, E, or F, maximum load is the lesser of 90 lb (400 N) or the published load.

Snap Close Conduit/Pipe Clamp with Shot-Fire Bracket

FEATURES

- Eliminates need for offset bending conduit
- Finger closure, no tools required
- Complete with shot-fire bracket and pre-assembled drive pin from Powers Fasteners, Inc.
- Quickly and easily attaches to concrete, steel or composite metal decking
- Integrated pin installs easily using powder-actuated or single-shot gas-actuated tools
- ICC-ES ESR-2024 evaluation report available for drive pin from Powers Fasteners, Inc



Material: Steel, Spring Steel
 Finish: Electrogalvanized, Armour

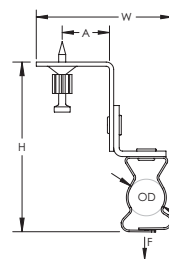
Part Number	Flexible Conduit Size	MC/AC Cable Size	EMT Conduit Size	Rigid Conduit/Pipe Size	Outer Diameter	Height	Width	A	Static Load
16MSF			1"	1"	1.181" – 1.378"	1 3/4"	4"	7/8"	25 lb
6MSF	3/8"	14-2 to 12-3			0.551" – 0.709"	1 11/16"	3 1/8"	7/8"	25 lb
812MSF			1/2", 3/4"	1/2", 3/4"	0.709" – 1.181"	2"	3 3/8"	7/8"	25 lb

Uses Powers Fasteners, Inc. part number 50032. Static load was established based on a 1" (25.4 mm) embedment depth and 3,000 psi (20.68 Mpa) lightweight concrete. For variations in embedment and material please consult www.powers.com. Pre-assembled drive pin from Powers Fasteners, Inc. recommended for use with Powers Sniper Powder Actuated Tool.

Snap Close Conduit Clamp with Z Shot-Fire Bracket

FEATURES

- Eliminates need for offset bending conduit
- Finger closure, no tools required
- Complete with shot-fire bracket and pre-assembled drive pin from Powers Fasteners, Inc.
- Quickly and easily attaches to concrete, steel or composite metal decking
- Integrated pin installs easily using powder-actuated or single-shot gas-actuated tools
- ICC-ES ESR-2024 evaluation report available for drive pin from Powers Fasteners, Inc



Material: Steel, Spring Steel
Finish: Electrogalvanized, Armour

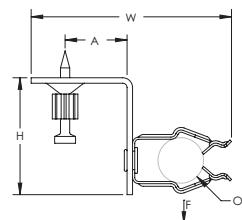
Part Number	Flexible Conduit Size	MC/AC Cable Size	EMT Conduit Size	Rigid Conduit/Pipe Size	Outer Diameter	Height	Width	A	Static Load
16MZSF			1"	1"	1.181" – 1.378"	4 3/8"	2 3/4"	7/8"	100 lb
6MZSF	3/8"	14-2 to 12-3			0.551" – 0.709"	3 1/2"	2 1/2"	7/8"	100 lb
812MZSF			1/2", 3/4"	1/2", 3/4"	0.709" – 1.181"	3 7/8"	2 3/4"	7/8"	100 lb

Uses Powers Fasteners, Inc. part number 50032. Static load was established based on a 1" (25.4 mm) embedment depth and 3,000 psi (20.68 Mpa) lightweight concrete. For variations in embedment and material please consult www.powers.com. Pre-assembled drive pin from Powers Fasteners, Inc. recommended for use with Powers Sniper Powder Actuated Tool. For shot-fired supports in seismic design category D, E, or F, maximum load is the lesser of 90 lb (400 N) or the published load.

Push In Conduit Clamp with Shot-Fire Bracket

FEATURES

- Push-in installation of conduit
- Eliminates need for offset bending conduit
- Complete with shot-fire bracket and pre-assembled drive pin from Powers Fasteners, Inc.
- Quickly and easily attaches to concrete, steel or composite metal decking
- Integrated pin installs easily using powder-actuated or single-shot gas-actuated tools
- ICC-ES ESR-2024 evaluation report available for drive pin from Powers Fasteners, Inc



Material: Steel, Spring Steel
Finish: Electrogalvanized, Armour

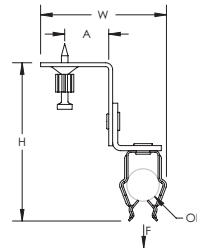
Part Number	EMT Conduit Size	Outer Diameter	Height	Width	A	Ultimate Static Load
12PSF	3/4"	0.866" – 1.181"	1 11/16"	3 1/16"	7/8"	15 lb
16PSF	1"	1.181" – 1.378"	1 7/8"	3 3/8"	7/8"	15 lb
8PSF	1/2"	0.709" – 0.866"	1 11/16"	2 15/16"	7/8"	15 lb

Uses Powers Fasteners, Inc. part number 50032. Static load was established based on a 1" (25.4 mm) embedment depth and 3,000 psi (20.68 Mpa) lightweight concrete. For variations in embedment and material please consult www.powers.com. Pre-assembled drive pin from Powers Fasteners, Inc. recommended for use with Powers Sniper Powder Actuated Tool.

Push In Conduit Clamp with Z Shot-Fire Bracket

FEATURES

- Push-in installation of conduit
- Eliminates need for offset bending conduit
- Complete with shot-fire bracket and pre-assembled drive pin from Powers Fasteners, Inc.
- Quickly and easily attaches to concrete, steel or composite metal decking
- Integrated pin installs easily using powder-actuated or single-shot gas-actuated tools
- ICC-ES ESR-2024 evaluation report available for drive pin from Powers Fasteners, Inc



Material: Steel, Spring Steel
Finish: Electrogalvanized, Armour

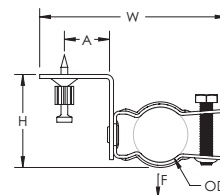
Part Number	EMT Conduit Size	Outer Diameter	Height	Width	A	Ultimate Static Load
12PZSF	3/4"	0.866" – 1.181"	3 5/8"	2 5/8"	7/8"	25 lb
16PZSF	1"	1.181" – 1.378"	3 7/8"	2 3/4"	7/8"	25 lb
8PZSF	1/2"	0.709" – 0.866"	3 3/8"	2 5/8"	7/8"	25 lb

Uses Powers Fasteners, Inc. part number 50032. Static load was established based on a 1" (25.4 mm) embedment depth and 3,000 psi (20.68 Mpa) lightweight concrete. For variations in embedment and material please consult www.powers.com. Pre-assembled drive pin from Powers Fasteners, Inc. recommended for use with Powers Sniper Powder Actuated Tool.

Bolt Close Conduit/Pipe Clamp with Shot-Fire Bracket

FEATURES

- Retained bolt and built-in nut means there are less parts to handle or drop
- Combo head bolt works with slotted, hex, #3 phillips or #2 robertson drivers
- Complete with shot-fire bracket and pre-assembled drive pin from Powers Fasteners, Inc.
- Quickly and easily attaches to concrete, steel or composite metal decking
- Integrated pin installs easily using powder-actuated or single-shot gas-actuated tools
- ICC-ES ESR-2024 evaluation report available for drive pin from Powers Fasteners, Inc



Material: Steel
Finish: Electrogalvanized

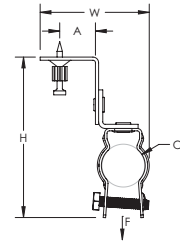
Part Number	Outer Diameter	EMT Conduit Size	Rigid Conduit/Pipe Size	Height	Width	A	Static Load
CD0BSF	0.670" – 0.840"	1/2"	1/2"	1 3/4"	3 3/8"	7/8"	100 lb
CD1BSF	0.740" – 1.050"	3/4"	3/4"	1 7/8"	3 3/4"	7/8"	100 lb
CD2BSF	1.000" – 1.315"	1"	1"	2"	3 7/8"	7/8"	100 lb

Uses Powers Fasteners, Inc. part number 50032. Static load was established based on a 1" (25.4 mm) embedment depth and 3,000 psi (20.68 Mpa) lightweight concrete. For variations in embedment and material please consult www.powers.com. Pre-assembled drive pin from Powers Fasteners, Inc. recommended for use with Powers Sniper Powder Actuated Tool.

Bolt Close Conduit/Pipe Clamp with Z Shot-Fire Bracket

FEATURES

- Retained bolt and built-in nut means there are less parts to handle or drop
- Combo head bolt works with slotted, hex, #3 phillips or #2 robertson drivers
- Complete with shot-fire bracket and pre-assembled drive pin from Powers Fasteners, Inc.
- Quickly and easily attaches to concrete, steel or composite metal decking
- Integrated pin installs easily using powder-actuated or single-shot gas-actuated tools
- ICC-ES ESR-2024 evaluation report available for drive pin from Powers Fasteners, Inc



Material: Steel
Finish: ElectroGalvanized

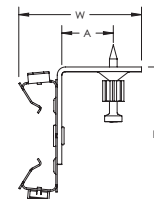
Part Number	Outer Diameter	EMT Conduit Size	Rigid Conduit/Pipe Size	Height	Width	A	Static Load
CD0BZSF	0.670" – 0.840"	1/2"	1/2"	3 7/8"	2 3/4"	7/8"	100 lb
CD1BZSF	0.740" – 1.050"	3/4"	3/4"	4 1/8"	3 1/8"	7/8"	100 lb
CD2BZSF	1.000" – 1.315"	1"	1"	4 3/8"	3 1/8"	7/8"	100 lb

Uses Powers Fasteners, Inc. part number 50032. Static load was established based on a 1" (25.4 mm) embedment depth and 3,000 psi (20.68 Mpa) lightweight concrete. For variations in embedment and material please consult www.powers.com. Pre-assembled drive pin from Powers Fasteners, Inc. recommended for use with Powers Sniper Powder Actuated Tool. For shot-fired supports in seismic design category D, E, or F, maximum load is the lesser of 90 lb (400 N) or the published load.

MC/AC Cable Clip with Shot-Fire Bracket

FEATURES

- Provides easy snap-in installation of up to two MC/AC cables
- Complete with shot-fire bracket and pre-assembled drive pin from Powers Fasteners, Inc.
- Quickly and easily attaches to concrete, steel or composite metal decking
- Integrated pin installs easily using powder-actuated or single-shot gas-actuated tools
- ICC-ES ESR-2024 evaluation report available for drive pin from Powers Fasteners, Inc



Material: Steel, Spring Steel
Finish: ElectroGalvanized, Armour

Part Number	MC/AC Cable Size	Height	Width	A
MAC2SF	14-2 to 10-3	2 3/8"	2 3/16"	7/8"

Uses Powers Fasteners, Inc. part number 50032. Pre-assembled drive pin from Powers Fasteners, Inc. recommended for use with Powers Sniper Powder Actuated Tool.

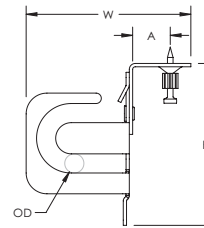
MC/AC Cable Support with Shot-Fire Bracket

FEATURES

- Neatly isolates, supports and secures MC/AC cables
- Properly spaces MC/AC cable to help eliminate bundling and NEC® & CEC derating issues
- Results in a “neat and workmanlike” installation
- Complete with shot-fire bracket and pre-assembled drive pin from Powers Fasteners, Inc.
- Quickly and easily attaches to concrete, steel or composite metal decking
- Integrated pin installs easily using powder-actuated or single-shot gas-actuated tools
- ICC-ES ESR-2024 evaluation report available for drive pin from Powers Fasteners, Inc

Material: Steel

Finish: Electrogalvanized



Part Number	MC/AC Cable Size	Super Neutral Cable Size	Outer Diameter	Cable Capacity	Height	Width	A
MCS100SF	14-3 to 10-2	10-2	0.43" – 0.56"	8	3 7/8"	2 7/8"	7/8"

Uses Powers Fasteners, Inc. part number 50032. Pre-assembled drive pin from Powers Fasteners, Inc. recommended for use with Powers Sniper Powder Actuated Tool.

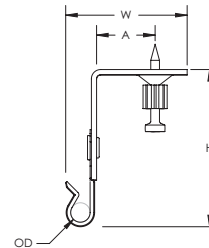
NM Cable Clip with Shot-Fire Bracket

FEATURES

- Supports non-metallic sheathed cable with ground wire
- Complete with shot-fire bracket and pre-assembled drive pin from Powers Fasteners, Inc.
- Quickly and easily attaches to concrete, steel or composite metal decking
- Integrated pin installs easily using powder-actuated or single-shot gas-actuated tools
- ICC-ES ESR-2024 evaluation report available for drive pin from Powers Fasteners, Inc

Material: Steel, Spring Steel

Finish: Electrogalvanized, Armour



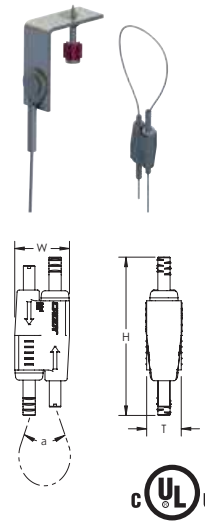
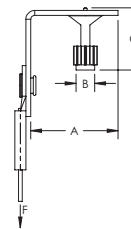
Part Number	NM Cable Size	Outer Diameter	Height	Width	A
RMXSF	14-2, 12-2	0.28" – 0.32"	2 1/2"	2"	7/8"

Uses Powers Fasteners, Inc. part number 50032. Pre-assembled drive pin from Powers Fasteners, Inc. recommended for use with Powers Sniper Powder Actuated Tool.

nVent CADDY Speed Link SLK with Shot-Fire Bracket

FEATURES

- Complete system includes wire, locking device and shot-fire bracket with pre-assembled drive pin from Powers Fasteners, Inc.
- Quickly and easily attaches to concrete, steel or composite metal decking
- Integrated pin installs easily using powder-actuated or single-shot gas-actuated tools
- ICC-ES ESR-2024 evaluation report available for drive pin from Powers Fasteners, Inc



Material: Steel, Zinc Alloy, Polypropylene
 Finish: Electrogalvanized
 Static Load Safety Factor: 5:1

Part Number	Wire Rope Length	A	B	C	Static Load
Wire Rope Diameter: 1.5 mm					
SLK15L1SF	3.3'	1.48"	0.3"	1 1/4"	44 lb
SLK15L2SF	6.6'	1.48"	0.3"	1 1/4"	44 lb
SLK15L3SF	9.9'	1.48"	0.3"	1 1/4"	44 lb
SLK15L5SF	16.4'	1.48"	0.3"	1 1/4"	44 lb
Wire Rope Diameter: 2.0 mm					
SLK2L2SF	6.6'	1.48"	0.3"	1 1/4"	100 lb
SLK2L3SF	9.9'	1.48"	0.3"	1 1/4"	100 lb
SLK2L5SF	16.4'	1.48"	0.3"	1 1/4"	100 lb

Uses Powers Fasteners, Inc. part number 50032. Static load was established based on a 1" (25.4 mm) embedment depth and 3,000 psi (20.68 Mpa) lightweight concrete. For variations in embedment and material please consult www.powers.com. Pre-assembled drive pin from Powers Fasteners, Inc. recommended for use with Powers Sniper Powder Actuated Tool. For shot-fired supports in seismic design category D, E, or F, maximum load is the lesser of 90 lb (400 N) or the published load.

WMX Cable Hanger with Shot-Fire Bracket

FEATURES

- Bundle runs of MC or AC (refer to local authorities and NEC® Article 310 for derating ampacity when flexible power cables are used)
- Complete with shot-fire bracket and pre-assembled drive pin from Illinois Tool Works, Inc.
- Quickly and easily attaches to concrete, steel or composite metal decking
- Integrated pin installs easily using powder-actuated or single-shot gas-actuated tools
- ICC-ES evaluation report available for drive pin from Illinois Tool Works, Inc.



Material: Steel
 Finish: Electrogalvanized

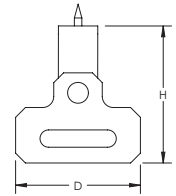
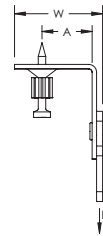
Part Number	Diameter	Thickness	Ultimate Static Load
WMX6SF	1 3/4"	1/8"	75 lb

Uses Ramset® part number SDC100. For minimum fastener embedment depths in steel or concrete, please consult www.ramset.com.

Strap Hanger with Shot-Fire Bracket

FEATURES

- Supports pipe or duct with banding or strapping
- Complete with shot-fire bracket and pre-assembled drive pin from Powers Fasteners, Inc.
- Quickly and easily attaches to concrete, steel or composite metal decking
- Integrated pin installs easily using powder-actuated or single-shot gas-actuated tools
- ICC-ES ESR-2024 evaluation report available for drive pin from Powers Fasteners, Inc



Material: Steel, Spring Steel
Finish: Armour, Pregalvanized

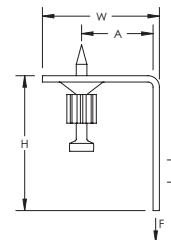
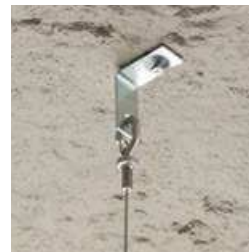
Part Number	Strap Width	Depth	Height	Width	A	Static Load
MSSSF	1 1/4" Max	2 1/4"	2 1/2"	1 5/8"	7/8"	100 lb

Uses Powers Fasteners, Inc. part number 50032. Static load was established based on a 1" (25.4 mm) embedment depth and 3,000 psi (20.68 Mpa) lightweight concrete. For variations in embedment and material please consult www.powers.com. Pre-assembled drive pin from Powers Fasteners, Inc. recommended for use with Powers Sniper Powder Actuated Tool. For shot-fired supports in seismic design category D, E, or F, maximum load is the lesser of 90 lb (400 N) or the published load.

Angle Bracket with Shot-Fire Bracket

FEATURES

- Provides an attachment point for nVent CADDY Speed Link assemblies, wire, S-hooks, or chain
- Complete with shot-fire bracket and pre-assembled drive pin from Powers Fasteners, Inc.
- Quickly and easily attaches to concrete, steel or composite metal decking
- Integrated pin installs easily using powder-actuated or single-shot gas-actuated tools
- ICC-ES ESR-2024 evaluation report available for drive pin from Powers Fasteners, Inc



Material: Steel
Finish: Electrogalvanized

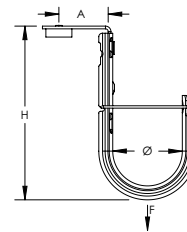
Part Number	Hole Size	Height	Width	A	Static Load
ABSF	1/4"	1 11/16"	1.48"	7/8"	100 lb

Uses Powers Fasteners, Inc. part number 50032. Static load was established based on a 1" (25.4 mm) embedment depth and 3,000 psi (20.68 Mpa) lightweight concrete. For variations in embedment and material please consult www.powers.com. Pre-assembled drive pin from Powers Fasteners, Inc. recommended for use with Powers Sniper Powder Actuated Tool. For shot-fired supports in seismic design category D, E, or F, maximum load is the lesser of 90 lb (400 N) or the published load.

Cat HP J-Hook with Nail Gun Bracket

FEATURES

- Provides optimal support for high-performance data cable, up to and including Cat 5e, Cat 6, Cat 6A, Cat 7 and fibre optic
- Complete with concrete nail gun insert bracket
- Clips onto nozzle of gas or battery-actuated nail guns allowing for hands-off installation at structure or from the floor using a pole
- Longer leg angle bracket for tool clearance
- Quickly and easily attaches to concrete, steel or composite metal decking
- Rounded edges on J-Hooks provide proper bend radius support for high performance data cables
- Provides superior fill capacity and load rating over most other non-continuous cable support alternatives
- Complies with EN 50174-2
- Meets ISO®/IEC 14763-2, ANSI®/TIA 568 and ANSI®/TIA 569



Material: Steel; Nylon

Finish: Electrogalvanized; Pregalvanized

Part Number	Diameter	Area	Cable Capacity, Cat 5e	Cable Capacity, Cat 6	Cable Capacity, Cat 6A	Height	A	Static Load
CAT16HPGBSF	1"	1.07 in ²	20	15	10	4.33"	1.4"	60 lb
CAT32HPGBSF	2"	3.97 in ²	90	60	35	5.00"	1.4"	60 lb

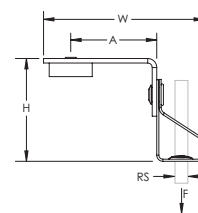
Static Load represents the static load of the nail gun insert assembly. Please consult with the nail manufacturer to evaluate the static load of the nail and type of concrete used for the installation. Maximum load is the lesser of the static load from the nail manufacturer or the published load for the assembly.

Nail gun insert is compatible with BeA® CN60-688ES, Hilti® BX 3, GX 3, Powers® Trak-It C3, SPIT® PULSA 800E, 700, 1000 or equivalent nailers.

Thread Install Rod Hanger with Nail Gun Bracket

FEATURES

- Suspends threaded rod without the need for additional hardware
- Complete with concrete nail gun insert bracket
- Clips onto nozzle of gas or battery-actuated nail guns allowing for hands-off installation at structure or from the floor using a pole
- Longer leg angle bracket for tool clearance
- Quickly and easily attaches to concrete, steel or composite metal decking



Material: Steel; Spring Steel; Nylon

Finish: nVent CADDY Armour; Electrogalvanized

Part Number	Rod Size	Height	Width	A	Static Load
4TIBGBSF	1/4"	2.35"	2.31"	1 1/2"	100 lb
6TIBGBSF	3/8"	2.35"	2.31"	1 1/2"	100 lb

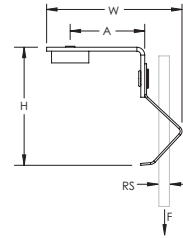
Static Load represents the static load of the nail gun insert assembly. Please consult with the nail manufacturer to evaluate the static load of the nail and type of concrete used for the installation. Maximum load is the lesser of the static load from the nail manufacturer or the published load for the assembly.

Nail gun insert is compatible with BeA® CN60-688ES, Hilti® BX 3, GX 3, Powers® Trak-It C3, SPIT® PULSA 800E, 700, 1000 or equivalent nailers.

Push Install Rod/Wire Hanger with Nail Gun Bracket

FEATURES

- Permits pre-assembly of wire or plain rod
- Suspends wire or plain rod from horizontal structures
- Complete with concrete nail gun insert bracket
- Clips onto nozzle of gas or battery-actuated nail guns allowing for hands-off installation at structure or from the floor using a pole
- Longer leg angle bracket for tool clearance
- Quickly and easily attaches to concrete, steel or composite metal decking



Material: Steel; Spring Steel

Finish: Electrogalvanized; nVent CADDY Armour

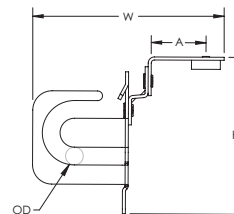
Part Number	Rod Size	Wire Size	Height	Width	A	Static Load
708GBSF	1/4"	#8	3 1/16"	2 1/4"	1 1/2"	100 lb

Static Load represents the static load of the nail gun insert assembly. Please consult with the nail manufacturer to evaluate the static load of the nail and type of concrete used for the installation. Maximum load is the lesser of the static load from the nail manufacturer or the published load for the assembly. Nail gun insert is compatible with BeA® CN60-688ES, Hilti® BX 3, GX 3, Powers® Trak-It C3, SPIT® PULSA 800E, 700, 1000 or equivalent nailers.

MC/AC Cable Support with Nail Gun Bracket

FEATURES

- Neatly isolates, supports and secures MC/AC cables
- Properly spaces MC/AC cable to help eliminate bundling and NEC® & CEC derating issues
- Results in a "neat and workmanlike" installation
- Complete with concrete nail gun insert bracket
- Clips onto nozzle of gas or battery-actuated nail guns allowing for hands-off installation at structure or from the floor using a pole
- Longer leg angle bracket for tool clearance
- Quickly and easily attaches to concrete, steel or composite metal decking



Material: Steel; Nylon

Finish: Electrogalvanized

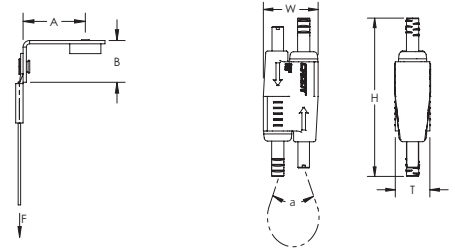
Part Number	MC/AC Cable Size	Super Neutral Cable Size	Outer Diameter	Cable Capacity	Height	Width	A
MCS100GBSF	14-3 to 10-2	10-2	0.43" - 0.56"	8	4"	5"	1.4"

Nail gun insert is compatible with BeA® CN60-688ES, Hilti® BX 3, GX 3, Powers® Trak-It C3, SPIT® PULSA 800E, 700, 1000 or equivalent nailers.

Speed Link SLK with Nail Gun Bracket

FEATURES

- Complete system includes wire, locking device and concrete nail gun insert bracket
- Clips onto nozzle of gas or battery-actuated nail guns allowing for hands-off installation at structure or from the floor using a pole
- Longer leg angle bracket for tool clearance
- Quickly and easily attaches to concrete, steel or composite metal decking



Material: Steel; Zinc Alloy; Polypropylene; Nylon
 Finish: Electrogalvanized
 Static Load Safety Factor: 5:1

Part Number	Wire Rope Length	A	B	Static Load
Wire Rope Diameter: 1.5 mm				
SLK15L2GBSF	6.6'	1 1/2"	1"	44 lb
SLK15L3GBSF	9.9'	1 1/2"	1"	44 lb
Wire Rope Diameter: 2.0 mm				
SLK2L2GBSF	6.6'	1 1/2"	1"	100 lb
SLK2L3GBSF	9.9'	1 1/2"	1"	100 lb

Height H	Width W	Thickness T	Angle a
2.15"	3/4"	1/2"	90° Max

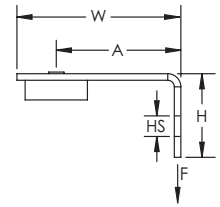
Static Load represents the static load of the nail gun insert assembly. Please consult with the nail manufacturer to evaluate the static load of the nail and type of concrete used for the installation. Maximum load is the lesser of the static load from the nail manufacturer or the published load for the assembly.

Nail gun insert is compatible with BeA® CN60-688ES, Hilti® BX 3, GX 3, Powers® Trak-It C3, SPIT® PULSA 800E, 700, 1000 or equivalent nailers.

Angle Bracket with Nail Gun Bracket

FEATURES

- Provides an attachment point for nVent CADDY Speed Link assemblies, wire, S-hooks, or chain
- Complete with concrete nail gun insert bracket
- Clips onto nozzle of gas or battery-actuated nail guns allowing for hands-off installation at structure or from the floor using a pole
- Longer leg angle bracket for tool clearance
- Quickly and easily attaches to concrete, steel or composite metal decking



Material: Steel; Nylon
Finish: Electrogalvanized

Part Number	Hole Size	Height	Width	A	Static Load
ABGBSF	0.28"	1"	2"	1 1/2"	100 lb

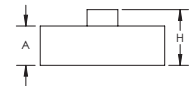
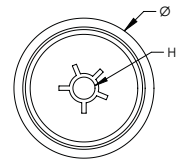
Static Load represents the static load of the nail gun insert assembly. Please consult with the nail manufacturer to evaluate the static load of the nail and type of concrete used for the installation. Maximum load is the lesser of the static load from the nail manufacturer or the published load for the assembly.

Nail gun insert is compatible with BeA® CN60-688ES, Hilti® BX 3, GX 3, Powers® Trak-It C3, SPIT® PULSA 800E, 700, 1000 or equivalent nailers.

Nail Gun Insert

FEATURES

- Clips onto nozzle of gas or battery-actuated nail guns allowing for hands-off installation at structure or from the floor using a pole
- Ideal for fastening junction boxes, electrical boxes and cable trunking
- Helps prevent damage when fastening to brittle materials
- Works with nVent CADDY Metal Pressure Clip
- Halogen free



Material: Nylon

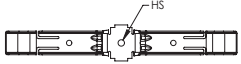
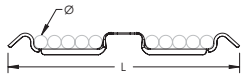
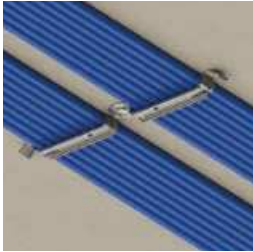
Part Number	Hole Size	Diameter	Height	A
IGBSF	0.12"	3/4"	0.33"	0.24"

Nail gun insert is compatible with BeA® CN60-688ES, Hilti® BX 3, GX 3, Powers® Trak-It C3, SPIT® PULSA 800E, 700, 1000 or equivalent nailers.

Metal Pressure Clip

FEATURES

- Ideal for smaller runs of cable
- Flexible clip retains shape and allows for cables to be inserted after installation
- Rounded edges help prevent cable damage
- Cables are neatly installed providing a consistent and professional appearance
- Low-profile allows for installations in tight spaces



Material: Spring Steel
 Finish: nVent CADDY Armour

Part Number	Cable Capacity	Diameter	Hole Size	Length
PKM10H3	10	0.39" Max	0.19"	6 3/4"
PKM16H3	16	0.39" Max	0.19"	9 1/4"

Supports cable diameters up to 1/2" (13 mm) when installed with a standard 1/4" (6 mm) washer.

Our powerful portfolio of brands:

CADDY ERICO HOFFMAN RAYCHEM SCHROFF TRACER



[nVent.com/CADDY](https://www.nVent.com/CADDY)

©2020 nVent. All nVent marks and logos are owned or licensed by nVent Services GmbH or its affiliates. BeA is a registered trademark of Joh. Friedrich Behrens AG. HILTI is a registered trademark of Hilti Aktiengesellschaft. NEC is a registered trademark of, and National Electrical Code (NEC) standard is a copyright of the National Fire Protection Association, Inc. Powers is a registered trademark of Stanley Black & Decker. SPIT is a registered trademark of Societe De Prospection & D'Inventions Techniques Spil. ANSI is a registered trademark of American National Standards Institute. ISO is a registered trademark of International Organization for Standardization. NEC is a registered trademark of, and National Electrical Code (NEC) standard is a copyright of the National Fire Protection Association, Inc. Ramset is a registered trademark of Illinois Tool Works, Inc. UL, UR, cUL, cUR, cULus and cURus are registered certification marks of UL LLC. All other trademarks are the property of their respective owners. nVent reserves the right to change specifications without notice. CADDY-SB-F1269B-DirectFastening-USEN-2002