

OptiFiber® Pro HDR

OTDR

Getting Started Guide

The OptiFiber Pro HDR (High Dynamic Range) Optical Time Domain Reflectometer (OTDR) module attaches to a Versiv™ or Versiv 2 main unit to make a rugged, hand-held tester that lets you locate, identify, and measure reflective and loss events on singlemode fibers in outside plant (OSP) and premises installations that may include splitters.






Accessing the Product Manuals











This guide provides basic information to help you get started using the tester. For more detailed information, see the latest versions of the Versiv Series Users Manual and the Versiv Series Technical Reference Handbook provided on the Fluke Networks website.

About LinkWare Live

With a Fluke Networks web account and a wired or wireless network connection, you can use the LinkWare™ Live web application to store and manage projects in the cloud. For more information, go to www.linkwarelive.com/signin or see the Users Manual or Technical Reference Handbook.

Symbols

	Warning or Caution: Risk of damage or destruction to equipment or software. See explanations in the manuals.
	Warning: Risk of fire, electric shock, or personal injury.
	Warning: Class 1 or Class 2 lasers. Risk of eye damage from hazardous radiation.
	Consult the user documentation.
	Do not connect this equipment to public communications networks, such as telephone systems.

	Conforms to the Appliance Efficiency Regulation (California Code of Regulations, Title 20, Sections 1601 through 1608), for small battery charging systems.
	This Product contains a lithium-ion battery. Do not mix with the solid waste stream. Spent batteries should be disposed of by a qualified recycler or hazardous materials handler per local regulations. Contact your authorized Fluke Service Center for recycling information.
	40 year Environment Friendly Use Period (EFUP) under China Regulation - Administrative Measure on the Control of Pollution Caused by Electronic Information Products. This is the period of time before any of the identified hazardous substances are likely to leak out, causing possible harm to health and the environment.
	This product complies with the WEEE Directive marking requirements. The affixed label indicates that you must not discard this electrical/electronic product in domestic household waste. Product Category: With reference to the equipment types in the WEEE Directive Annex I, this product is classed as category 9 "Monitoring and Control Instrumentation" product. Do not dispose of this product as unsorted municipal waste. To return unwanted products, contact the manufacturer's web site shown on the product or your local sales office or distributor.
	Conformite Europeene. Conforms to the requirements of the European Union and the European Free Trade Association (EFTA).
	Certified by CSA Group to North American safety standards.
	Conforms to relevant Australian standards.
	Conforms to relevant Russian standards.
	EMC approval for Korea. Class A Equipment (Industrial Broadcasting and Communication Equipment). This product meets requirements for industrial (Class A) electromagnetic wave equipment and the seller or user should take notice of it. This equipment is intended for use in business environments and is not to be used in homes.
	This key turns the Product on and off.

Safety Information

Warning

To prevent possible fire, electric shock, or personal injury:

- Read all safety information before you use the Product.
- Carefully read all instructions.
- Do not open the case. You cannot repair or replace parts in the case.
- Do not modify the Product.

- Use only replacement parts that are approved by Fluke Networks.
- Do not touch voltages > 30 V AC rms, 42 V AC peak, or 60 V DC.
- Do not use the Product around explosive gas, vapor, or in damp or wet environments.
- Charge the battery indoors.
- Use the Product only as specified, or the protection supplied by the Product can be compromised.
- Do not use and disable the Product if it is damaged.
- Do not use the Product if it operates incorrectly.
- Batteries contain hazardous chemicals that can cause burns or explode. If exposure to chemicals occurs, clean with water and get medical aid.
- Remove the batteries if the Product is not used for an extended period of time, or if stored in temperatures above 50 °C. If the batteries are not removed, battery leakage can damage the Product.
- Replace the rechargeable battery after 5 years of moderate use or 2 years of heavy use. Moderate use is defined as recharged twice a week. Heavy use is defined as discharged to cutoff and recharged daily.
- Disconnect the battery charger and move the Product or battery to a cool, non-flammable location if the rechargeable battery becomes hot (>50 °C, >122 °F) during the charge period.
- The battery door must be closed and locked before you operate the Product.
- Repair the Product before use if the battery leaks.
- Recharge the batteries when the low battery indicator shows to prevent incorrect measurements.
- Do not disassemble or crush battery cells and battery packs.
- Do not put battery cells and battery packs near heat or fire. Do not put in sunlight.
- Have an approved technician repair the Product.
- For Products with rechargeable batteries, use only AC adapters approved by Fluke Networks for use with the Product to supply power to the Product and charge the battery.

 **Warning: Class 1 and Class 2 Laser Products** 

To prevent eye damage and personal injury:


- Do not look directly into optical connectors. Some optical equipment emits invisible radiation that can cause permanent damage to your eyes.

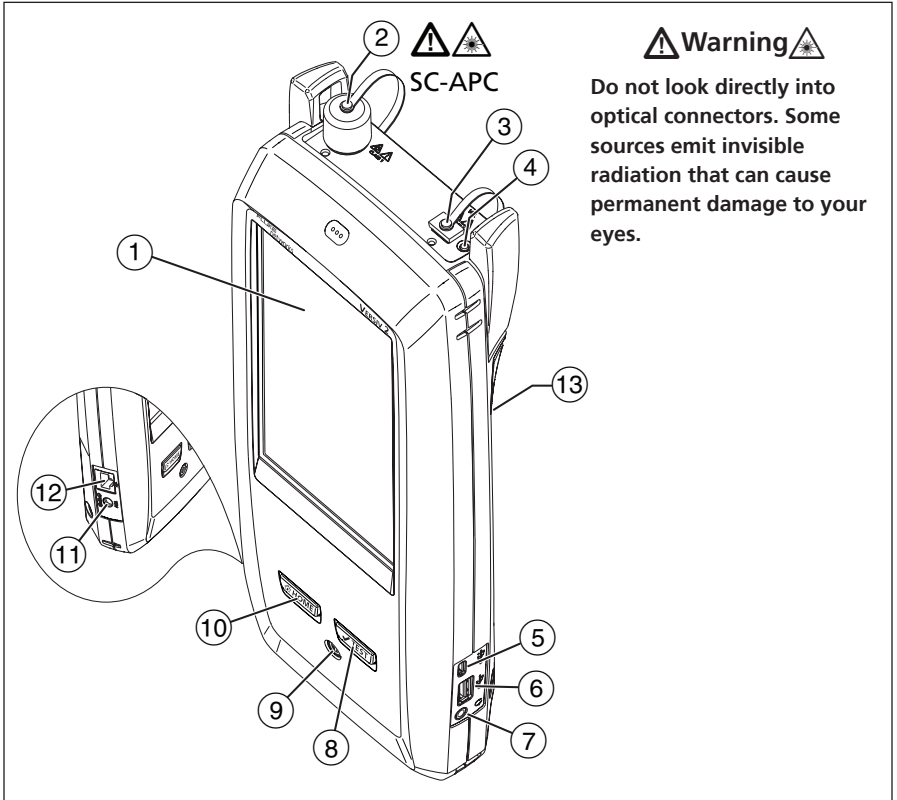
- Do not look into the laser. Do not point laser directly at persons or animals or indirectly off reflective surfaces.
- When you inspect fiber endfaces, use only magnification devices that have the correct filters.
- Use the Product only as specified or hazardous laser radiation exposure can occur.

Caution

To prevent damage to the Product or cables under test and to prevent data loss, read all safety information given in all documentation supplied with the Product.

Connectors, Keys, and LEDs

- ① LCD display with touchscreen.
- ② Singlemode OTDR port with an APC endface, interchangeable SC adapter, and protective cap. The LED in front of the port turns on when the port emits an optical signal.
- ③ Visual fault locator port and protective cap. The LED in front of the port turns on when the port emits an optical signal.
- ④ Button that controls the VFL.
- ⑤ Micro USB port: This USB port lets you connect the tester to a PC so you can upload test results to the PC and install software updates in the tester.
- ⑥ Type A USB port: This USB host port lets you save test results on a USB flash drive and connect the FI-1000 video probe to the tester. Versiv: Also lets you connect a Wi-Fi adapter for access to Fluke Networks cloud services. (Versiv 2 testers have an internal Wi-Fi radio.)
- ⑦ Headset jack.
- ⑧ : Starts a test. To start a test, you can also tap TEST on the display.
- ⑨ Power button. Versiv 2: The LED in the power button shows the status of the battery charging process. See the Users Manual.



GPU209.EPS

Figure 1. Connectors, Keys, and LEDs (Versiv 2 shown)

- ⑩ : Press to go to the home screen.
- ⑪ Connector for the AC adapter. Versiv: The LED is red when the battery charges, and green when the battery is fully charged. The LED is yellow if the battery will not charge.
- ⑫ RJ45 connector: Lets you connect to a network for access to Fluke Networks cloud services.

- ⑬ Decal with laser safety information:



$\lambda = 650\text{nm}$, 0.85mW IEC/EN 60825-1 Complies with 21 CFR 1040.10 and 1040.11 except for deviations pursuant to Laser Notice 50, dated June 24, 2007

How to Do an OTDR Test

1 Power the Tester

Charge the battery if necessary. Connect the AC adapter to AC power and to the adapter connector (12) shown in Figure 1. You can use the tester while the battery charges.

2 Select Settings

2-1 On the home screen, tap the test setup panel (see Figure 2).

2-2 On the **CHANGE TEST** screen, tap **EDIT**.

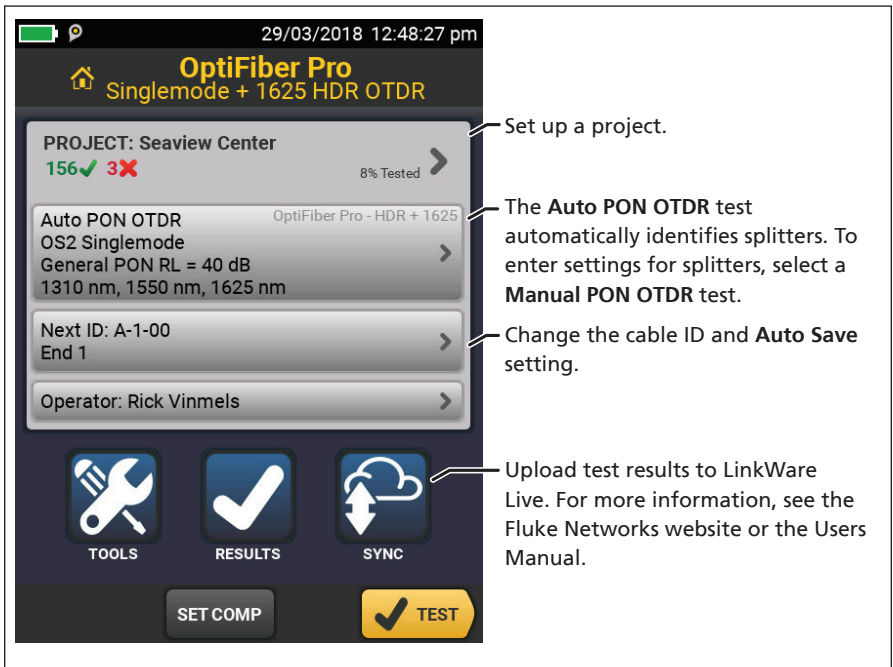
2-3 On the **TEST SETUP** screen, tap the panels to change settings:

- **Test Type:** Try **Auto PON OTDR**.

The **Manual PON OTDR** test includes **Splitter Setup** settings that let you enter **Splitter Ratios**. To locate and identify splitters, tap **DISCOVER** on the **SPLITTER SETUP** screen.

- **Launch Compensation:** This function removes the effects of launch and tail cords from the test results. To use it, select **On**, then tap **SET COMP** on the home screen to select a compensation method.
- **Macrobend Detection:** The default of 0.50 dB is suitable for most links. To change the setting, use a **Manual PON OTDR** test.
- **Wavelength, Fiber Type, Test Limit:** Select settings that are applicable to the link.

2-4 To save the settings, tap **SAVE** on the **TEST SETUP** screen.



BV01.EP5

Figure 2. Panels on the Home Screen

3 Do the OTDR Test

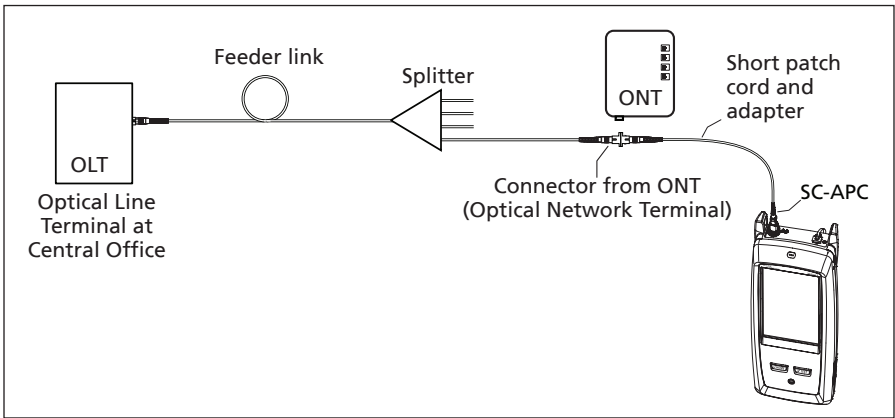
⚠ Caution

Do not connect PC or UPC connectors to the HDR OTDR port. Doing so can damage the port's APC endface, and the large reflection at the OTDR port can cause unreliable test results.

3-1 Inspect all connectors and clean as necessary.

3-2 Connect the tester to the PON link (Figure 3).

3-3 Tap **TEST** or press **✓TEST**.

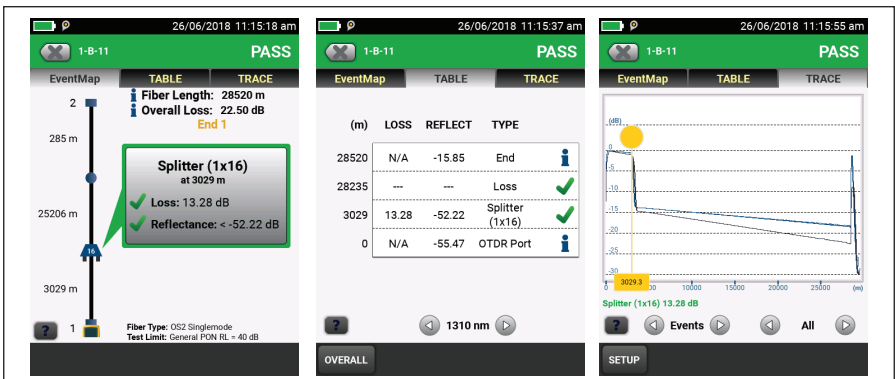


BV02.EPS

Figure 3. Typical Connection to an Out-of-Service PON Link

4 Examine the Results

The tester shows the OTDR results in three formats:



BV26.EPS

Figure 4. Examples of PON OTDR Results Screens

5 Save the Results

Tap **SAVE** if the test passed or **FIX LATER** if the test failed. The tester saves the results in the **DEFAULT** project, unless you selected a different project.

Registration

Registering your product with Fluke Networks gives you access to valuable information on product updates, troubleshooting tips, and other support services.

To register, use LinkWare PC software. Download LinkWare PC from the Fluke Networks website.

Contact Fluke Networks



www.flukenetworks.com/support



info@flukenetworks.com



1-800-283-5853, +1-425-446-5500



Fluke Networks
6920 Seaway Boulevard, MS 143F
Everett WA 98203 USA

Fluke Networks operates in more than 50 countries worldwide. For more contact information, visit our website.

General Specifications

Battery	Type: Lithium-ion Charging Temperature: 0 °C to +45 °C (+32 °F to +113 °F)
Power Adapter	Input: 100 to 240 VAC ±10%, 50/60Hz Output: 15 VDC, 2 A maximum Class II
Versiv 2 wireless radio*	Frequency ranges: 2.4 GHz band: 2412 MHz to 2484 MHz 5 GHz band: 4910 MHz to 5825 MHz Output power: <100 mW
Temperature	Operating: -10 °C to +45 °C (+14 °F to +113 °F) Storage: -10 °C to +60 °C (+14 °F to +140 °F)
Altitude	Operating: 4,000 m (3,200 m with AC adapter) Storage: 12,000 m
* For more information, go to www.flukenetworks.com/manuals and search for "Radio Frequency Data for Class A".	

LIMITED WARRANTY AND LIMITATION OF LIABILITY

Fluke Networks mainframe products will be free from defects in material and workmanship for one year from the date of purchase, unless stated otherwise herein. Parts, accessories, product repairs and services are warranted for 90 days, unless otherwise stated. Ni-Cad, Ni-MH and Li-Ion batteries, cables or other peripherals are all considered parts or accessories. This warranty does not cover damage from accident, neglect, misuse, alteration, contamination, or abnormal conditions of operation or handling. Resellers are not authorized to extend any other warranty on Fluke Networks' behalf. To obtain service during the warranty period, contact your nearest Fluke Networks authorized service center to obtain return authorization information, then send your defective product to that Service Center with a description of the problem.

For a list of authorized resellers, visit www.flukenetworks.com/wheretobuy.

THIS WARRANTY IS YOUR ONLY REMEDY. NO OTHER WARRANTIES, SUCH AS FITNESS FOR A PARTICULAR PURPOSE, ARE EXPRESSED OR IMPLIED. FLUKE NETWORKS IS NOT LIABLE FOR ANY SPECIAL, INDIRECT, INCIDENTAL OR CONSEQUENTIAL DAMAGES OR LOSSES, ARISING FROM ANY CAUSE OR THEORY. Since some states or countries do not allow the exclusion or limitation of an implied warranty or of incidental or consequential damages, this limitation of liability may not apply to you.

4/15

Fluke Networks
PO Box 777
Everett, WA 98206-0777
USA