

Main specifications of **α7Ⅲ**

	Body only	FE 28-70mm F3.5-5.6 Lens kit
General	Camera Type Lens mount	Interchangeable-lens digital camera E-mount
Image sensor	Type	35mm full frame (35.6×23.8mm), Exmor R CMOS sensor
	Number of Pixels Image Sensor Aspect Ratio	Approx. 24.2 megapixels (effective), Approx. 25.3 (Total) 3:2
Recording System (still image)	Anti-Dust System	Charge protection coating on optical filter and image sensor shift mechanism
	Recording Format Image Size (pixels) [3:2]	JPEG (DCF Ver. 2.0, Exif Ver. 2.31, MPF Baseline compliant), RAW (Sony ARW 2.3 format) [35mm full frame] L: 6000 × 4000 (24M), M: 3936 × 2624 (10M), S: 3008 × 2000 (6.0M) [APS-C] L: 3936 × 2624 (10M), M: 3008 × 2000 (6.0M), S: 1968 × 1312 (2.6M)
	Image Size (pixels) [16:9]	[35mm full frame] L: 6000 × 3376 (20M), M: 3936 × 2216 (8.7M), S: 3008 × 1688 (5.1M) [APS-C] L: 3936 × 2216 (8.7M), M: 3008 × 1688 (5.1M), S: 1968 × 1112 (2.2M)
	Image Quality Modes	RAW, RAW & JPEG (Extra fine, Fine, Standard), JPEG (Extra fine, Fine, Standard)
	Picture Effect	8 types: Posterization (Color), Posterization (B/W), Pop Color, Retro Photo, Partial Color (R/G/B/Y), High Contrast Monochrome, Toy Camera (Normal/Cool/Warm/Green/Magenta), Soft High-key, Rich-tone Monochrome
	Creative Style	Standard, Vivid, Neutral, Clear, Deep, Light, Portrait, Landscape, Sunset, Night Scene, Autumn leaves, Black & White, Sepia, Style Box (1-6), (Contrast (-3 to +3 steps), Saturation (-3 to +3 steps), Sharpness (-3 to +3 steps))
	Picture Profile	Yes (Off / PPI-PP10) Parameters: Black level, Gamma (Movie, Still, Cine1-4, ITU709, ITU709 [800%], S-Log2, S-Log3, HLG, HLG1-3), Black Gamma, Knee, Color Mode, Saturation, Color Phase, Color Depth, Detail, Copy, Reset
	Dynamic Range Functions	Off, Dynamic Range Optimizer (Auto/Level [1-5]), Auto High Dynamic Range (Auto Exposure Difference, Exposure Difference Level [1-6 EV, 1.0 EV step])
	Color Space	sRGB standard (with sYCC gamut) and Adobe RGB standard compatible with TRILUMINOS Color
	14bit RAW	Yes
	Uncompressed RAW	Yes
Recording System (movie)	Recording Format	XAVC S, AVCHD format Ver. 2.0 compliant
	Video Compression	XAVC S: MPEG-4 AVC/H.264, AVCHD: MPEG-4 AVC/H.264
	Audio Recording Format	XAVC S: LPCM 2ch, AVCHD: Dolby Digital (AC-3) 2ch, Dolby Digital Stereo Creator
	Color Space	xvYCC standard (x.v.Color when connected via HDMI cable) compatible with TRILUMINOS Color
	Picture Effect	Posterization (Color), Posterization (B/W), Pop Color, Retro Photo, Partial Color (R/G/B/Y), High Contrast Monochrome, Toy Camera (Normal/Cool/Warm/Green/Magenta), Soft High-key, Standard, Vivid, Neutral, Clear, Deep, Light, Portrait, Landscape, Sunset, Night Scene, Autumn leaves, Black & White, Sepia, Style Box (1-6), (Contrast (-3 to +3 steps), Saturation (-3 to +3 steps), Sharpness (-3 to +3 steps))
	Creative Style	Standard, Vivid, Neutral, Clear, Deep, Light, Portrait, Landscape, Sunset, Night Scene, Autumn leaves, Black & White, Sepia, Style Box (1-6), (Contrast (-3 to +3 steps), Saturation (-3 to +3 steps), Sharpness (-3 to +3 steps))
	Picture Profile	Yes (Off / PPI-PP10) Parameters: Black level, Gamma (Movie, Still, Cine1-4, ITU709, ITU709 [800%], S-Log2, S-Log3, HLG, HLG1-3), Black Gamma, Knee, Color Mode, Saturation, Color Phase, Color Depth, Detail, Copy, Reset
	Image Size (Pixels), NTSC	XAVC S 4K: 3840 × 2160 (30p, 100M), 3840 × 2160 (30p, 60M), 3840 × 2160 (24p, 60M) XAVC S HD: 1920 × 1080 (120p, 100M), 1920 × 1080 (120p, 60M), 1920 × 1080 (60p, 50M), 1920 × 1080 (30p, 50M), 1920 × 1080 (24p, 50M), 1920 × 1080 (24p, 60p, 25M), 1920 × 1080 (30p, 16M) AVCHD: 1920 × 1080 (60i, 24M, FX), 1920 × 1080 (60i, 17M, FH)
	Image Size (pixels), PAL	XAVC S 4K: 3840 × 2160 (25p, 100M), 3840 × 2160 (25p, 60M) XAVC S HD: 1920 × 1080 (100p, 100M), 1920 × 1080 (100p, 60M), 1920 × 1080 (50p, 50M), 1920 × 1080 (25p, 50M), 1920 × 1080 (50p, 25M), 1920 × 1080 (50p, 17M, FH) AVCHD: 1920 × 1080 (50i, 24M, FX), 1920 × 1080 (50i, 17M, FH)
	Slow & Quick Motion (S&Q) / Image size	NTSC mode: 1920 × 1080 (60p, 30p, 24p) PAL mode: 1920 × 1080 (50p, 25p)
	Slow & Quick Motion (S&Q) / Image frame rate	NTSC mode: 1fps, 2fps, 4fps, 8fps, 15fps, 30fps, 60fps, 120fps PAL mode: 1fps, 2fps, 3fps, 6fps, 12fps, 25fps, 50fps, 100fps
	Movie Functions	Audio Level Display, Audio Rec Level, PAL/NTSC Selector, Proxy Recording (1280 × 720, Approx.9Mbps), TC/UB (TC Preset/UB Preset/TC Format/TC Run/TC Make/UB Time Rec), Auto Slow Shutter, Rec Control, Clean HDMI, Info. (ON/OFF selectable), Gamma Disp, Assist 3840 × 2160 (25p), 1920 × 1080 (50p), 1920 × 1080 (50i), 1920 × 1080 (24p), 1920 × 1080 (60p), 1920 × 1080 (60i), 3840 × 2160 (30p), 3840 × 2160 (24p), YCbCr 4:2:2 8-bit / RGB 8-bit
Recording System	Location Information Link From Smartphone	Yes
	Media	Memory Stick PRO Duo, Memory Stick PRO-HG Duo, Memory Stick Micro (M2), SD memory card, SDHC memory card (UHS-I/II compliant), SDXC memory card (UHS-I/II compliant), microSD memory card, microSDHC memory card, microSDXC memory card
	Memory Card Slot	SLOT1: Slot for SD (UHS-I/II compliant) memory card SLOT2: Multi slot for Memory Stick Duo/SD (UHS-I compliant) memory card
	Recording mode on 2 memory cards	Simult. Rec (Still), Simult. Rec (Movie), Simult. Rec (Still/Movie), Sort (JPEG/RAW), Sort (Still/Movie), Auto Switch Media (On/Off), Copy
Noise reduction	Noise Reduction	Long exposure NR: On/Off, available at shutter speeds longer than 1 sec. High ISO NR: Normal/Low/Off
	Multi Frame NR	-
White Balance	Modes	Auto / Daylight / Shade / Cloudy / Incandescent / Fluorescent <Warm White / Cool White / Day White / Daylight> / Flash / Underwater / Color Temperature <2500 to 9900K> & color filter <G7 to M7[57-step], A7 to B7[29-step]> / Custom
	AWB Micro Adjustment	Yes <G7 to M7,57-step>A7 to B7,29-step>
	Priority Set in AWB	Yes
	Bracketing	3 frames, H/L selectable
Focus	Focus Type	Fast Hybrid AF (phase-detection AF/contrast-detection AF) ^{*1}
	Focus Sensor	Exmor R CMOS sensor
	Focus Point	35mm full frame: 693 points (phase-detection AF), APS-C mode with FE lens: 299 points (phase-detection AF), with APS-C lens: 221 points (phase-detection AF) / 425 points (contrast-detection AF)
	Focus Sensitivity Range	EV-3 to EV20 (ISO100 equivalent with F2.0 lens attached)
	Focus Mode	AF-A (Automatic AF), AF-S (Single-shot AF), AF-C (Continuous AF), DMF (Direct Manual Focus), Manual Focus
	Focus Area	Wide (693 points (phase-detection AF), 425 points(contrast-detection AF)) / Zone / Center / Flexible Spot (S/M/L) / Expanded Flexible Spot / Lock-on AF / Wide / Zone / Center / Flexible Spot (S/M/L)/Expanded Flexible Spot
	Other Features	Eye-start AF (only with LA-EA2 or LA-EA4 attached (Sold separately)), Lock-on AF, Eye AF, AF micro adjustment with LA-EA2 or LA-EA4 (sold separately), Predictive control, Focus lock, AF Track Sens, Swt.V./H/AF Area, AF Area Regist.
	AF Illuminator	Yes (with Built-in LED type)
	AF Illuminator Range	Approx. 0.3m - approx. 3.0m (with FE 28-70mm F3.5-5.6 OSS attached)
	Focus Type With LA-EA3 (Sold separately)	Selectable (phase-detection, contrast-detection)
Exposure	Metering Type	1200-zone evaluative metering
	Metering Sensor	Exmor R CMOS sensor
	Metering Sensitivity	EV-3 to EV20 (at ISO100 equivalent with F2.0 lens attached)
	Metering Mode	Multi-segment, Center-weighted, Spot, Spot Standard/Large, Entire Screen Avg., Highlight +7, -5, 0EV [1/3 EV, 1/2 EV steps selectable] (with exposure compensation dial: +/- 3EV [1/3 EV steps])
	Exposure Compensation	-
	Exposure Bracketing	Bracket: Cont., Bracket: Single, 3/5/9 frames selectable. With 3 or 5 frames, in 1/3, 1/2, 2/3, 1.0, 2.0, or 3.0 EV increments, with 9 frames, in 1/3, 1/2, 2/3, or 1.0 EV increments.
	AE Lock	Locked when shutter button is pressed halfway. Available with AE lock button. (On/Off/Auto)
	Exposure Modes	AUTO (Auto), Programmed AE (P), Aperture priority (A), Shutter-speed priority (S), Manual (M), Movie (Programmed AE (P) / Aperture priority (A) / Shutter-speed priority (S) / Manual (M)), Slow & Quick Motion (Programmed AE (P) / Aperture priority (A) / Shutter-speed priority (S) / Manual (M))
	ISO sensitivity (Recommended Exposure Index)	Still images: ISO 100-51200 (ISO numbers up from ISO 50 to ISO 204800 can be set as expanded ISO range.) AUTO (ISO 100-12800, selectable lower limit and upper limit) Movies: ISO 100-51200 equivalent (ISO numbers up to ISO 102400 can be set as expanded ISO range.), AUTO (ISO 100-12800, selectable lower limit and upper limit)
	Anti-flicker Shoot.	Yes
	Scene Selection	Portrait, Sports Action, Macro, Landscape, Sunset, Night Scene, Night Portrait
Viewfinder	Viewfinder Type	1.3 cm (0.5-type) electronic viewfinder (color), XGA OLED
	Number of Dots	2,359,296 dots
	Brightness Control (Viewfinder)	Auto/Manual (5 steps between -2 and +2)
	Color Temperature Control	Manual (5 steps)

^{*1} Phase-detection AF may not work with certain lenses or may require lens software update. See Sony support page for details. ^{*2} With compatible Sony external flash. ^{*3} With compatible external flash. ^{*4} Varies according to shooting conditions or memory card used. ^{*5} Supports Micro USB compatible device. ^{*6} Sony accessories for the Accessory Shoe can be attached. ^{*7} The LCD screen is turned on, shot once every 30 seconds, operate zoom alternately between W and T ends, flash strobe once every two times, turn power off and on once every ten times. ^{*8} Continuous movie recording is possible for approximately 29 minutes (limited by product specifications). ^{*9} Indication recording time, which is defined by repeating the cycle: Power on, start recording, zoom, stand-by and power off. ^{*10} The total movie recording time. When the limit of the continuous movie recording time (29 minutes) is reached, let the camera continue movie recording by pressing the MOVIE button again. No other operation such as zoom is performed.

Trademarks & Remarks

• α, Exmor, Exmor R, BIONZ X, BRAVIA, SteadyShot, InfoLithium, Translucent Mirror Technology, Tru-Finder, Memory Stick, Memory Stick PRO Duo, Memory Stick PRO-HG Duo, PlayMemories Home, PlayMemories Mobile, PlayMemories Camera Apps, xv.Color, TRILUMINOS, TRILUMINOS Color, TRILUMINOS Display and XAVC S are trademarks or registered trademarks of Sony Mobile Communications AB. • AVCHD and XAVC are trademarks of Panasonic Corporation and Sony Corporation. • The SD Logo, SDHC Logo and SDXC Logo are trademarks of SD-3C, LLC. • The terms HDMI and HDMI High-Definition Multimedia Interface, and the HDMI Logo are trademarks or registered trademarks of HDMI Licensing Administrator, Inc. in the United States and other countries. • The Wi-Fi Protected Setup Identifier Mark is a mark of the Wi-Fi Alliance. • N-Mark is a registered trademark of the NFC Forum. • Dolby is a trademark of Dolby Laboratories. • WhiteMagic is a trademark of Japan Display Inc. • App Store is a service mark of Apple Inc. • Android, Google Play and Google Play logo are trademarks or registered trademarks of Google Inc. • Pad is a trademark of Apple Inc., registered in the U.S. and other countries. • All other company and product names mentioned herein are used for identification purposes only and may be the trademarks or registered trademarks of their respective owners. • InfoLithium is a lithium battery pack which can exchange data with compatible electronic equipment about its energy consumption. • Sony recommends that you use the battery pack with electronic equipment bearing the "InfoLithium" mark. • Screen displays and effects used to illustrate some functions are simulated. • For use of other companies' services and software, 1) other conditions for use may be applied. 2) updating of services and software may be stopped/terminated without prior notice. 3) the contents of services and software may be changed without prior notice. 4) other registrations or payments of other fees may be required.

Specifications and features are subject to change without notice. Product availability varies depending on market.

SONY

Interchangeable-lens digital camera



α7Ⅲ

	Body only	FE 28-70mm F3.5-5.6 Lens kit
Viewfinder (Cont.)	Field Coverage	100%
	Magnification	Approx. 0.78 x (with 50mm lens at infinity, -1m ¹)
	Dioptric Adjustment	-4.0 to +3.0m ⁻¹
	Eye Point	Approx. 23mm from the eyepiece lens, 18.5mm from the eyepiece frame at -1m ¹ (CIPA standard)
	Finder Frame Rate Selection	-
	Display Content	Graphic Display, Display All Info., No Disp. Info., Digital Level Gauge, Histogram
LCD Screen	Type	7.5cm (3.0-type) type TFT
	Number of Dots	9201,600 dots
	Touch Panel	Yes
	Brightness Control	Manual (5 steps between -2 and +2), Sunny Weather mode
	Adjustable Angle	Up by approx. 107 degrees, Down by approx. 41 degrees
	Display Selector (Finder/LCD)	Yes (Auto/Manual)
	Real-time Image Adjustment Display (LCD)	On/Off
	Quick Navi	Yes
	Focus Magnifier	Yes (35mm full frame: 5.9x, 11.7x, APS-C: 3.8x, 7.7x)
	Zebra	Yes (Selectable level + range or lower limit as custom setting)
	Peaking MF	Yes (Level setting: High/Mid/Low/Off, Color: White/Red/Yellow)
	Others	Grid Line (Rule of 3rds Grid/Square Grid/Diag. + Square Grid/Off), Movie Marker (Center/Aspect/Safety Zone/Guideframe)
	Display Contents	Graphic Display, Display All Info, No Disp. Info, Digital Level Gauge, Histogram, For viewfinder, Monitor Off
Other Features	PlayMemories Camera Apps™	-
	Clear Image Zoom	Still images: Approx. 2x Movies: Approx. 1.5x (4K), Approx. 2x (HD)
	Digital Zoom	Smart zoom (Still images) [35mm full frame] M: approx 1.5x, S: approx 2x [APS-C] M: approx 1.3x, S: approx 2x Digital zoom (Still images) [35mm full frame] L: approx 4x, M: approx 6.1x, S: approx 8x [APS-C] L: approx 4x, M: approx 5.2x, S: approx 8x Digital zoom (Movie) [35mm full frame] approx 4x [APS-C] approx 4x
	Face Detection	[Modes] Face Priority in AF (On/Off), Face Priority in Multi Metering (On/Off), Regist. Faces Priority (On/Off) [Face registration] Max. number of detectable: 8
	Others	Touch Focus (Available with LCD monitor or Viewfinder operation), ISO AUTO Min. SS, Bright Monitoring, Copyright Info, Set File Name, FTP Transfer Func., Help guide, Area Setting, Shop Front Mode, Video Light Mode, Zoom Ring Rotate
	Eye-Fi ready	-
Shutter	Type	Electronically-controlled, vertical-traverse, focal-plane type
	Shutter Speed	[Still images] 1/8000 to 30 sec, Bulb, [Movies] 1/8000 to 1/4 (1/3 steps) up to 1/60 in AUTO mode (up to 1/30 in Auto slow shutter mode),
	Flash Sync. Speed	1/250 sec. ²
	Electronic Front Curtain Shutter	Yes (ON/OFF)
	Silent Shooting	Yes (ON/OFF)
Image Stabilization	Type	Image Sensor-Shift mechanism with 5-axis compensation (Compensation depends on lens specifications)
	Compensation Effect	5.0 stops (based on CIPA standard. Pitch/yaw shake only. With Planar T* FE 50mm F1.4 ZA lens mounted. Long exposure NR off.)
Flash Control	Control	Pre-flash TTL
	Flash Compensation	+/- 3.0 EV (switchable between 1/3 and 1/2 EV steps)
	Flash Bracketing	3/5/9 frames selectable. With 3 or 5 frames, in 1/3, 1/2, 2/3, 1.0, 2.0, 3.0 EV increments, with 9 frames, in 1/3, 1/2, 2/3, 1.0 EV increments.
	Flash Modes	Flash off, Autoflash, Fill-flash, Slow Sync., Rear Sync., Red-eye reduction (on/off selectable), Wireless ³ , Hi-speed sync. ⁴
	External Flash Compatibility	Sony α System Flash compatible with Multi Interface Shoe, attach the shoe adaptor for flash compatible with Auto-lock accessory shoe
	FE Level Lock	Yes
	Wireless Control	Yes (Light signal: Available with Fill-flash, Slow Sync., Hi-speed sync. /Radio signal: Available with Fill-flash, Rear Sync., Slow Sync., Hi-speed sync.)
Drive	Drive Modes	Single Shooting, Continuous shooting (Hi-/Hi/Mid/Lo selectable), Self-timer, Self-timer (Cont.), Bracket: Single, Bracket: Cont., White Balance bracket, DR0 bracket Continuous shooting: Hi-: max. 10fps, Hi+: max. 8fps, Mid: max. 6fps, Lo: max. 3fps
	Continuous Drive Speed (approx. max.) ⁵	JPEG Extra fine L: 163 frames, JPEG Fine L: 172 frames, JPEG Standard L: 177 frames, RAW: 89 frames, RAW&JPG: 79 frames, RAW (Uncompressed): 40 frames, RAW (Uncompressed)&JPG: 36 frames
	Self-Timer	10 sec. delay/5 sec. delay/2 sec. delay/Continuous self-timer (3 frames after 10 sec. delay/5 frames after 10 sec. delay/3 frames after 5 sec. delay/3 frames after 2 sec. delay/5 frames after 2 sec. delay)/Bracketing self-timer
Playback	Photo Capture	Yes
	Modes	Single (with or without shooting information Y RGB histogram & highlight/shadow warning), 9/25-frame index view, Enlarged display mode (L: 18.8x, M: 12.3x, S: 9.4x), Auto Review (10/5/2 sec. Off), Image orientation (Auto/Manual/Off selectable), Slideshow, Folder selection (Date/Still/AVCHD/XAVC S HD/XAVC S 4K), Forward/Rewind (movie), Delete, Protect, Rating, Disp. Cont Shoot Grip
Interface	PC Interface	Mass-storage, MTP, PC remote
	Multi / Micro USB Terminal ^{1,5}	Yes
	USB Type-C™ Terminal	Yes (SuperSpeed USB (USB 3.1 Gen 1) compatible)
	NFC™	Yes (NFC forum Type 3 Tag compatible). One-touch remote, One-touch sharing
	Wireless LAN (Built-In)	Wi-Fi Compatible, IEEE 802.11b/g/n (2.4GHz band), View on Smartphone, Remote control via Smartphone, Send to Computer, View on TV
	Bluetooth	Yes (Bluetooth Standard Ver. 4.1 (2.4GHz band))
	HD Output	HDMI micro connector (Type-D), BRAVIA Sync (Control for HDMI), PhotoTV HD, 4K movie output/4K still image PB
	Multi Interface Shoe™	Yes
	Mic Terminal	Yes (3.5 mm Stereo minijack)
	Sync Terminal	-
	Headphone Terminal	Yes (3.5 mm Stereo minijack)
	Vertical Grip Connector	Yes
	PC Remote	Yes
	LAN Terminal	-
Audio	Microphone	Built-in stereo microphone or XLR-K2M/XLR-K1M/ECM-XYSTIM (sold separately)
	Speaker	Built-in, monaural
Print	Compatible Standards	Exif Print, Print Image Matching III, DPOF setting
Custom function	Type	Custom key settings, Programmable Setting (Body 2 sets / memory card 4 sets), My Menu, Reg. Cust Shoot Set
Lens Compensation	Setting	Peripheral Shading, Chromatic Aberration, Distortion
	Supplied Battery	One rechargeable battery pack NP-FZ100
Power	Battery Life (Still Images) ⁷	Approx. 610 shots (Viewfinder) / approx. 710 shots (LCD monitor) (CIPA standard)
	Battery Life (Movie, actual recording) ^{8,9}	Approx. 115 min (Viewfinder) / Approx. 125 min (LCD monitor) (CIPA standard)
	Battery Life (Movie, continuous recording) ^{10,11}	Approx. 200 min (Viewfinder) / Approx. 210 min (LCD monitor) (CIPA standard)
	Internal Battery Charge	Yes (Available via Multi/Micro USB Terminal or USB Type-C™ Terminal)
	Power Consumption With Viewfinder	Still images: approx. 3.2W (with FE 28-70mm F3.5-5.6 OSS lens attached), Movies: approx. 4.9W (with FE 28-70mm F3.5-5.6 OSS lens attached)
	Power Consumption With LCD Screen	Still images: approx. 2.8W (with FE 28-70mm F3.5-5.6 OSS lens attached), Movies: approx. 4.7W (with FE 28-70mm F3.5-5.6 OSS lens attached)
	USB Power Supply	Yes (Available via Multi/Micro USB Terminal or USB Type-C™ Terminal)
Others	Operating Temperature	32 -104 degrees F / 0 - 40 degrees C
Size & Weight	Dimensions (W x H x D)	Approx. 126.9mm x 95.6mm x 73.7mm, Approx. 126.9mm x 95.6mm x 62.7mm (from grip to monitor) / Approx. 5 x 3 7/8 x 3 inches, Approx. 5 x 3 7/8 x 2 1/2 inches (from grip to monitor)
	Weight	Approx. 650 g / approx. 1lb 7.0 oz (with battery and memory card included)
What's in The Box	Rechargeable Battery NP-FZ100, AC Adaptor, Shoulder strap, Body cap, Accessory shoe cap, Eyepiece cup, Micro USB cable	Rechargeable Battery NP-FZ100, AC Adaptor, Shoulder strap, Body cap, Accessory shoe cap, Eyepiece cup, Micro USB cable, Lens SEL2870

The Power of Imaging

α7 III

Perfection for all. Everything you need.

The α7 III packs some of the most advanced full-frame camera technology and features currently available into a high-performance body that is accessible to a wider spectrum of photographers and videographers, from enthusiast to pro. Every aspect of this remarkable camera has been refined for extraordinary full-frame image capture control and quality, from the image sensor and image processing system right down to the smallest operational details. If you're thinking about getting into serious image making, the Sony α7 III offers everything you need.



Exmor R
CMOS Sensor

BIONZ X

4D FOCUS

4K
HDR

35mm Full Frame 24.2 Mega pixels	ISO 100-51200	10 Frames Per Sec	Phase Detection 693 AF Points	Contrast Detection 425 AF Points	Eye AF	5-axis SteadyShot INSIDE
---	-------------------------	-------------------------	--	---	--------	--------------------------------

* Connect to an HDR (HLG) compatible Sony TV via a USB cable when displaying HDR (HLG) movies.
** Up to 10 fps in continuous "Hi+" mode, and up to 8 fps in continuous "Hi" mode. Maximum fps will depend on camera settings.

No.1 image sensor manufacturer for digital cameras and video recorders. Based on Sony research - April 2016 to March 2017 (over 50% market share).

WORLD'S MOST-SELECTED
No.1
IMAGE SENSOR

NEW in this guide marks an advancement over the α7 II.











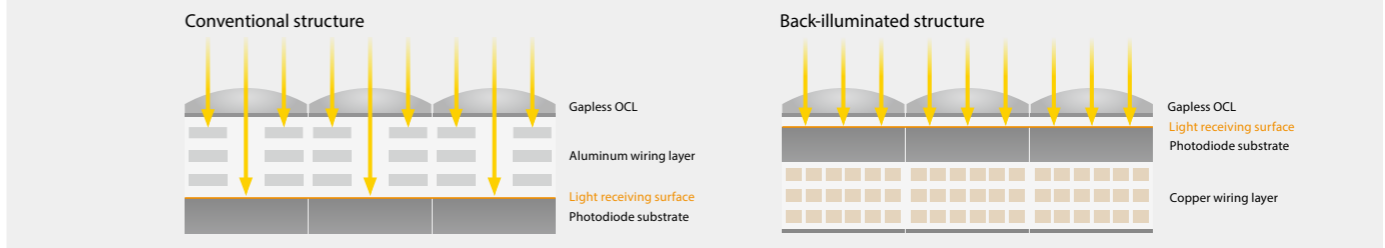
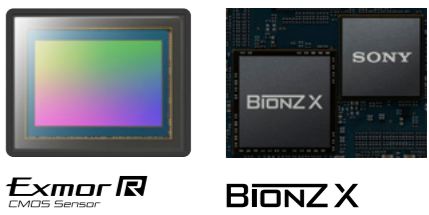
Quality that elevates your art

Another evolutionary leap from Sony delivers a newly-developed image sensor and refined image processing performance for high resolution, lower noise, higher dynamic range, and more refined rendering.

24.2 megapixel* full-frame Exmor R™ CMOS sensor and BIONZ X™ image processing NEW

A new 35mm full-frame back-illuminated CMOS sensor with approximately 24.2 effective megapixels works with a new front-end LSI and an enhanced BIONZ X image processing engine to

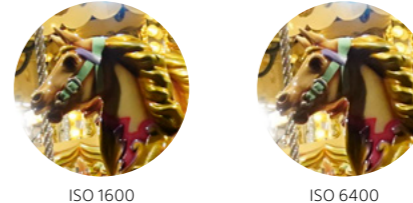
deliver more than twice** the data readout speed of the α 7 II, while data processing speed has been increased by approximately 1.8x.**



Standard 100 ~ 51200 ISO range expandable to 50 ~ 204800*

Outstanding image quality is achieved over a remarkably wide sensitivity range, with up to a 1.5 stop improvement in overall image quality.** Sony's Detail Reproduction Technology and Area-specific Noise Reduction further boost overall image

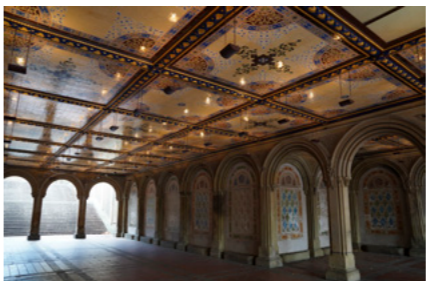
quality by effectively reducing noise while maintaining excellent detail.



* ISO expandable to 50 ~ 204800 for stills, 100 ~ 102400 for movies.
** Compared to the α 7 II. Sony tests.

Wide 15-stop dynamic range*

An impressive 15-stop dynamic range* at low sensitivities provides smooth gradation from the brightest highlights to the deepest shadows, so you have greater freedom to capture scenes as you see them, even in challenging lighting conditions.



* Approximate. Sony tests.

More vivid, natural color reproduction

Color reproduction reaches new heights of realism in the α 7 III, achieving beautiful, natural rendering of subtle skin tones, dazzling azure skies, and every other hue that nature offers. Faithful color reproduction and outstanding detail can help bring your photographic vision to life.



14-bit RAW Output

The digital output from the image sensor's AD converter is processed in 16-bit form by the front-end LSI and BIONZ X processor before being

output as compressed or uncompressed 14-bit RAW files. The result is smoother, more natural gradations that contribute to higher overall

image quality. The enhanced image processing system makes 14-bit RAW output available even when shooting in silent or continuous mode.*

* Limited to 12 bits during compressed RAW continuous shooting, BULB exposure, or when Long Exposure NR is ON.



Fast, reliable AF keeps the creativity flowing

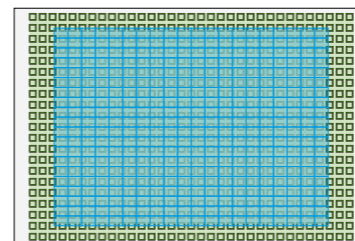
Leading AF technology inherited from the $\alpha 9$ has been optimized for the $\alpha 7$ III, for consistently fast, accurate focus with just about any subject.



4D Focus taken to the next level NEW

Wide: 693 point full-area phase-detection AF

693 phase-detection points in a high-density focal plane phase-detection AF system cover approximately 93% of the image area, providing exceptionally wide AF coverage and framing freedom. 425 contrast AF points also contribute to enhanced image-wide AF performance. Wide coverage and high density ensure reliable focus in just about any scene.

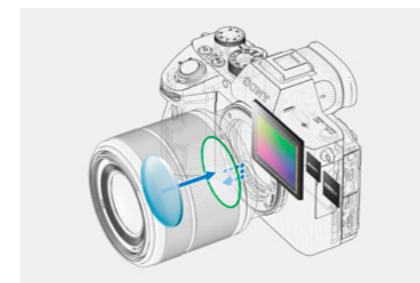


■ Phase-detection AF coverage (693 points)
■ Contrast-detection AF coverage (425 points)

Fast: Up to 2x AF speed*

Fast phase detection AF works with precision contrast AF to deliver notably improved Fast Hybrid AF System performance. AF response is up to 2x faster than previous systems*, achieving fast, reliable focus even with moving subjects in difficult lighting.

* Compared to the $\alpha 7$ II. Low light. Sony tests.



Steadfast: Doubled subject tracking performance*

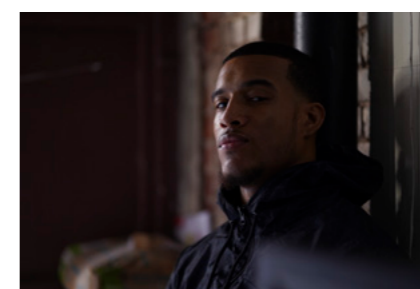
Motion prediction algorithms inherited from the $\alpha 9$ have been optimized for the $\alpha 7$ III to provide approximately doubled tracking performance*. Even complex subject motion can be tracked and sudden movements can be predicted with greater precision than ever before.

* Compared to the $\alpha 7$ II. Sony tests.



Reliable AF down to EV-3 brightness

Advanced AF algorithms contribute to high AF precision down to light levels as low as EV-3 (ISO 100 equivalent, F2.0 lens) in the AF-S mode. AF is more precise and reliable in dark scenes.



Focal plane phase-detection AF with A-mount lenses*

Focal plane phase-detection AF also functions with A-mount lenses* mounted via the LA-EA3 adaptor, providing wide-area coverage, fast response, and high tracking performance.

* With SSM or SAM lenses only. With the LA-EA3 mount adaptor. Focal plane phase-detection AF not supported for movie recording. AF-C can only be used when the "Phase detection" AF system is selected, but focus is fixed at the first frame during continuous shooting in any mode other than "Continuous: Lo" (Hi+, Hi, Mid).

AF tracking sensitivity NEW

The sensitivity with which autofocus will follow subjects that move outside the focus area can be adjusted in 5 steps when shooting stills. Higher sensitivity is best for subjects at varying distances, while lower sensitivities can keep focus on a subject that is briefly obscured by other objects.

Convenient AF features NEW

The Switch Vertical and Horizontal AF Area function makes it possible to use separate or identical focus areas and points for horizontal and vertical camera orientations. AF Area Registration can be used to memorize and instantly recall frequently used focus point settings via custom button assignments.

Expand Flexible Spot NEW

When the selected AF point loses track of or is not positioned on a moving subject, Expand Flexible Spot mode automatically directs surrounding AF points to restore focus instantly on that subject.

Eye AF revolutionizes portraiture

The ability to use Eye AF in the AF-C mode can totally transform your portraiture, easily maintaining optimum focus on subjects in motion. Other AF operation enhancements make a difference too.

Eye AF with AF-C mode support NEW

Eye AF automatically detects and focuses on the subject's eye, letting you easily snap impressive portraits of subjects in natural poses.

High detection precision and speed result in dependable tracking performance when shooting moving portrait subjects. Eye AF is fast and

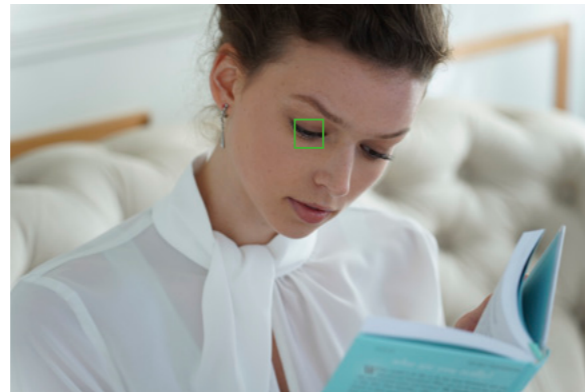
accurate in situations that would challenge previous systems.* A-mount lenses mounted via an adaptor are also supported.**

* Compared to the α 7 II.

** With SSM or SAM lenses only. With the LA-EA3 mount adaptor. Eye AF not supported for movie recording. AF-C can only be used when the "Phase detection" AF system is selected, but focus is fixed at the first frame during continuous shooting in any mode other than "Continuous: Lo" (Hi+, Hi, Mid).



Eye AF can lock on even while the subject is turning around



Subject looking down



Backlit with face in partial darkness



Obstacles obscure part of the face (glasses, hands, etc.)

Versatile, accurate focus

Touch operation features NEW

Touch the monitor screen to specify the desired focus point for stills or movies. Double-tap any point for a magnified view when focusing manually. The monitor touchpad function allows the focus frame to be dragged to any desired point with a fingertip while viewing through the viewfinder.



Touch Focus function

AF in Focus Magnifier NEW

By magnifying the selected focus area while using autofocus to shoot stills this function makes it easier to achieve perfect focus, especially for macro photography and other critical applications.

Easily capture dynamic slices of the action

Leading AF tracking performance plus high-speed continuous shooting capability whether shooting with the mechanical or silent shutter make it easier than ever to capture perfect slices of sports, wildlife, or lifestyle action.

10

fps

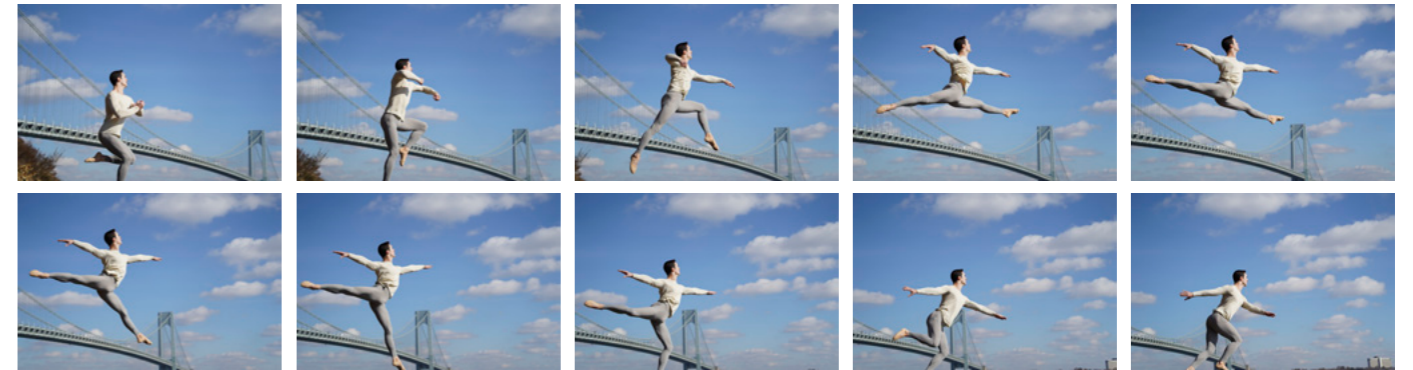
Up to 10fps* continuous shooting, as many as 177 shots**, with AF/AE tracking

Whether shooting in the standard mechanical or silent electronic shutter mode, the α 7 III allows continuous shooting at up to 10 fps* with accurate AF/AE tracking. This makes it possible to capture moving subjects while taking full advantage of the cam-

era's resolution. It is also possible to shoot continuously at up to 8 fps* in live view mode, with minimal viewfinder/monitor display lag for easy, stable framing even with intense subject motion. Increased burst speed is complemented by a larger

buffer memory, increased overall system speed, UHS-II support, and other refinements that allow up to 177 standard JPEG images, up to 89 compressed RAW images, or up to 40 uncompressed RAW images to be captured in one continuous burst.**

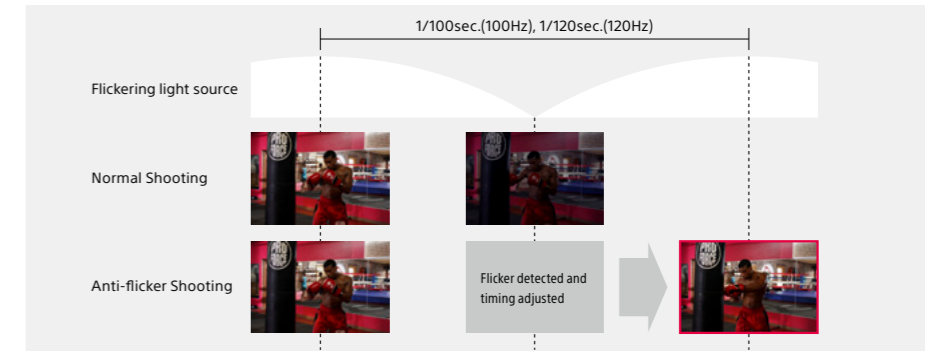
* Up to 10 fps in continuous "Hi+" mode, and up to 8 fps in continuous "Hi" mode. Maximum fps will depend on camera settings. Some distortion may occur with fast-moving subjects or if the camera is moved sideways rapidly while shooting in silent mode.
** "Hi+" continuous mode with UHS-II compatible SDXC memory card. Sony test conditions.



Anti-flicker shooting NEW

Flicker from fluorescent lights and other artificial lighting can ruin still images if it and the shutter timing are out of sync. The α 7 III automatically detects flicker and adjusts shutter timing to eliminate its effects.

* Only 100 Hz and 120 Hz flicker is detected. Continuous shooting speed may decrease. Anti-flicker shooting is not available during silent shooting, BULB exposure, or movie recording.



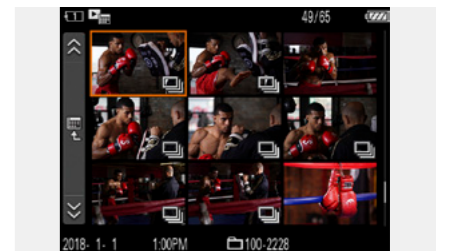
Improved operability while writing to memory card NEW

The Fn menu can be accessed and edited immediately after continuous shooting while data writing is in progress*, as can the menus and parameters. It is also possible to immediately access the playback display, with the number of still images remaining to be written shown during playback.

* Not all menu parameters can be edited while data is being written to the memory card.

Display continuous shooting group NEW

Images shot in continuous mode can be reviewed as groups, and the play index display has been significantly improved. Continuous groups can be deleted or protected in one quick operation to save time on location.



A new high-resolution 4K movie experience

Movie quality and production versatility are significantly enhanced with high-resolution 4K oversampled at 6K, plus HDR support for spectacular dynamic range.



High-resolution 4K* movies NEW

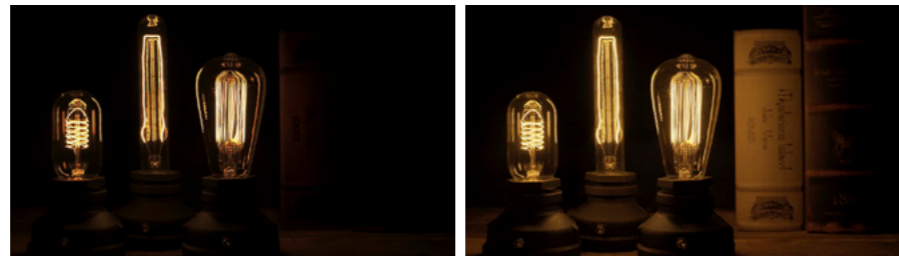
Full pixel readout with no pixel binning makes it possible to condense approximately 2.4 times** the amount of data required for 4K (the equivalent of the amount of data required for 6K) into 3840 x 2160 4K output. This oversampling process plus full-frame pixel readout without binning results in the highest possible 4K movie image quality.



* A Class 10 or higher SDHC/SDXC card is required for XAVC S format movie recording. UHS speed class 3 or higher is required for 100 Mbps recording.
** 24p recording. Approx. 1.6 times for 30p recording.

HLG (Hybrid Log-Gamma)*** support for instant HDR workflow NEW

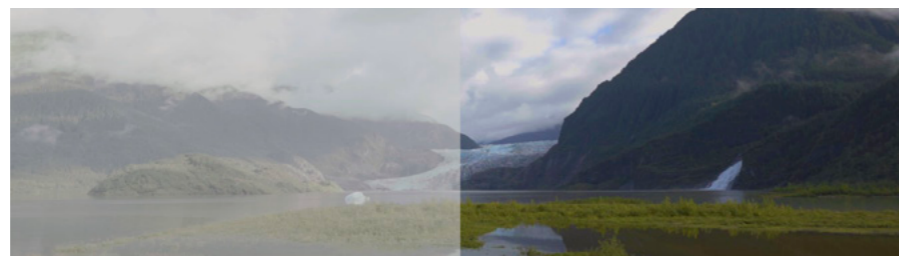
Movies recorded using the HLG*** profile will appear true-to-life with fewer blocked shadows and blown highlights when played back on an HDR (HLG) compatible TV, without the need for color grading. The BT.2020 color space is supported, providing a wider color gamut.



*** Connect to an HDR (HLG) compatible Sony TV via a USB cable when displaying HDR (HLG) movies.

S-Log3 for wide 14-stop dynamic range NEW

In addition to S-Log2, S-Log3 is available for better gradation from shadows to mid-tones (18% gray) and a wide dynamic range of up to 14 stops for 4K and other movie formats. A new color S-Gamut3 color space that is a refined version of S-Gamut is also provided.



Gamma Display Assist

Gamma Display Assist allows monitoring with more natural contrast and color when shooting with an S-Log profile. S-Log2 and S-Log3 are converted to ITU709 (800%) gamma for monitor and viewfinder display. For HLG recording, HLG (709) and HLG (BT.2020) provide optimum display quality on monitors that offer corresponding color space support.

Proxy recording NEW

4K movies and lower-resolution proxy movies can be recorded simultaneously. The smaller proxy files are ideal for quick previewing or pre-editing.

Slow and quick motion NEW

Frame rates from 1 fps to 120 fps can be selected in eight steps for up to 60x quick motion and 5x slow motion while recording with full HD quality.

S&Q Record Setting	
NTSC	24p 30p 60p
PAL	25p 50p
S&Q Frame Rate	
NTSC	1fps 2fps 4fps 8fps 15fps 30fps 60fps 120fps
PAL	1fps 2fps 3fps 6fps 12fps 25fps 50fps 100fps

Note: Sound not recorded. Class 10 or higher SDHC/SDXC card required.



Fast Hybrid AF now for movies too NEW

Fast Hybrid AF is now available for movie recording, providing a wide AF area that is similar to that provided for still images. AF now accurately locks onto movie subjects over a wider area.



AF drive speed option NEW

Three AF drive speed settings are available to meet a wide variety of shooting needs: "Fast," "Standard," and "Slow." The "Slow" setting provides exceptionally smooth, gradual focus that expands the range of expressive options available for creative moviemaking.

AF tracking sensitivity for movies NEW

The **α7 III** makes it possible to adjust autofocus sensitivity for movies as well as stills. Choose the Standard or Responsive sensitivity setting to provide optimum tracking performance with the scene and subjects being recorded.

Auto Power Off Temperature* NEW

This function sets the temperature at which the camera will automatically shut off. "High" allows longer movie recording times when the camera is mounted on a tripod.

* Set to "Standard" for handheld shooting. Use a tripod or other support when "High" is selected. Shooting time may vary according to environmental conditions and camera temperature when set to "High."

Photo Capture NEW

High-quality stills can be extracted from movies and stored separately: 8 megapixel stills from 4K movies, and 2 megapixel stills from full-HD movies.

Refined details for smooth shooting

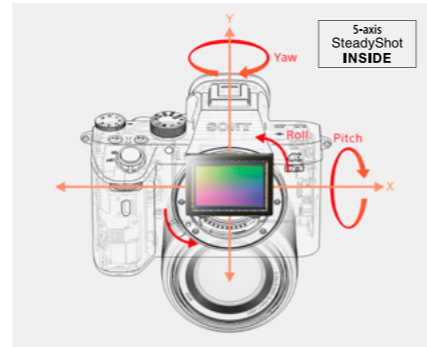
From viewing to fingertip control, every detail has been refined to support smooth, unencumbered shooting in any situation.

5-axis optical in-body image stabilization for a 5.0-step* shutter speed advantage

The advantages of Sony optical image stabilization technology are particularly important when shooting in low-light situations or with a telephoto lens. The **α7 III** system offers a 5.0-step* shutter speed advantage in 5 axes for movies

* CIPA standards. Pitch/yaw shake only. Planar T* FE 50mm F1.4 ZA lens. Long exposure NR off.

as well as stills, and it works with a wide range of lenses, including non-stabilized E-mount lenses and A-mount lenses via an adaptor. The viewfinder image is also stabilized for easier framing and focusing.



Pitch and yaw compensation



Compensation for commonly experienced pitch and yaw shake at long focal lengths.

Horizontal and vertical shift compensation



Compensation for X and Y-axis shift shake at high magnification (during macro photography, etc.).

Roll compensation

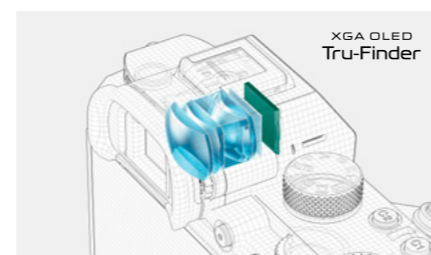


Compensation for roll shake on the Z-axis during long exposures. Most in-lens systems for interchangeable-lens cameras cannot compensate for roll shake.

2.36 million dot XGA OLED Tru-Finder™

A 2.36 million dot XGA OLED Tru-Finder offers everything you need for accurate viewing. High resolution and contrast are maintained right out to the corners, with excellent gradation and color reproduction for natural viewing. Magnification is 0.78x, with impres-

sive corner-to-corner clarity. ZEISS® T* Coating reduces reflections to maintain optimum clarity in difficult lighting conditions. EVF startup speed when the camera is switched on has been increased by approximately 40% compared to the **α7 II**, for stress-free operation.



Tilting 3.0 type LCD monitor

This large 3.0 type LCD touch-screen monitor features 922 thousand dots for excellent detail, and can be easily positioned for optimum viewing with a wide range of camera angles. The monitor tilts upwards by a maximum of 107°, and downwards by a maximum of 41° for flexible hold and framing.



High quality mode

The "High" viewfinder and monitor display mode takes maximum advantage of the data read from the 24.2 effective megapixel sensor to provide finer detail and a more natural overall view when focus is critical. The "Standard" setting provides longer battery life.

AF-ON button NEW

Press the AF-ON button to activate autofocus when shooting stills or movies. This makes it possible to release the shutter instantly to capture fleeting moments without having to go through the normal half-press focus sequence.



Multi-selector NEW

The multi-selector provides a fast, efficient way to shift focus points: simply press the up, down, left, or right button. When reviewing shots in playback mode the multi-selector is used to select the previous or next image.



Rating and protect functions facilitate on-location sorting NEW

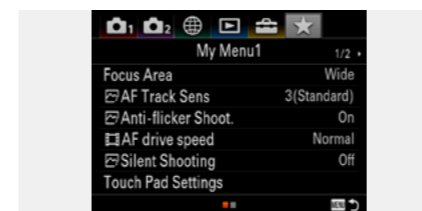
Ratings of from 1 to 5 stars can be applied to still images right from the camera controls. The rating and protect functions can be set via assigned custom buttons while viewing the review playback display on location or while traveling to save time.



Custom settings to match your personal shooting style

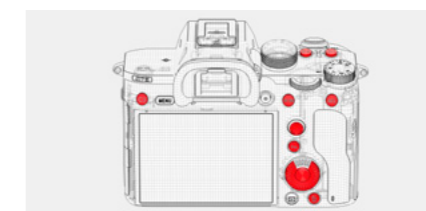
My Menu & new menu interface NEW

A new My Menu feature allows up to 30 items to be registered for instant recall. Registered items can be arranged in any convenient order, and unused items can be erased as required. The primary menus have also been reorganized for smoother search and operation.



Custom button assignments

Custom button assignments allow the camera interface to be customized for individual shooting preferences. Eleven buttons can be reassigned to select functions you choose, and separate functions can be assigned for the still, movie, and playback modes.



More customizable settings NEW

A new Recall Custom Setting During Hold feature makes it possible to temporarily recall often-used exposure, focus, drive mode, and other settings via assigned custom buttons. Complete camera setups, including modes and camera settings, can be registered in memory for instant recall via the mode dial. Camera setups can also be saved to a memory card and loaded into a separate **α7 III** body. And for an extra margin of control convenience, the control direction of the front and rear dials can be set via the menus.



Augmented endurance and reliability

Longer battery life, versatile power options, and solid reliability let you shoot longer, even in adverse conditions.

Up to 710* continuous shots

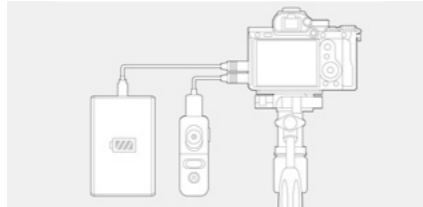
A new NP-FZ100 battery provides more than 2.2 times the capacity of the NP-FW50, allowing up to 710 images* to be captured on a full charge. The optional VG-C3EM Vertical Grip holds two batteries, and an optional BC-QZ1 Battery Charger offers fast, convenient charging capability.

* When using the LCD monitor. 610 images when using the viewfinder.



USB power

USB Type-C™ and Multi/Micro USB connectors allow external mobile batteries to power the camera for extended recording time. The Multi/Micro USB connector can be used with a remote control unit or other accessory while the USB Type-C™ connector is used for power supply or PC tethering.



Dual media slots, UHS-II support NEW

Separate media slots for SD card (UHS-II compatible) and SD card/Memory Stick allow data to be simultaneously or sequentially recorded to two cards (Auto Switch Media), or separate cards can be assigned to save RAW and JPEG files, or stills and movies. Data can also be copied between media cards.



Solid durability for tough conditions

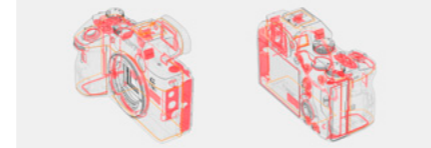
Body durability has been greatly enhanced by extensive use of a lightweight, high-rigidity magnesium alloy. The same alloy is also used in the redesigned grip. Additional rigidity has been achieved by increasing the number of screws securing the lens mount, ensuring high durability even when using telephoto lenses or other heavy optics.



Dust and moisture resistant*

Sealing is provided at critical locations to minimize dust and moisture ingress, ensuring reliable operation in challenging environments.

* Not guaranteed to be 100% dust and moisture proof.



Broad connectivity brings it all together

Connectivity is the key to image sharing, tethered shooting, and enhanced flexibility before, during, and after the shoot.

FTP file transfer via Wi-Fi NEW

This function allows convenient Wi-Fi transfer of still image files selected via the menu display to a specified remote FTP server. FTPS (File Transfer Protocol over SSL/TLS) is supported, allowing SSL or TLS encrypted data transfer for maximum security.

Location Information Link via Bluetooth NEW

After the camera has been paired to the PlayMemories Mobile™ app installed on a compatible mobile phone or tablet device, it can acquire location data from the mobile device and record that data with still images or movies. The PlayMemories Home™ application can then be used on a personal computer to organize images imported into the computer on a map.

* Bluetooth connectivity available with the following terminal devices (at the date of release):
- Android (Android 5.0 or later, Bluetooth 4.0 or later)
- iPhone/iPad (iPhone 4S or later, 3rd generation iPad or later)
Please refer to <http://www.sony.net/pmm/btg/> for more information.

Note: Use the latest version of PlayMemories Mobile.

Wi-Fi / NFC™ / QR code

With one-touch remote, a smartphone or tablet functions as a viewfinder/remote control. One-touch sharing transfers photos/videos to the device. Install the PlayMemories Mobile app on an NFC-enabled Android device via Wi-Fi, then touch

the device to the camera to connect. The camera now features QR code compatibility.

* PlayMemories Mobile must be installed on the smartphone or tablet device.

Tethered shooting via USB 3.1 NEW

A USB Type-C™ connector* (USB 3.1 Gen 1) enables high-speed data transfer for tethered shooting. A fast USB 3.1 connection can be particularly advantageous when transfer-

ring large RAW files. Still images can be stored both in the camera and on the computer so they can be reviewed without leaving the camera.

* USB Type-C cable not supplied



Powerful Software Support

Imaging Edge software suite from Sony NEW <http://www.sony.net/disoft/d/>



Sony's Imaging Edge software suite has been created to take maximum advantage of the potential inherent in Sony cameras for effortless shooting, extensive creative control,

and unparalleled image quality. "Remote" allows tethered shooting with live viewing on the computer screen. "Viewer" is the perfect solution for viewing, rating, sorting,

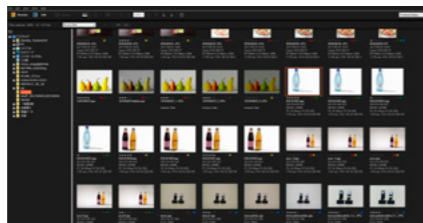
and generally managing an image library. And "Edit" is an advanced RAW developer that provides detailed image control as well as outstanding quality.



Remote



Viewer



Edit



PlayMemories Home™



It's easy to install this image management software onto a Windows or Mac computer, then use it for

easy viewing, editing and printing. You can also upload and share content via network services.

PlayMemories Mobile™



The PlayMemories Mobile app can be installed on a compatible smartphone or tablet to provide remote camera control and easy image transfer. The

new PlayMemories Mobile version provides updated remote camera control, with the same operability as available on the camera itself.



Other features for enhanced control

Additional metering modes expand versatility NEW

A new Highlight mode detects the brightest area in the frame to avoid blown highlights, and an Entire Screen Average mode can provide stable auto exposure through composition changes.

Continuous flash shooting at up to 10 fps* NEW

Continuous flash shooting at up to 10 fps* offers advanced capture capability. Slow sync and rear curtain sync** can be selected when shooting with wireless off-camera flash for even further enhanced versatility.

* Maximum continuous shooting speed will depend on the flash unit and settings used.
** Rear curtain sync is not available with optical wireless flash units.

Exposure standard adjustment NEW

The standard exposure value can be adjusted from -1 to +1 stop in 1/6 stop increments. This setting can be made separately for each metering mode.

Advanced P-TTL flash metering NEW

Data acquired from reflected pre-flash light is used for precision flash control. The pre-flash data is combined with distance data from the lens to emphasize lighting conditions around the subject and reliably avoid under- or over-exposure due to background or clothing color.

Priority Set in AWB NEW

When incandescent lamps or similar are the primary light source and white balance is set to Auto, the color tone priority can be set to Standard, Ambience, or White. Ambience priority produces a warm tone, while white priority is designed to provide accurate white reproduction.

File name and copyright info NEW

The first three characters of still image file names can now be edited for easier identification, and copyright information can be automatically embedded in still image files. Recording the photographer's name and author's name along with images provides basic copyright protection.

Number of recordable frames for single media

(Image size L 24M, aspect ratio 3:2)

	8GB	16GB	32GB	64GB
Standard	1,100	2,300	4,600	9,200
Fine	790	1,600	3,200	6,400
Extra fine	435	870	1,750	3,500
RAW & JPEG* (Compressed RAW)	215	435	870	1,750
RAW (Compressed RAW)	295	600	1,200	2,400
RAW & JPEG* (Uncompressed RAW)	125	255	510	1,000
RAW (Uncompressed RAW)	150	305	610	1,200

Movie recording time for single media

(Hours:Minutes:Seconds)

	8GB	16GB	32GB	64GB
XAVC S 4K	30p 100M/ 25p 100M	0:08:00	0:15:00	0:35:00
	30p 60M/ 25p 60M	0:10:00	0:30:00	1:00:00
	24p 100M	0:08:00	0:15:00	0:35:00
	24p 60M	0:10:00	0:30:00	1:00:00
XAVC S HD	120p 100M/ 100p 100M	0:08:00	0:15:00	0:35:00
	120p 60M/ 100p 60M	0:10:00	0:30:00	1:00:00
	60p 50M/ 50p 50M	0:15:00	0:35:00	1:15:00
	60p 25M/ 50p 25M	0:30:00	1:10:00	2:25:00
AVCHD	30p 50M/ 25p 50M	0:15:00	0:35:00	1:15:00
	30p 16M/ 25p 16M	0:50:00	1:50:00	3:50:00
	24p 50M	0:15:00	0:35:00	1:15:00
	60i 24M (FX)/ 50i 24M (FX)	0:40:00	1:25:00	2:55:00
	60i 17M (FH)/ 50i 17M (FH)	0:55:00	2:00:00	4:05:00

* Recommended memory cards for movie recording in AVCHD/MP4 formats: Memory Stick PRO Duo (Mark2), Memory Stick PRO-HG Duo, SD memory card/SDXC memory card (Class 4 or more)
* Recommended memory card for movie recording in XAVC S format: SDHC/SDXC memory card of Class 10 or higher
* The numbers in the table show approximate maximum recordable time obtained by totaling all movie files.
* AVCHD movies are automatically divided into separate files up to a maximum of 2GB each.

* JPEG quality set to "Fine".

Controls



- 1 Hook for shoulder strap
- 2 Microphone jack
- 3 Headphones jack
- 4 HDMI micro jack
- 5 USB Type-C™ terminal
- 6 Charge lamp
- 7 Multi/Micro USB terminal
- 8 Mode dial
- 9 Microphone
- 10 Image sensor position mark
- 11 Speaker
- 12 Multi Interface Shoe
- 13 Power switch
- 14 Shutter button
- 15 C1 (Custom 1) button
- 16 C2 (Custom 2) button
- 17 Exposure compensation dial
- 18 AF illuminator/Self-timer lamp
- 19 Front dial
- 20 Remote sensor
- 21 Lens release button
- 22 Mount index
- 23 Mount
- 24 Image sensor
- 25 Lens contacts

α Lenses to spark your imagination



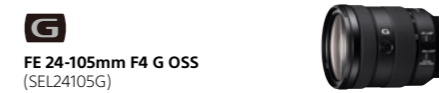
Ultra wide zoom for dynamic spatial expression



FE 12-24mm F4 G (SEL1224G)



A compact, lightweight comprehensive zoom



FE 24-105mm F4 G OSS (SEL24105G)



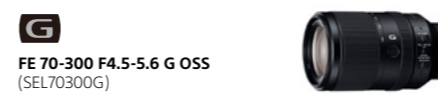
G Lens quality and constant F4 in a compact telephoto zoom



FE 70-200mm F4 G OSS (SEL70200G)



A telephoto zoom to reach 300mm



FE 70-300 F4.5-5.6 G OSS (SEL70300G)



A high performance full frame ZEISS® wide angle zoom



Vario-Tessar T* FE 16-35mm F4 ZA OSS (SEL1635Z)



A compact, standard zoom with constant F4 aperture



Vario-Tessar T* FE 24-70mm F4 ZA OSS (SEL2470Z)

α Library Enter the exciting world of Sony α products through a Library, the new photography-themed application for tablets.

Download on the App Store | GET IT ON Google play | Go to Google Play for Android Tablet. For iPad, go to App Store. Then search for "sony α library".



- 26 Eye sensor
- 27 Viewfinder
- 28 Eyepiece cup
- 29 C3 button (Custom button 3)
- 30 MENU button
- 31 Monitor
- 32 Playback button
- 33 MOVIE button
- 34 Rear dial
- 35 For shooting: AEL button
- 36 For viewing: Image index button
- 37 Multi-selector
- 38 For shooting: Fn (Function) button
- 39 Control wheel
- 40 Access lamp
- 41 For shooting: C4 button (Custom button 4)
- 42 Battery insertion slot
- 43 Tripod socket hole
- 44 Diopter-adjustment dial
- 45 Media slot cover switch
- 46 Hook for shoulder strap
- 47 N mark

Lighting accessories for extra creative control

High-speed continuous flash keeps up with the 10 fps* continuous shooting capability of the **α7 III** for dramatically expanded creative lighting potential.

* Maximum continuous shooting speed will depend on the flash and shooting settings used.

High-output, high-speed flash with wireless radio control

Multi Interface Shoe Radio-control LED Light



- High-power flash: guide number 60 (200mm at ISO100 in meters)
- 20mm (14mm with wide panel) to 200mm coverage (35mm equivalent)
- Up to 220 consecutive flashes (with NiMH batteries)
- 1.7 sec. charge cycle time / 0.6 sec with optional External Battery Adaptor FA-EBA1. (with NiMH batteries)
- Original Sony Quick Shift Bounce mechanism for fast flash positioning
- Direct output adjustment buttons
- Custom keys and TTL level memory
- Comprehensive optical and radio wireless control (Up to 15 flash units can be assigned to up to 5 groups)

HVL-F60RM Main Specifications

Basic Information	Dimension (Approx., WxHxD)	78.1mm x 139.5mm x 104.6mm 3 1/8inches x 5 1/2inches x 4 1/8inches
	Weight (Approx.)	449g / 15.9 oz (only main unit)
Type	Type	Auto electronic flash (clip-on type) with pre-flash metering
	Shoe type	Multi Interface Shoe
Flash	Maximum Guide number	60 (Flash coverage setting 200mm, STD flash distribution, at ISO100 in meters)
	Flash coverage	AUTO/MANUAL (20mm-200mm) Angle of view of at 14mm focal length is also covered with the wide panel
	Flash mode	TTL/MANUAL/MULTI
	Flash duration (Approx.)	Within 2.8ms (1/1 MANUAL)
	Color temperature (Approx.)	5500K
	Frequency (Approx.)	0.1-2.5 seconds (Alkaline battery)/0.1-1.7 seconds (Ni-MH battery)
	Repetition (Approx.)	More than 150 times (Alkaline battery)/More than 220 times (Ni-MH battery)
	Continuous flash performance	40 flashes at 10 flashes per second ¹
	Bounce angle	Up 150deg (0deg/30deg/45deg/60deg/75deg/90deg/120deg/150deg) Down 8degLeft and right 90deg (0deg/30deg/45deg/60deg/90deg)
	Flash control	Flash control using pre-flash (P-TTL/ADI)
	Flash compensation	Yes ²
	Power Level switching	25 levels(1/1-1/256) 1/3 steps
	Other features	Test flash, High-speed sync (HSS), Modeling flash, Built-in wide panel (14mm), Built-in bounce sheet
AF illuminator	Operating range (Approx.)	0.5-3m ³ / 0.5-10m ⁴
Radio control wireless function	Radio controlled wireless flash	Yes (commander/receiver) ⁵
	Frequencies	2.4 GHz band
	Channels	14 Channels (Auto/manual)
	Communication distance (Approx.) ⁶	30m ⁷
	Groups	3 groups(TTL/MANUAL), 5 groups(group flash photography)
	Maximum Flash units	15 units
	Lighting ratio control	3 groups (TTL)
Optical control wireless function	Optical controlled wireless flash	Yes (controller/remote) ⁸
	Channels	4 Channels
	Communication distance (Approx.) ⁶	5m ⁷
	Groups / Lighting ratio control	3 groups / 3 groups (TTL)
LED light function	Center luminance intensity (Approx.)	1200 lx (0.5m)/300 lx (1m)
	Lighting distance (Approx.)	2m (when recording movies, set to ISO 3200 & F5.6)
	Focal length supported	35mm (35mm-format angle of view)
	Continuous lighting time (Approx.)	1hours (with Sony AA-size alkaline battery)
	Color temperature (Approx.)	5500K
	Power Level switching	15 steps
Other functions		Auto zoom control optimized for image sensor size ⁹ , Flash distribution setting, Auto WB adjustment ⁹ , Custom key settings, Memory settings, Remote release
Display	LCD panel	Yes (Dot matrix)
External connectors		Sync terminal (IN/OUT), Multi/Micro USB terminal
Power source	Power source	Four AA-size alkaline or Ni-MH batteries
Basic Information	Operating Temperature	0°C to +40°C / 32°F to 104°F

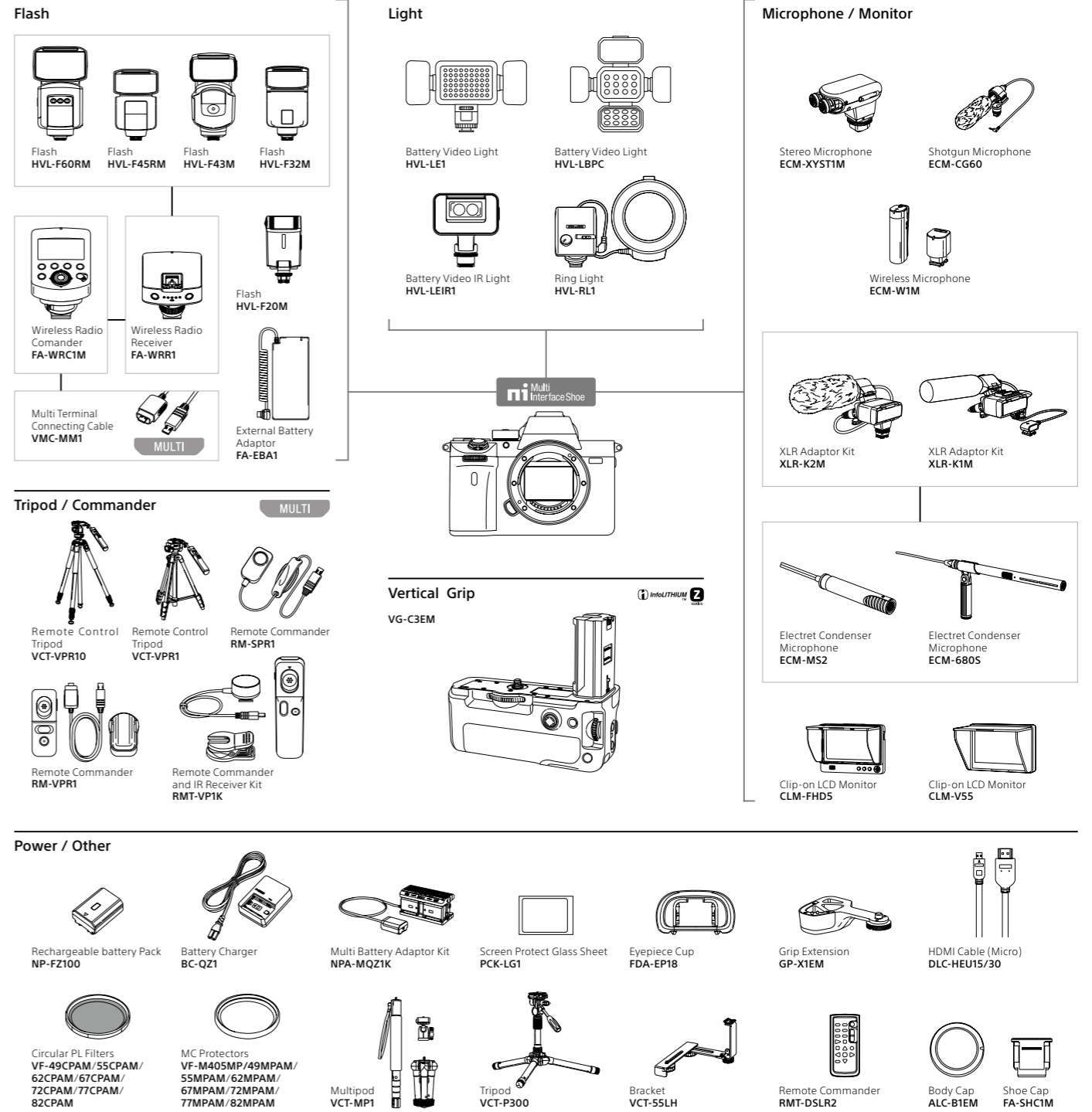
¹ Normal flash, power level 1/32, 105mm, NiMH battery ² Depending on the camera, this function is not available. For details, see Sony support page (<http://support.d-imaging.sony.co.jp/www/ccscs/accessories/>). ³ With a 50mm lens at F5.6 attached. [AF LED LEVEL] is set to [LOW]. ⁴ With a 50mm lens at F5.6 attached, [AF LED LEVEL] is set to [HIGH]. ⁵ Requires Radio Control Wireless Flash, Wireless Radio Receiver FA-WRR1 or Wireless Radio Commander FA-WRC1M (all sold separately). ⁶ May vary according to conditions. ⁷ Based on our measurement conditions. ⁸ Requires Optical Control Wireless Flash (sold separately). ⁹ Except DSLR-A100.



Other flash units & accessories



System chart



Recommended accessories



Sony | System Chart:
<http://www.sony.net/Products/diacc/systemchart/ilc/>



Sony | Photo Gallery:
http://www.sony.net/Products/di_photo_gallery/



Sony | Camera Channel:
<https://www.youtube.com/c/ImagingbySony>