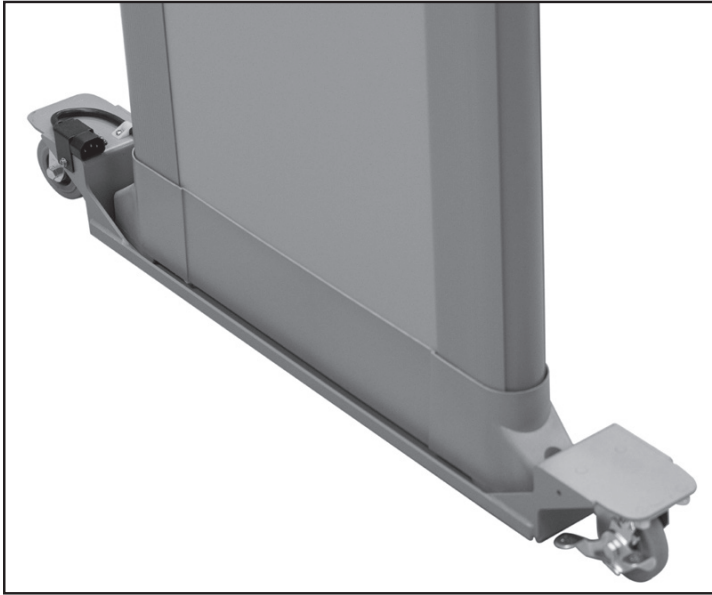


Walkthrough Caster Set (Dolly)

Made in the USA 

For use with Garrett PD-6500i and MZ 6100



Ideal for schools, special events and stadium use.

Allows full mobility of Garrett PD-6500i and MZ 6100 walk-through metal detectors by one person. No lifting required. Now you can move the detectors to a secure location when not in use and provide an unimpeded exit at the close of an event.



Extreme stability combined with portability.

Two fixed casters with locking devices provides stable operation of the detector, while two swivel casters provide maneuverability. The caster assembly can be permanently attached to the base of the walkthrough.

All terrain environment design.

3-inch wheels allow movement over any hard surfaces. Durable, power-coated steel allows use in all types of environmental conditions. Requires 36 x 89" (94 x 226 cm) passageway. For wind speeds up to 20 mph (32 kph).



Part Number	Color
1169101	Gray 
1169100*	Beige 

* Designed only for use with Garrett PD-6500i walk-through unit.

Shipping weight: 21 lbs (9.5 kg)

Shipping size: 40¼" x 8⅝" x 5"

NOTE: Not designed to work on CS5000, MT 5500, or the MS 3500.



1.800.234.6151 (USA and Canada)

1.972.494.6151

1881 W. State Street
Garland, TX 75042

Email: security@garrett.com