

# AXIS W110 Body Worn Camera

## Made for a safer workplace

AXIS W110 Body Worn Camera is a lighter, friendlier wearable camera for protecting staff and reducing bad behavior. It brings the benefits of wearable cameras to the workplace in sectors like retail, healthcare, transportation, and more. AXIS W110 Body Worn Camera deters, protects, and documents. Wearers and the public feel they're not alone, which contributes to a sense of well-being and a more peaceful workplace. AXIS W110 Body Worn Camera offers excellent image and audio quality with exceedingly sharp images and clear audio for forensic usability. The system features signed firmware and video, secure key storage, and true end-to-end encryption to ensure video integrity.

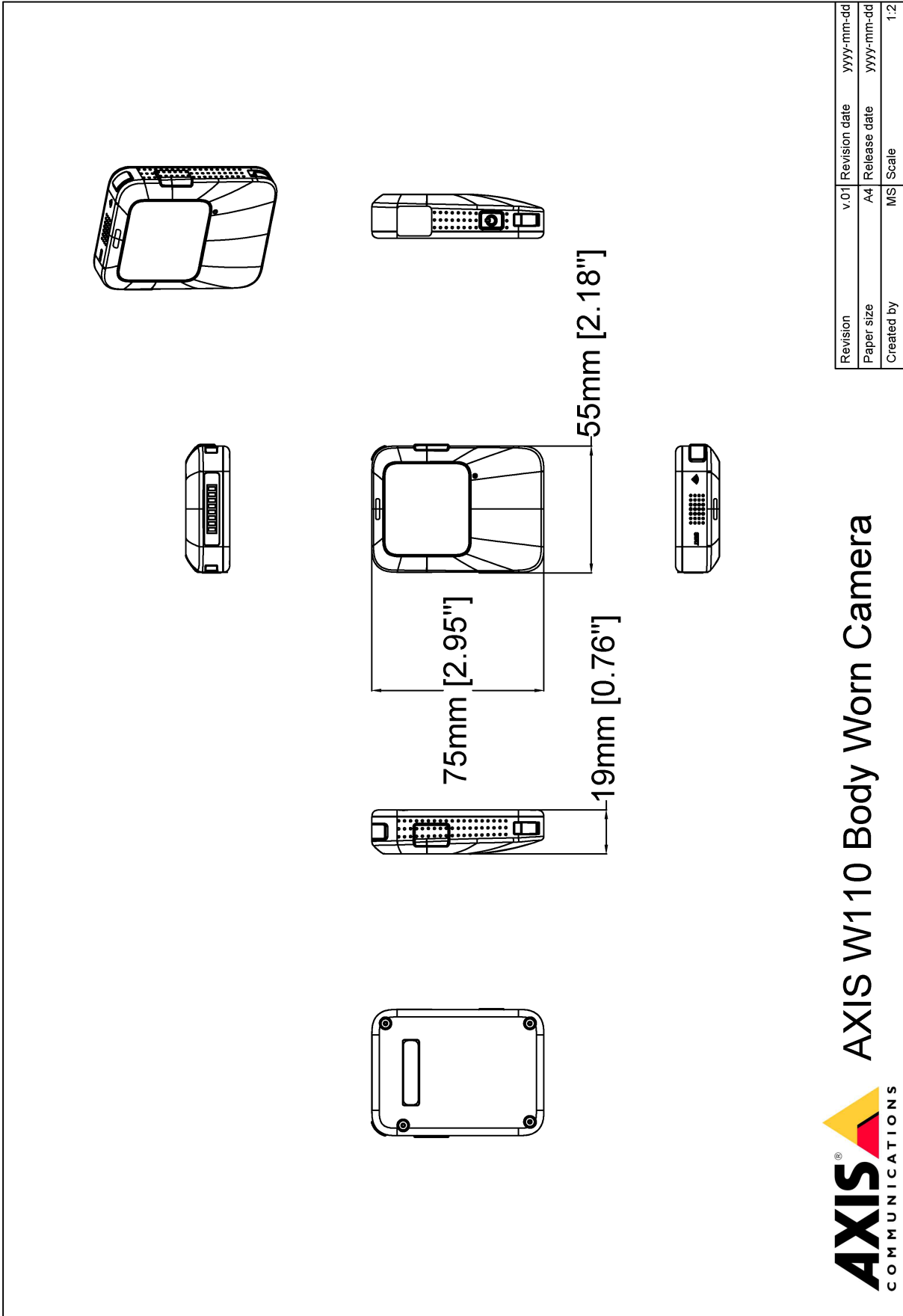
- > [Lightweight and compact](#)
- > [Excellent image quality with electronic image stabilization](#)
- > [Flexible mounting options](#)
- > [Voice feedback](#)
- > [Open standards for easy integration](#)



# AXIS W110 Body Worn Camera

<b>Camera</b>		<b>Recording</b>	Configurable audio and video pre-buffer 0, 15, 30, 60, 90, and 120 seconds
<b>Image sensor</b>	1/2.8" progressive scan RGB CMOS Sensitivity: 0.1 lux	<b>Sensor</b>	6-axis gyroscope, accelerometer
<b>Lens</b>	Focal length, 1.9 mm Horizontal field of view: 140° (1080p), 112° (720p) Vertical field of view: 91° (1080p), 62° (720p) Fixed iris, F2.2	<b>User interface</b>	Status indicators Audio, voice, and vibration feedback
<b>Shutter speed</b>	1/22000 s to 1/25 s with 50 Hz 1/22000 s to 1/30 s with 60 Hz	<b>Wireless interface</b>	Bluetooth® 5.1 Low Energy and Classic Wi-Fi® 5 a/b/g/n/ac @ 2.4 GHz, 5 GHz
<b>Video</b>		<b>Casing</b>	IP54-rated Plastic casing Drop tested up to 1.5 m
<b>Video compression</b>	H.264 (MPEG-4 Part 10/AVC) High Profile	<b>Color</b>	Black NCS S 9000-N Gray NCS S 2502-B
<b>Resolution</b>	1920x1080, 1280x720	<b>Connectors</b>	Pogo pin pads
<b>Frame rate</b>	25 fps at 50 Hz 30 fps at 60 Hz	<b>Operating conditions</b>	Temperature: -20 °C to 45 °C (-4 °F to 113 °F) Maximum temperature (intermittent, <1 hour): 50 °C (122 °F) Humidity: 10–100% RH (condensing)
<b>WDR</b>	WDR	<b>Charging conditions</b>	Temperature: 0 °C to 35 °C (32 °F to 95 °F) Charging time: <7.5 hours in 0–15 °C (32–59 °F) <4 hours in 15–30 °C (59–86 °F) <6.5 hours in 30–35 °C (86–95 °F) Humidity: 5–95% RH (non-condensing)
<b>Image settings</b>	Electronic image stabilization (720p), barrel distortion correction	<b>Storage conditions</b>	Temperature: < 1 month: -20 °C to 45 °C (-4 °F to 113 °F) < 3 months: -20 °C to 35 °C (-4 °F to 95 °F) > 3 months: 0 °C to 25 °C (32 °F to 77 °F) Optimal temperature: 25 °C (77 °F) Humidity: 5–95% RH (non-condensing)
<b>Video streaming</b>	Axis Zipstream for body worn	<b>Dimensions</b>	For the overall product dimensions, see the dimension drawing in this datasheet.
<b>Audio</b>		<b>Weight</b>	85 g (0.19 lb) 117 g (0.26 lb) with AXIS TW1106 Magnet Mount
<b>Audio encoding</b>	AAC-LC	<b>Included accessories</b>	AXIS TW1106 Magnet Mount
<b>Audio input/output</b>	Built-in microphone, built-in speaker	<b>Optional accessories</b>	AXIS TW1107 Magnet Mount Klick Fast™ System for Body worn camera mounts AXIS Body Worn Assistant app for Android, iOS For more accessories, see <a href="http://axis.com/bodyworn">axis.com/bodyworn</a>
<b>Functionality</b>	Voice enhancement	<b>Warranty</b>	The product, including the battery, is subject to a 3-year warranty period, in accordance with the terms and conditions stated in Axis 5 Year Limited Hardware Warranty available on <a href="http://axis.com/warranty">axis.com/warranty</a> ("3-year Warranty Period"). In addition to the terms and conditions in the Axis 5 Year Limited Hardware Warranty, the warranty doesn't cover battery degradation if the battery has undergone more than 500 charge cycles, if the camera has been used or stored in temperatures outside the specifications in the datasheet, or if the instructions in the product's user manual haven't been followed. Replacement of the battery during the 3-year Warranty Period carried out by any other party than Axis (or an RMA partner on behalf of Axis) will void the main item's warranty. Contact Axis Support or your reseller for battery- or service-related matters.
<b>Approvals</b>		<b>Sustainability</b>	
<b>Supply chain</b>	TAA compliant	<b>Substance control</b>	PVC free, BFR/CFR free in accordance with JEDEC/ECA Standard JS709 RoHS in accordance with EU RoHS Directive 2011/65/EU and EN 63000:2018 REACH in accordance with (EC) No 1907/2006. For SCIP UUID, see <a href="http://echa.europa.eu">echa.europa.eu</a>
<b>EMC</b>	EN 55032 Class B, EN 55035, EN 55035, EN 61000-6-1, EN 61000-6-2 Australia/New Zealand: RCM AS/NZS CISPR 32 Class B Canada: ICES-3(B)/NMB-3(B) Japan: VCCI Class B Korea: KS C 9835, KS C 9832 Class B USA: FCC Part 15 Subpart B Class B	<b>Environmental responsibility</b>	<a href="http://axis.com/environmental-responsibility">axis.com/environmental-responsibility</a> Axis Communications is a signatory of the UN Global Compact, read more at <a href="http://unglobalcompact.org">unglobalcompact.org</a>
<b>Safety</b>	CAN/CSA C22.2 No. 62368-1 ed. 3, IEC/EN/UL 62368-1 ed. 3, RCM AS/NZS 62368.1:2018, IS 13252	<b>Footnote</b>	
<b>Environment</b>	IEC 60068-2-1, IEC 60068-2-2, IEC 60068-2-14, IEC 60068-2-27, IEC 60068-2-78, IEC/EN 60529 IP67	a. This product includes software developed by the OpenSSL Project for use in the OpenSSL Toolkit. ( <a href="http://openssl.org">openssl.org</a> ), and cryptographic software written by Eric Young ( <a href="mailto:ey@cryptsoft.com">ey@cryptsoft.com</a> ).	
<b>Wireless</b>	EN 300328, EN 300440, EN 301893, EN 301489-1, EN 301489-17, FCC Part 15 Subpart C, RSS-247	b. With pre-buffer, and fewer than 500 charge cycles.	
<b>Cybersecurity</b>	ETSI EN 303 645	c. Without pre-buffer, and including 1 hour of recording per charge in 720p, and fewer than 500 charge cycles.	
<b>Cybersecurity</b>			
<b>Edge security</b>	Software: Signed OS, AES-XTS-Plain64 256bit encryption Hardware: Secure boot, Axis Edge Vault with Axis device ID, signed video, secure keystore (CC EAL4+ certified hardware protection of cryptographic operations and keys). CJIS compliant encrypted internal storage (AES256)		
<b>Network security</b>	IEEE 802.1X (EAP-TLS, PEAP-MSCHAPv2), IEEE 802.1AR, HTTPS/HSTS <sup>a</sup> , TLS v1.2/v1.3 <sup>a</sup>		
<b>Documentation</b>	Axis body worn cameras – system security white paper, available at <a href="http://axis.com/learning/white-papers">axis.com/learning/white-papers</a> Axis Vulnerability Management Policy Axis Security Development Model AXIS OS Software Bill of Material (SBOM) To download documents, go to <a href="http://axis.com/support/cybersecurity/resources">axis.com/support/cybersecurity/resources</a> To read more about Axis cybersecurity support, go to <a href="http://axis.com/cybersecurity">axis.com/cybersecurity</a>		
<b>General</b>			
<b>Battery</b>	Li-ion, 1600 mAh Up to 7 hours operating time in 720p <sup>b</sup> Up to 5.5 hours operating time in 1080p <sup>b</sup> Up to 11.5 hours in standby mode <sup>c</sup>		
<b>Storage</b>	128 GB non-volatile memory, up to 45 hours of recorded video AES256 encryption standard		
<b>Throughput</b>	Camera to system controller: 100 Mbit/s		

# Dimension drawing



Revision	v.01	Revision date	yyyy-mm-dd
Paper size	A4	Release date	yyyy-mm-dd
Created by	MS	Scale	1:2

© 2023 Axis Communications

**AXIS**<sup>®</sup> COMMUNICATIONS  
**AXIS W110 Body Worn Camera**

www.axis.com