



Atlas Digital BlueBridge

BB-88, BB-816, BB168, BB1616



BB-1616 Front



BB-1616 Back

Overview

The BlueBridge DSP platforms are powerful and flexible tools offering mission critical solutions to successfully satisfy your customers' application needs. Engineered to strict standards with the highest quality internal components, BlueBridge DSP solutions provide pure clean audio, Ethernet connectivity for cost effective TCP/IP control and open architecture with Drag and Drop programmability. Atlas Sound offers the widest range of open architecture DSP platform I/O configurations of any manufacturer in the industry using the same easy to program software, high quality THAT Corporation microphone preamps, and the same powerful 48KHz, 40 Bit Floating DSP Engine.

Features:

- 8X8, 8X16, 16X8, & 16X16 I/O Configurations
- Open Architecture Programmability
- High Quality THAT Corporation Mic Preamps
- Touch Panel Options Available
- TCP/IP Third Party Control Capability
- Four Logic Inputs & Outputs
- 48KHz, 40 Bit Floating DSP Engine
- Remote Control Using Optional Wall Plates
- Output Peak & Signal Indicator LED's
- Safety Listed to UL60005

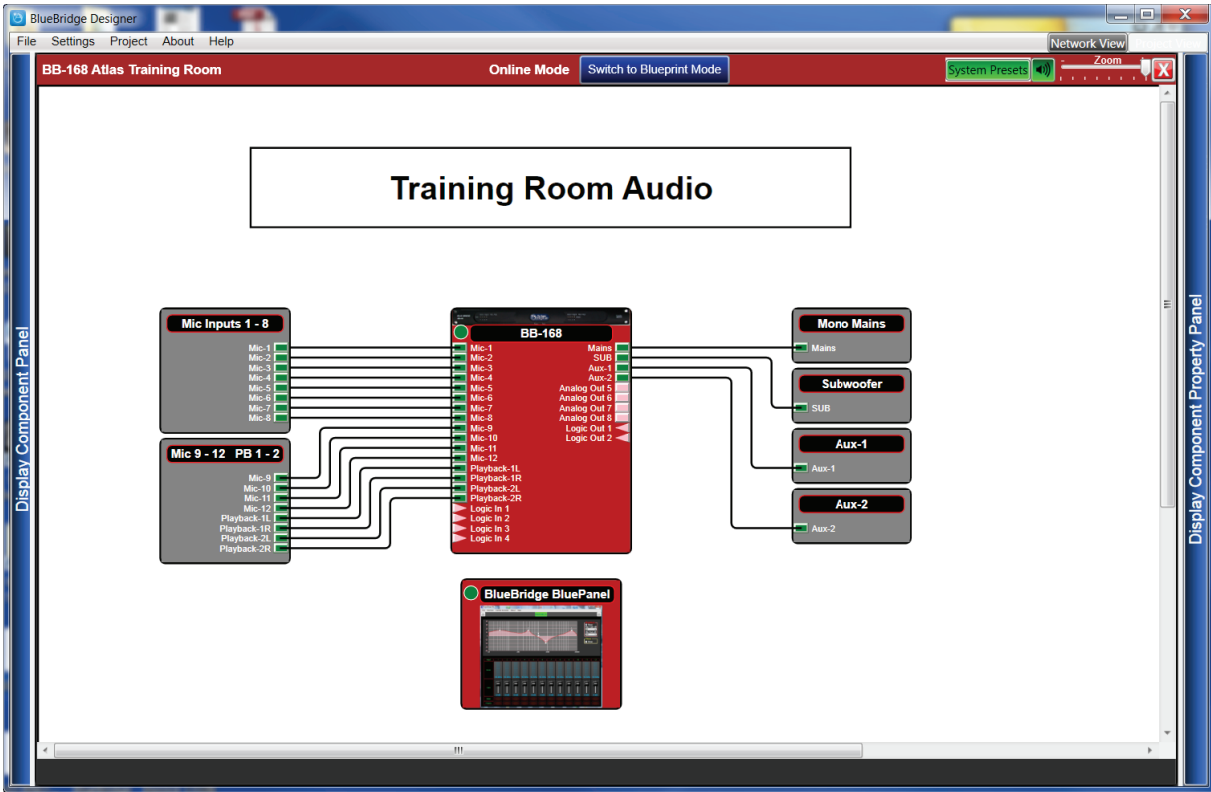
Product Description:

The Atlas Sound BB-88, BB-816, BB168, and BB1616 models are part of the new BlueBridge family of products. The open architecture drag and drop DSP models are offered in an 8x8, 8x16 16x8 and 16x16 I/O configurations with all inputs and outputs balanced. BlueBridge models utilize high quality THAT Corporation microphone preamps and 24 Bit converters to obtain an ultra-low noise floor and pure clean sound. BlueBridge models use a 40 Bit Floating Point DSP engine to prevent digital clipping that can occur in other DSP products and to provide the processing power for complex systems. BlueBridge DSP units can operate on an Ethernet network and the optional controls work on a PoE Network.

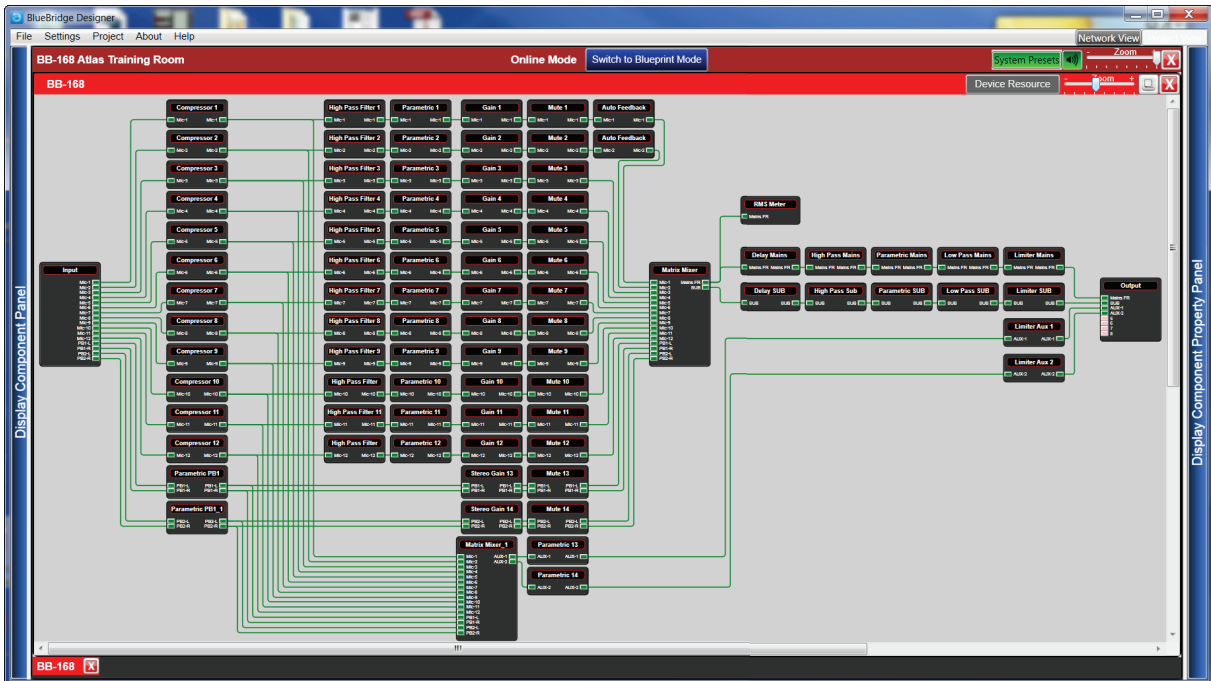
BlueBridge software provided with each system is an intuitive program used to configure audio processing and control capabilities within the device. BlueBridge DSP platforms offer all of the processing tools necessary for complex systems including; EQ's, anti-feedback EQ's, crossovers, delays, gain-sharing and gating auto-mixers, matrix mixers, standard mixers, filters, meters, generators, compressors, expanders, limiters, duckers, and an assortment of logic components to expand system control capabilities. BluePanel controls can be created in the BlueBridge software to create control pages for easy system operation by users of varying levels of system familiarity and knowledge. Blue Panel software can be installed on Windows computers for wireless remote control without consuming large amounts of storage space or slowing down a system.

The BlueBridge DSP platforms are cost effective solutions for the most demanding applications including house of worship, presentation rooms, conference rooms, background & foreground music, courtrooms, zoned paging and many other sound reinforcement and AV applications.

©2013 Atlas Sound L.P. All rights reserved. Atlas Sound and Strategy Series are trademarks of Atlas Sound L.P. All other trademarks are the property of their respective owners. ATSO04617 RevA 4/13

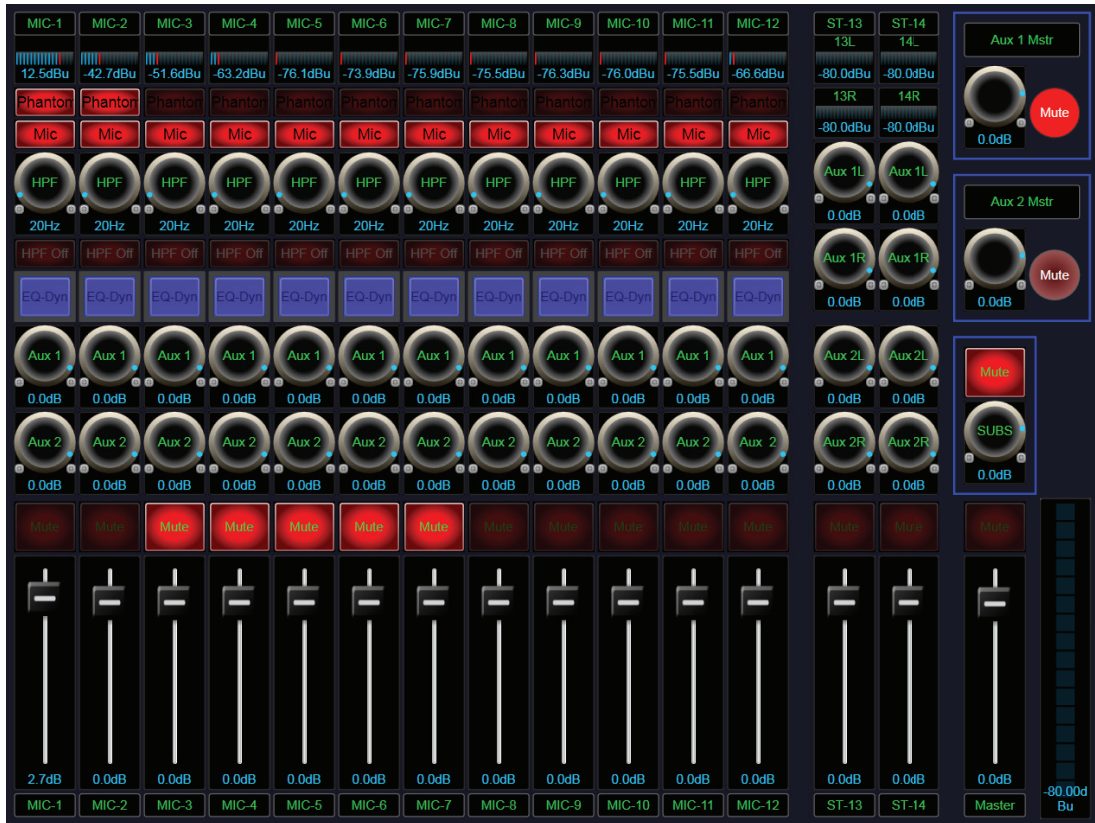


BlueBridge Software Offers the Capability of Displaying Components Connected to Inputs and Outputs



BlueBridge Open Architecture Software Provides Flexibility to Customize For Any Application

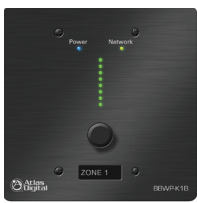
©2013 Atlas Sound L.P. All rights reserved. Atlas Sound and Strategy Series are trademarks of Atlas Sound L.P. All other trademarks are the property of their respective owners. AT5004617 RevA 4/13



BluePanel Controls Can Include Level Slider Controls or Additional Sends, Filters, and Meters

WALL CONTROL OPTIONS:

BlueBridge TouchPanel and Wall Controls are a natural extension of the Blue Bridge DSP platforms and provide a simple and cost effective way to ensure a sophisticated system is user friendly. The wall controls are available in five configurations and can be configured to fit the unique needs of a particular application. The BBWP-TOUCH7B, like the wall controls, makes a complex system easy for the user to operate. The BBWP-TOUCH offers greater flexibility by providing a way for the controls to be customized to meet the exact needs for an application. Even better, the process of creating the graphic interface for BBWP-TOUCH7B is fast, easy and intuitive.



BBWP-K1B



BBWP-K4B



BBWP-S4B



BBWP-S4K1B



BBWP-S8B



BBWP-TOUCH7B

Specification

BB-88, BB-816, BB168, BB1616

Input Type

Quantity	8 or 16
Type	Mic or Line, GUI Selectable
Configuration	Electronically balanced
Gain	-40 to +15dB in 0.25 dB steps
Polarity	+/- GUI Selectable
Connection	PHX Style, 3 Position, 3.5mm spacing
Input Impedance	>10k Ω
Maximum Input Level	+20dBu
Phantom Power	48V, GUI enabled

Output Type

Quantity	8 or 16
Type	Line
Configuration	Electronically Balanced
Polarity	+/- GUI Selectable
Gain	-40 to +15dB in 0.25 dB steps
Connection	PHX Style, 3 Position, 3.5mm spacing
Output Impedance	50 Ω
Maximum Output Level	+20dBu
Self-Configuring Dante Digital Ethernet	

Digital Audio Performance

Processor	40-bit Floating Point
Sampling Rate	48kHz
Analog Converters	High Performance 24-bit
Propagation Delay	3ms

General Audio Performance

Frequency Response	+/- 0.1dB (20 to 20kHz)
Dynamic Range	110dB type (unweighted)
CMMR	> 100dB (50 to 10kHz)
Crosstalk	< -100dB
Distortion	0.002% (1kHz @+4dBu)

Network Control

Ethernet	Network Control TCP/IP
IP Master Reset	Push Switch with Security Cover

Logic Control

Input	L1, L2, L3, L4, GND, GND, 6 Position PHX Style 3.5mm
Output	NC 1, COM 1, NO 1, NC 2, COM 2, NO 2, 6 Position PHX Style 3.5mm

DSP modules

EQ	Parametric, Graphic, Anti Feedback
Crossover	Butterworth, Linkwitz Riley, Bessel, Slopes: 6 to 48dB per Octave
Filters	High Shelf, Low Shelf, All Pass,
Delay	10mS - 2 Second
Mixers	Gain Sharing Auto-mixer, Gating Auto-mixer, Matrix Mixer, Standard Mixer, LR Mixer, LCR Mixer
Generators	Sine Tone, Sign Sweep, White, Pink
Meters:	RMS
Dynamics	Compressor, Expander, Limiter, Ducker
Logic	AND, OR, NOT, NAND, NOR, FlipFlop, Multiplexor, Encoder, Decoder

System Parameters

Preset Programs	70
Delay Units	ms, ft, m
Security locks	Password

Front Panel Features

LED's Input & Output	One per channel, multi-color type
Signal LED	Green
Peak LED	Red, -3db before Clip

Status LED

Data	Yellow
Power	Blue

Rear Panel Connectors:

Analog Inputs	Qty. 16, 3 Position Phoenix Plug-in 3.5mm
Analog Outputs	Qty. 8, 3 Position Phoenix Plug-in 3.5mm
Logic Ports	Qty. 2, 6 Position Phoenix Plug-in 3.5mm
Ethernet Port	RJ-45
Dante Port:	Dual RJ-45
AC Mains Power	Standard IEC Socket

General

Rack Space	1RU, 19"
Power	90-240VAC (50-60Hz), Internal Power Supply
Dimensions	19"x1.75"x9" (483x44x229 mm)
Weight	7.2 lbs / 3.25 kg (BB-1616)
Safety	Safety Listed to UL60005
Power Consumption	18.5W
Thermal Dissipation	63 BTU