

Advantage Deluxe Electrol

Designed to eliminate the extra step of finishing the screen with trim, the Advantage line of projection screens is designed with ceiling trim already in place. Once the screen is installed, the screen's trim conceals the rough opening eliminating the need to complete additional trim work.

Sliding installation brackets make it easy to attach the screen housing to the structure above the drop ceiling.

All Deluxe screens feature a closure door that hides the open space and screen in the ceiling, providing a cleaner aesthetic.

The Advantage® Deluxe Electrol® screen features simple in ceiling installation that can be done in two stages. The screen case can be installed during the rough-in construction stage and the fabric assembly can be completed during the finishing stage.

The Advantage Deluxe Electrol does not include the Tensioning Cable System. See the Tensioned Advantage Electrol Deluxe to ensure an even lateral tension.

Features

- Standard Low Voltage Control (LVC) to keep your screen operation flexible
- UL Plenum rated case
- White powder-coated closure doors and case for a clean aesthetic
- Available with SCB-100 and SCB-200 (RS-232 serial control board) or Video Projector Interface (screen trigger) built into the case
- Decora-style, three-button wall switch
- Standard black backing retains projected brightness
- Seamless surfaces in all models

Optional Accessories:

- Radio Frequency Wireless Remote
- Infrared Wireless Remote
- Locking Switch Cover Plate
- Red Laser Pointers
- Green Laser Pointers
- RF PowerPoint Remote with Green Laser Pointer



16:9 HDTV Format

Viewing Area (H x W)		Nominal Diagonal		Overall Case Length	
in.	cm	in.	cm	in.	cm
45" x 80"	114 x 203	92"	234	96¼"	244
52" x 92"	132 x 234	106"	269	108¾"	275
54" x 96"	137 x 244	110"	279	112¼"	285
58" x 104"	147 x 264	119"	302	120¼"	305
65" x 116"	165 x 295	133"	338	132¼"	336
78" x 139"	198 x 353	159"	404	156¼"	397
90" x 160"	229 x 406	184"	467	176¼"	448

16:10 Wide Format

Viewing Area (H x W)		Nominal Diagonal		Overall Case Length	
in.	cm	in.	cm	in.	cm
50" x 80"	127 x 203	94"	239	96¼"	244
57½" x 92"	146 x 234	109"	277	108¾"	275
60" x 96"	152 x 244	113"	287	112¼"	285
65" x 104"	165 x 264	123"	312	120¼"	305
69" x 110"	175 x 279	130"	330	126¼"	321
72½" x 116"	184 x 295	137"	348	132¼"	336
87" x 139"	221 x 353	164"	417	156¼"	397

4:3 Video Format

Viewing Area (H x W)		Nominal Diagonal		Overall Case Length	
in.	cm	in.	cm	in.	cm
43" x 57"	109 x 145	72"	183	72¼"	184
50" x 67"	127 x 170	84"	213	82¼"	209
60" x 80"	152 x 203	100"	254	96¼"	244
69" x 92"	175 x 234	120"	305	108¾"	275
87" x 116"	221 x 295	150"	381	132¼"	336
105" x 140"	267 x 356	180"	457	156¼"	397
120" x 160"	305 x 406	200"	508	176¼"	448

Available with the Following Screen Surfaces



Matte White

Half Angle: 60° Gain: 1.0



High Contrast Matte White

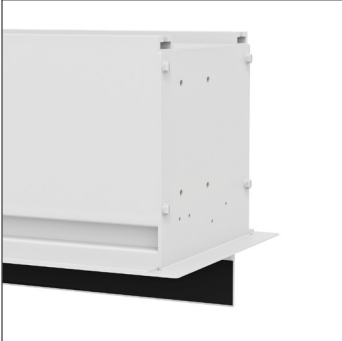
Half Angle: 50° Gain: 1.1



Video Spectra 1.5

Half Angle: 35° Gain: 1.5

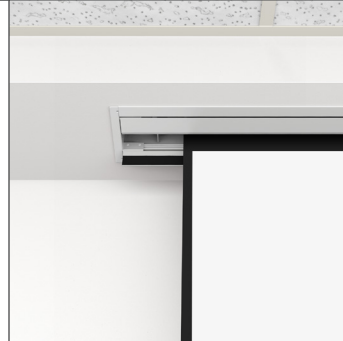
Product images



Case Profile



In Ceiling (Closed)



In Ceiling (Open)



A BRAND OF MILESTONE AV TECHNOLOGIES | www.milestone.com

P 800.622.3737 / 574.267.8101 **F** 877.325.4832 / 574.267.7804

E info@da-lite.com

In British Columbia, Milestone AV Technologies ULC carries on business as MAVT Milestone AV Technologies ULC.

©2017 Milestone AV Technologies. DL-0417 (Rev. 1) 01.17.

Da-Lite is a registered trademarks of Milestone AV Technologies. All other brand names or marks are used for identification purposes and are trademarks of their respective owners. All patents are protected under existing designations. Other patents pending.