






RCI Electromagnetic Locks



8360 Mortise MiniMag®

For sliding doors.
 9"W x 1-1/2"H x 1-1/6"D (229mm x 38mm x 27mm) –
 Includes 3/4" (19mm) mounting tabs
 Armature Plate: 7-1/4"W x 1-1/2"H x 1/2"D
 (185mm x 38mm x 13mm)

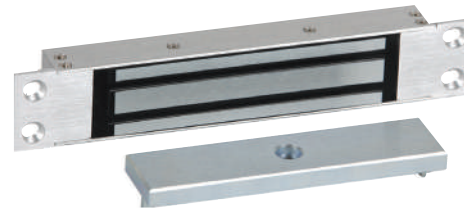
	Energy 500mA ¹ Field-Selectable 12/24VDC		Strength Up to 750lbf Holding Force
	Warranty Lifetime Limited Warranty		Mode Fail-Safe
	Monitoring Built-In Remote Lock Status Sensor		

¹Max at 12VDC

- Low-profile design ideal for sliding doors
- Brushed Anodized Aluminum (28) finish





How To Order

8360 x 28



8365 Mortise MicroMag®

For small enclosures.
 7-15/16"W x 1-11/32"H x 13/16"D (202mm x 34mm x 21mm) – In-
 cludes 11/16" (17.5mm) mounting tabs
 Armature Plate: 5-1/8"W x 1-1/4"H x 21/64"D
 (130mm x 32mm x 8.5mm)

	Energy 400mA ¹ Field-Selectable 12/24VDC		Strength Up to 300lbf Holding Force
	Warranty Lifetime Limited Warranty		Mode Fail-Safe

¹Max at 12VDC

- Low-profile design ideal for sliding doors, cabinets and small enclosures
- Brushed Anodized Aluminum (28) finish

How To Order

8365 x 28