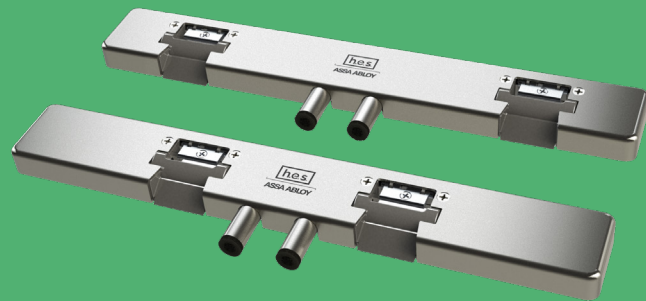


# 9200 Surface Mounted Electric Strike

*Works with tubular, vertical rod exit devices on double doors*



The low-profile, retro-mounted solution for glass openings.

The innovative 9200 electric strike sets a new industry standard for glass openings with tubular, vertical rod exit devices. The 9200 offers simplified retro-mounted installation within the existing mechanical prep to provide fast and easy installation. Integrated adjustability provides optimal latch positioning to accommodate demanding installations and the low-profile design eliminates the need to add to or modify the frame. With adaptable voltage sensing technology, no wiring selection is required, allowing the product to function in ranges from 12 through 24 volts. Additionally, field selectable fail safe/fail secure functionality and monitoring options provide maximized versatility.

The 9200 exceeds Grade 1 standards and is designed with the strength and durability to meet UL outdoor rating requirements.

## Features

### Standard Features

- Retro-mount using existing header prep
- No cutting required
- Non-handed
- Integrated adjustability
- Adaptable voltage sensing technology (12-24 VDC)
- Factory configured or field installable monitoring
- Static strength 1,500 lbs
- Dynamic strength to 70 ft-lbs
- Endurance 1 million cycles
- Field selectable fail secure/fail safe
- Quiet operation
- Stainless steel construction
- SecuriCare five-year, no-fault, no questions asked warranty

### Optional Features

- **W** Wide or **N** Narrow backset options
- **LM** Latchbolt monitor
- **LMS** Latchbolt strike monitor
- Available in 7 finishes

### Accessories

- **OPT-9DLM** Double Monitoring Kit
- **RK-ESK2** Retrofit Kit for Double Doors
- **UHB** Securitron Universal Header Bracket
- **HEB** Securitron Header Extension Bracket



Grade 1

SecuriCare  
WarrantyTubular  
Exit DeviceField Selectable  
(Fail secure  
/Fail safe)Dual Voltage  
12/24PoE  
FriendlyOutdoor  
RatedBurglary  
Rated

ASSA ABLOY

## Specifications

### Certifications

- ANSI/BHMA A156.31 Grade 1
- UL 1034 Burglary-Resistant Listed; Suitable for Outdoor Use
- UL 294 Listed
- UL 305 Listed
- RoHS compliant

### Frame Application

- Aluminum
- Hollow Metal
- Wood (additional mounting hardware required)

### Electrical (DC Continuous Duty)

- Operating Voltage (12-24 VDC/VAC)
- 480 mA at 12 VDC, 240 mA at 24 VDC

## Compatible Latches



Roller Latch

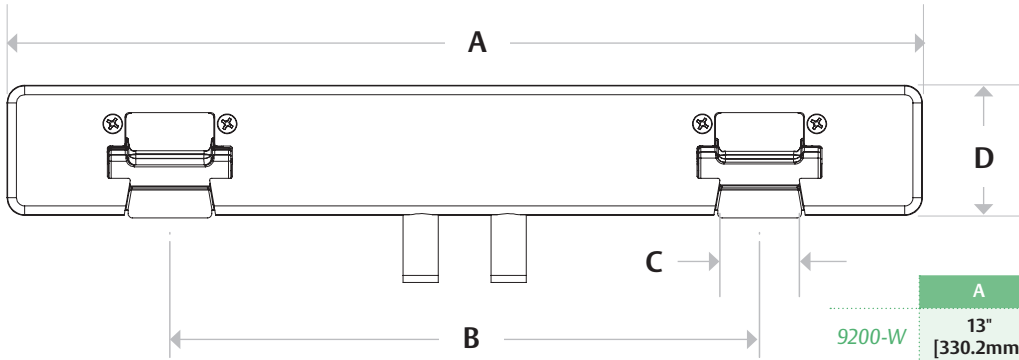
- CRL PA Series
- FHC HP Series
- PRL PL Series
- dormakaba GP Series



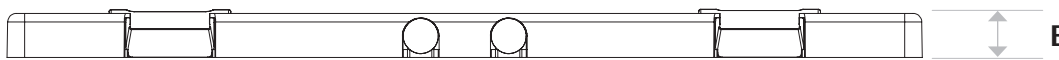
Security Latch

- Rockwood PDU Series

## Dimensions



	A	B	C	D	E
9200-W	13" [330.2mm]	8-3/8" [212.7 mm]	1-1/8" [28.6mm]	1-7/8" [46.9mm]	5/8" [15.9mm]
9200-N	13" [330.2mm]	4-5/8" [117.5mm]	1-1/8" [28.6mm]	1-7/8" [46.9mm]	5/8" [15.9mm]



## How to Order

SERIES	KEEPER SPACING	FINISH	OPTION (S)
<b>9200</b>	<b>W</b>	<b>- 630</b>	
9200 Electric Strike for tubular, vertical rod exit devices for double doors	N 4-5/8"*	605 Bright Brass	(blank) No Monitoring
	W 8-3/8"*	606 Satin Brass	LM Latchbolt Monitoring
		612 Satin Bronze	LMS Latchbolt and Strike Monitoring
		613E Dark Oxidized Satin Bronze Powder	
		629 Bright Stainless Steel	
		630 Satin Stainless Steel	
		BSP Black Suede Powder	

\*Keeper distance centerline to centerline

NOTE: Electric strike compatibility is determined at time of electric strike product release. ASSA ABLOY is not responsible for incompatibility of products that have changed in design or craftsmanship by their respective manufacturers. When compatibility is a concern, contact Customer Support for application assistance.