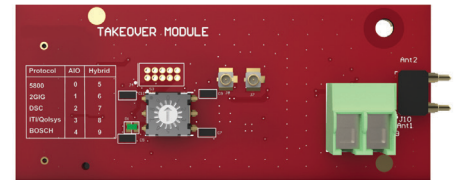




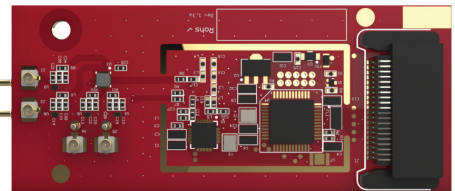
ProSeries Wireless Takeover Module

PROTAKEOVER

The Wireless Takeover Module is a single, simple plug-in solution that enables ProSeries panels to communicate with multiple wireless security sensor protocols. The module can be added with a fast and easy installation on all ProSeries control panels.



(front/top view)



(back/bottom view)

FEATURES AND BENEFITS

- Easy plug-in installation and enrollment
- Protocols supported include 5800 Series, 2GIG, DSC (North America), ITI and BOSCH
- Diversity antennas for increased coverage located in the All-in-One panel back plate
- UL 1023 compliant
- Power supply regulation on board – module is powered from the panel and is supported by the back-up battery should AC loss occur
- Protocol selection is based on a single rotary switch

TECHNICAL SPECIFICATIONS

COMPATIBILITY:

All ProSeries control panels

FREQUENCY:

319 MHz, 345 MHz and 433 MHz

POWER REQUIREMENTS/BATTERY:

5VDC

BATTERY BACKUP:

Yes (panel)

OPERATING TEMPERATURE:

32° to 122° F/0° to 50° C (Agency Compliance 32° to 120° F/0° to 49° C)

OPERATING HUMIDITY:

95% max. (Agency Compliance 93% max.) non-condensing

DIMENSIONS:

2.8" (71mm) L x 1.2" (30mm) W

APPROVALS:

FCC/IC

ETL US Listed to UL 1023 and UL 1610

cETL Listed to ULC C1023

AUTHORIZED COUNTRIES:

US, Canada, Latin America

ProSeries Wireless Takeover Module

ORDERING

PROTAKEOVER

Wireless Takeover Module

For more information

www.resideo.com



Resideo Technologies, Inc.

2 Corporate Center Drive, Suite 100

P.O. Box 9040

Melville, NY 11747

1-800-645-7492

resideo.com

L/PSTCVTD/D | 06/20

© 2020 Resideo Technologies, Inc.

All rights reserved. This product

is manufactured by Resideo

Technologies, Inc. and its affiliates.