

**PICK UP  
THE PACE  
WITH  
TEMPO**



TEMPO<sup>®</sup> FLAT PANEL  
WALL MOUNT SYSTEM

# TEMPO® FLAT PANEL WALL MOUNT SYSTEM

---

This all-in-one configurable wall mounting system is designed to improve efficiency by streamlining installation workflow. AV professionals can increase productivity and add money to the bottom line with this new system, especially for mass rollouts.

Install on any wall and neatly store AV devices with simple, unparalleled service access. Install up to six small devices behind the display on integrated Lever Lock™ storage panels. Tempo Wall Mount System is thoughtfully designed with feedback from installers for faster deployments.

## Accelerate AV Installations

- One part number, one box, one order!
- Ship to site pre-loaded with small devices and cabling.

## Save Money

- Reduce onsite installation personnel and time.
- Minimize last-minute shipping costs of missing parts.

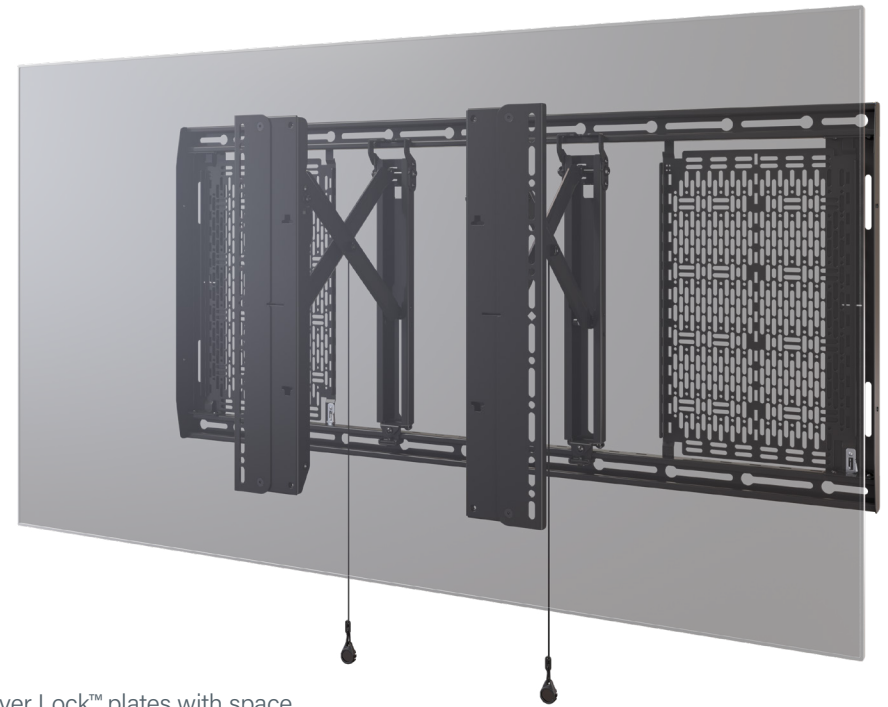
## Feature Flexibility

- Wall plate and sliding interface design facilitates centering display in the right position.
- 10° of adjustable display tilt in 2.5° increments.

## Streamlined for Success

- Total installation depth facilitates ADA compliance\*
- Up to 1" (25 mm) post-install leveling adjustment.

\*When display depth is less than 2" (51 mm)



## Integrated Storage

- Ships with two 15"x10" Lever Lock™ plates with space to add more.
- Storage plates can be moved along the mounting rail for best placement of components.

## Simplify Service

- Approximately 13" (330 mm) of service access.
- Open wall plate for easy positioning of power and data sources and in-wall storage.

# TEMPO<sup>®</sup> SPECIFICATIONS

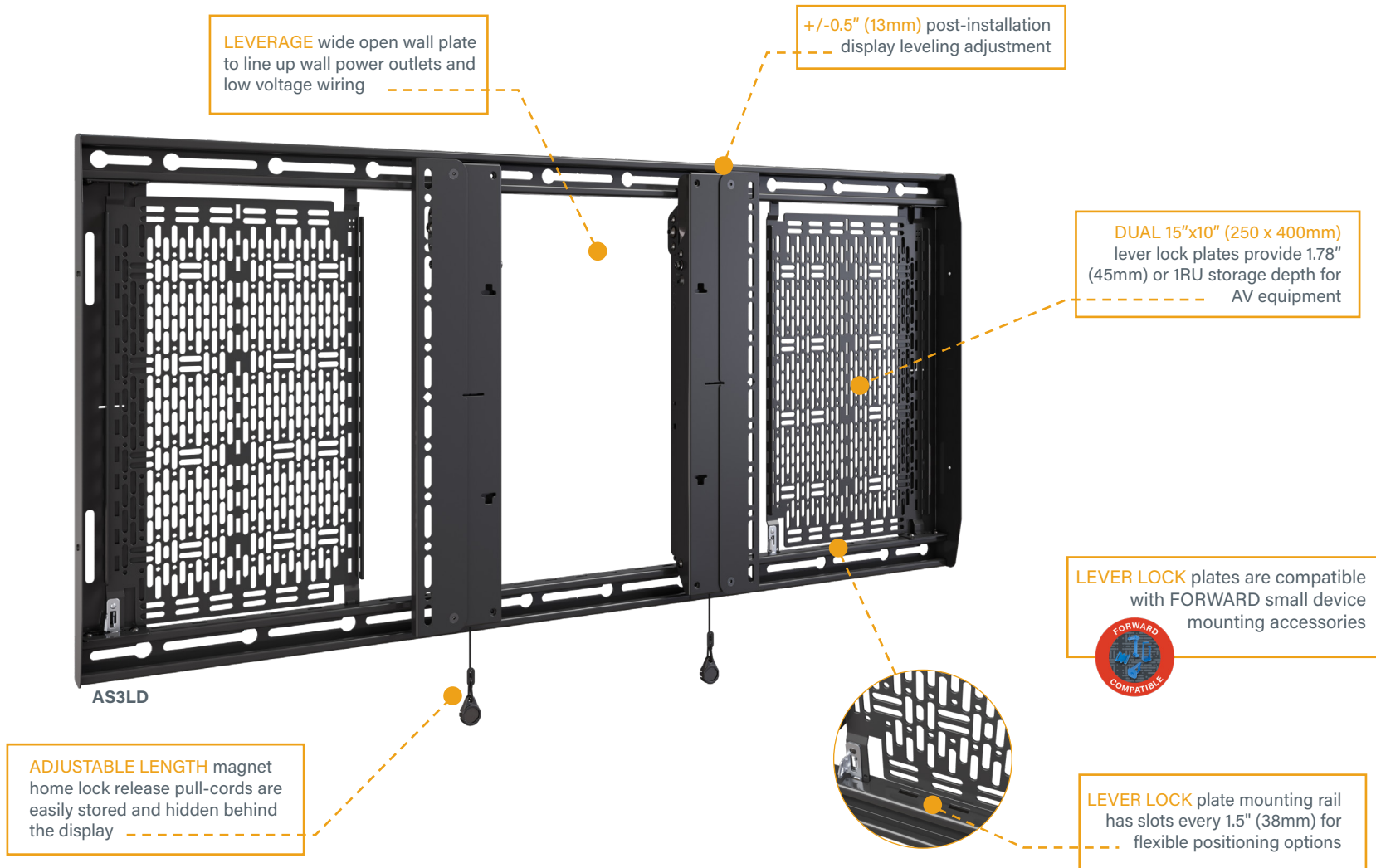


Part Number	AS3LD	AS3LDP7
<b>Name</b>	Tempo™ Flat Panel Wall Mount System	Tempo™ Flat Panel Wall Mount System with PDU
<b>Power Distribution Unit</b>	None	Includes (1) PD-715SC-NS
<b>Typical Display Size</b>	49"-86"	
<b>Display Weight Capacity</b>	200 lbs (90.7 kg)	
<b>Display Mounting Pattern</b>	Up to 970 x 450 mm	
<b>Dimensions (W x H x D)</b>	42.03" x 19.75" x 1.96" (1068 x 502 x 50 mm)	
<b>Wall Substrates</b>	Steel stud, wood stud, concrete, and block walls	
<b>Post-Install Leveling</b>	1" (25 mm)	
<b>Lateral Shift</b>	Yes	
<b>Tilt</b>	-10°/+0°, 2.5° increments	
<b>Plumb Adjust</b>	0.38" (10 mm)	
<b>Storage Dimensions (W x H)</b>	Includes (2) 10" x 15" (250 x 402 mm) Lever Lock plates	
<b>Storage Weight Capacity</b>	20 lbs (9 kg) per Lever Lock plate	
<b>Service Extension</b>	10.65" (271 mm)	
<b>Service Depth</b>	12.61" (320 mm)	
<b>Color</b>	Black	
<b>Certifications</b>	UL	PD-715SC-NS: ETL

# TEMPO® FLAT PANEL WALL MOUNT SYSTEM

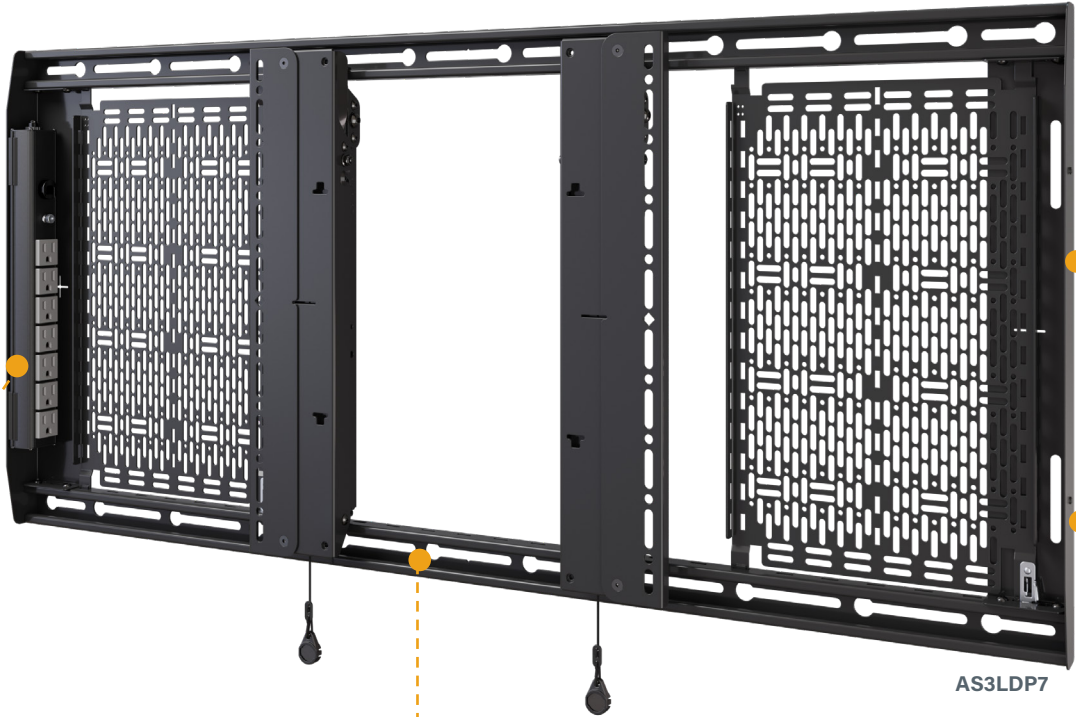
**PURPOSEFULLY DESIGNED** with 42" x 19.75" (1068 x 502mm) footprint - hides behind typical 49" displays and larger

\* **UL LISTED** and **TUV CERTIFIED (pending)**  
Safety tested for installation on metal or wood studs, concrete or block wall substrates



# TEMPO® FLAT PANEL WALL MOUNT SYSTEM WITH PDU

\* **SLIM** 15A 7-outlet PDU (PD-7155C-N5) ships with AS3LDP7 to power full AV system

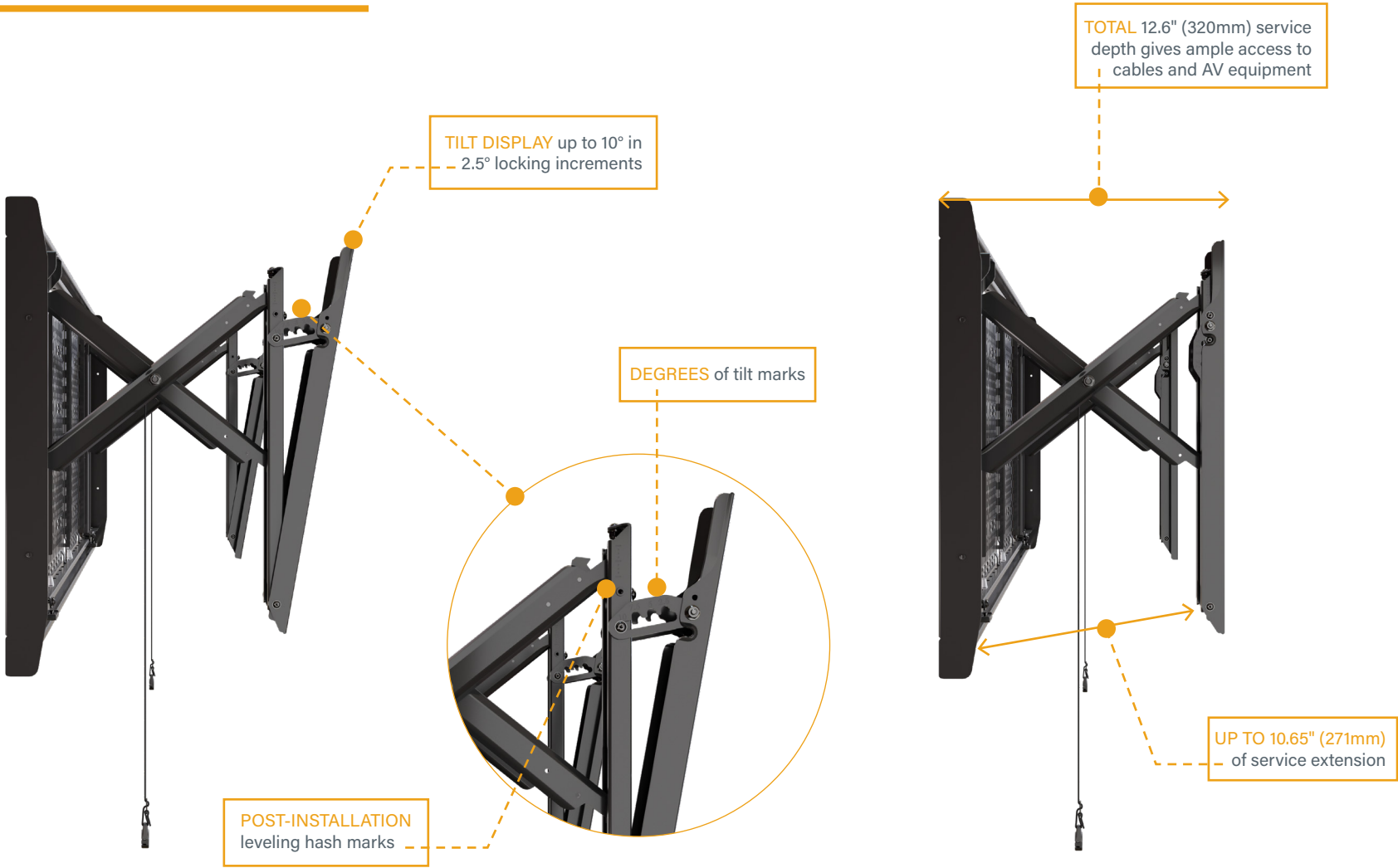


**SLIM PROFILE** of only 1.96" (50mm) Facilitates ADA compliance with displays less than 2" (51mm)

**#10-32** tapped holes for PDU mounting clips

**LATERAL SHIFT** key-hole slots for continuous mounting positions

# TEMPO® PULL-OUT EXTENSION AND TILT



# ACCESSORIES



**CAMERA SHELF<sup>1</sup>**  
AS3A100

- Cable Management Pass-Through Window
- 15 lbs (6.8 kg) Weight Capacity
- Vaddio® IntelliSHOT & ConferenceSHOT ePTZ Camera Bracket included



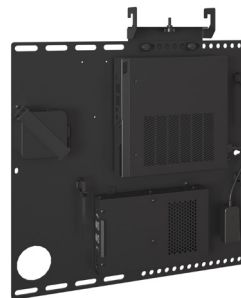
**VIDEO SOUND BAR<sup>2</sup>**  
AS3A101

- 20 lbs (9 kg) Weight Capacity when using interface bracket, 15 lbs (6.8 kg) when using "L" brackets
- Fits most video-sound bars with mounting holes in the back or bottom



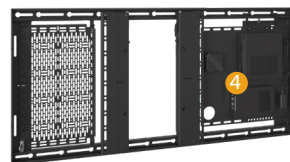
**60mm INTERFACE EXTENDER<sup>3</sup>**  
FHB5174

- Increase vertical mounting from 450mm up to 650mm
- Interface brackets screw onto Tempo Wall Mount System without adding depth

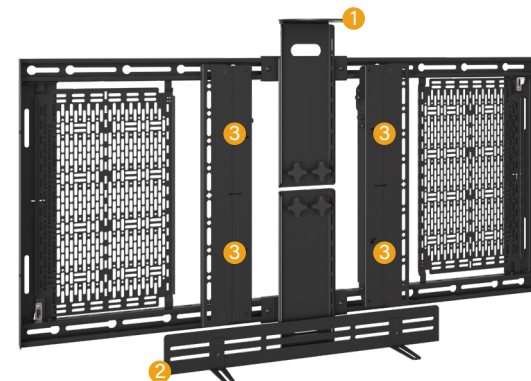


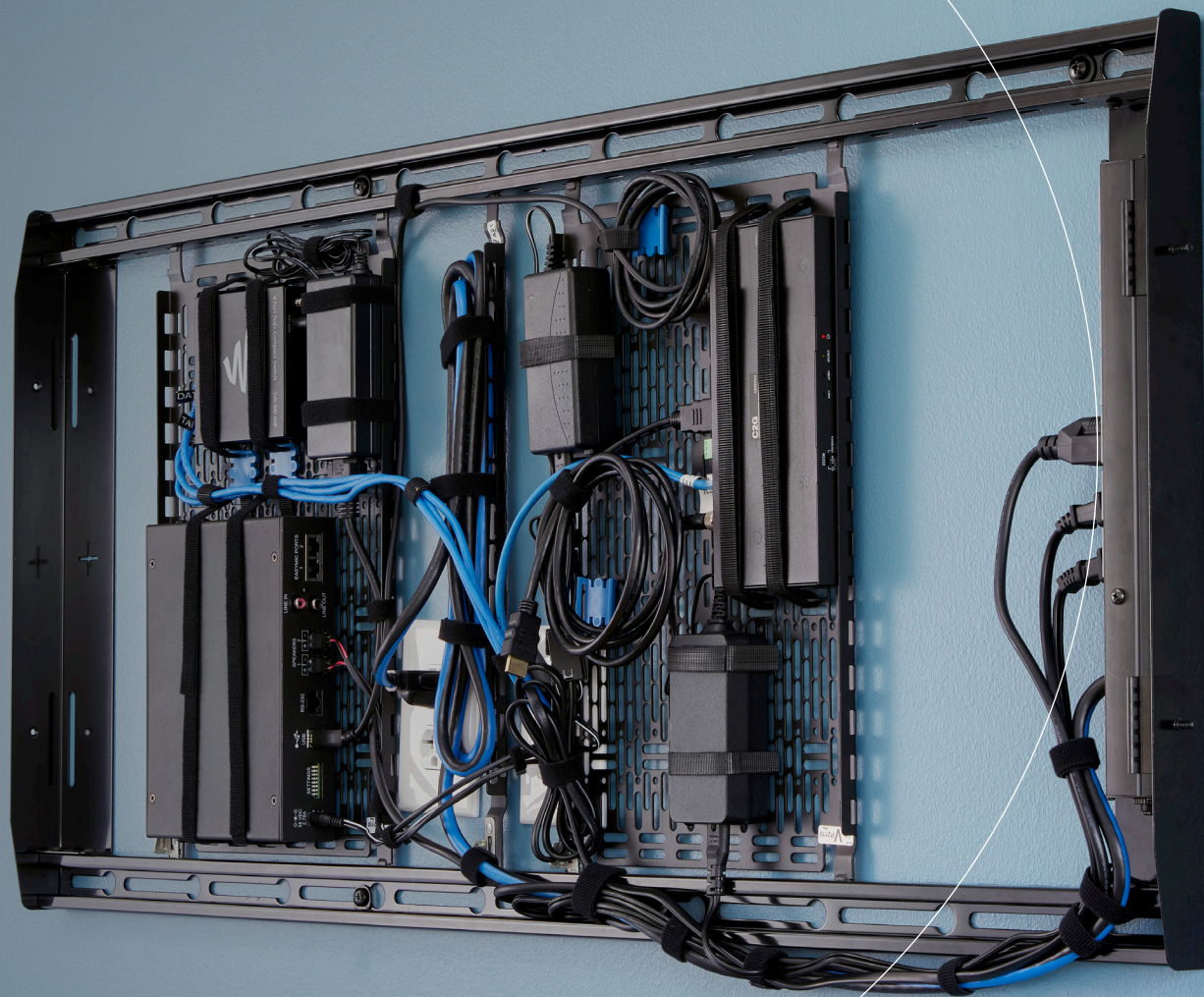
**CRESTRON® UC BRACKET ACCESSORY<sup>4</sup>**  
AS3A102

- Toolless thumb screws
- Lateral shift offers precision placement of the Crestron UC Bracket assembly behind display
- Crestron Flex Kit replaces Lever Lock plate storage area



Camera Shelf and Sound Bar Mount can be mounted above or below display.





LEGRAND | AV COMMERCIAL BRANDS

C2G | Chief | Da-Lite | Luxul | Middle Atlantic | Vaddio | Wiremold

INSTALLER INSPIRED | [legrandav.com](http://legrandav.com)

USA 866.977.3901 [av.chief.support@legrand.com](mailto:av.chief.support@legrand.com) CANADA 877.345.4329 [av.chief.canada@legrand.com](mailto:av.chief.canada@legrand.com)

EMEA +31 495 580 840 [av.emea.sales@legrand.com](mailto:av.emea.sales@legrand.com) APAC +852 2145 4099 [av.asia.sales@legrand.com](mailto:av.asia.sales@legrand.com)

©2023 Legrand AV Inc. 230231 Rev B 9/23 Chief is a registered trademark of Legrand AV Inc. All other brand names or marks are used for identification purposes and are trademarks of their respective owners. All patents are protected under existing designations. Other patents pending.