

# Large Cosmopolitan Electrol

For large venue installs, the Cosmopolitan® Electrol® is a ceiling or wall mounted electric screen. A variety of finishes and veneer options are available.

## Features

- Two-piece aluminum case with mounting brackets for wall or ceiling mount installation
- Seamless 16' X 16' screen
- Ceiling and wall mounting brackets
- Decora-style, three-position wall switch
- Standard black backing retains projected brightness
- Seamless surfaces
- Optional low-voltage control
- Standard white powder-coated aluminum finish available in black or veneer upon request

## Optional Accessories:

- Infrared Wireless Remote Single Motor LVC
- SCB-100
- Video Projector Interface
- Key Operated, 110 Volt Switch
- Locking Switch Cover Plate
- Dual Motor Low Voltage Control System
- Radio Frequency Wireless Remote - Dual Motor LVC
- Infrared Wireless Remote Dual Motor LVC
- Red Laser Pointers
- Green Laser Pointers
- RF PowerPoint Remote with Green Laser Pointer



## 16:9 HDTV Format

| Viewing Area (H x W) |           | Nominal Diagonal |     | Overall Case Length |     |
|----------------------|-----------|------------------|-----|---------------------|-----|
| in.                  | cm        | in.              | cm  | in.                 | cm  |
| 92" x 164"           | 234 x 417 | 188"             | 478 | 177½"               | 451 |
| 106" x 188"          | 269 x 478 | 216"             | 549 | 201½"               | 512 |

## 16:10 Wide Format

| Viewing Area (H x W) |           | Nominal Diagonal |     | Overall Case Length |     |
|----------------------|-----------|------------------|-----|---------------------|-----|
| in.                  | cm        | in.              | cm  | in.                 | cm  |
| 100" x 160"          | 254 x 406 | 189"             | 480 | 173½"               | 441 |
| 110" x 176"          | 279 x 447 | 208"             | 528 | 189½"               | 481 |
| 117½" x 188"         | 283 x 478 | 222"             | 564 | 201½"               | 512 |

## 4:3 Video Format

| Viewing Area (H x W) |           | Nominal Diagonal |     | Overall Case Length |     |
|----------------------|-----------|------------------|-----|---------------------|-----|
| in.                  | cm        | in.              | cm  | in.                 | cm  |
| 120" x 160"          | 305 x 406 | 200"             | 508 | 173½"               | 441 |
| 123" x 164"          | 312 x 417 | 210"             | 533 | 177½"               | 451 |
| 141" x 188"          | 358 x 478 | 240"             | 610 | 201½"               | 512 |

Available with the Following Screen Surfaces



**Matte White**

Half Angle: 60° Gain: 1.0



**High Contrast Matte White**

Half Angle: 50° Gain: 1.1

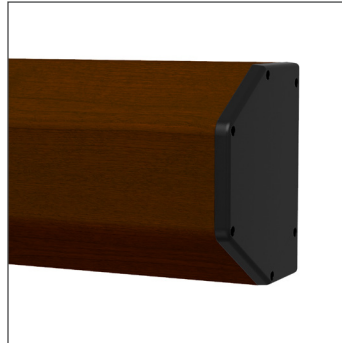
Product images



White Case (Standard)



Black Case

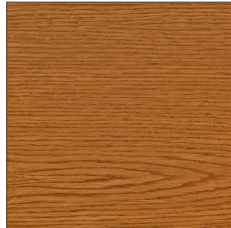


Veneer Case

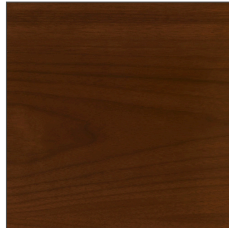
Veneer Finishes



Light Oak Veneer



Medium Oak Veneer



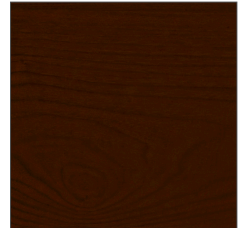
Natural Walnut Veneer



Heritage Walnut Veneer



Cherry Veneer



Mahogany Veneer



**A BRAND OF MILESTONE AV TECHNOLOGIES** | [www.milestone.com](http://www.milestone.com)

**P** 800.622.3737 / 574.267.8101 **F** 877.325.4832 / 574.267.7804

**E** [info@da-lite.com](mailto:info@da-lite.com)

In British Columbia, Milestone AV Technologies ULC carries on business as MAVT Milestone AV Technologies ULC.

©2017 Milestone AV Technologies. DL-0443 (Rev. 2) 0717.

Da-Lite is a registered trademark of Milestone AV Technologies. All other brand names or marks are used for identification purposes and are trademarks of their respective owners. All patents are protected under existing designations. Other patents pending.